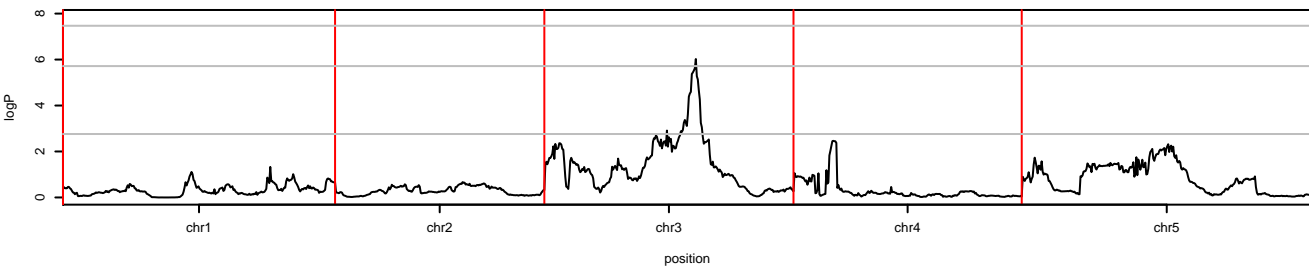
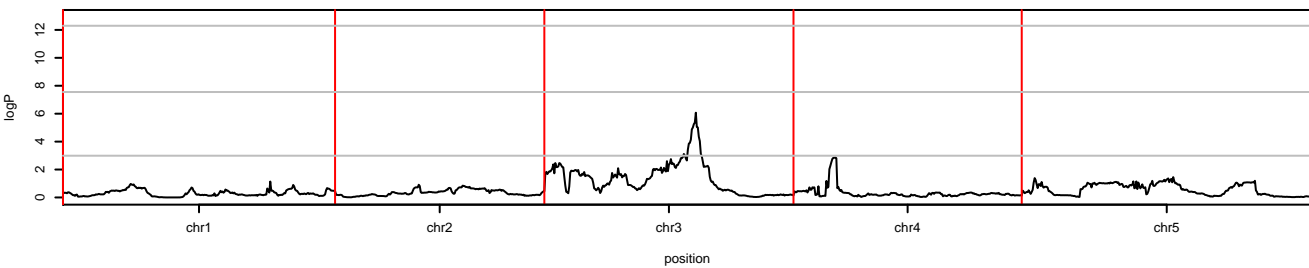


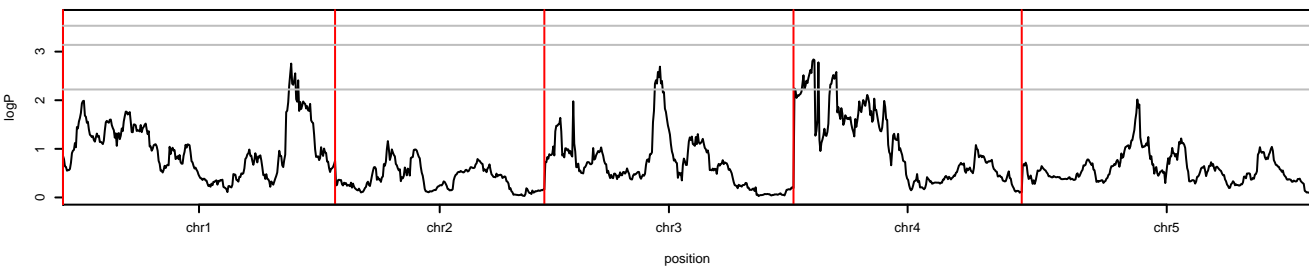
average.days.to.germ



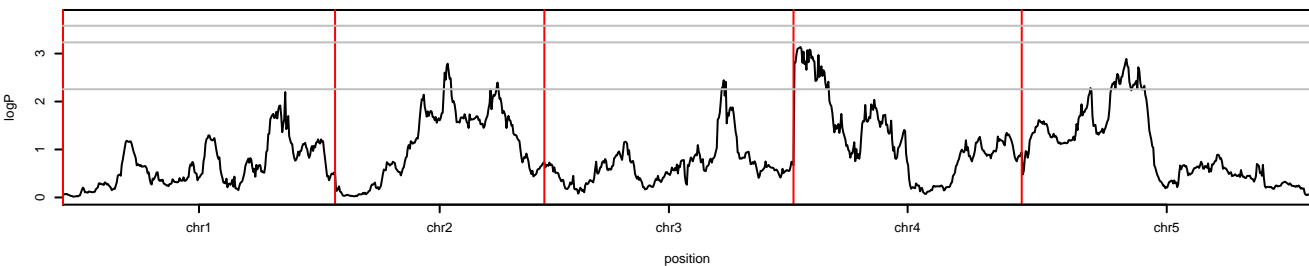
days.to.germ



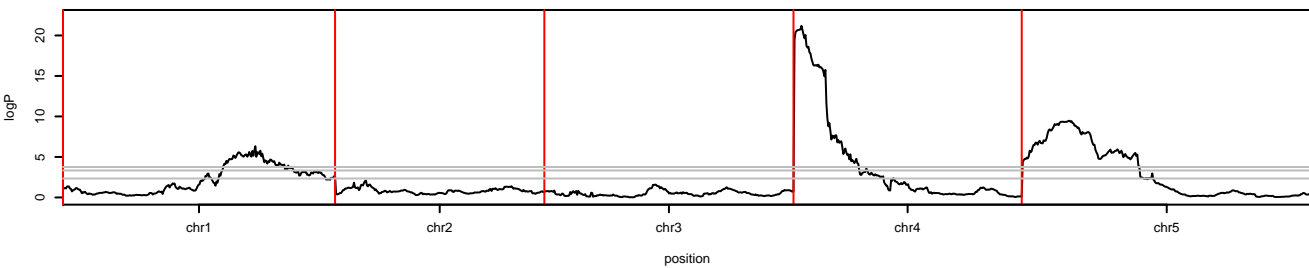
leaves.day.21



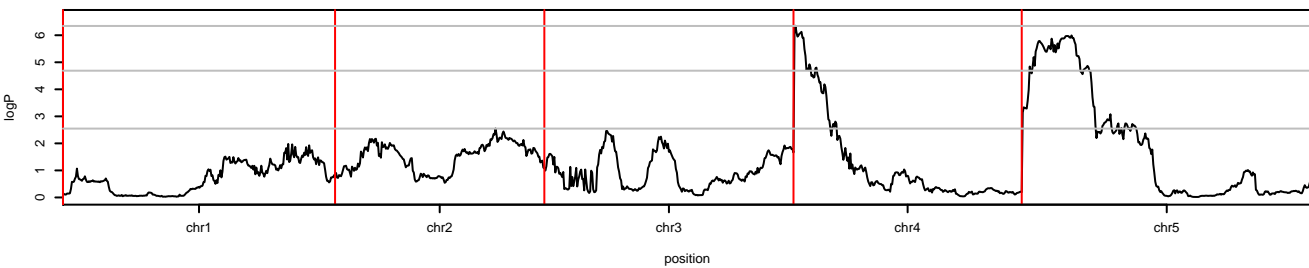
leaves.day.28



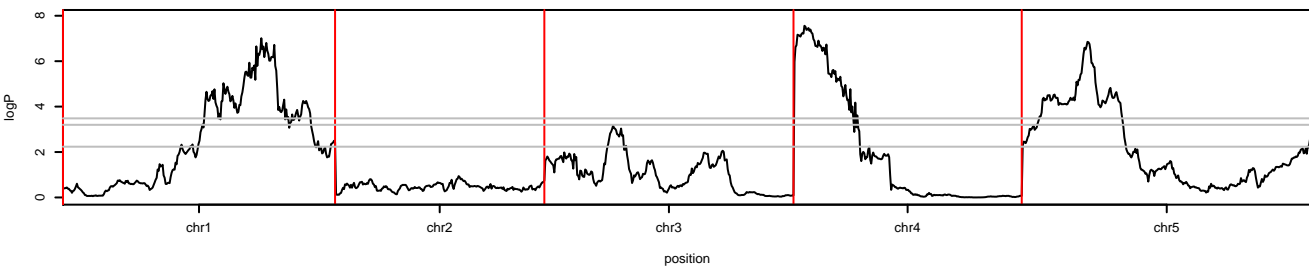
**days.to.bolt**



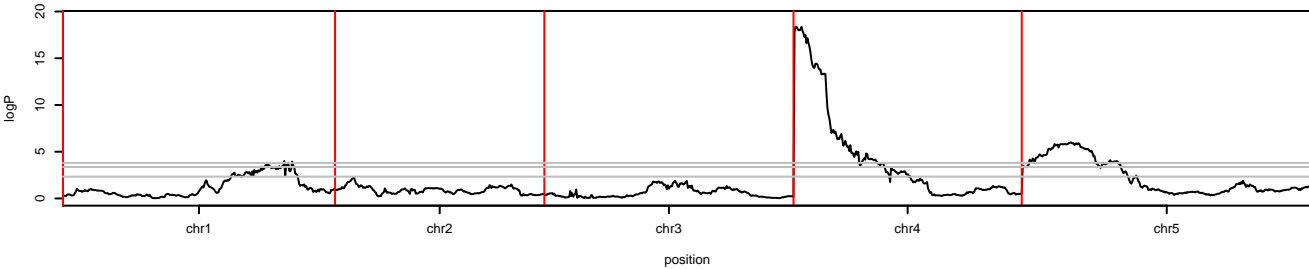
**bolt.to.flower**



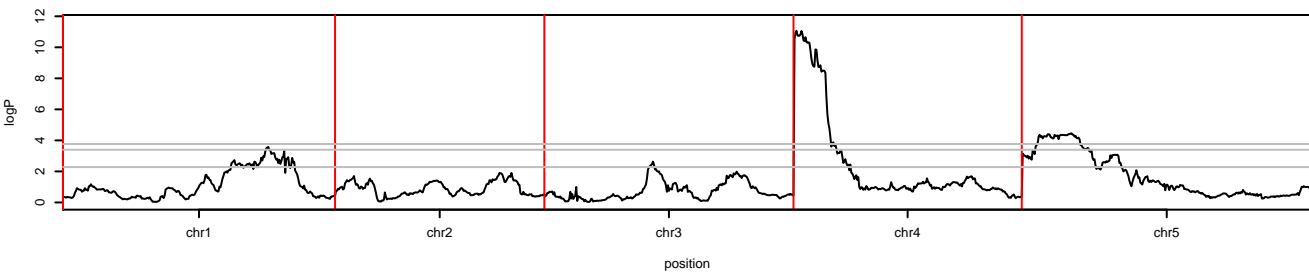
**basal**



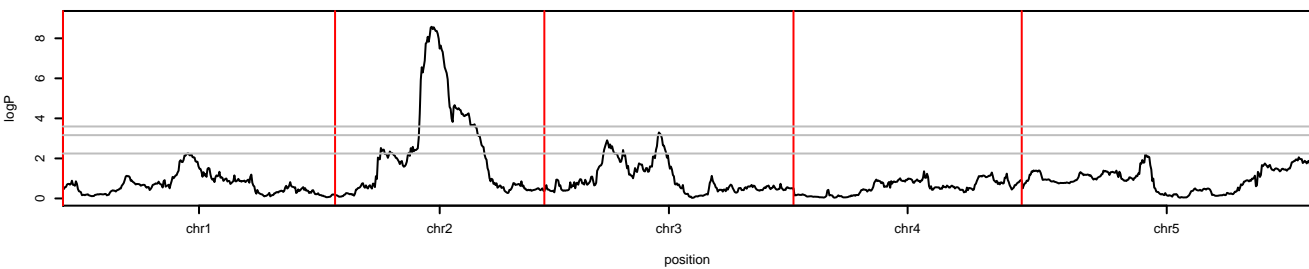
**nodes**



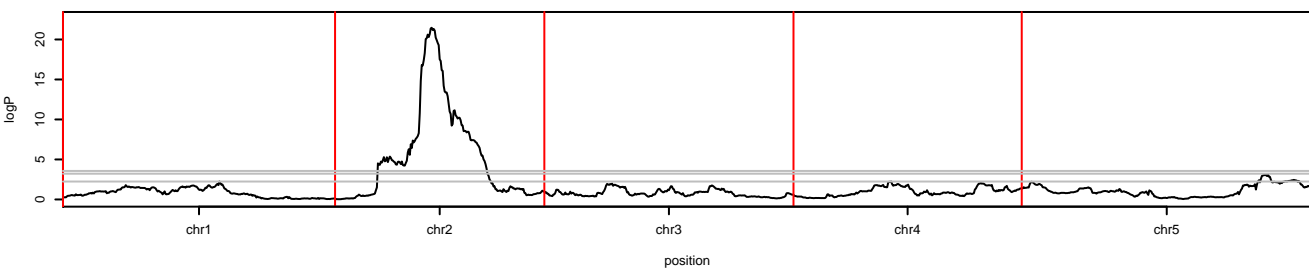
aerial



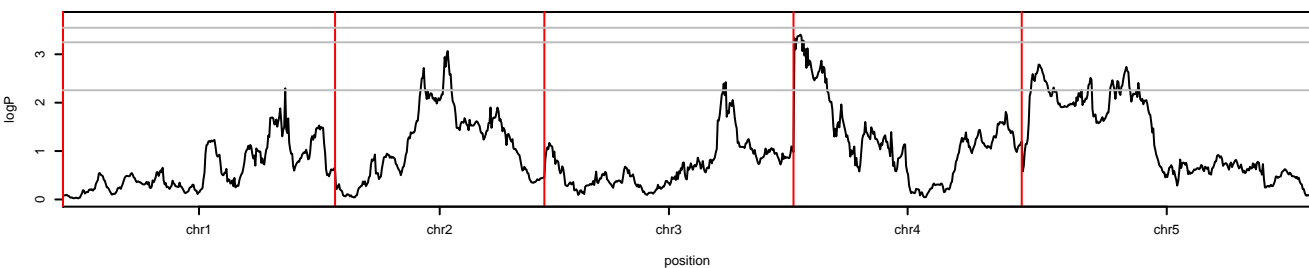
top.cm



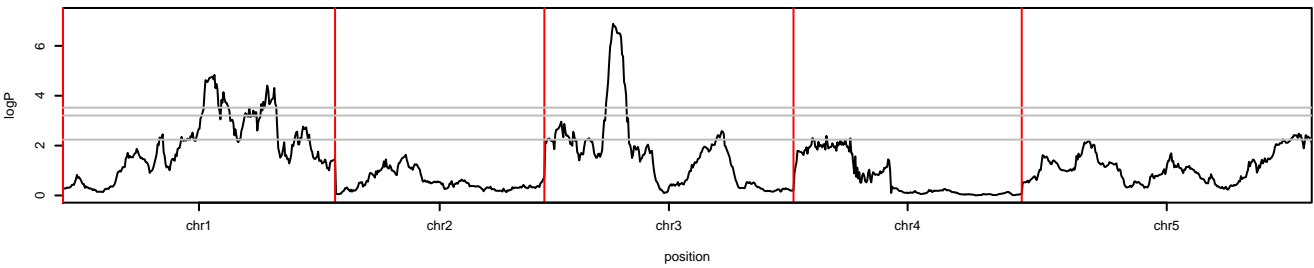
total.cm



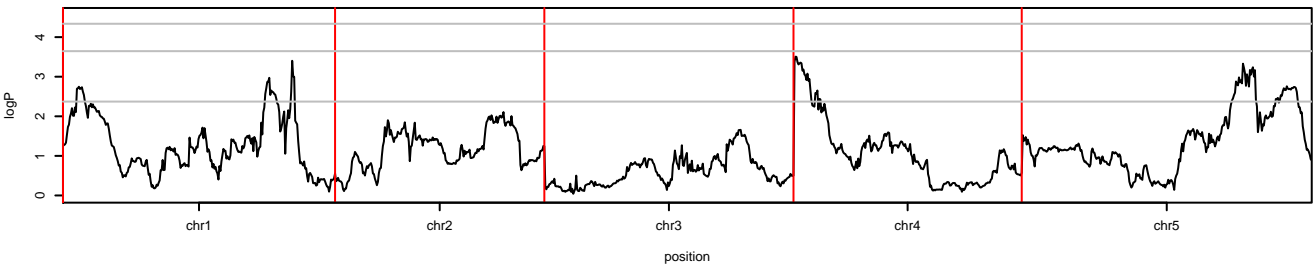
leaves.day.28.given.days.to.germ



**basal.given.days.to.bolt**



**nodes.given.days.to.bolt**



**aerial.given.nodes**

