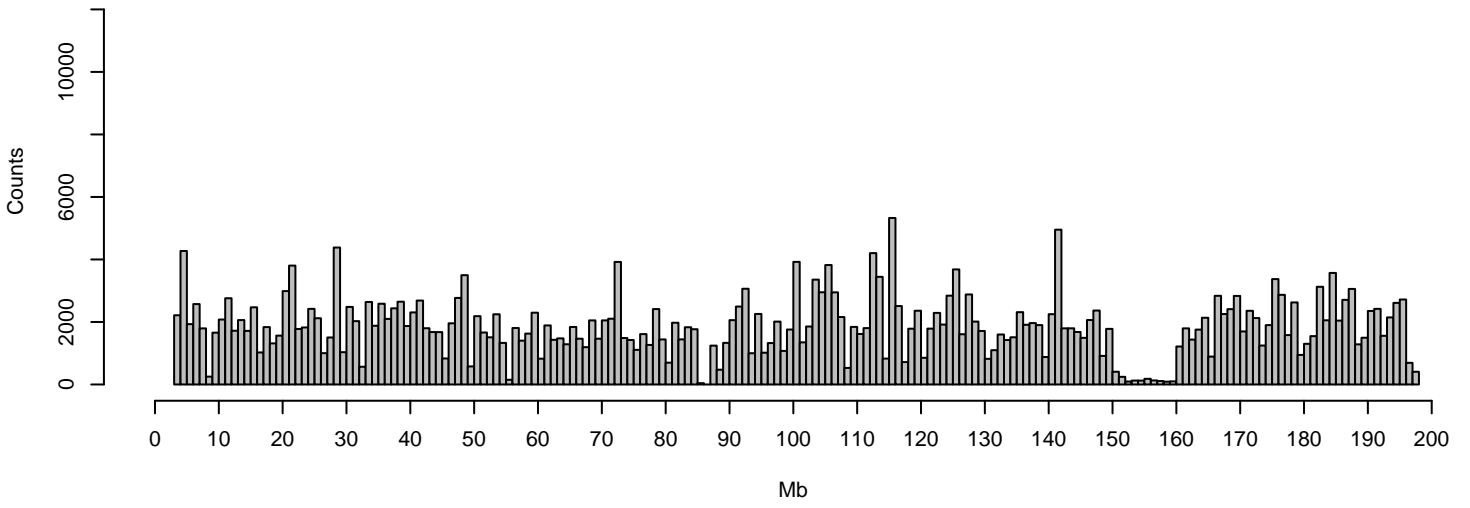
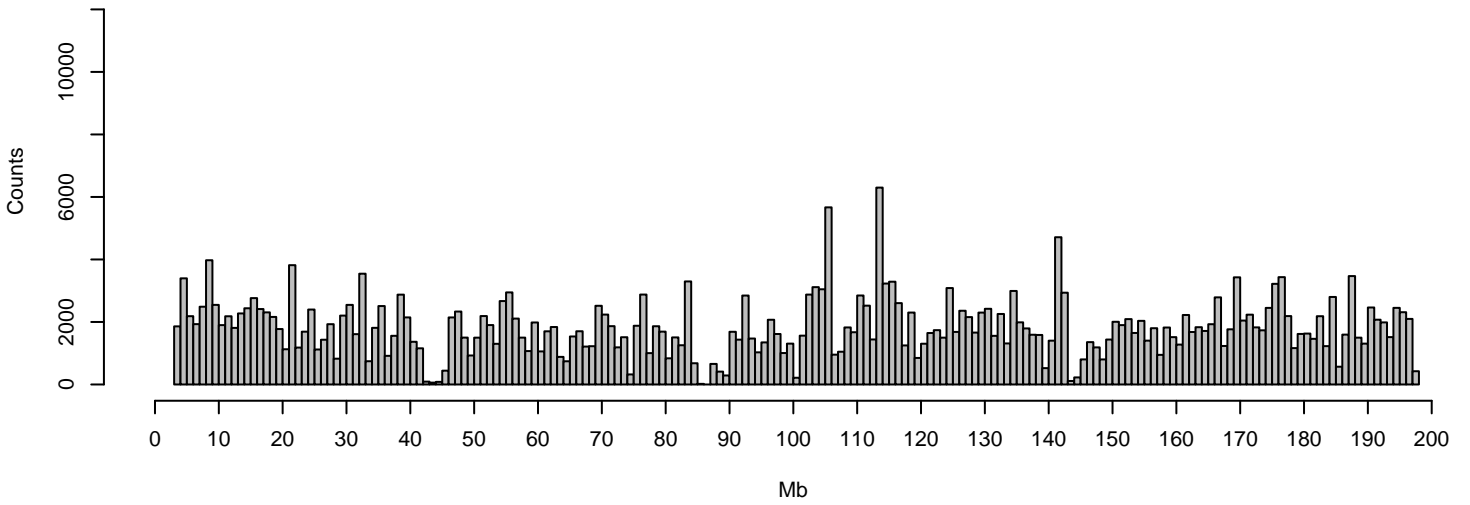


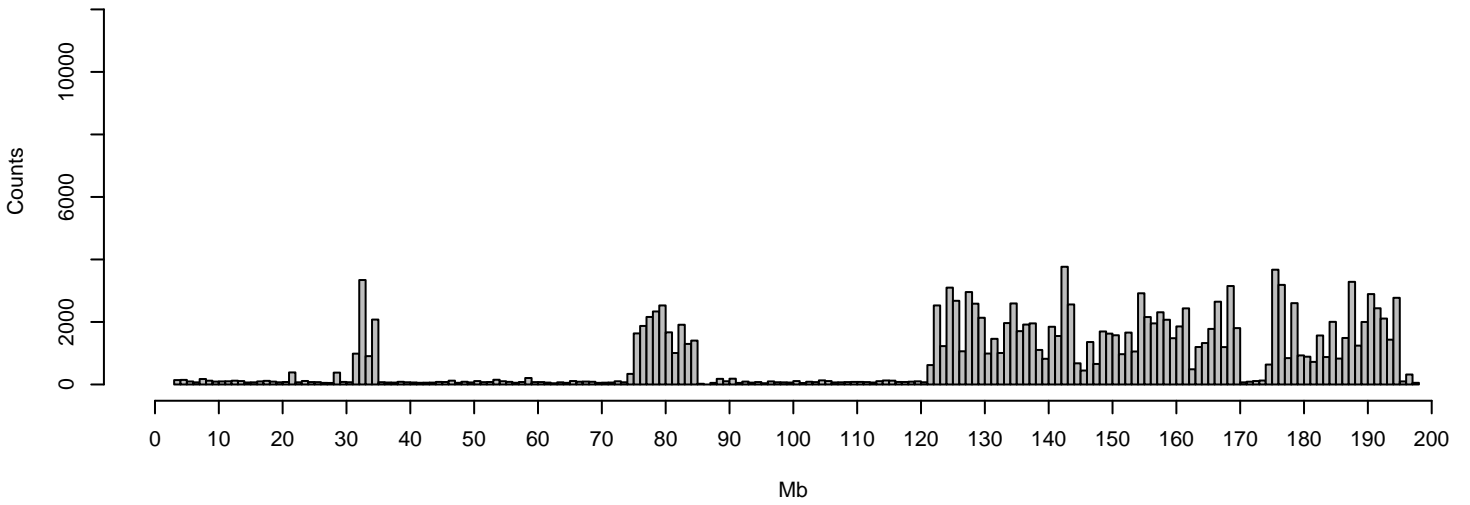
**Counts of HETs on Chr 1
Mouse 101 (M)**



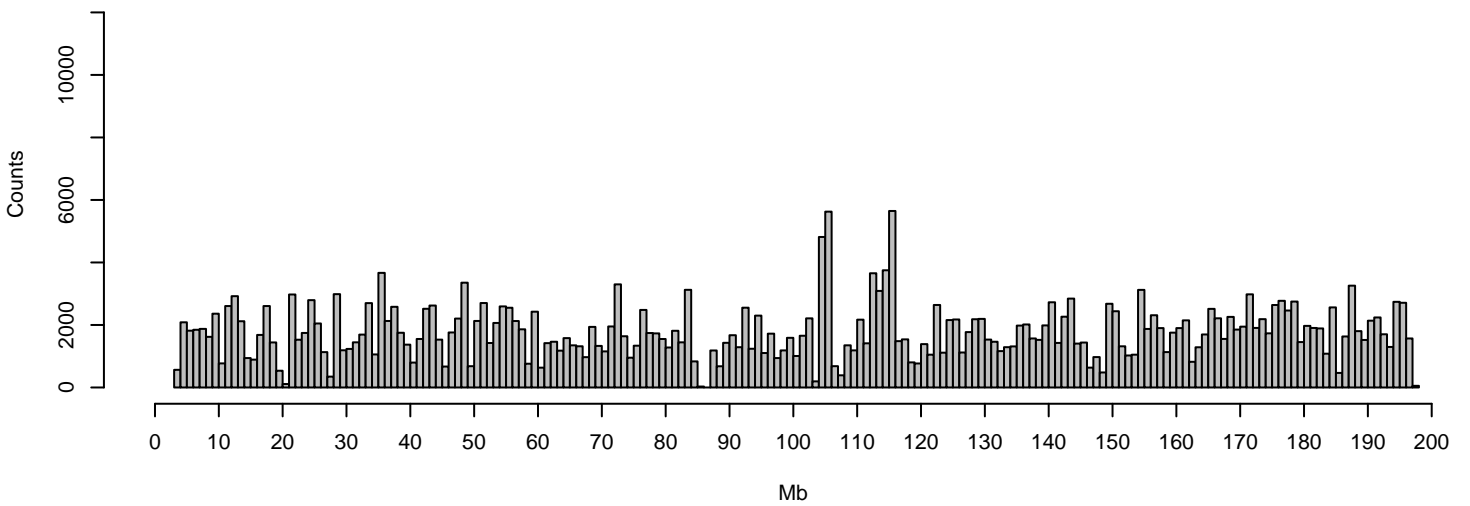
Mouse 211 (F)



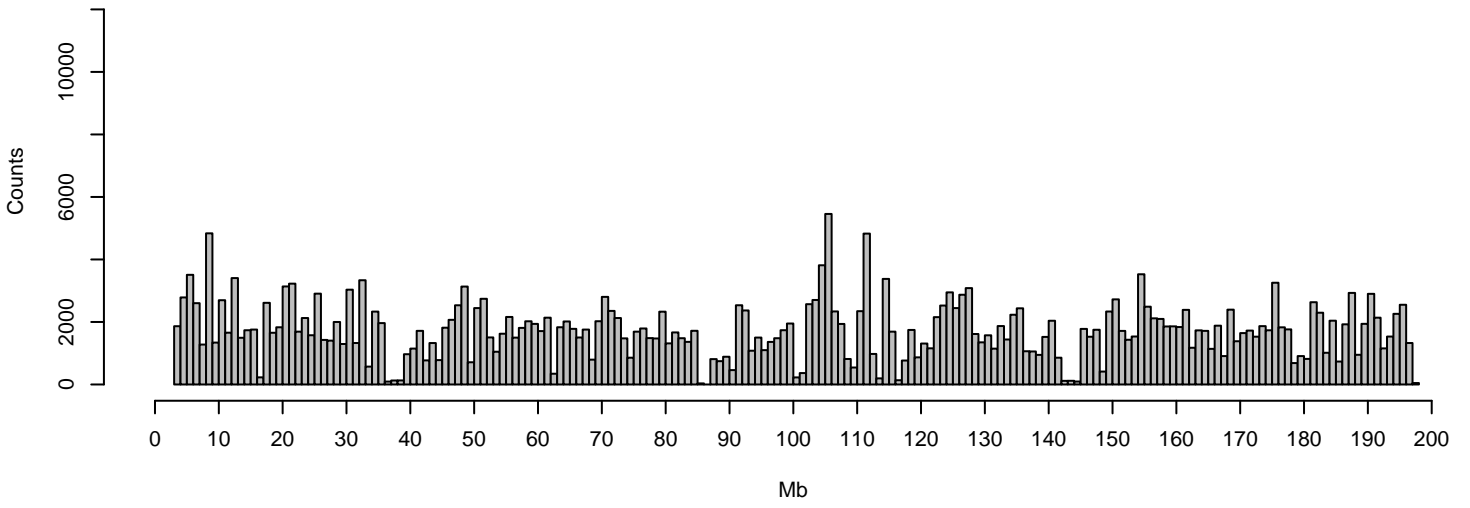
Mouse 218 (F)



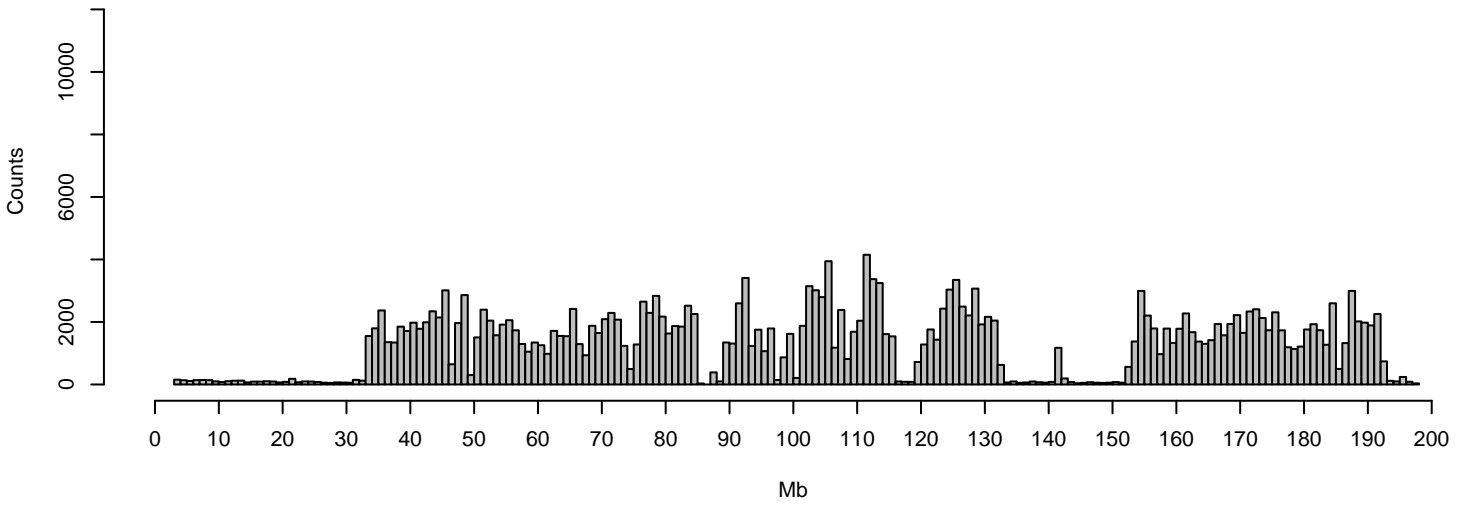
Mouse 227 (F)



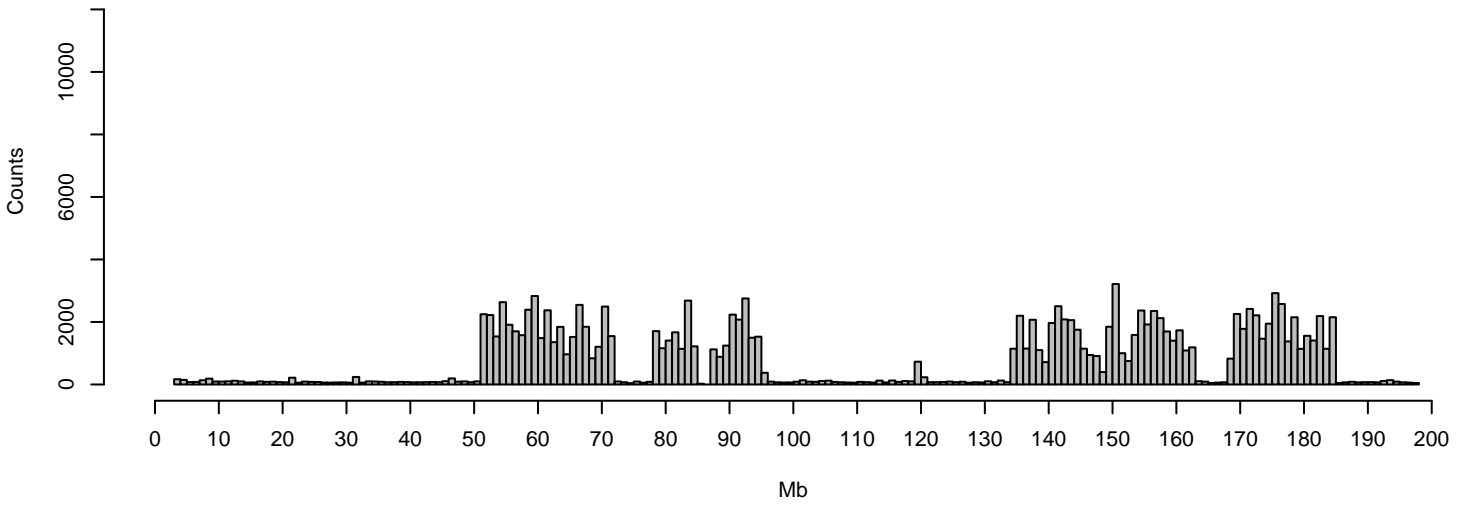
Mouse 231 (F)



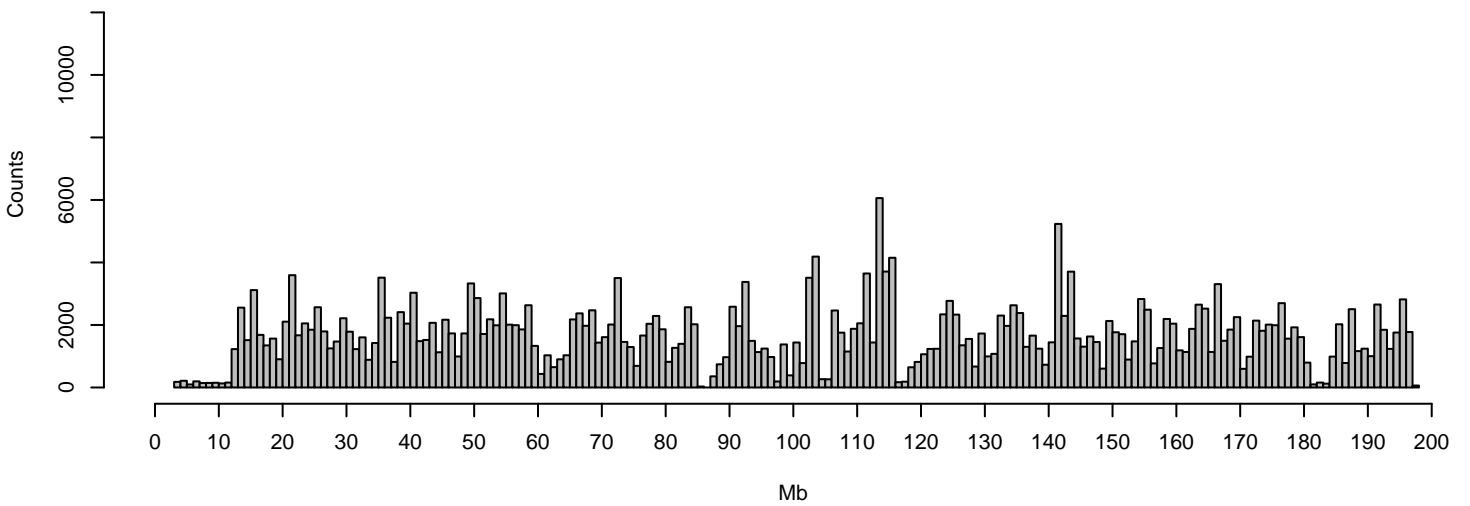
Mouse 234 (M)



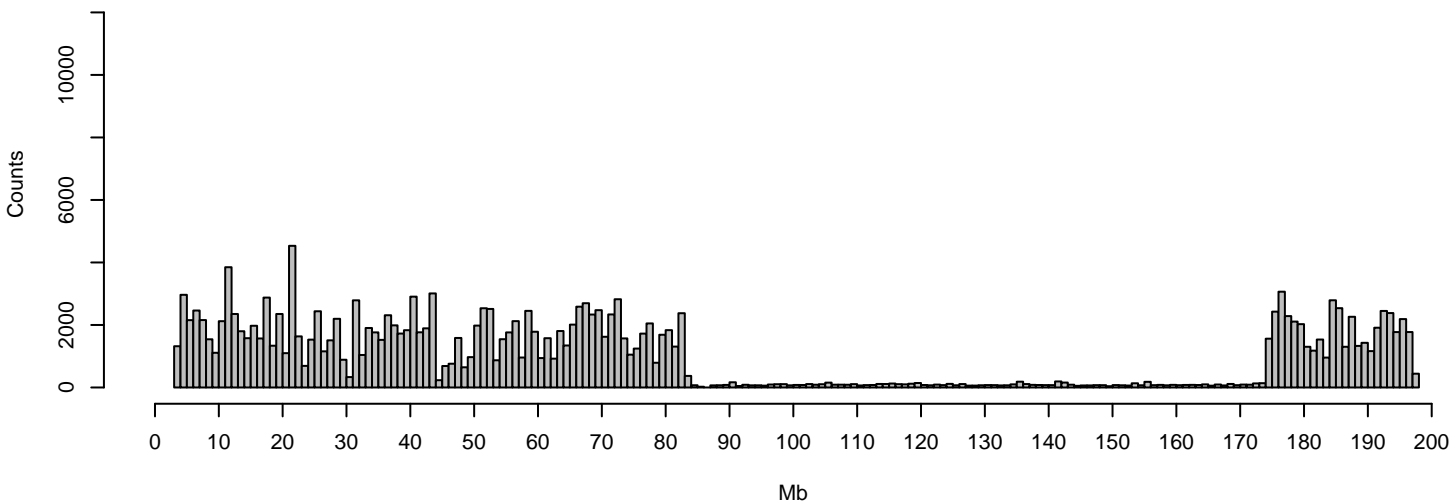
Mouse 236 (F)



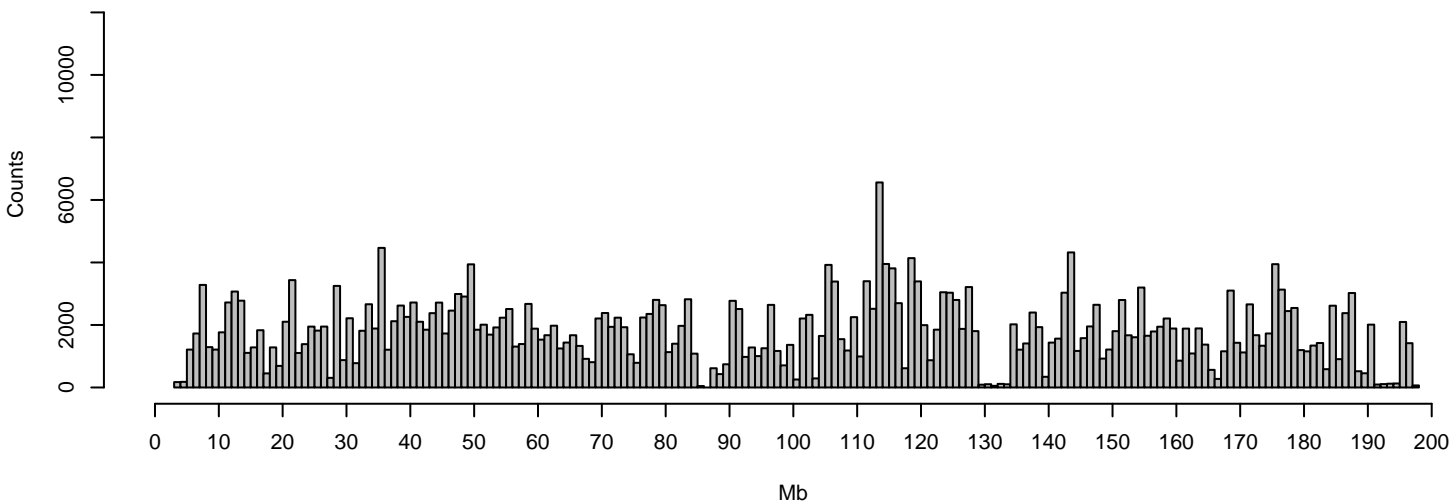
Mouse 246 (M)



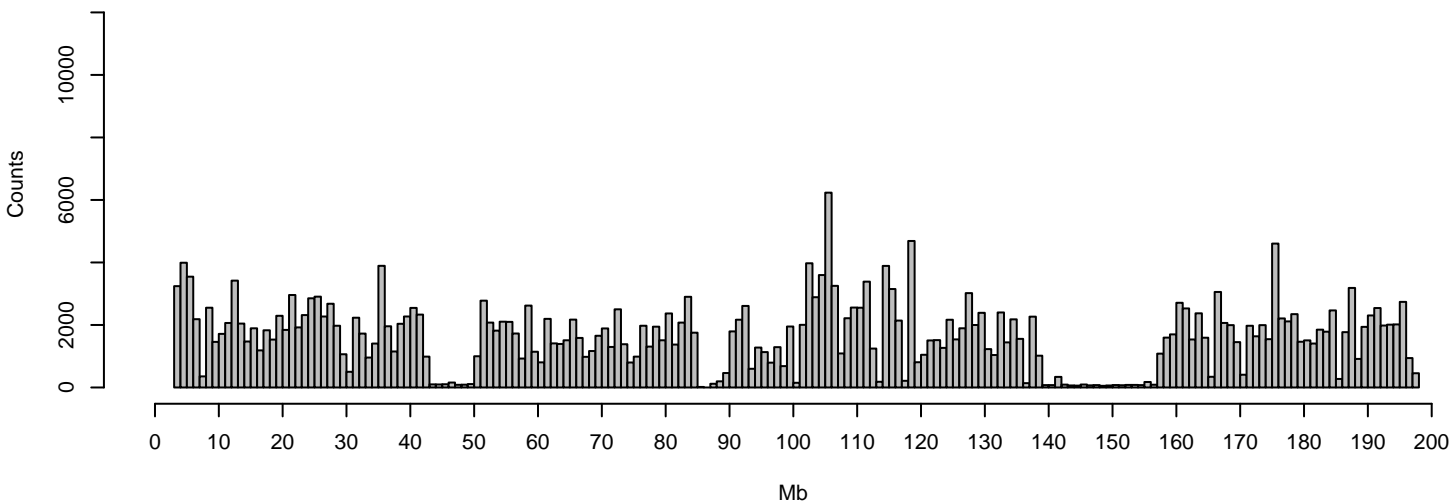
Mouse 303 (M)



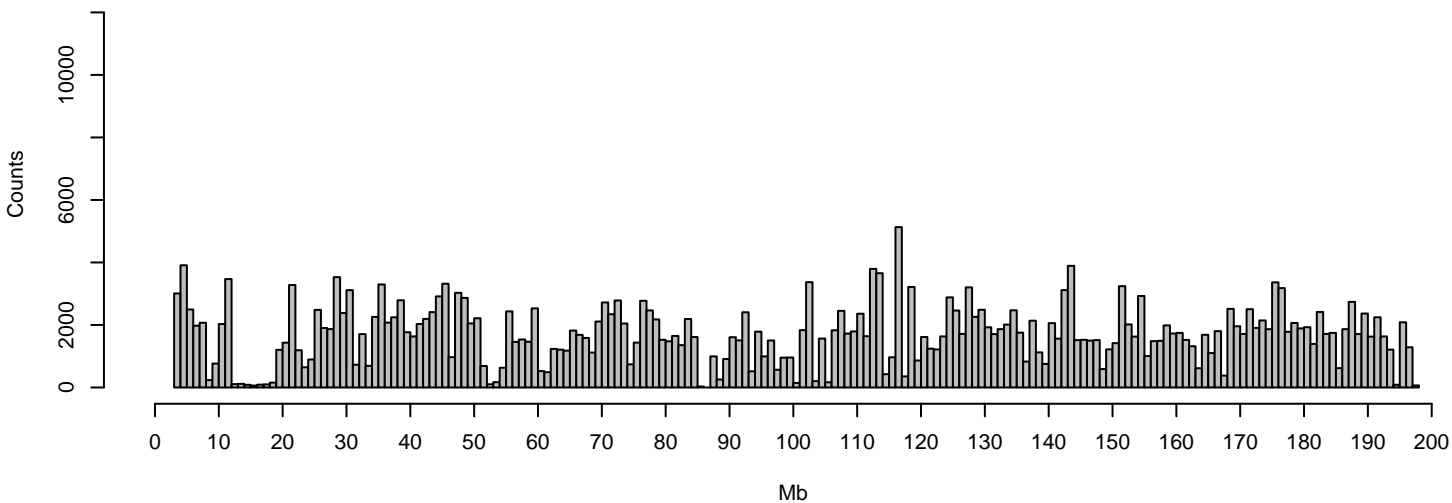
Mouse 310 (M)



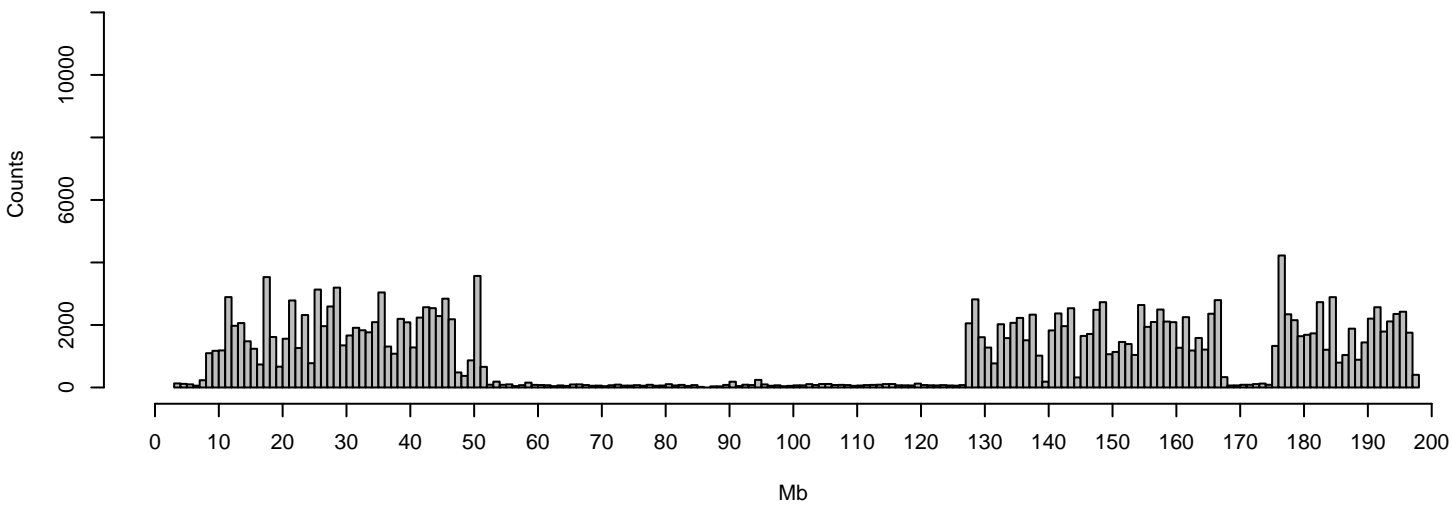
Mouse 311 (M)



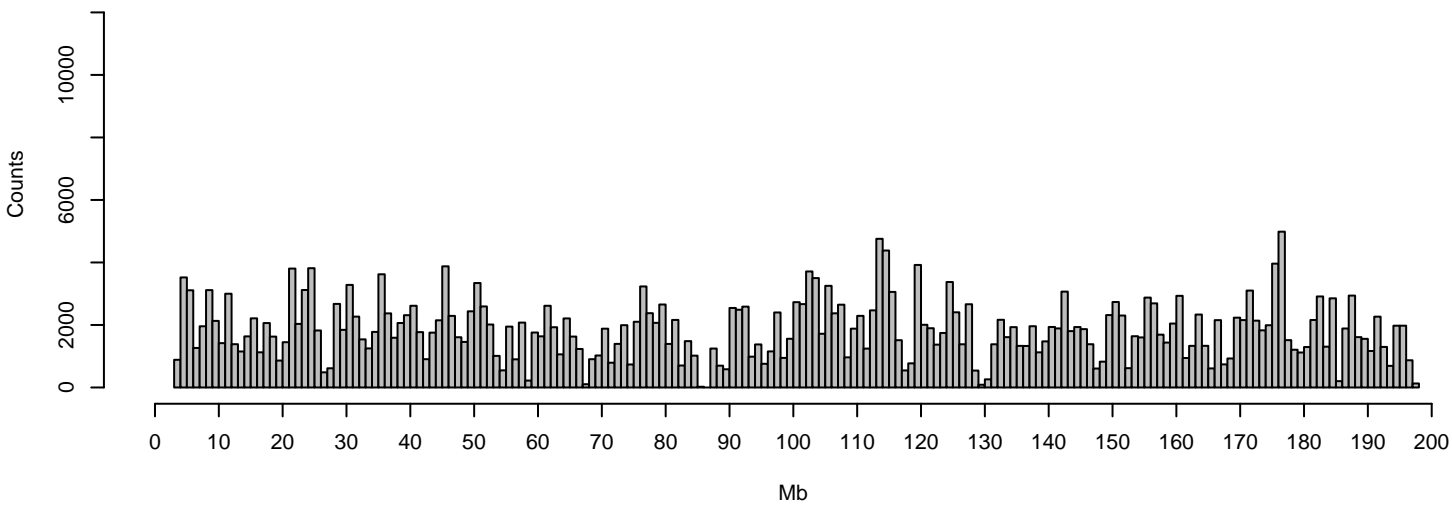
Mouse 313 (M)



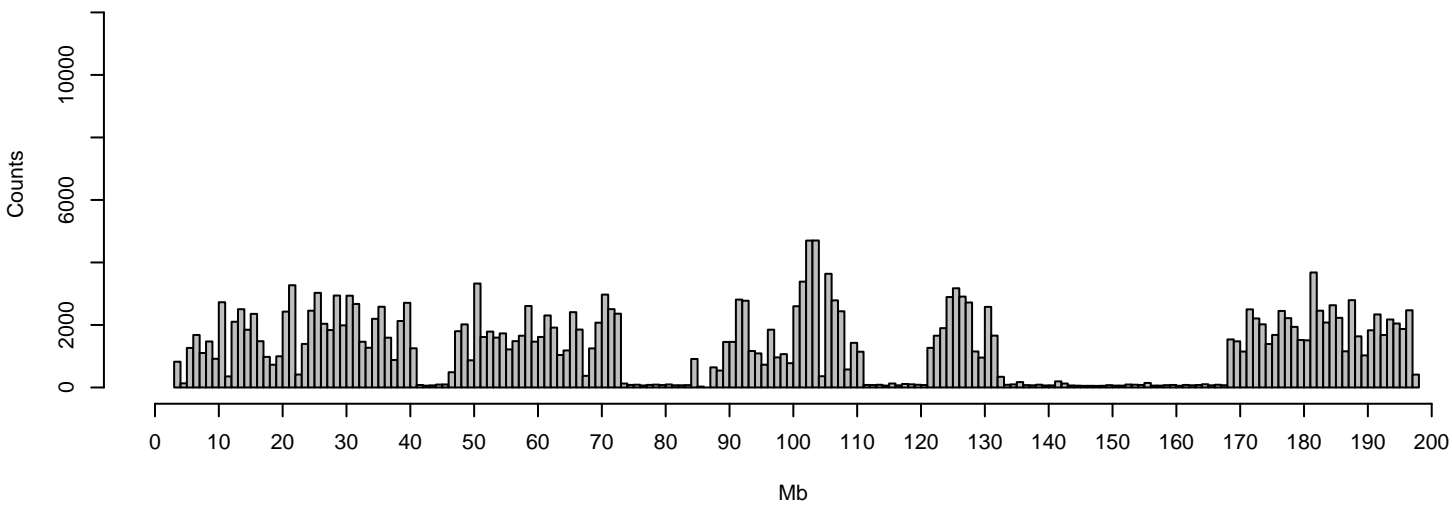
Mouse 314 (F)



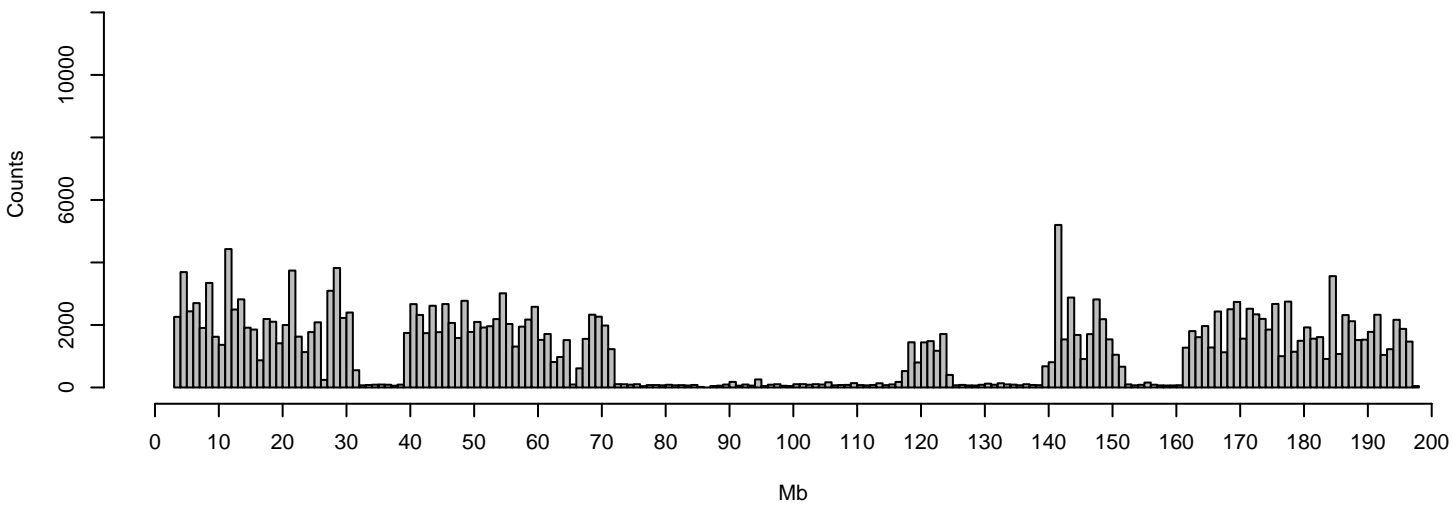
Mouse 327 (F)



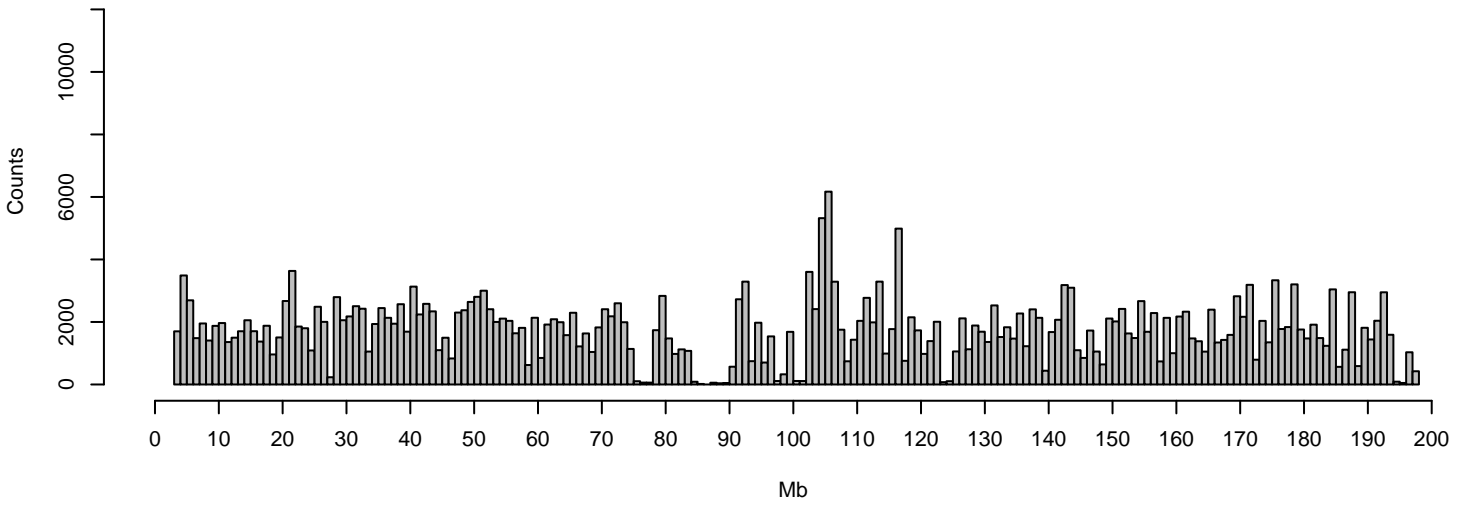
Mouse 329 (F)



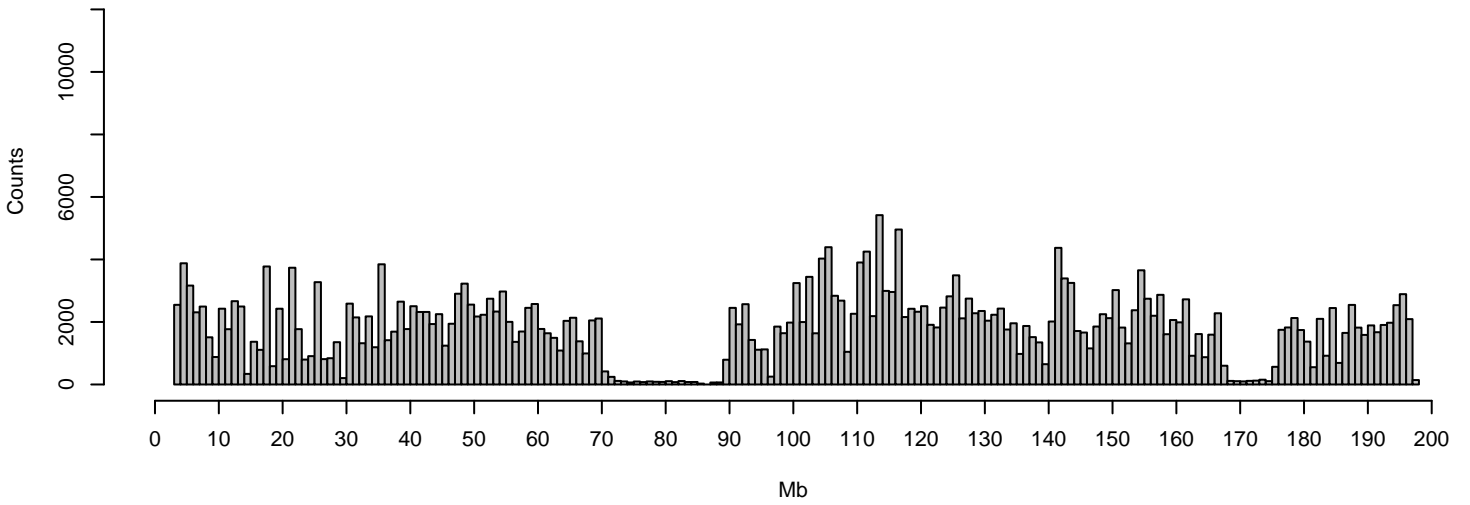
Mouse 330 (F)



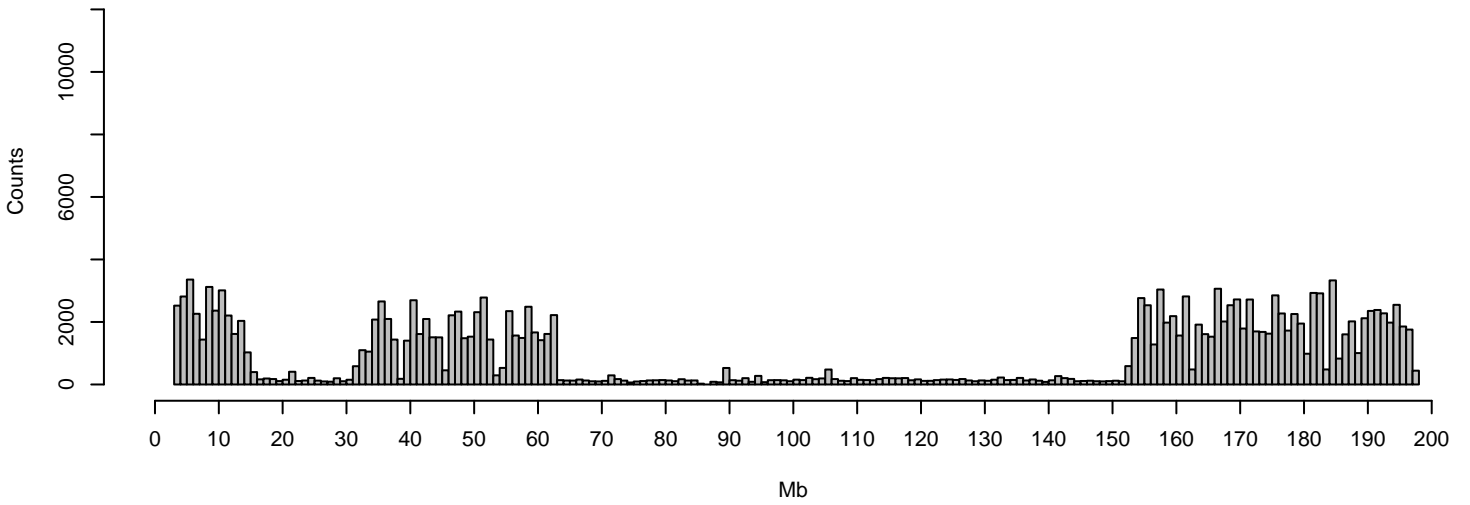
Mouse 334 (F)



Mouse 34 (M)



Mouse 44 (M)



Mouse 54 (M)

