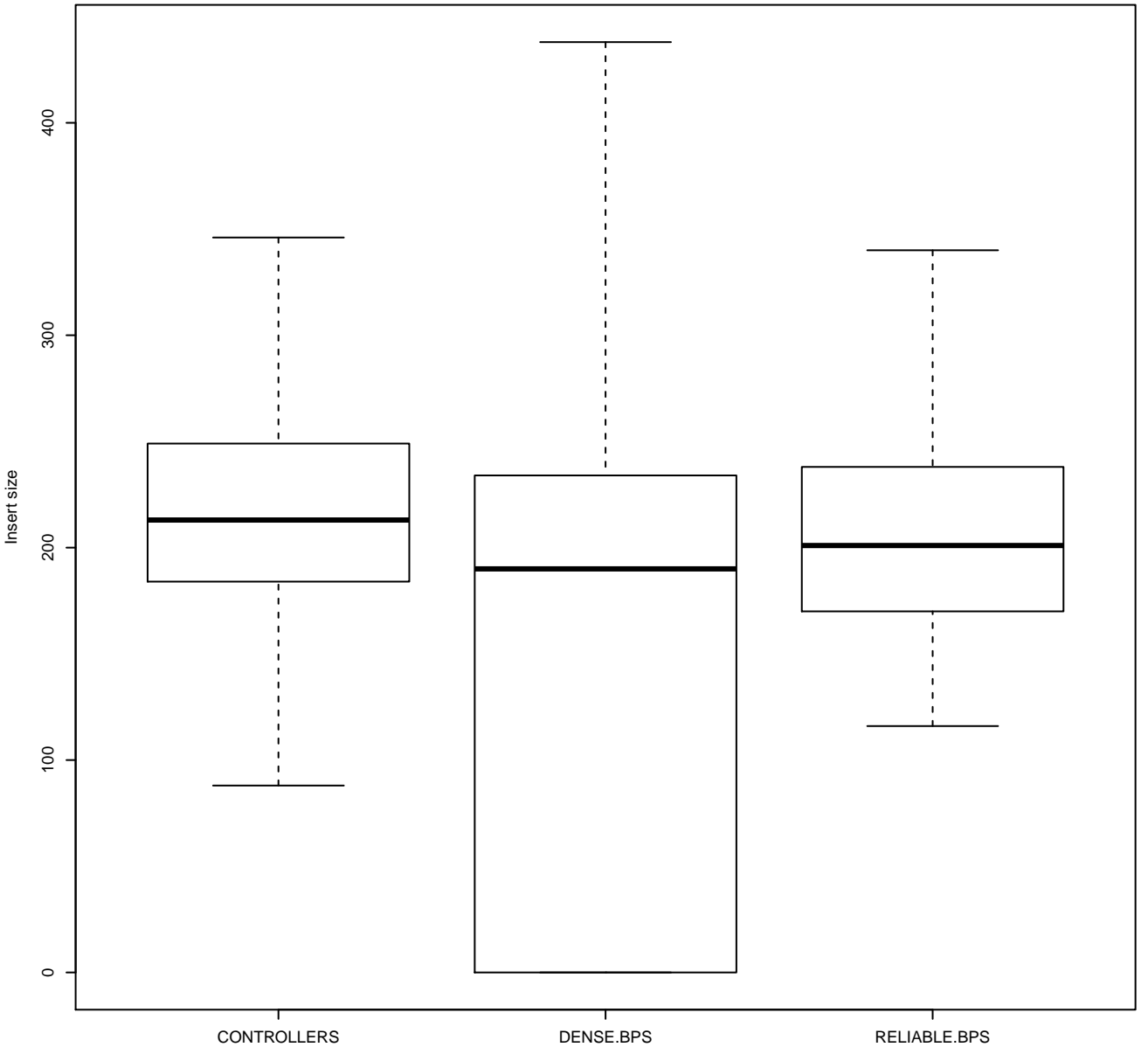
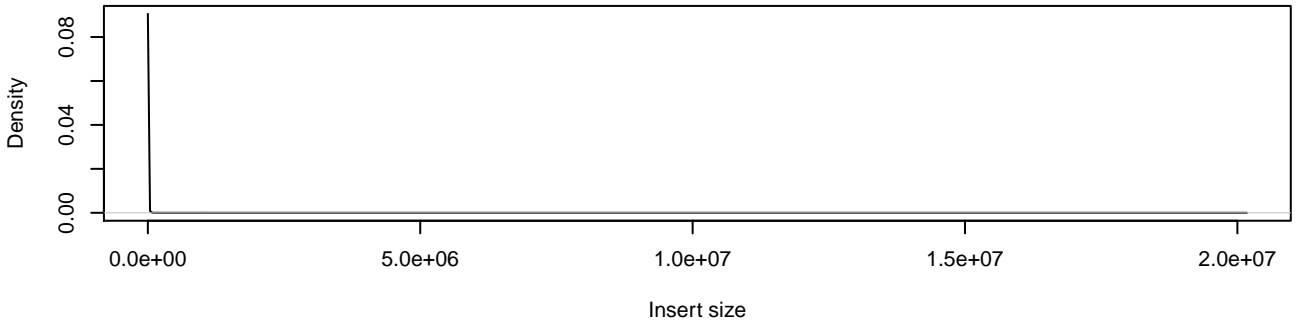


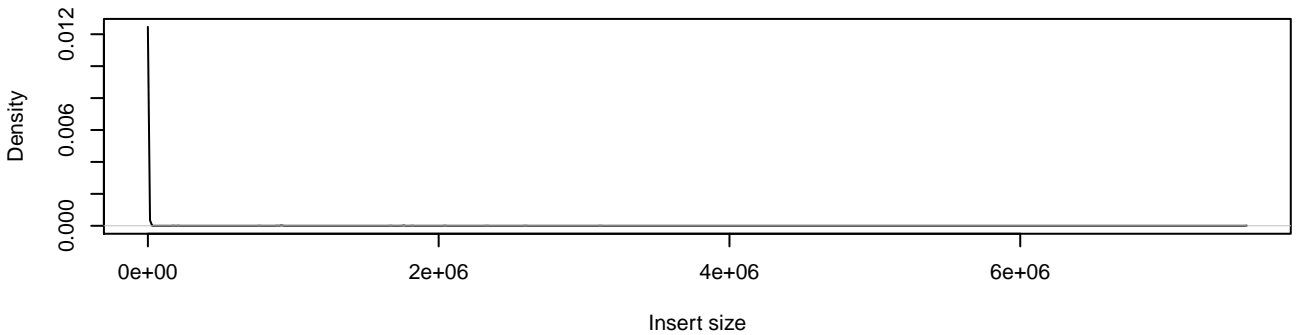
MAGIC.149



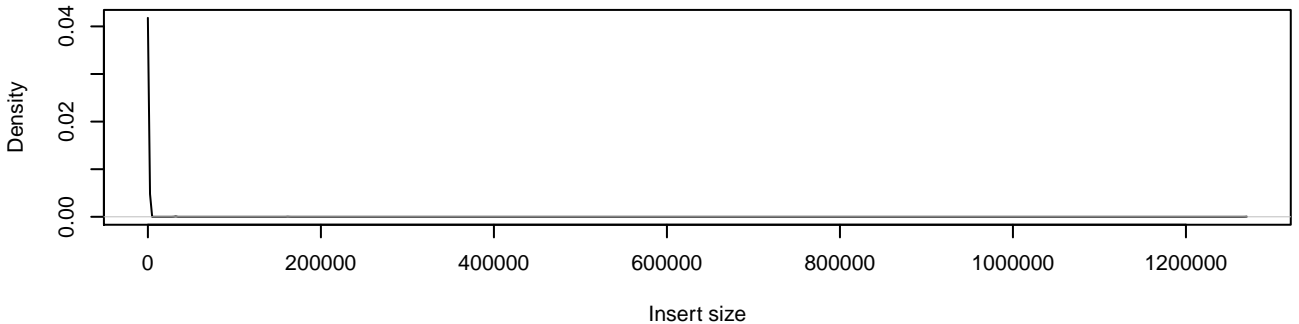
Insert size inside haplotype blocks (controllers)



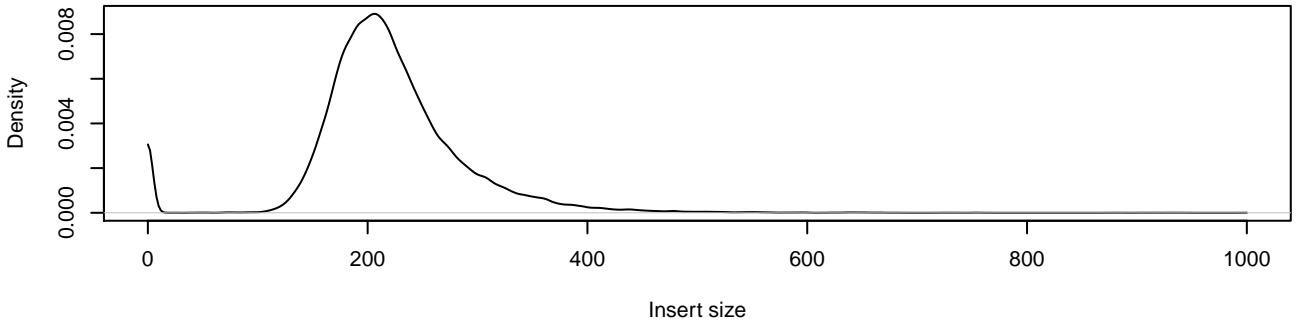
Insert size of dense breakpoints (distance < 500kb)



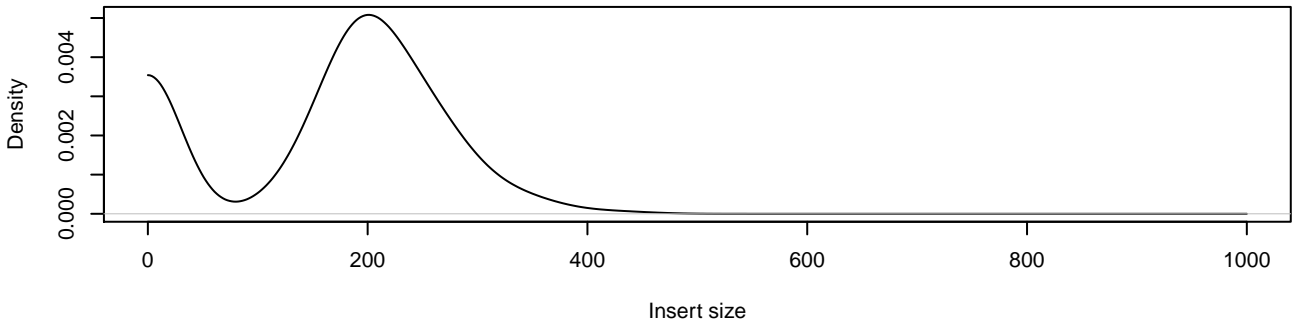
Insert size of reliable breakpoints (distance > 500kb)



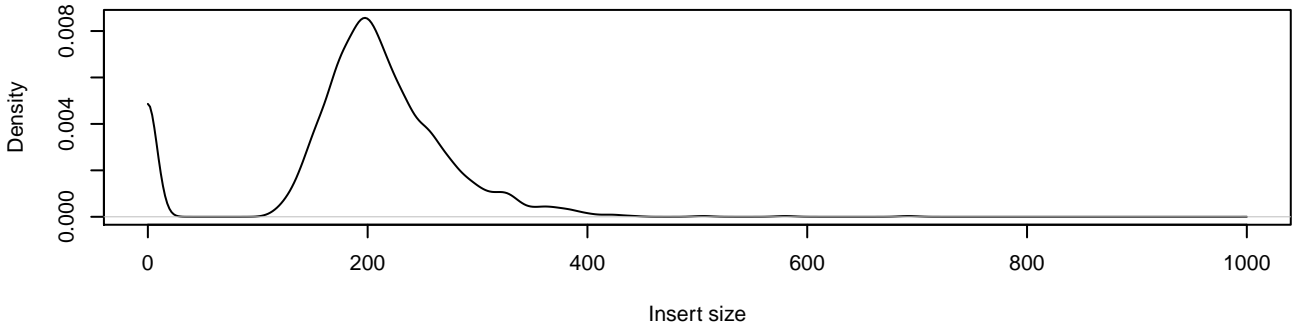
Insert size inside haplotype blocks (controllers)from = 0 to = 1000



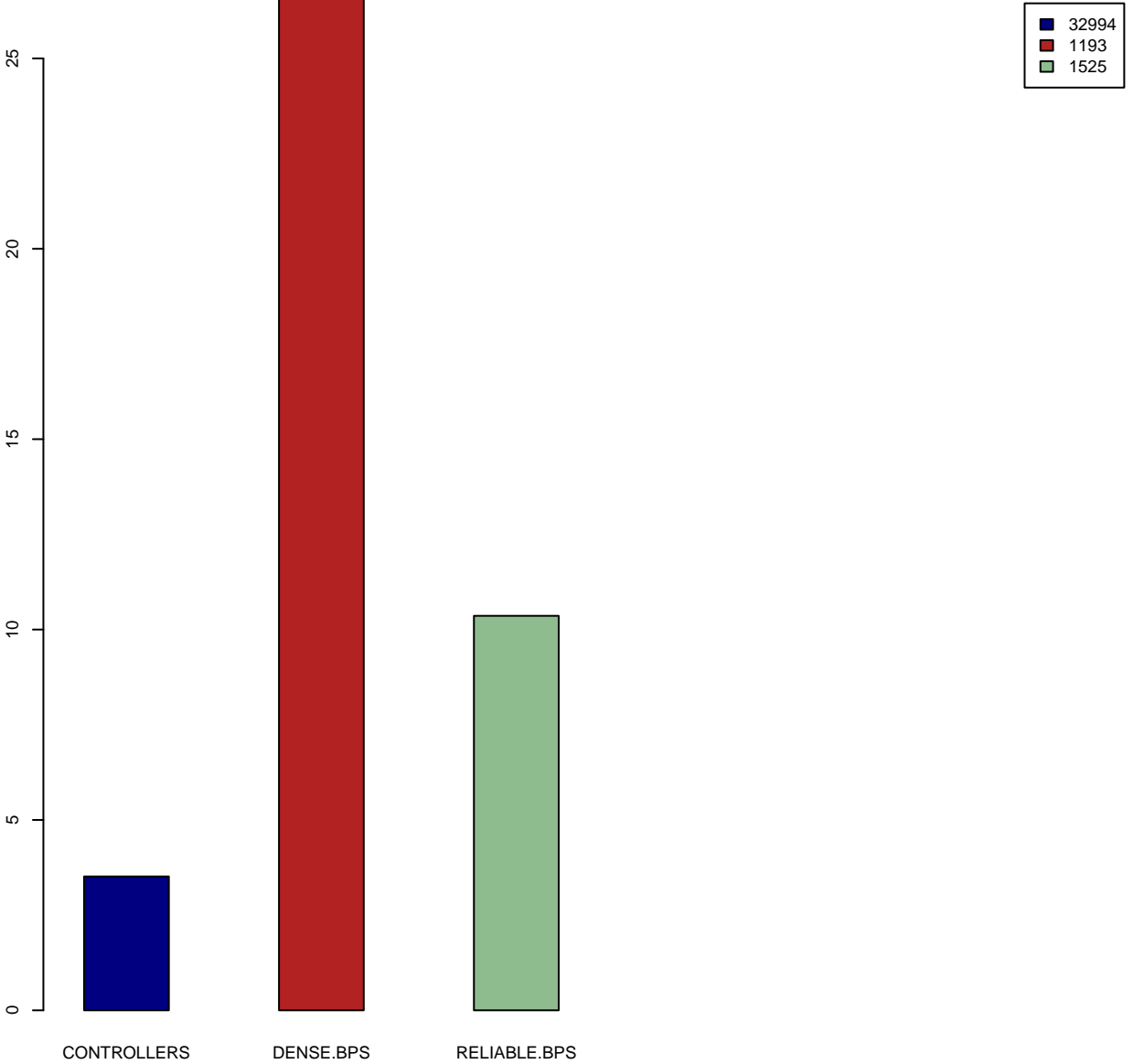
Insert size of dense breakpoints (distance < 500kb)from = 0 to = 1000



Insert size of reliable breakpoints (distance > 500kb)from = 0 to = 1000



Unpaired reads per cluster



Reads with insert size > 1000

