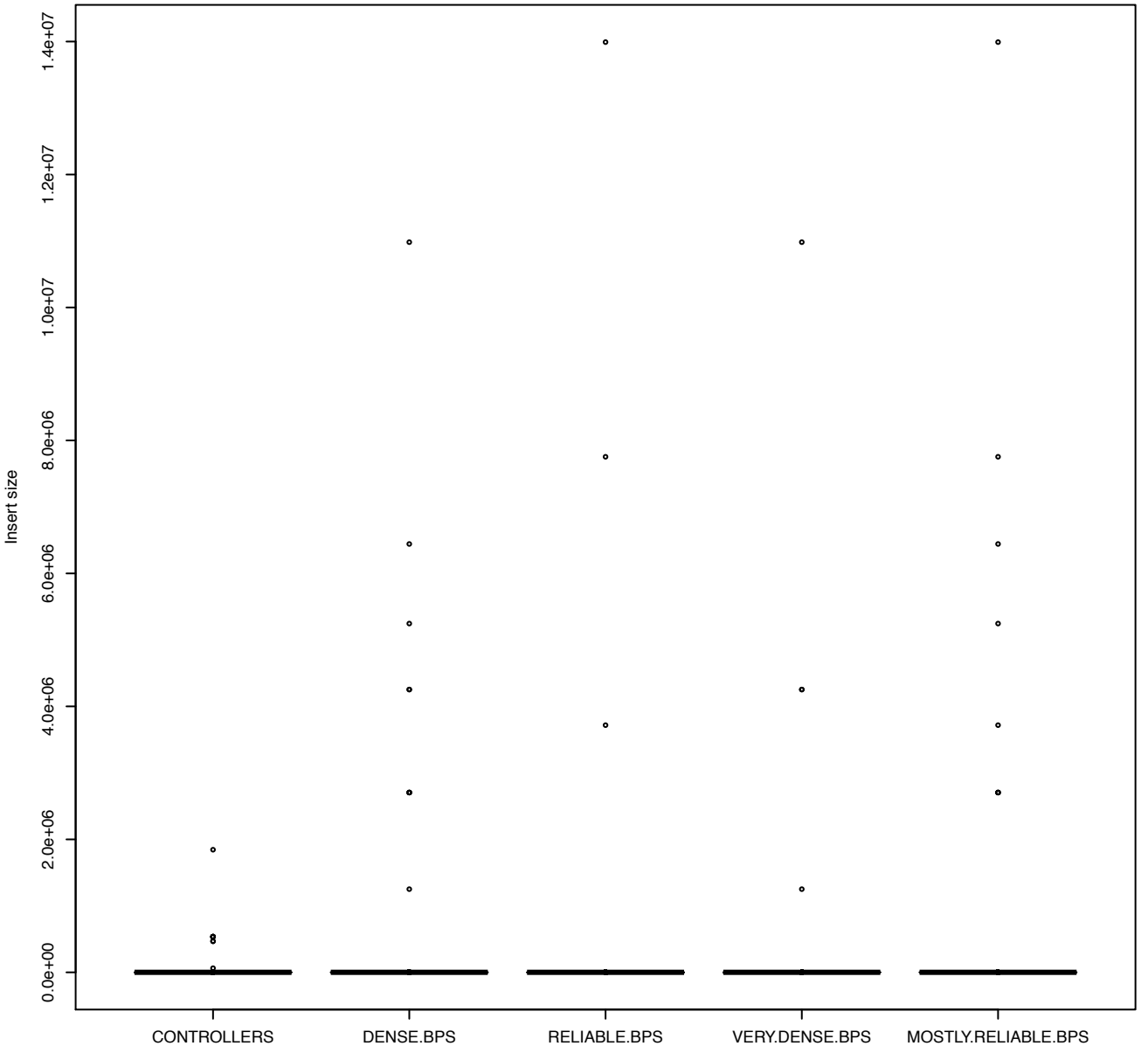
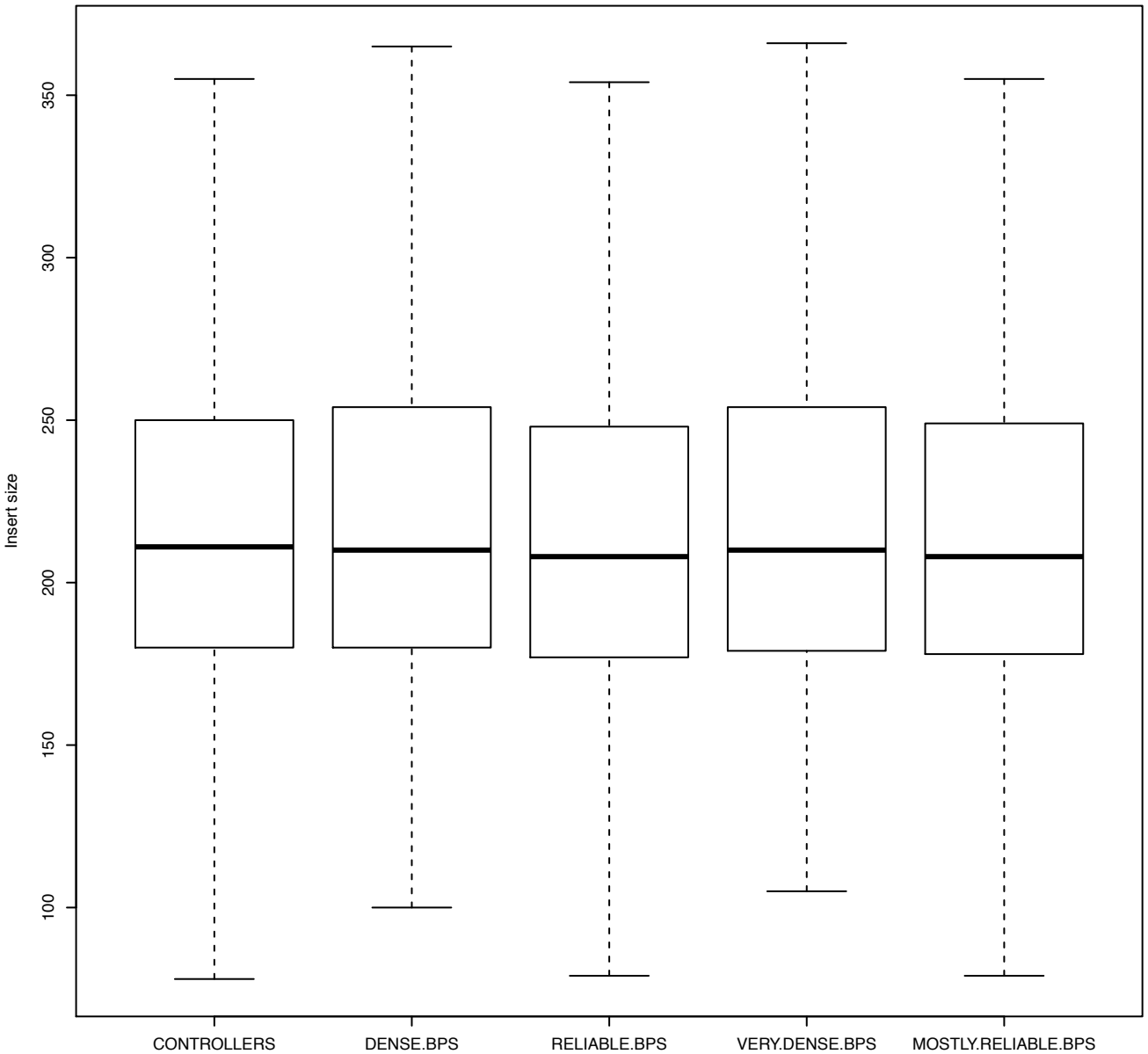


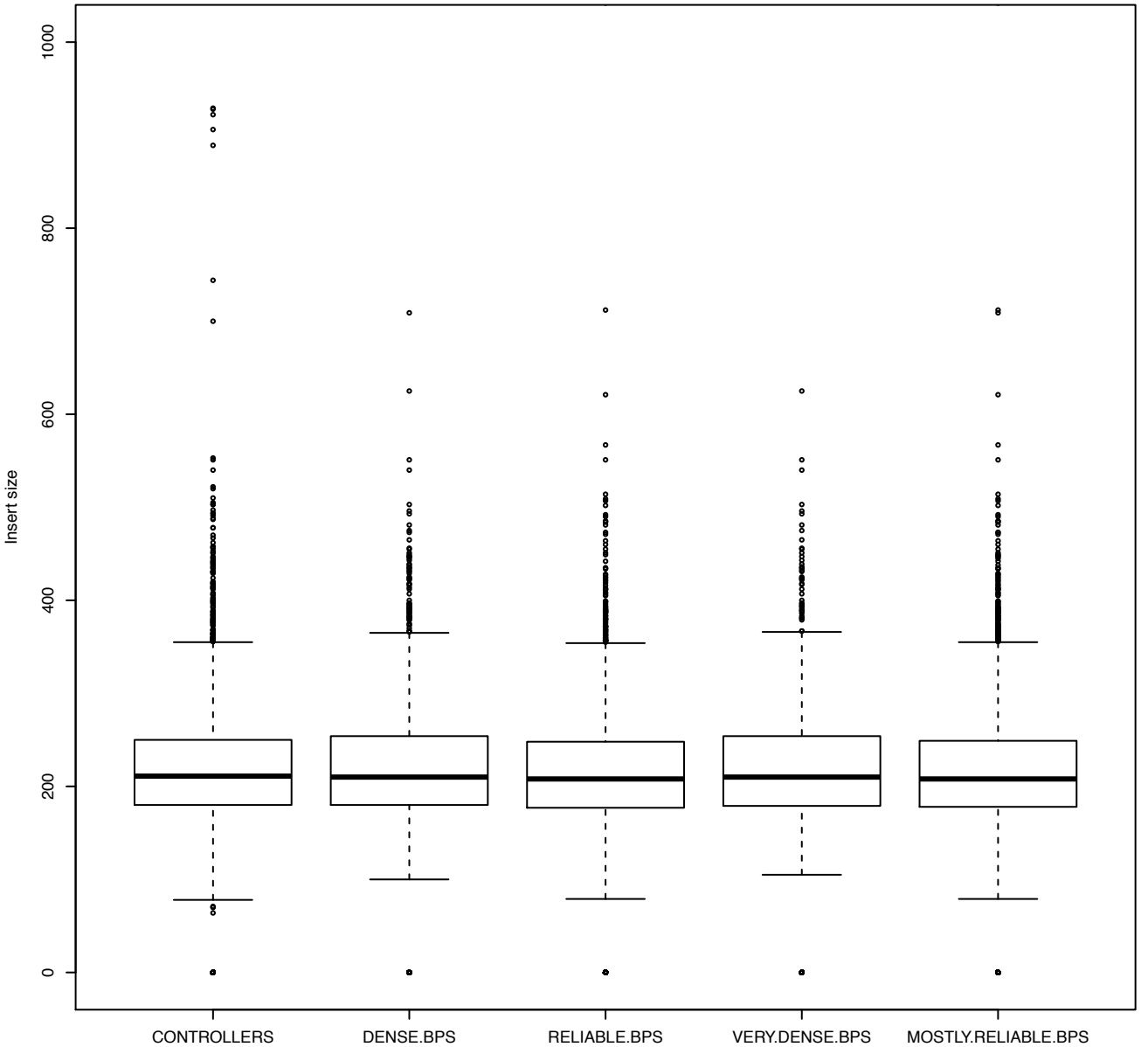
MAGIC.105



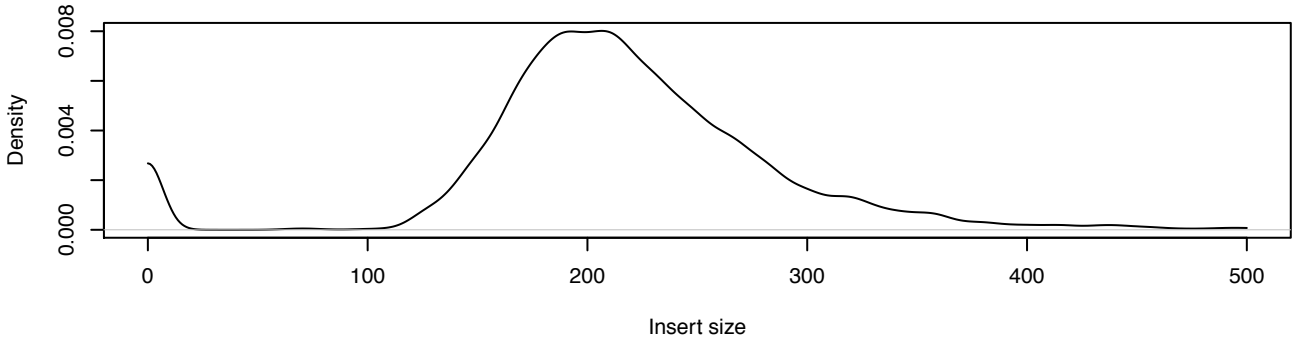
MAGIC.105



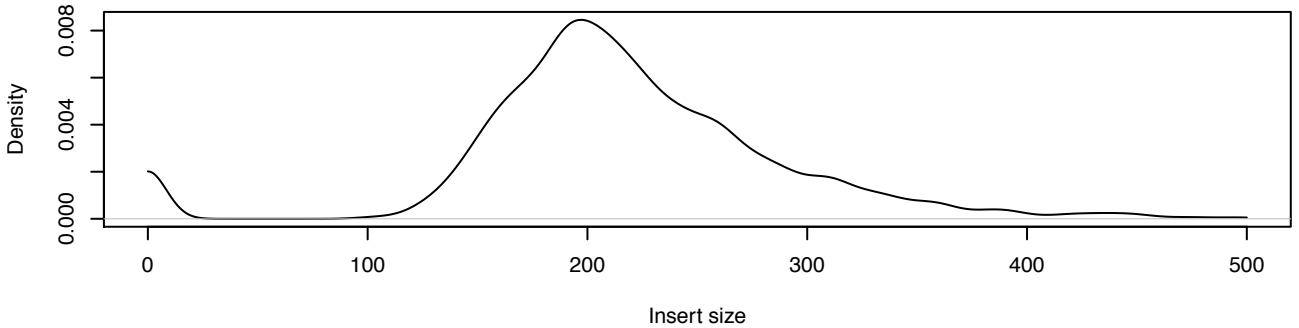
MAGIC.105



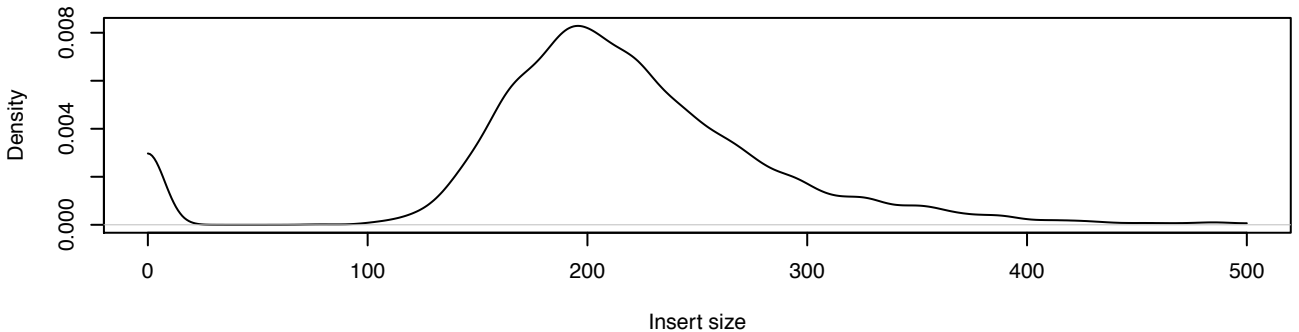
Insert size inside haplotype blocks (controllers)from = 0 to = 1000



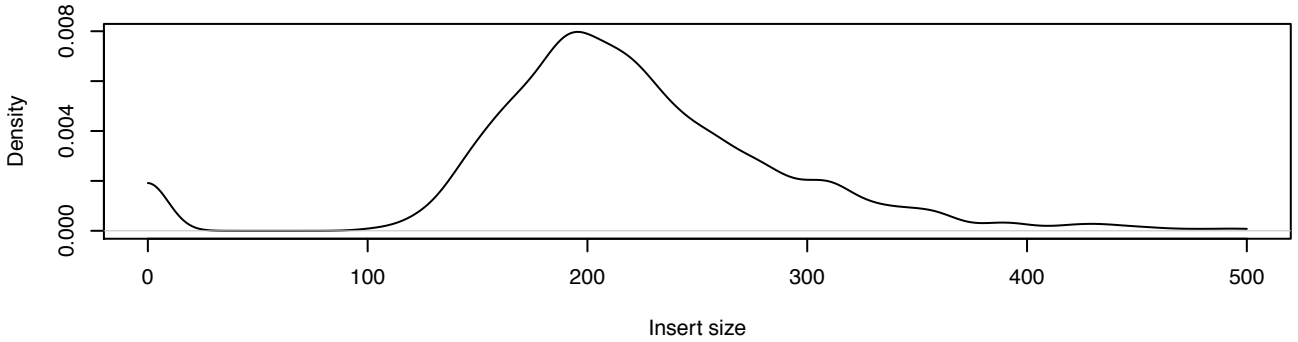
Insert size of dense breakpoints (distance < 100kb)from = 0 to = 1000



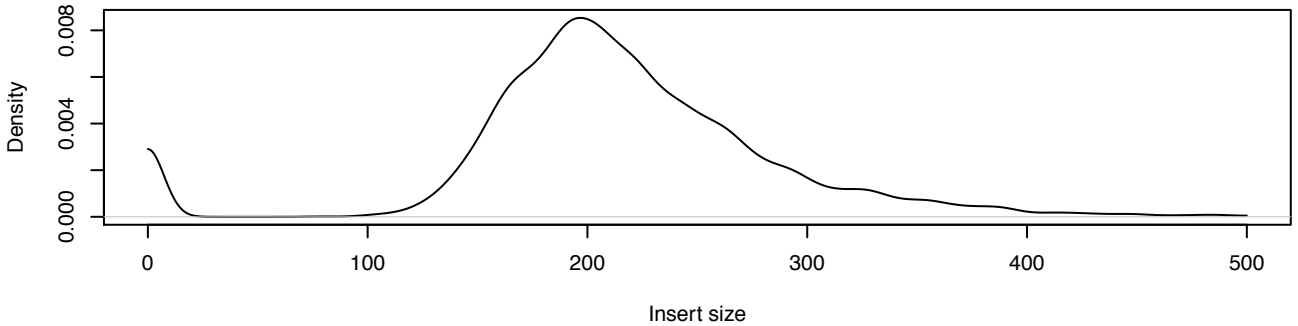
Insert size of reliable breakpoints (distance > 100kb)from = 0 to = 1000



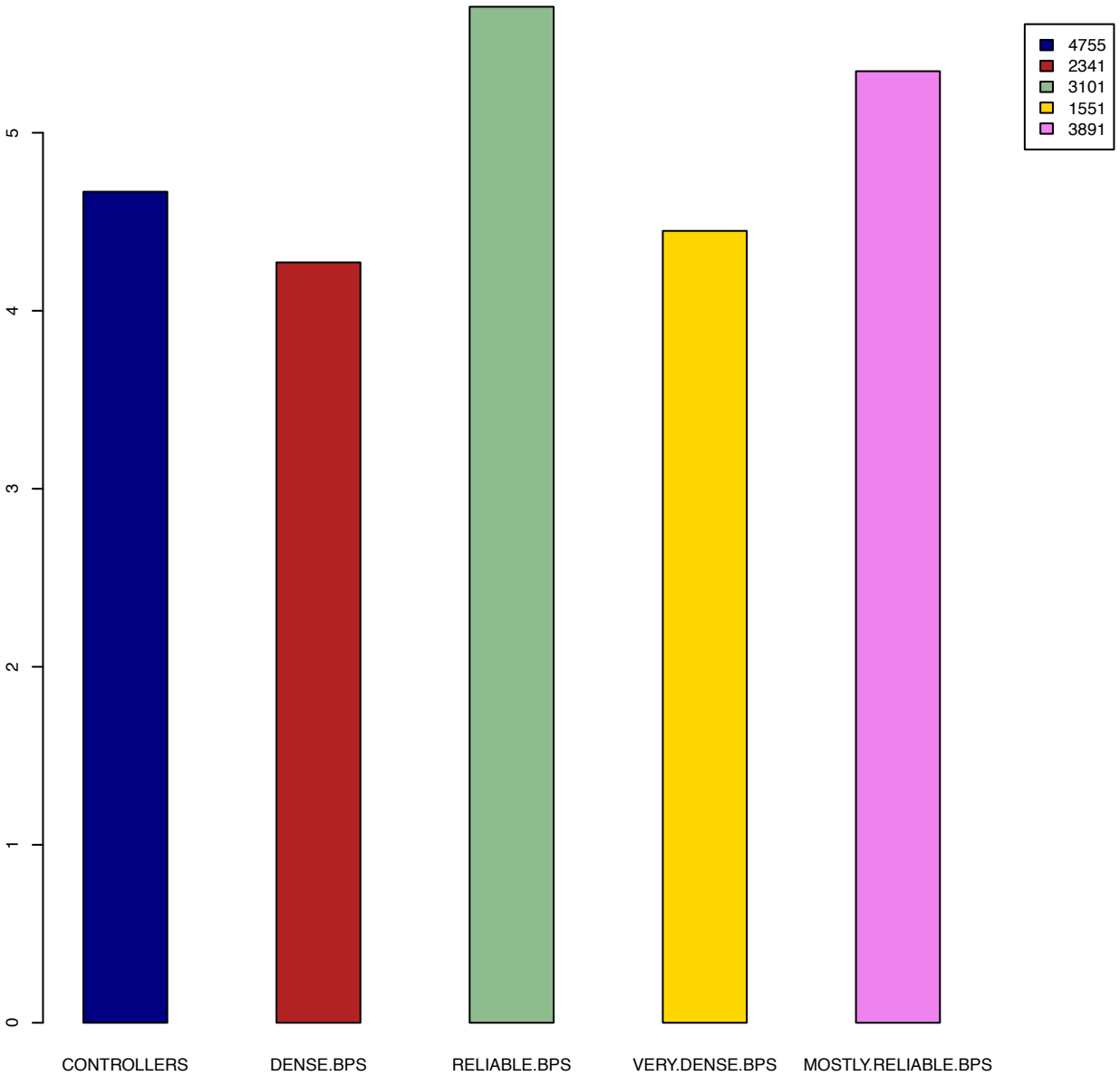
Insert size of very dense breakpoints (distance < 50kb) from = 0 to = 1000



Insert size of mostly reliable breakpoints (distance > 50kb) from = 0 to = 1000



Unpaired reads per cluster



Reads with insert size > 1000

