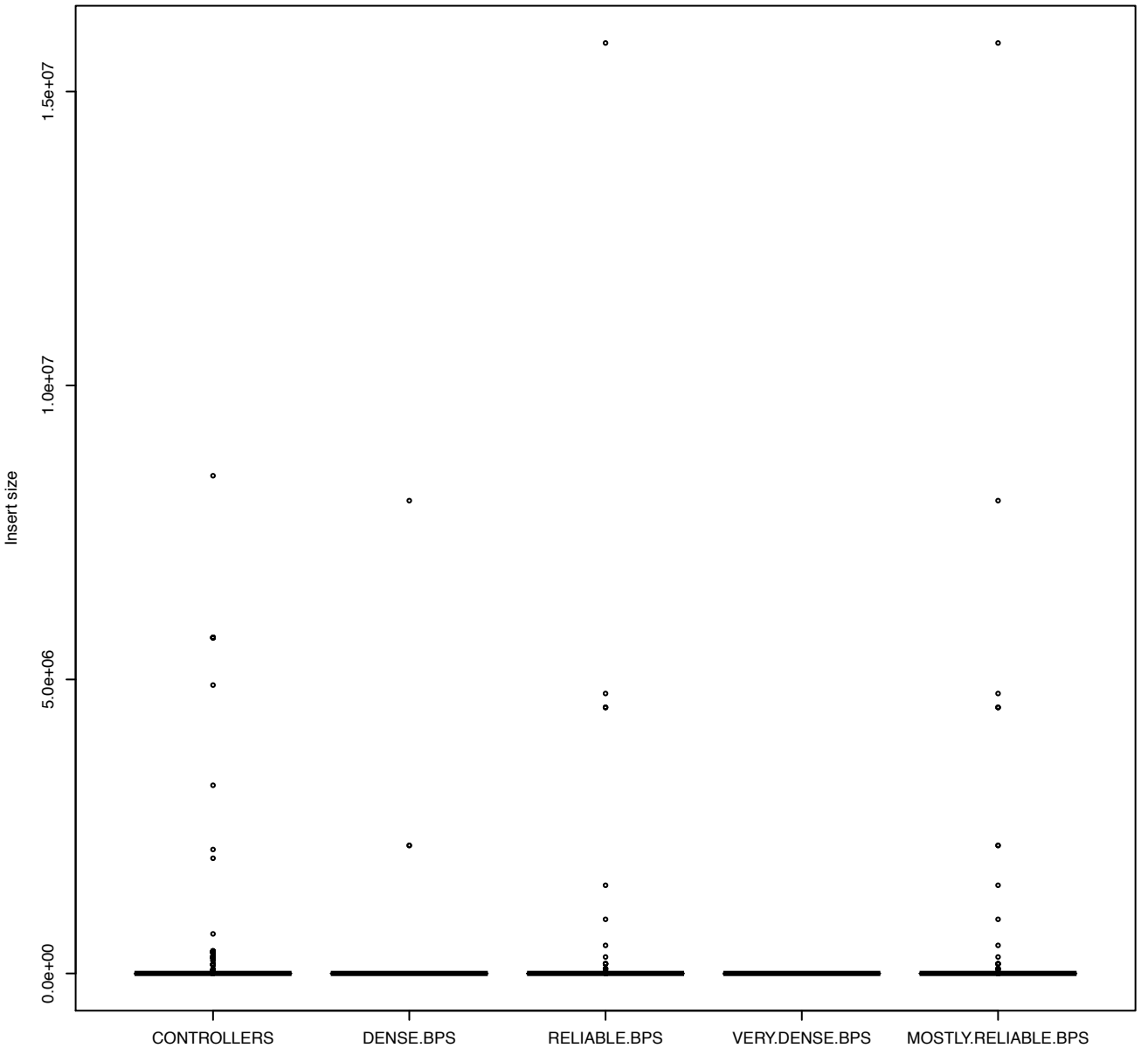
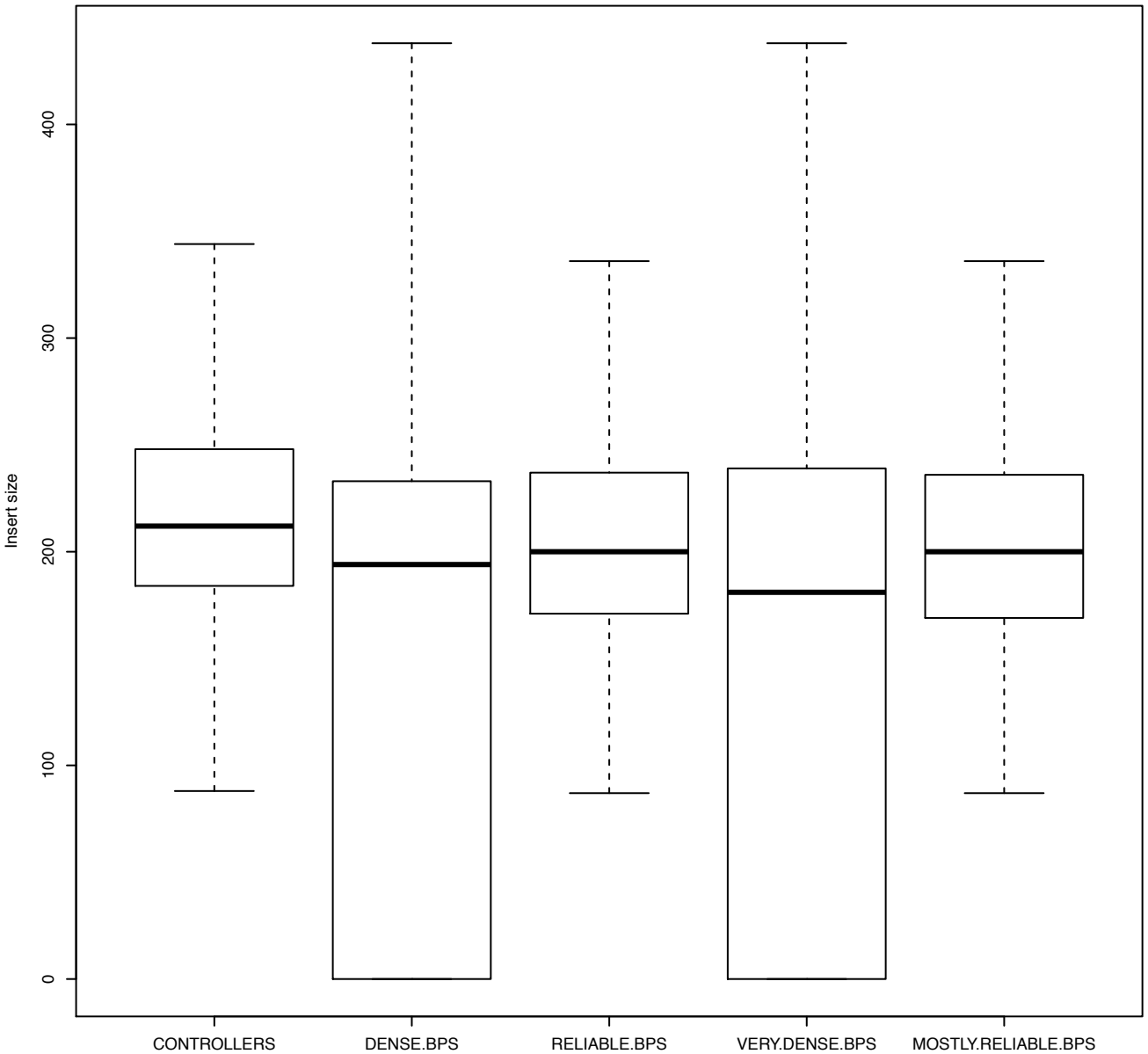


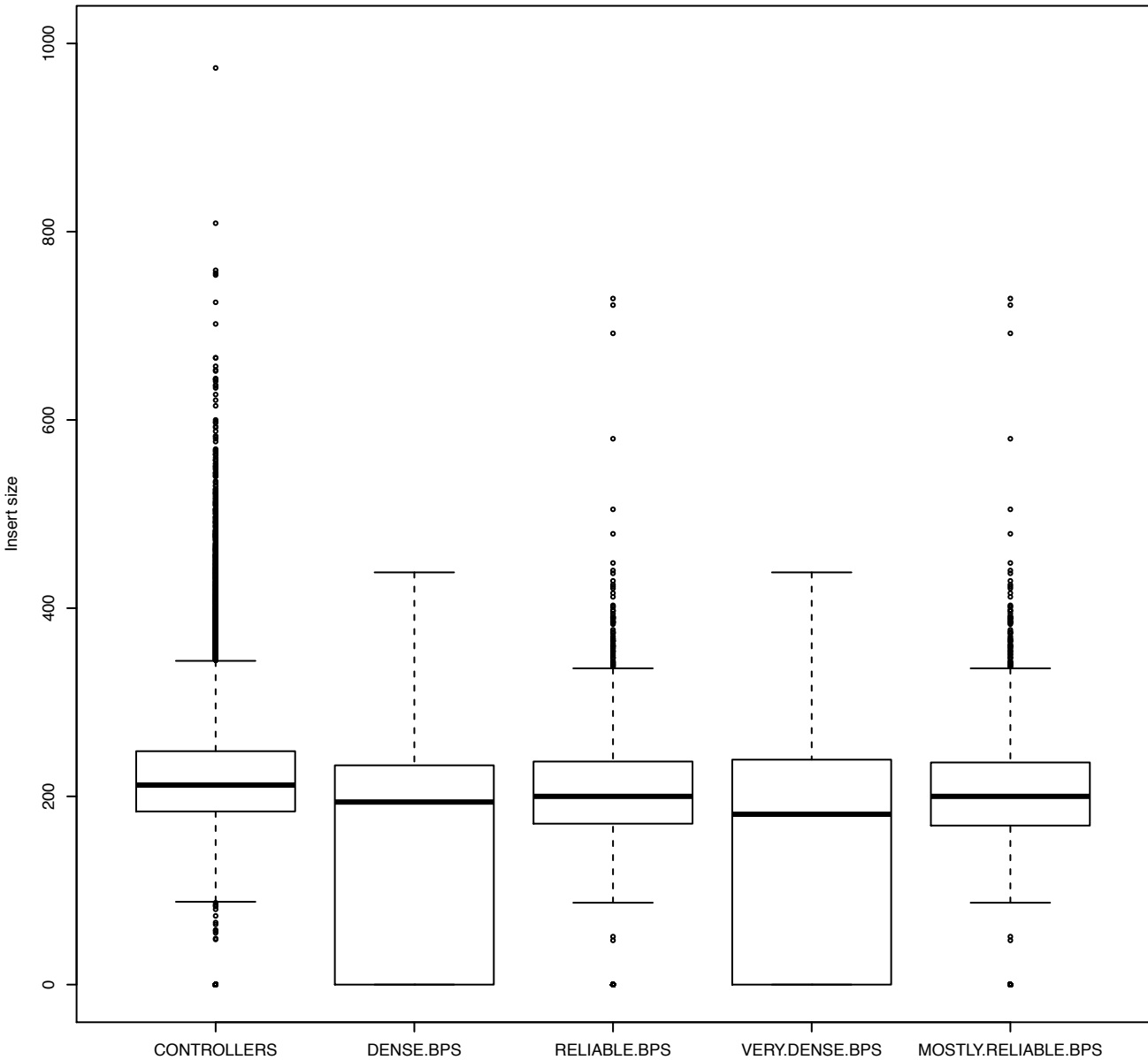
# MAGIC.149



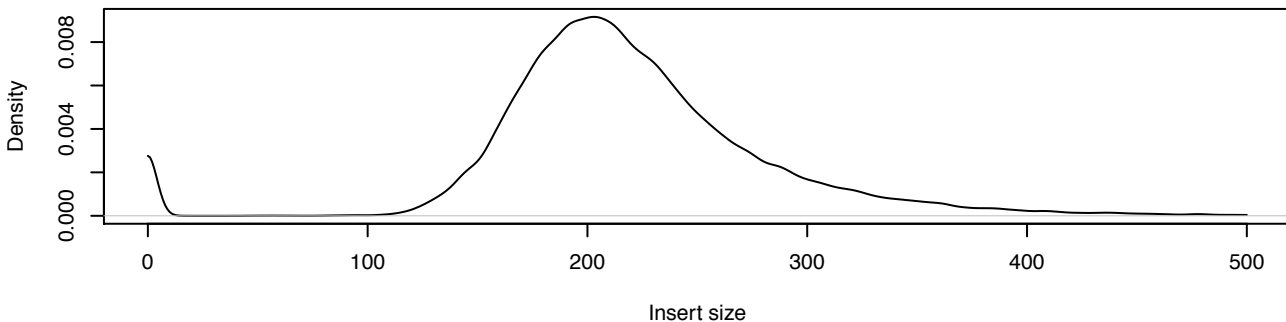
# MAGIC.149



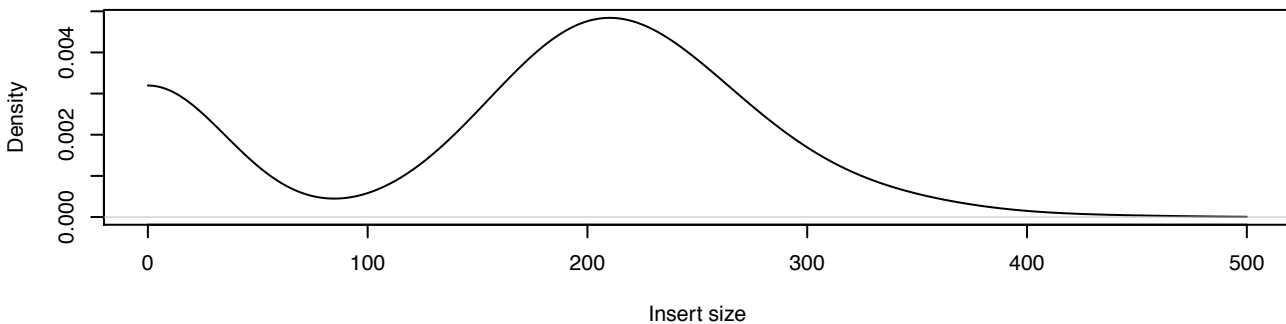
# MAGIC.149



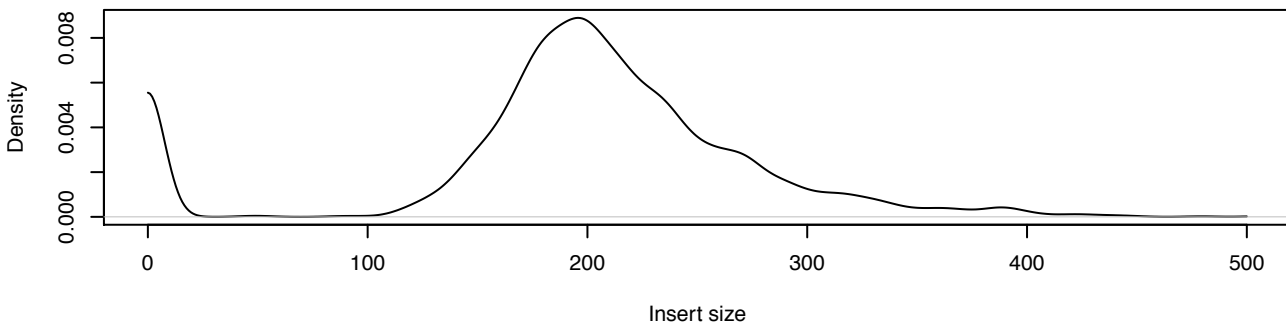
**Insert size inside haplotype blocks (controllers)from = 0 to = 1000**



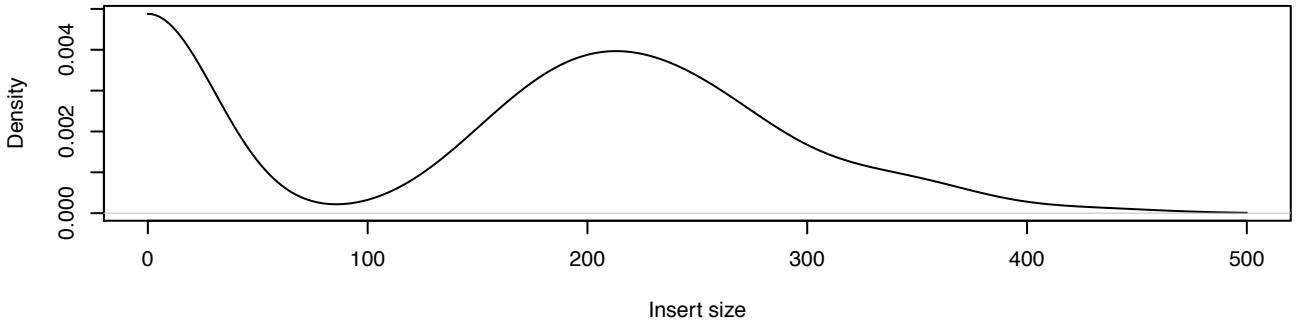
**Insert size of dense breakpoints (distance < 100kb)from = 0 to = 1000**



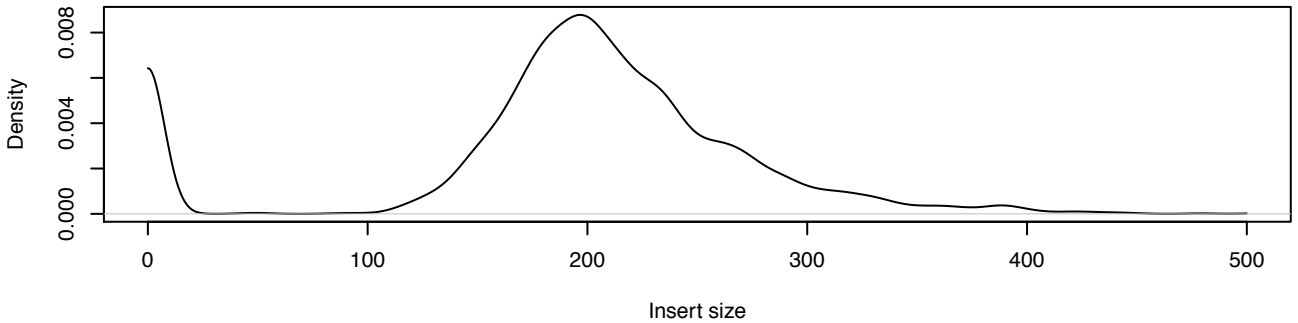
**Insert size of reliable breakpoints (distance > 100kb)from = 0 to = 1000**



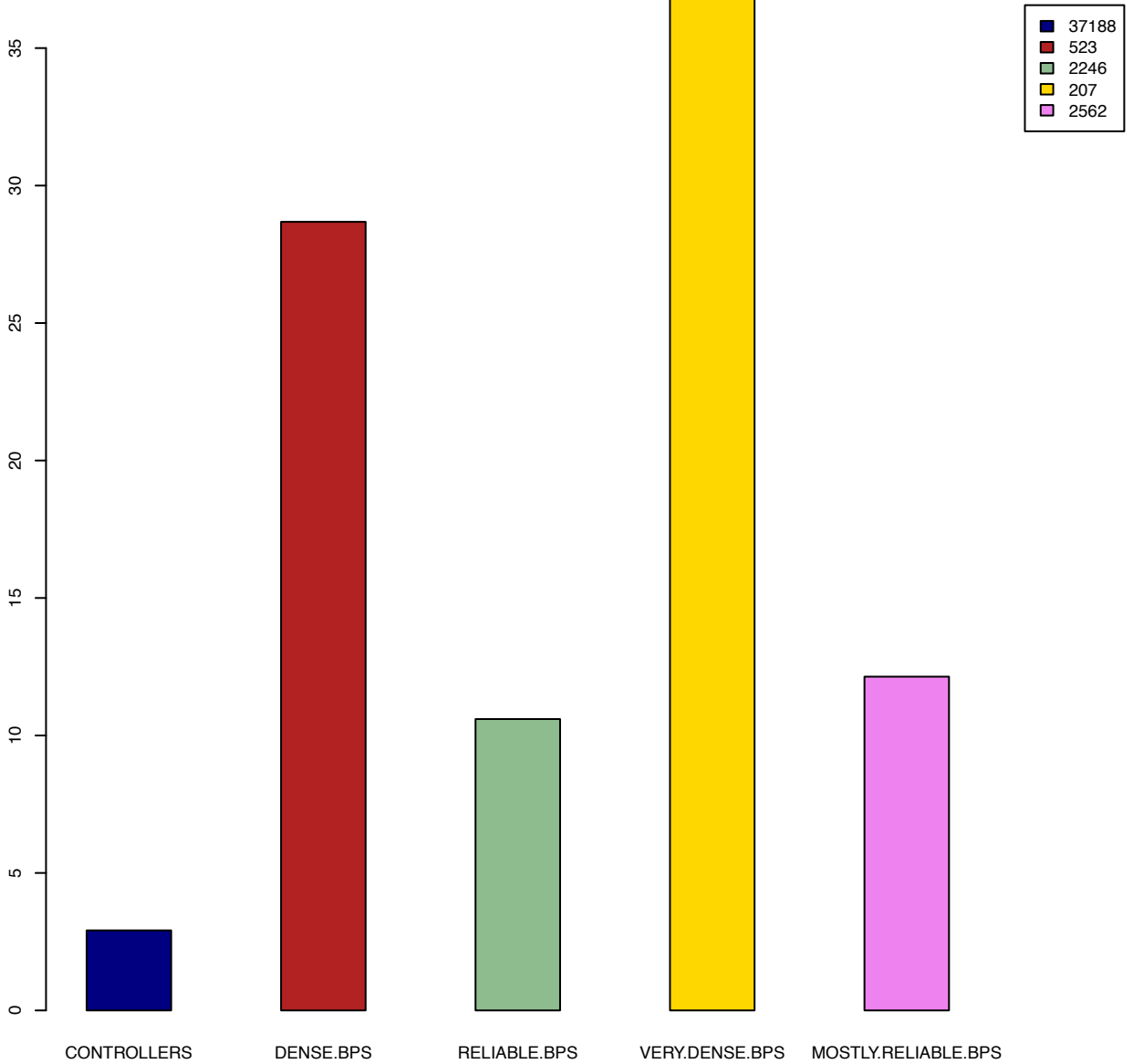
**Insert size of very dense breakpoints (distance < 50kb) from = 0 to = 1000**



**Insert size of mostly reliable breakpoints (distance > 50kb) from = 0 to = 1000**



# Unpaired reads per cluster



# Reads with insert size > 1000

