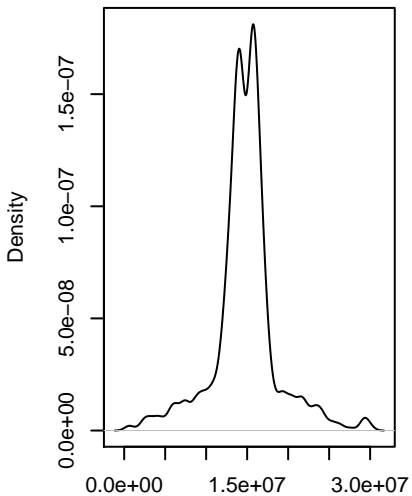
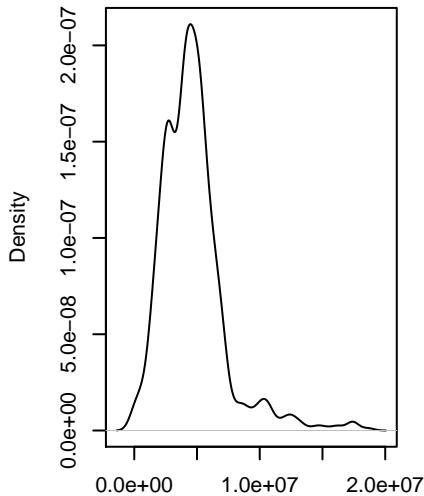
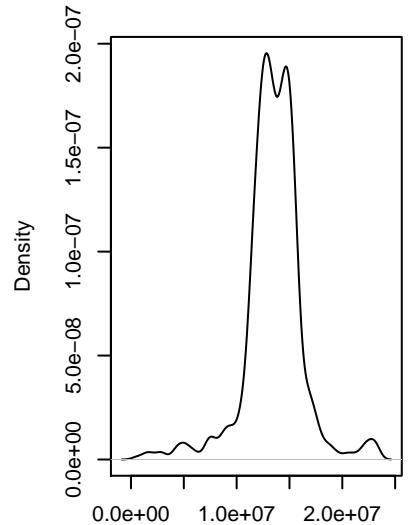


Chromosome 1

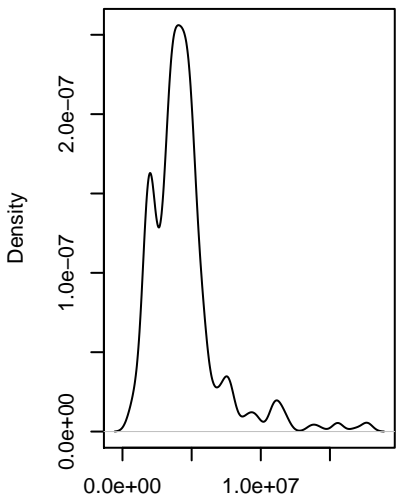
N = 673 Bandwidth = 5.302e+05

Chromosome 2

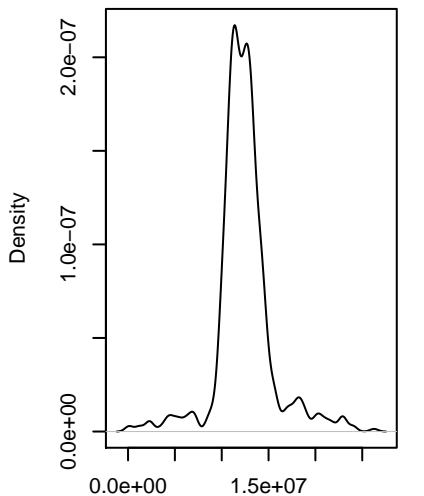
N = 747 Bandwidth = 4.705e+05

Chromosome 3

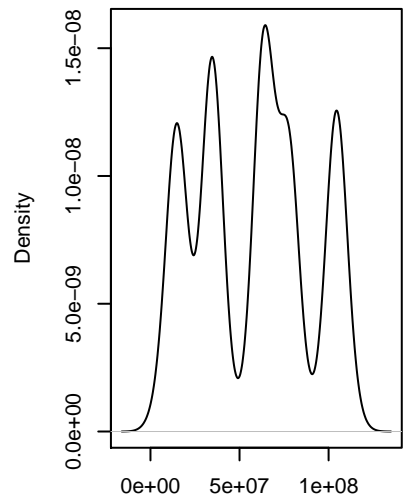
N = 797 Bandwidth = 4.685e+05

Chromosome 4

N = 556 Bandwidth = 3.985e+05

Chromosome 5

N = 665 Bandwidth = 4.264e+05

Whole genome

N = 3438 Bandwidth = 5.533e+06