

OF1 Mice

Nomenclature

Crl:OF1 (outbred)

Strain origin

In 1935, Carworth Farm began to breed a line of mice for vigor and productivity. Progenitors originating from a colony bred in Missouri were bought and the strain was named CF1 (Carworth Farm 1). This strain was introduced to Charles River Laboratories France in 1967, and it acquired the name OF1 (Oncins France 1).

Appearance

Albino

Strain characteristics

- Good breeders
- Rapid growth
- Male are aggressive from 6 weeks of age. This behaviour is even more marked with aging. This can be limited by decreasing the number of animals per cage.

Colony management

A primary colony including monogamous pairs is maintained. The strain genetic uniformity is implemented through a systematic rotation of breeders in the primary colony (4 units Robertson system) and a transfer of these breeders into each breeding unit.

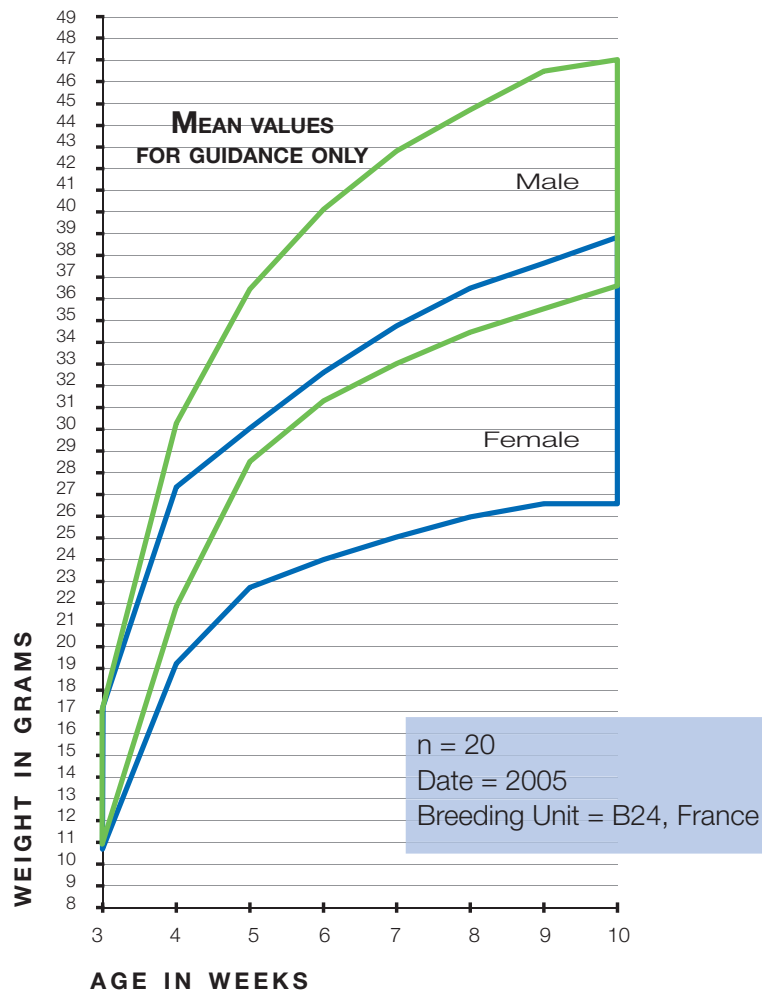
Research applications

Model for general use including :

- Toxicology
- Teratology
- Pharmacology
- Physiology

OF1 Mice

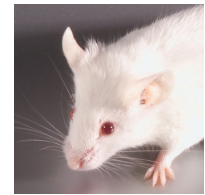
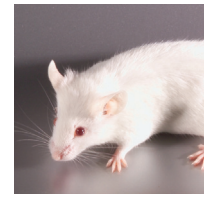
Growth Curve



Data show mean value +/- 1,96 standard deviation
Growth curves may vary slightly from room to room

Breeding system

| | |
|----------------------|--|
| Mating system | Harem - 1 male and 13 females |
| Litter size at birth | 9 - 10 |
| Gestation period | 19 - 20 days |
| Weaning age | 17 - 21 days |
| Watering system | Filtered (0.1 μ m), bottle system |
| Bedding | Sawdust bedding, autoclaved |
| Diet | Rodent VRF1, autoclaved, <i>ad libitum</i> |
| Room temperature | 21 +/- 1 °C |
| Light cycle | 12 -12 (6.00 pm-6.00 am) |




CHARLES RIVER
LABORATORIES

Contact Us
info@eu.crl.com
www.criver.com