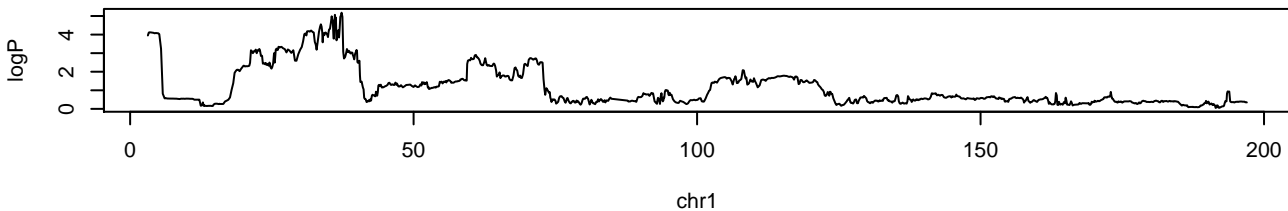
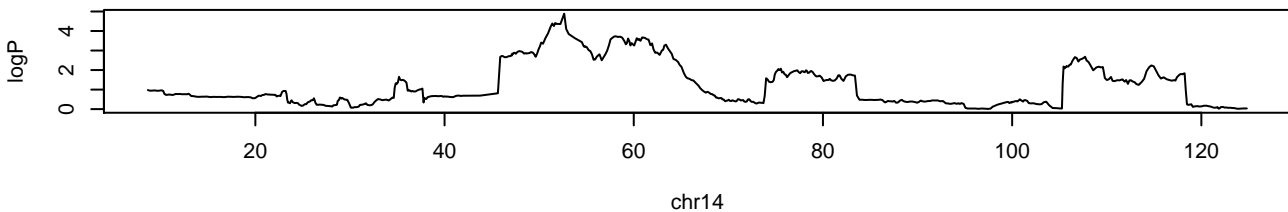


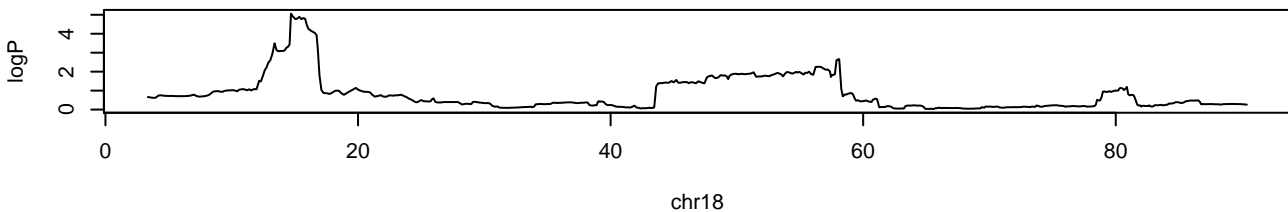
**//APC.Colon.1.2.gscan.RData chr1 37237168 5.17778599048057 0.29**



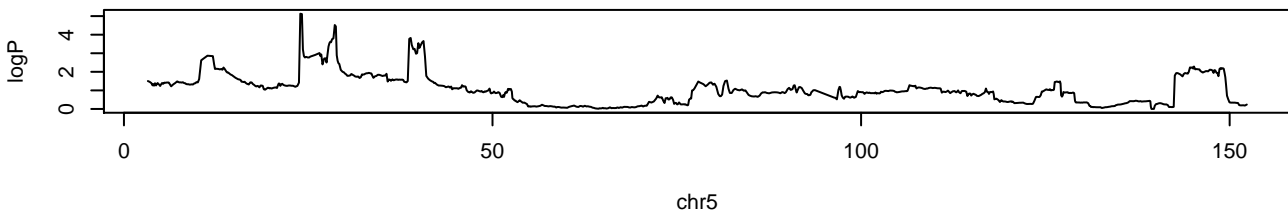
**//APC.Colon.1.2.gscan.RData chr14 52546429 4.88653069413519 0.355**



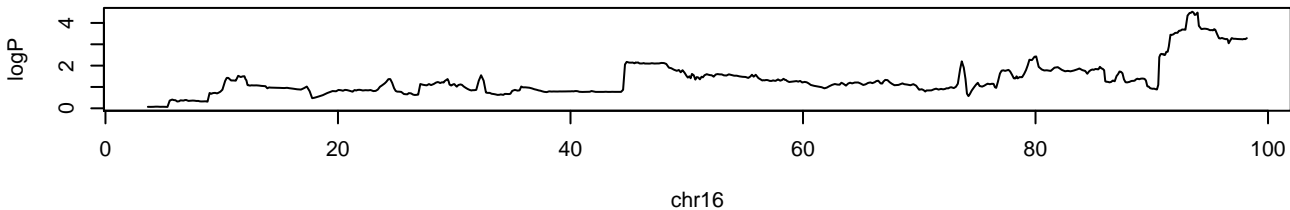
**//APC.Colon.1.2.gscan.RData chr18 14635844 5.05518703608209 0.325**



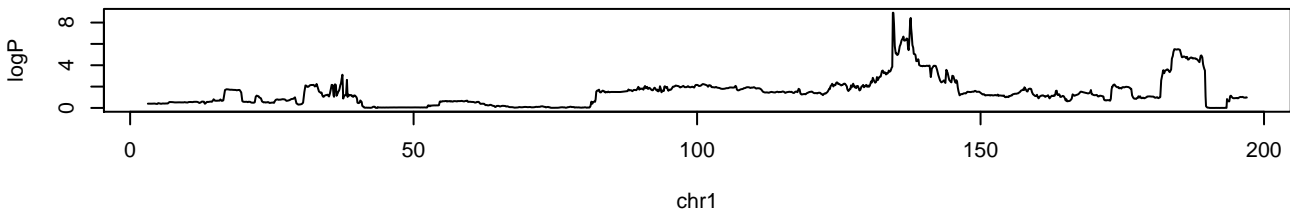
**//APC.Colon.2.3.gscan.RData chr5 23826178 5.12891643619564 0.055**



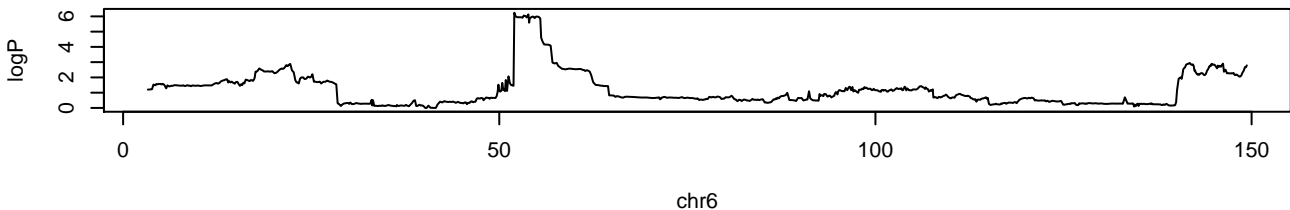
**./APC.Colon.total.gscan.RData chr16 93413688 4.52550567207362 0.48**



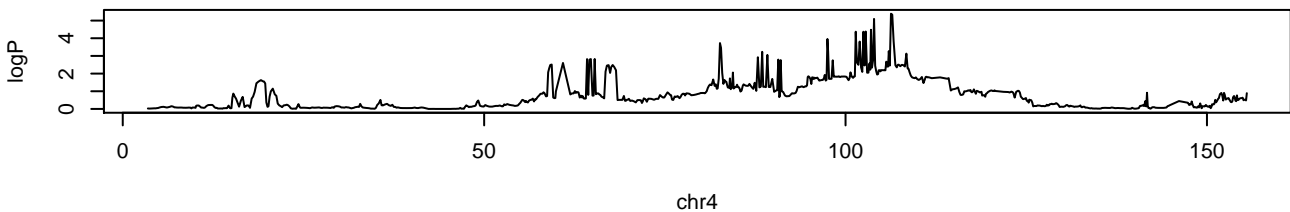
**./APC.SB1.1.2.gscan.RData chr1 134481125 8.92286746339804 0.01**



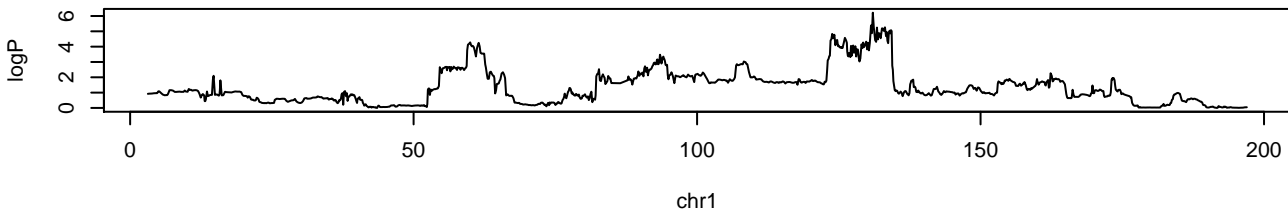
**./APC.SB1.1.2.gscan.RData chr6 51957001 6.23968286582943 0.425**



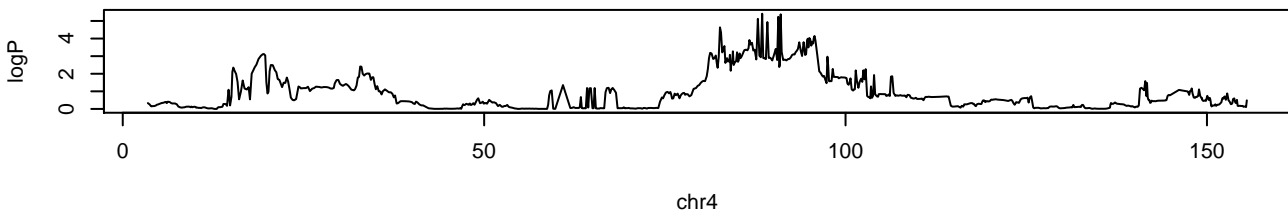
**./APC.SB1.1.gscan.RData chr4 106195502 5.38806062053134 0.265**



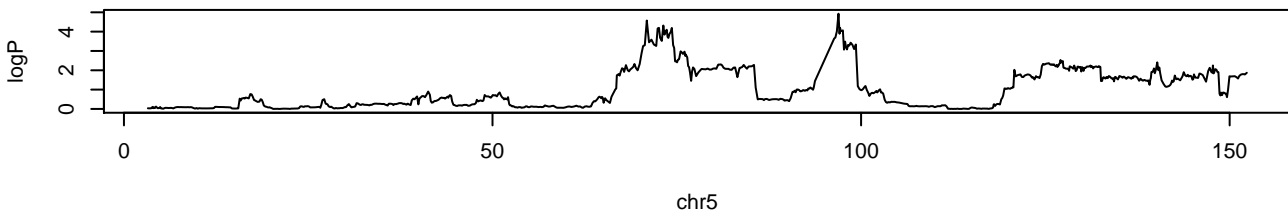
**./APC.SB1.2.3.gscan.RData chr1 130940017 6.21455238087345 0.08**



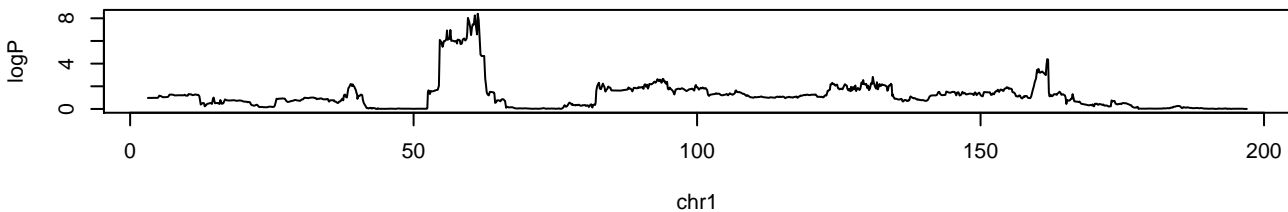
**./APC.SB1.2.3.gscan.RData chr4 88382786 5.41143545236642 0.21**



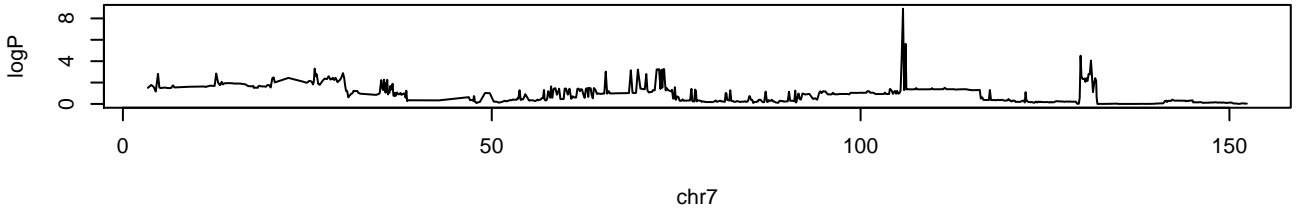
**./APC.SB1.2.3.gscan.RData chr5 96839122 4.92734373006575 0.34**



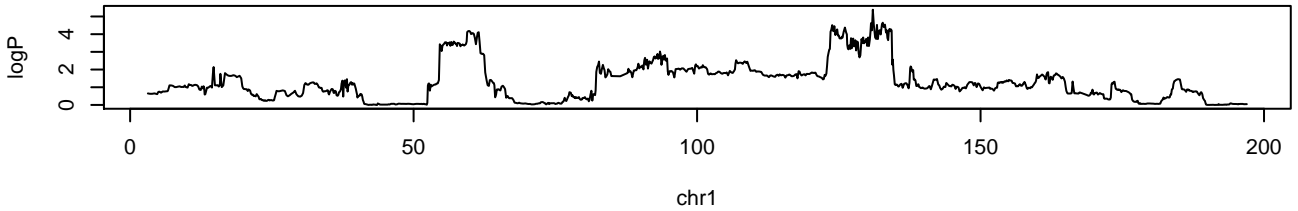
**./APC.SB1.3.gscan.RData chr1 61244353 8.40315790527621 0.28**



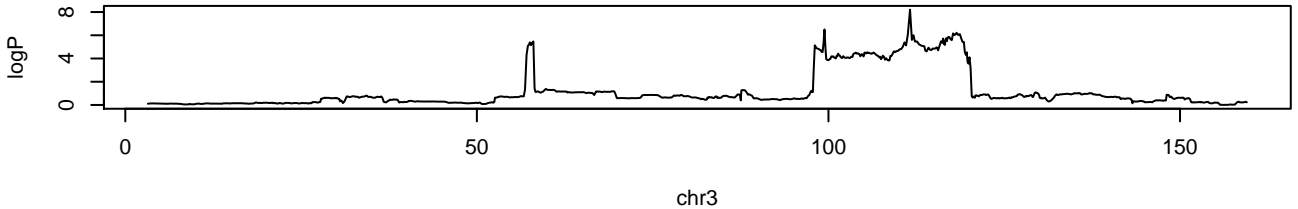
**./APC.SB1.3.gscan.RData chr7 105670069 8.90673232153752 0.195**



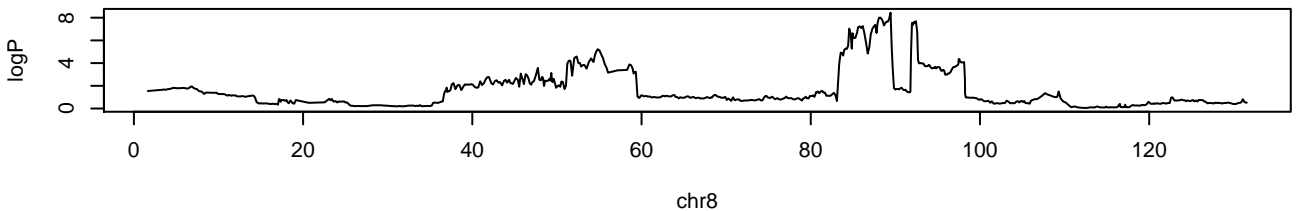
**./APC.SB1.total.gscan.RData chr1 130940017 5.38239261732921 0.46**



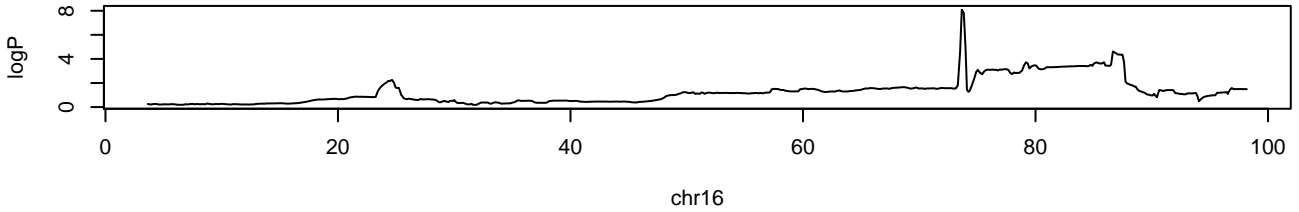
**./APC.SB2.1.2.gscan.RData chr3 111446280 8.20034259675147 0.23**



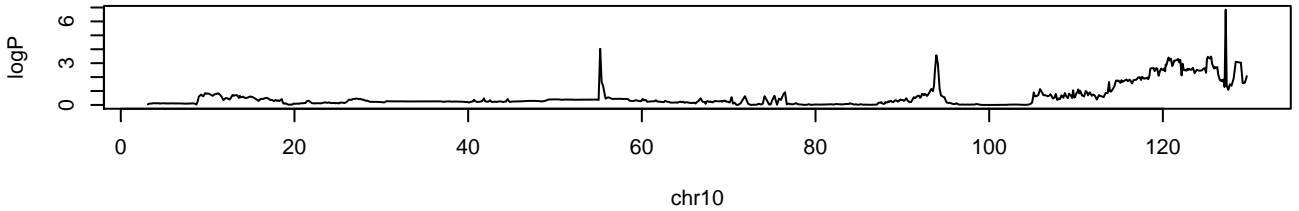
**./APC.SB2.1.2.gscan.RData chr8 89354649 8.43895998109069 0.19**



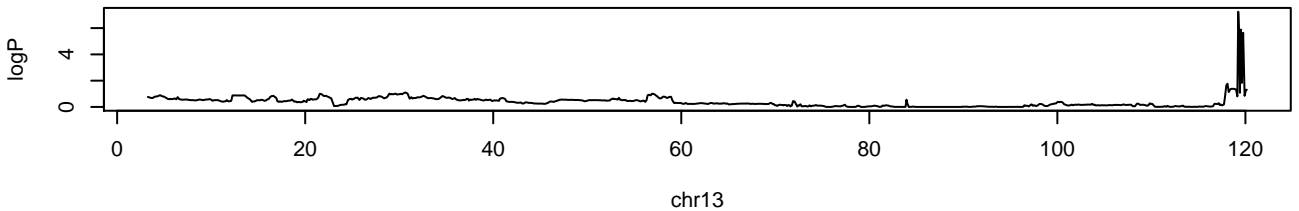
**./APC.SB2.1.2.gscan.RData chr16 73590273 8.0861900831716 0.25**



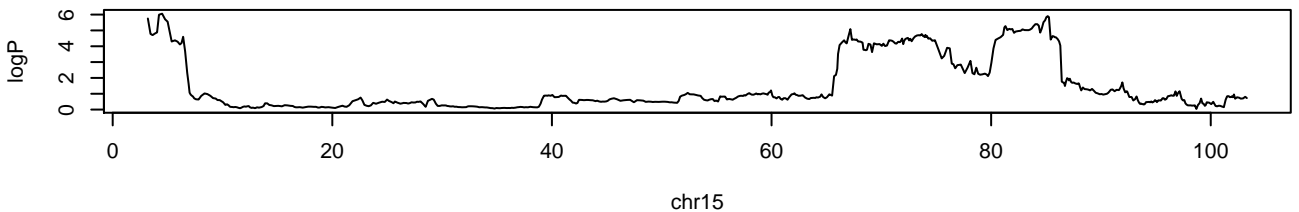
**./APC.SB2.1.gscan.RData chr10 127186952 6.84063581426532 0.175**



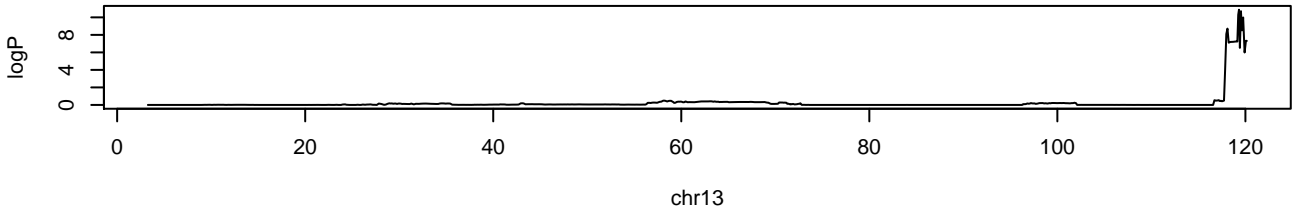
**./APC.SB2.1.gscan.RData chr13 119201473 7.24845016521578 0.09**



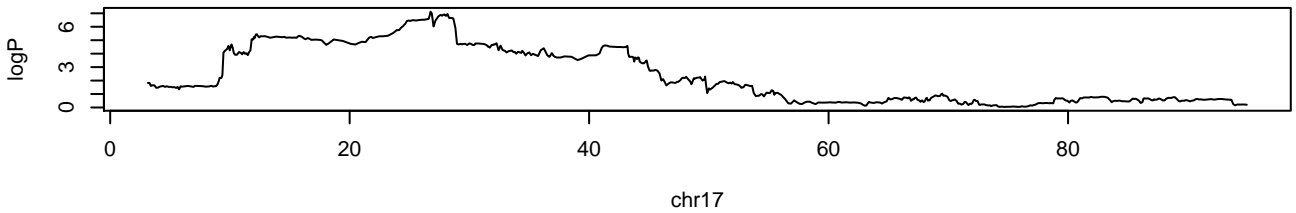
**./APC.SB2.1.gscan.RData chr15 4324784 6.05492429787282 0.46**



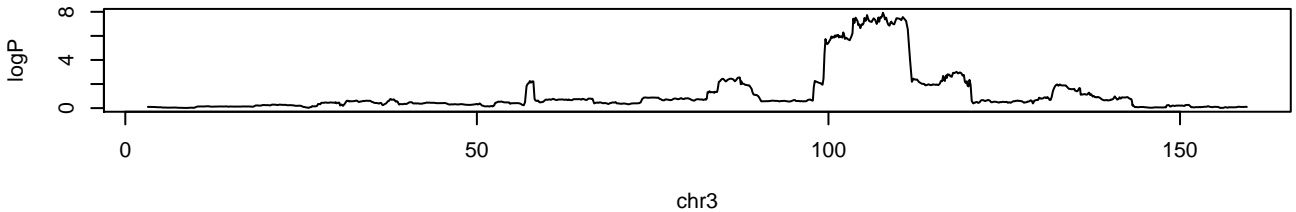
**//APC.SB2.3.gscan.RData chr13 119274558 10.872329298496 0.245**



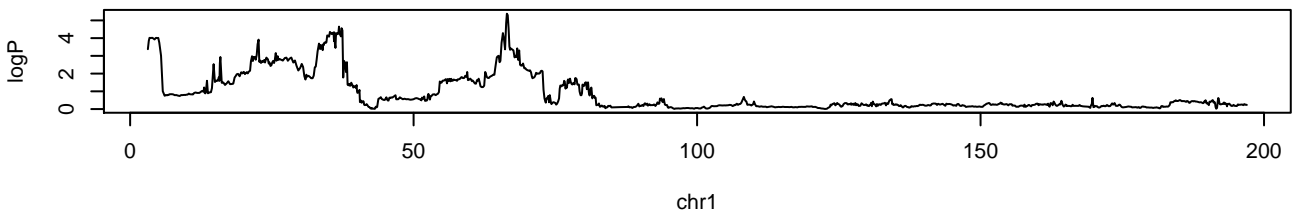
**//APC.SB2.total.gscan.RData chr17 26721426 7.11762273045293 0.1**



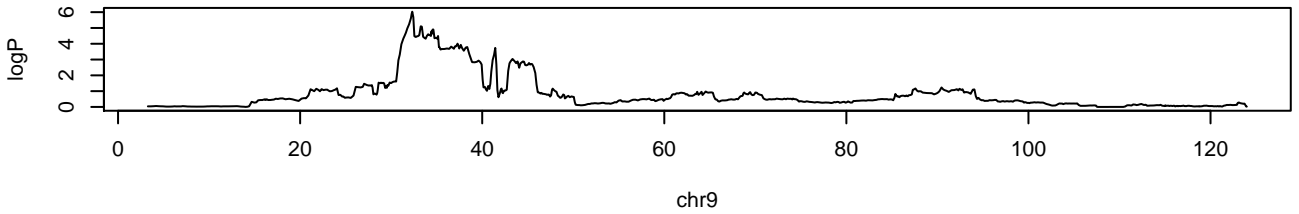
**//APC.SB3.1.2.gscan.RData chr3 107695806 7.92559927578862 0.26**



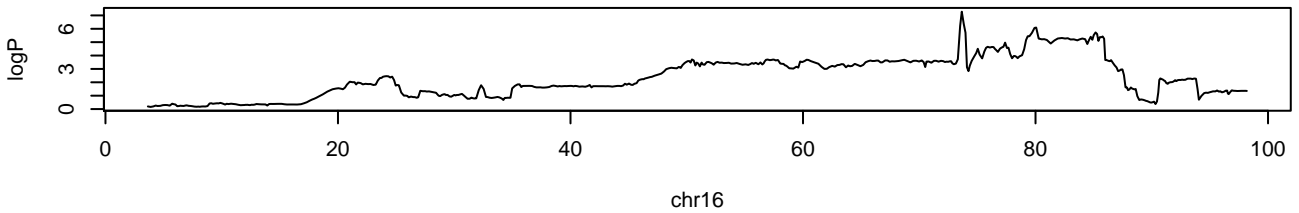
**//APC.SB3.2.3.gscan.RData chr1 66402351 5.37658726658366 0.485**



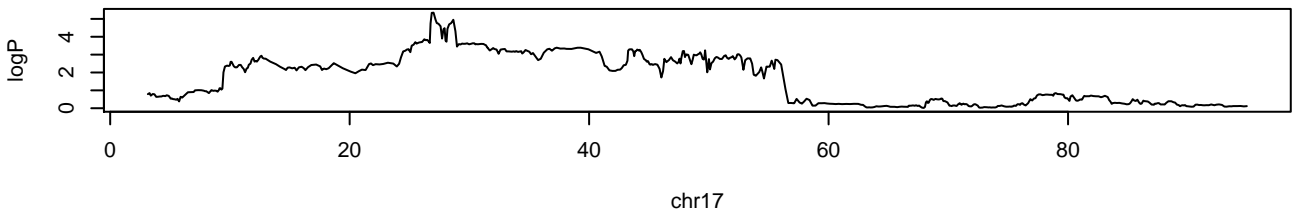
**./APC.SB3.2.3.gscan.RData chr9 32267523 6.02841953894924 0.23**



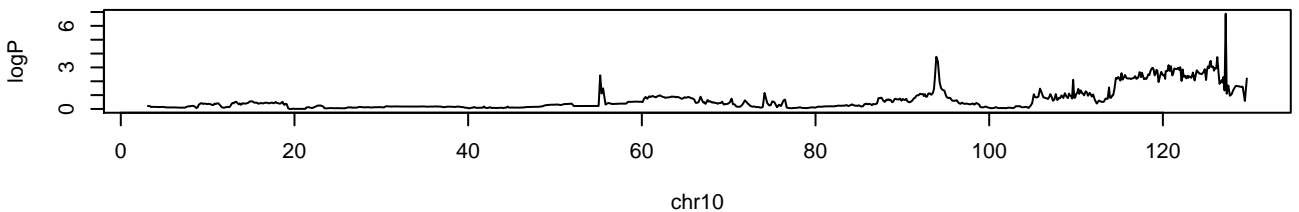
**./APC.SB3.2.3.gscan.RData chr16 73590273 7.27657723608398 0.03**



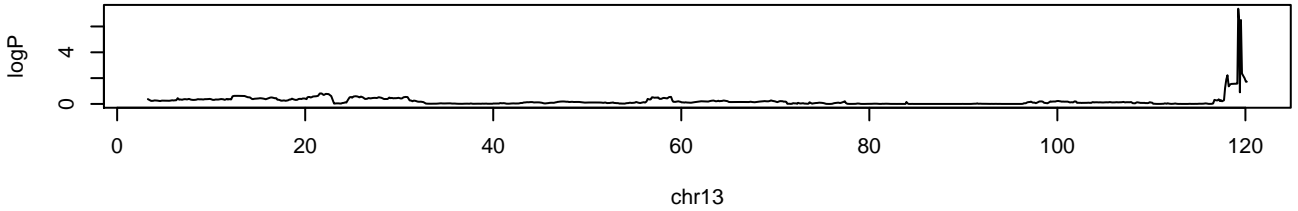
**./APC.SB3.2.3.gscan.RData chr17 26921321 5.34615915876745 0.495**



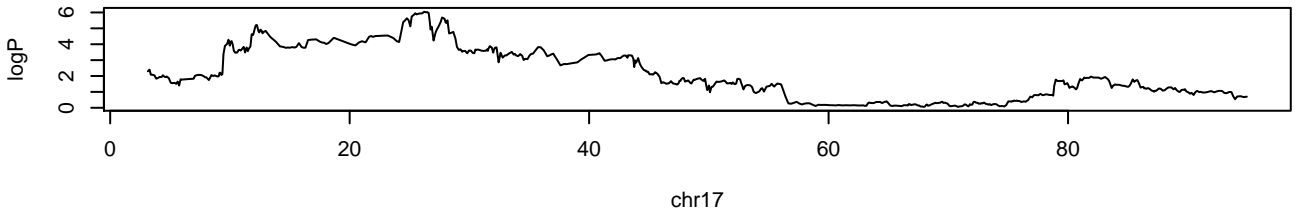
**./APC.SB3.3.gscan.RData chr10 127186952 6.87787582077941 0.335**



**./APC.SB3.3.gscan.RData chr13 119201473 7.37518727605837 0.17**



**./APC.SB3.total.gscan.RData chr17 26147078 6.04681551726429 0.275**



**./APC.Total.gscan.RData chr17 26147078 4.73821849262289 0.415**

