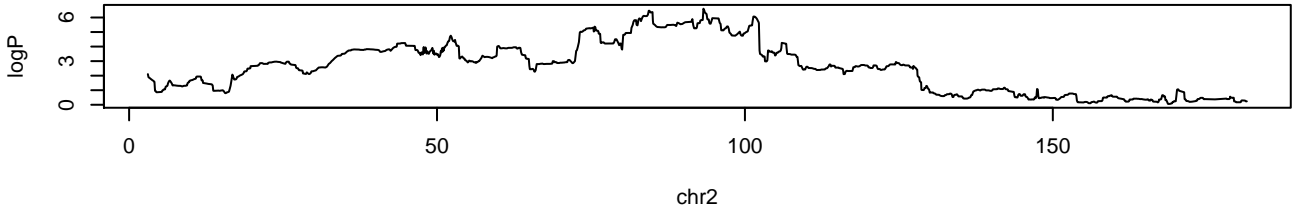
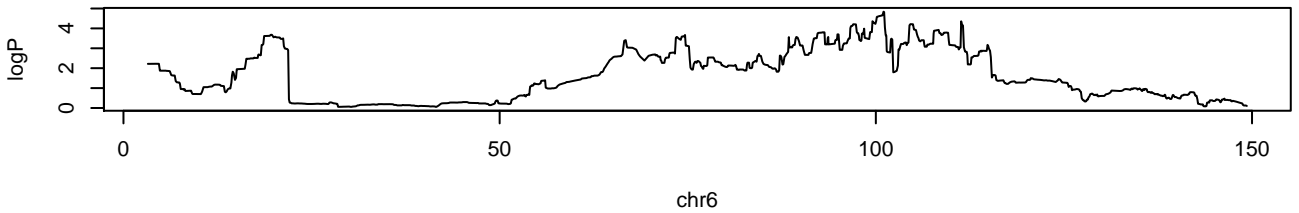


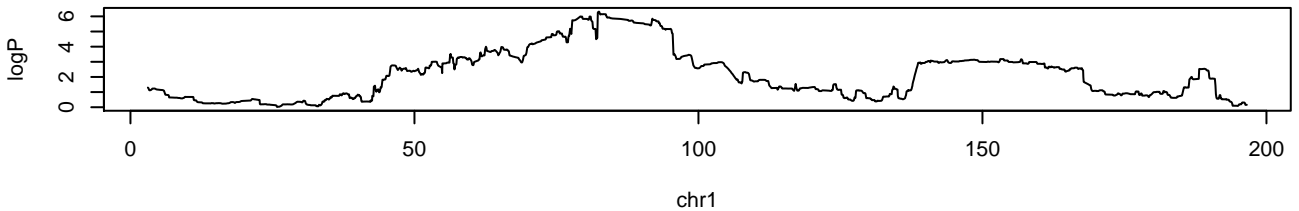
APC.Colon.1.2 chr2 93202785 6.6 0



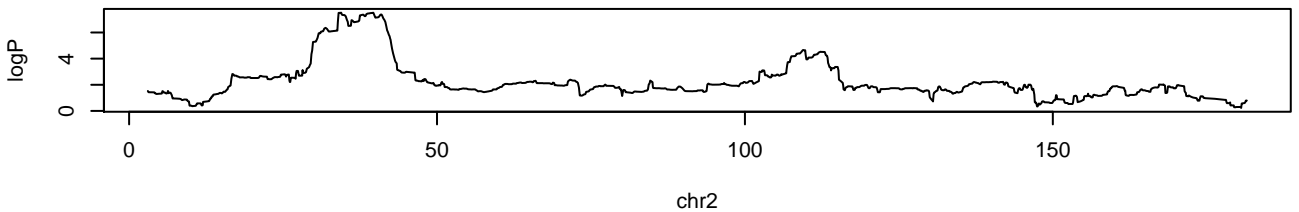
APC.Colon.1 chr6 100998909 4.84 0.014



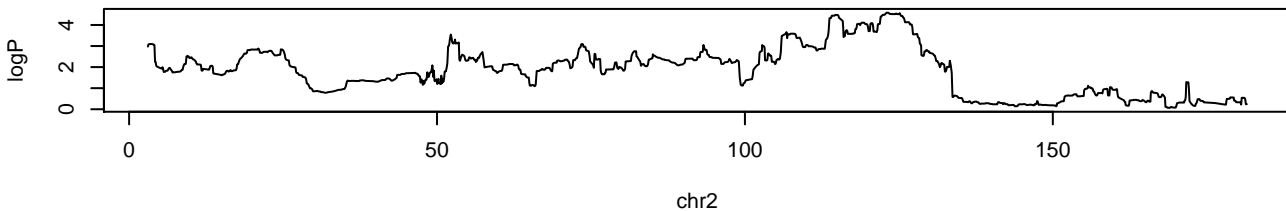
APC.Colon.2.3 chr1 82463336 6.31 0.064



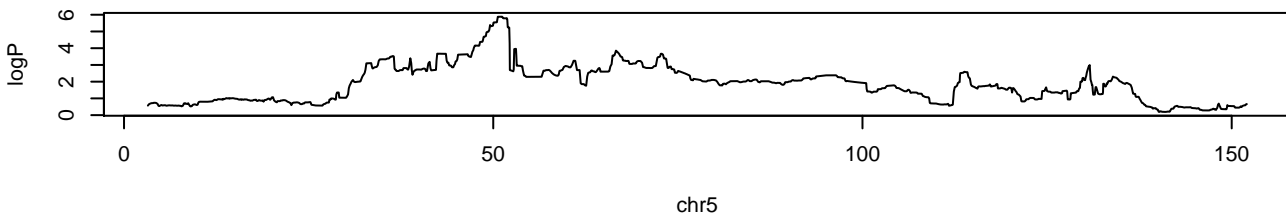
APC.Colon.2.3 chr2 34407741 7.51 0.012



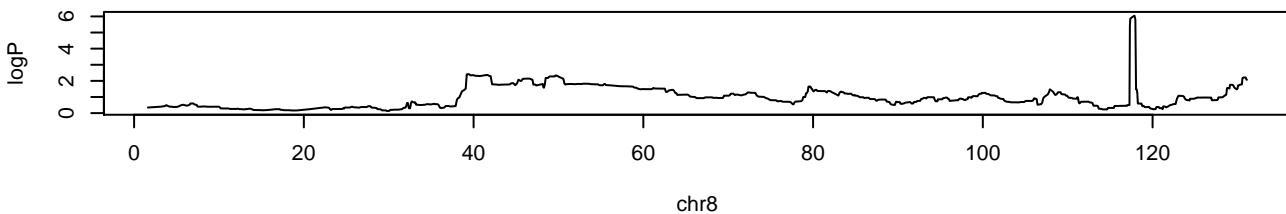
APC.Colon.total chr2 122923005 4.58 0.022



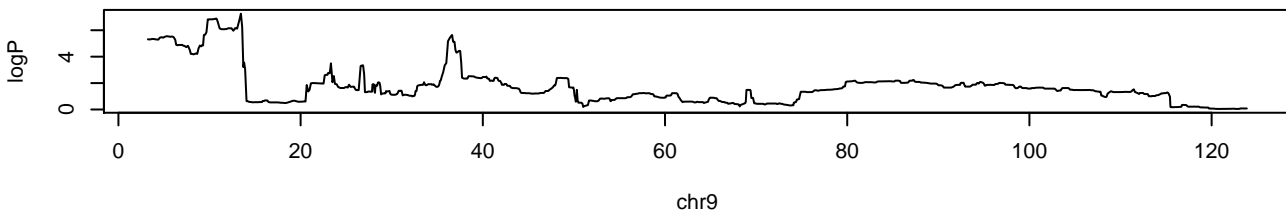
APC.Colon.total chr5 51171968 5.88 0



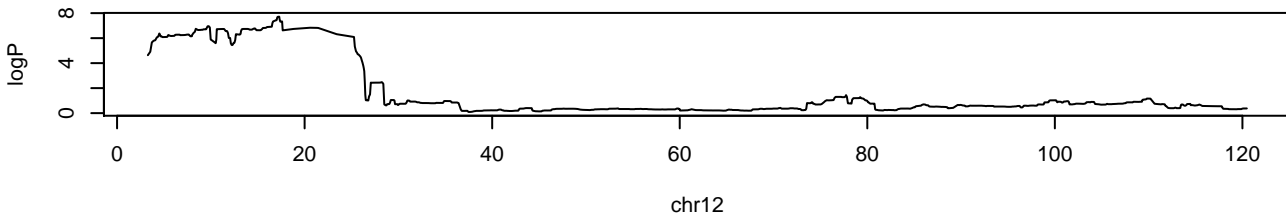
APC.SB1.1.2 chr8 117844561 6.04 0.05



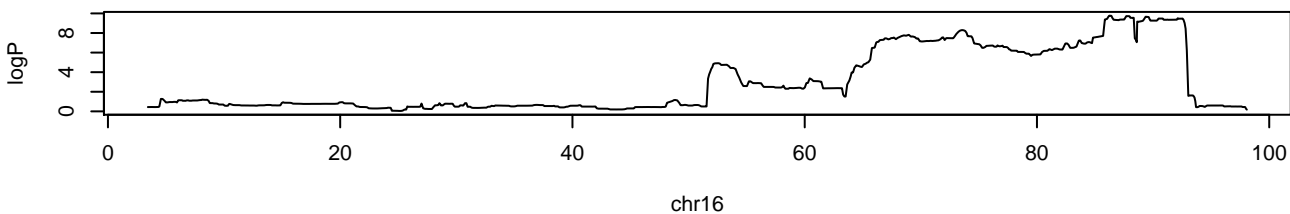
APC.SB1.1.2 chr9 13408905 7.25 0.012



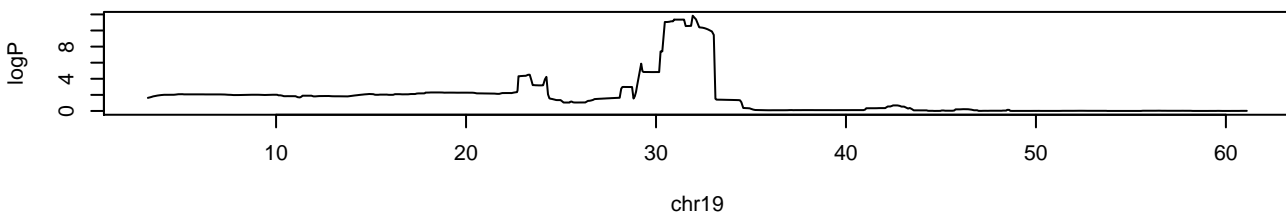
APC.SB1.1.2 chr12 17282962 7.71 0.008



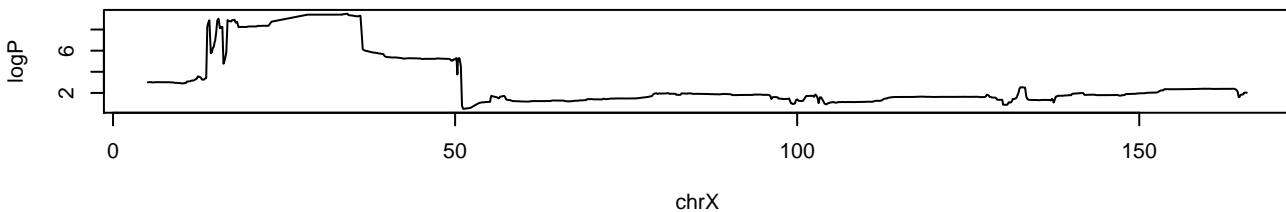
APC.SB1.1 chr16 86179072 9.77 0.002



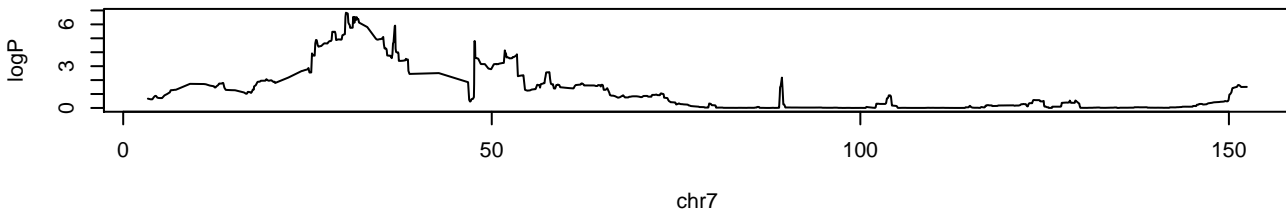
APC.SB1.1 chr19 31886066 11.8 0



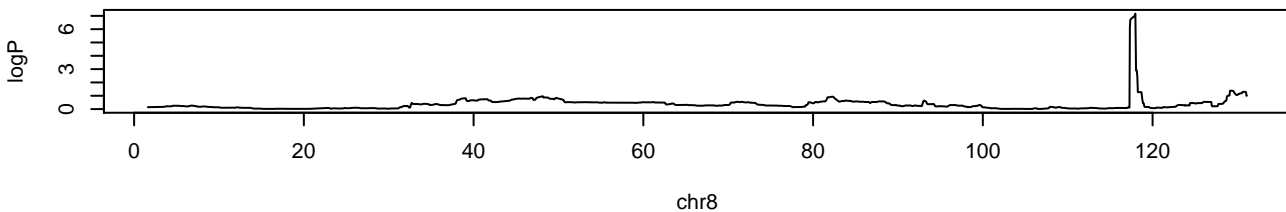
APC.SB1.1 chrX 34219585 9.5 0.002



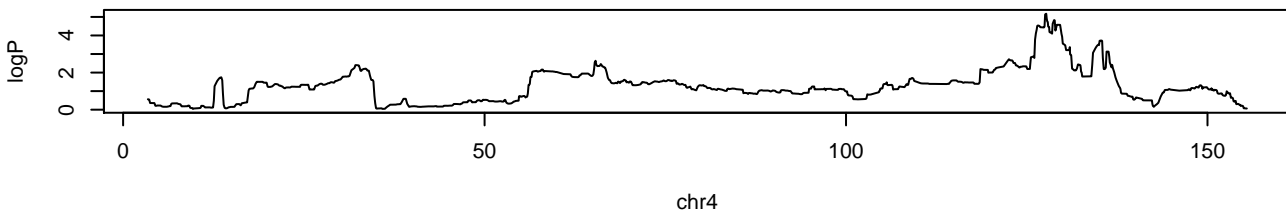
APC.SB1.3 chr7 30191390 6.84 0.07



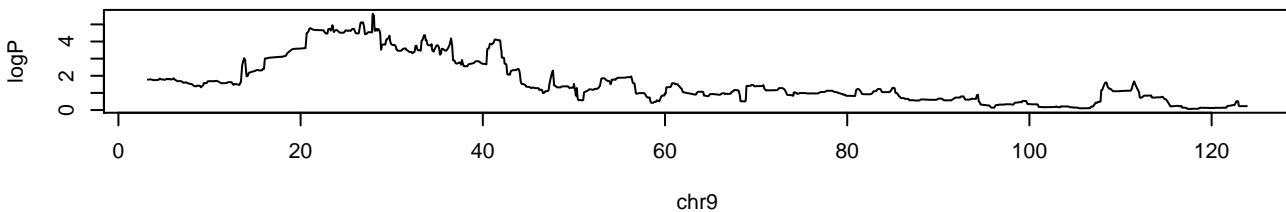
APC.SB1.total chr8 117942441 7.16 0.038



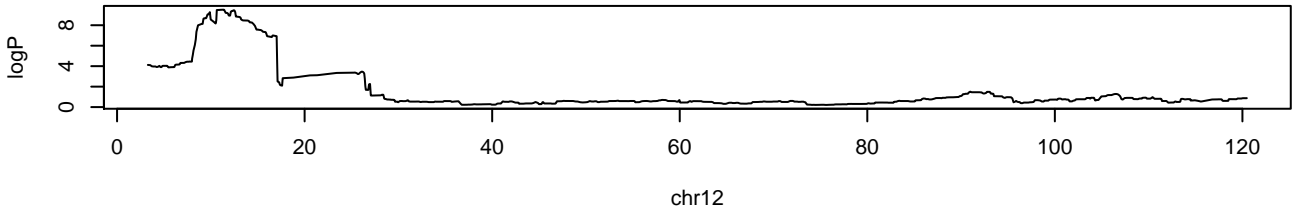
APC.SB2.1.2 chr4 127670271 5.17 0.072



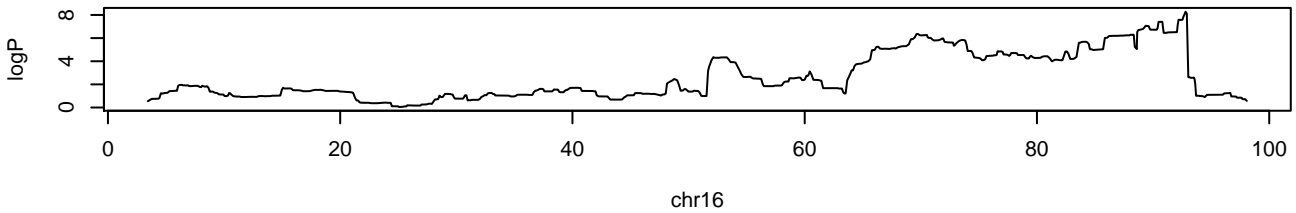
APC.SB2.1.2 chr9 27909239 5.62 0.034



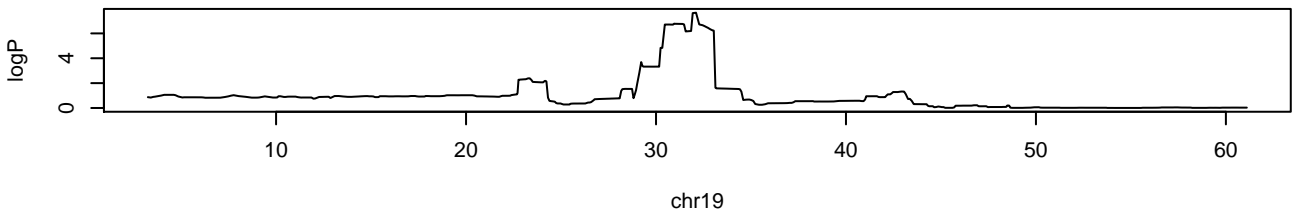
APC.SB2.1.2 chr12 11258877 9.52 0



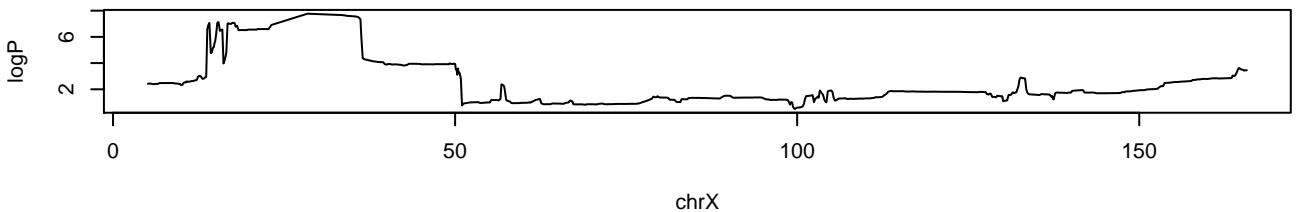
APC.SB2.1 chr16 92761168 8.28 0.012



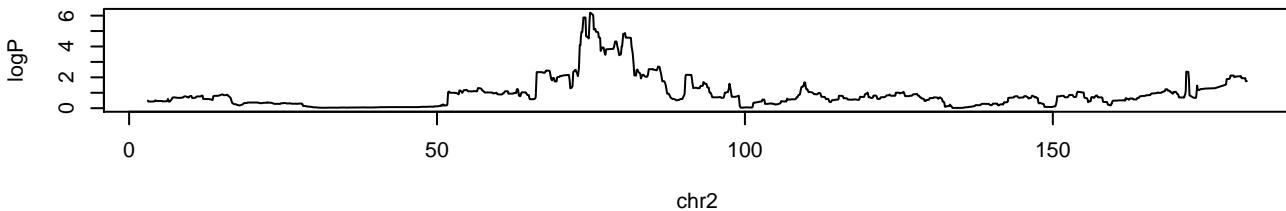
APC.SB2.1 chr19 32037535 7.66 0.028



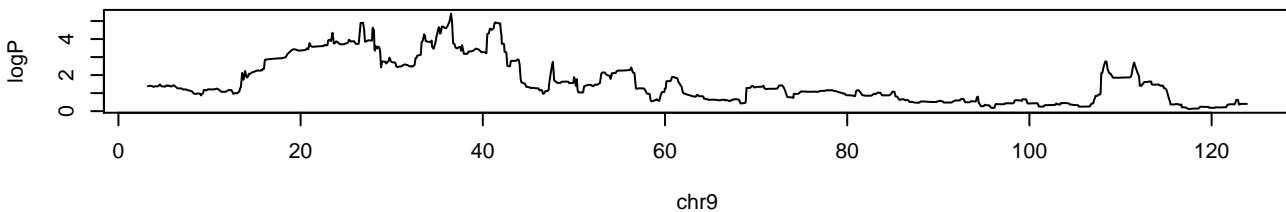
APC.SB2.1 chrX 23522601 7.77 0.02



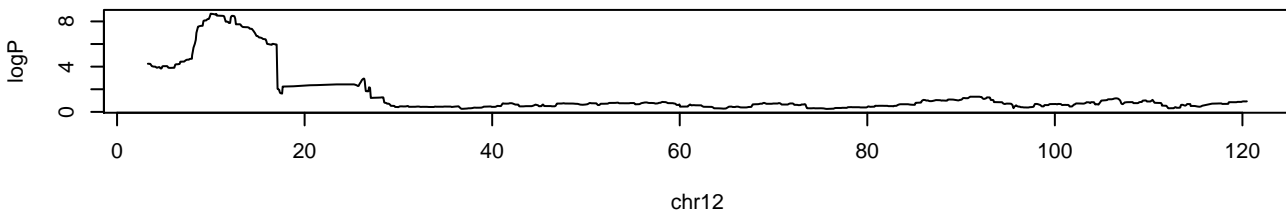
APC.SB2.total chr2 74818178 6.19 0.016



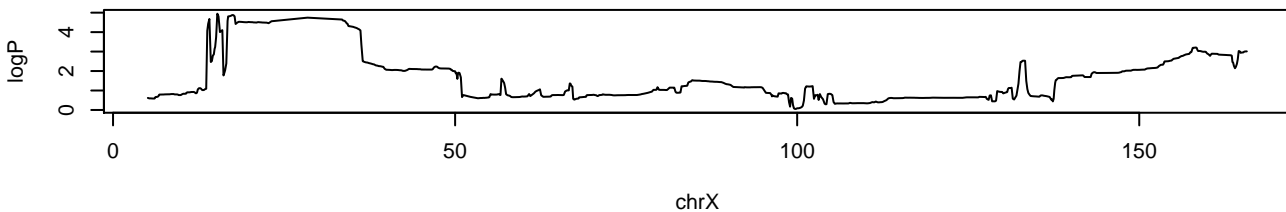
APC.SB2.total chr9 36445205 5.41 0.038



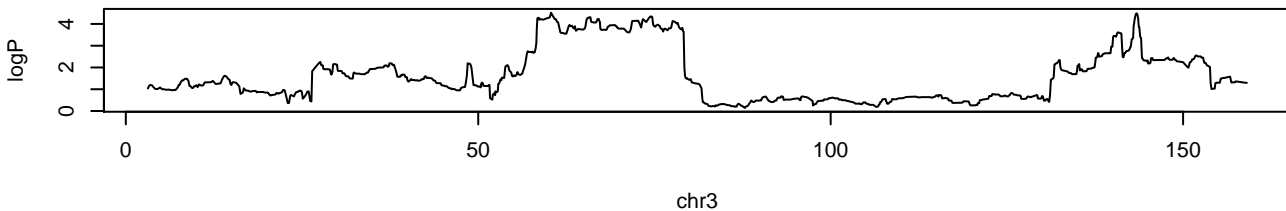
APC.SB2.total chr12 9955141 8.68 0



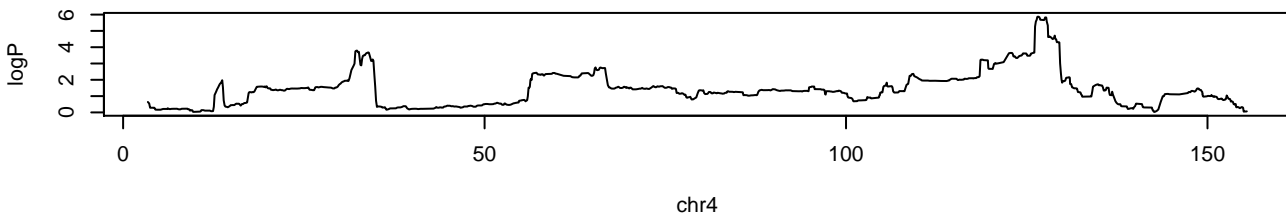
APC.SB2.total chrX 15153747 4.95 0.078



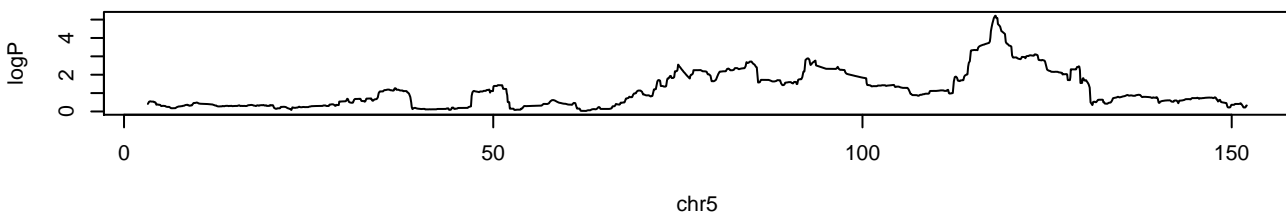
APC.SB3.1.2 chr3 60272236 4.52 0.088



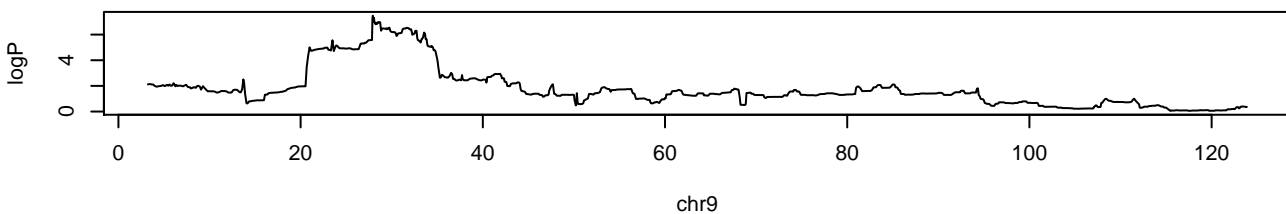
APC.SB3.1.2 chr4 126490042 5.87 0.008



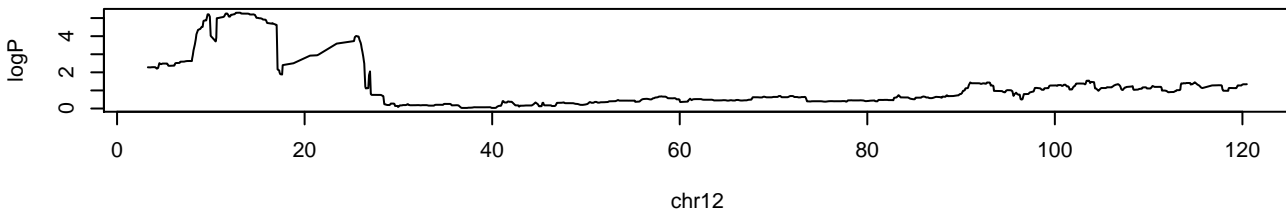
APC.SB3.1.2 chr5 117978110 5.21 0.024



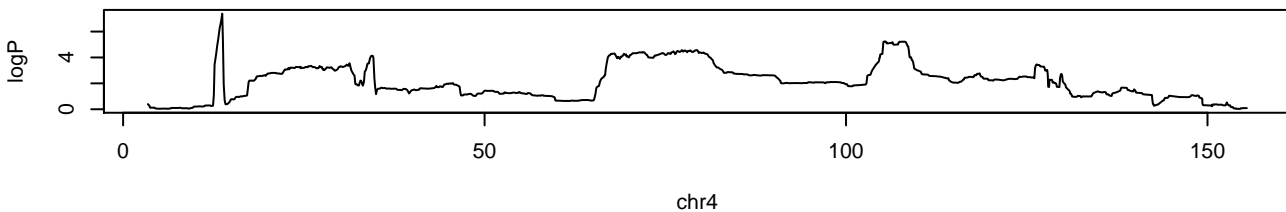
APC.SB3.1.2 chr9 27909239 7.47 0



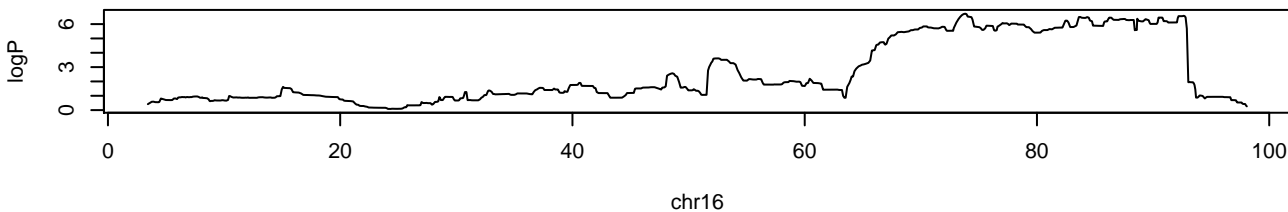
APC.SB3.1.2 chr12 13050433 5.3 0.024



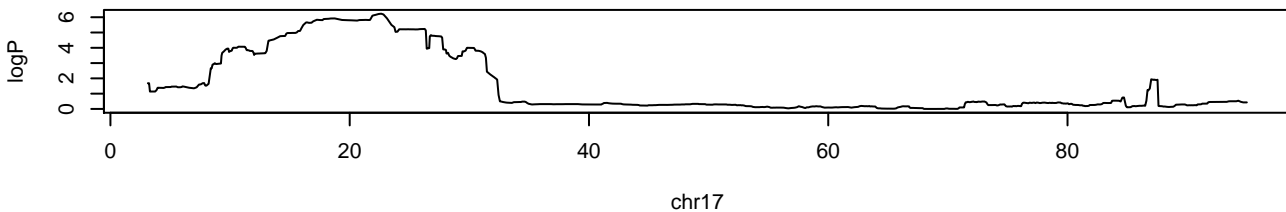
APC.SB3.1 chr4 13655051 7.38 0.02



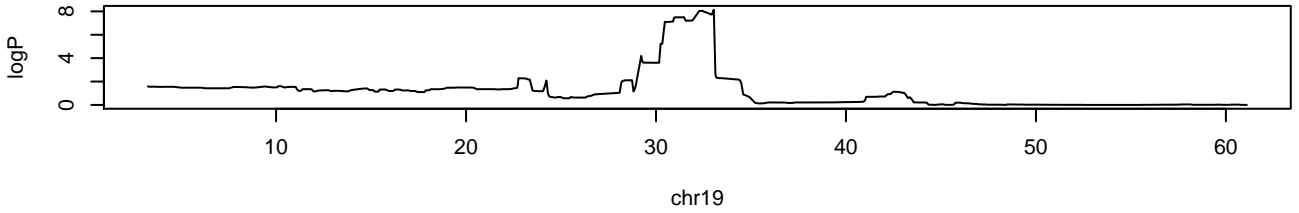
APC.SB3.1 chr16 73770598 6.73 0.05



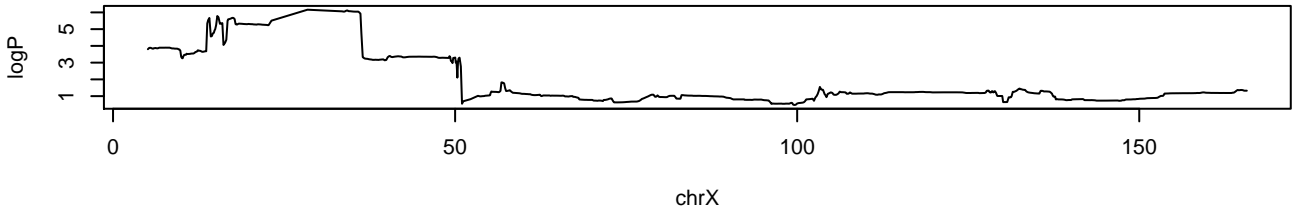
APC.SB3.1 chr17 22508864 6.23 0.082



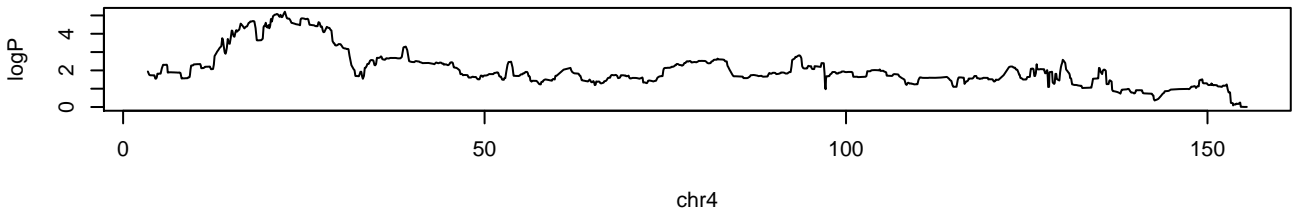
APC.SB3.1 chr19 32984468 8.14 0.01



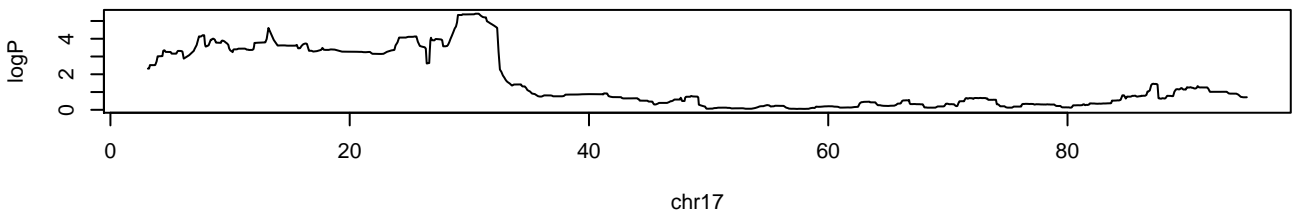
APC.SB3.1 chrX 23522601 6.16 0.084



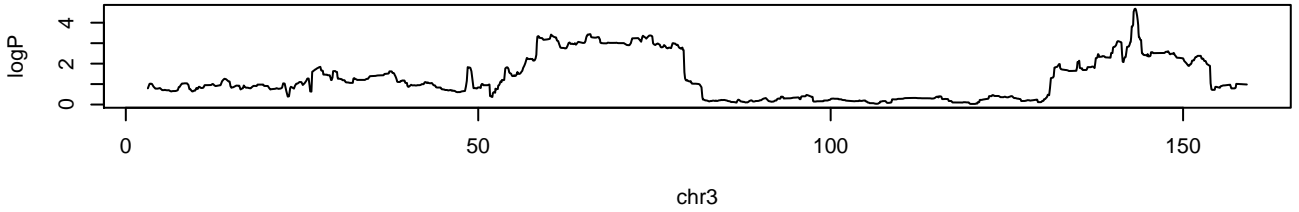
APC.SB3.2.3 chr4 22309142 5.2 0.04



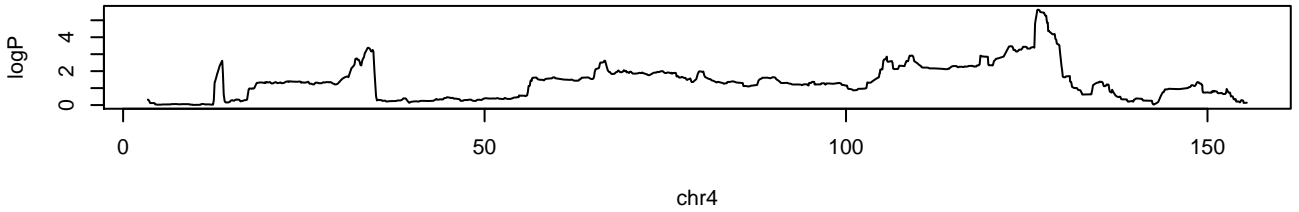
APC.SB3.2.3 chr17 30493705 5.41 0.034



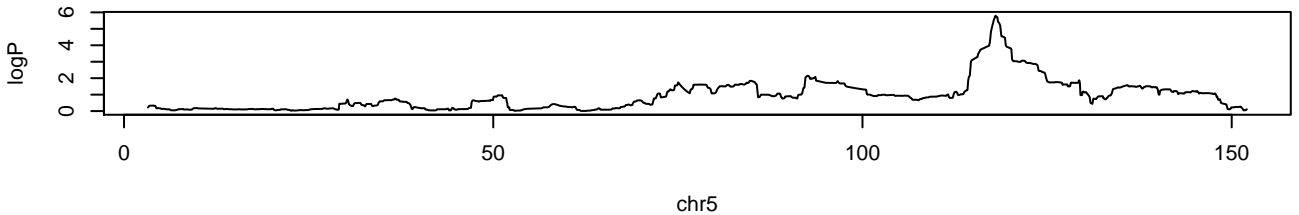
APC.SB3.total chr3 143156125 4.68 0.04



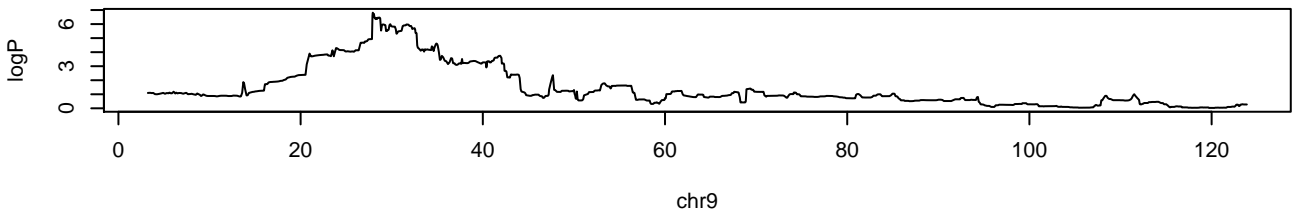
APC.SB3.total chr4 126490042 5.62 0.01



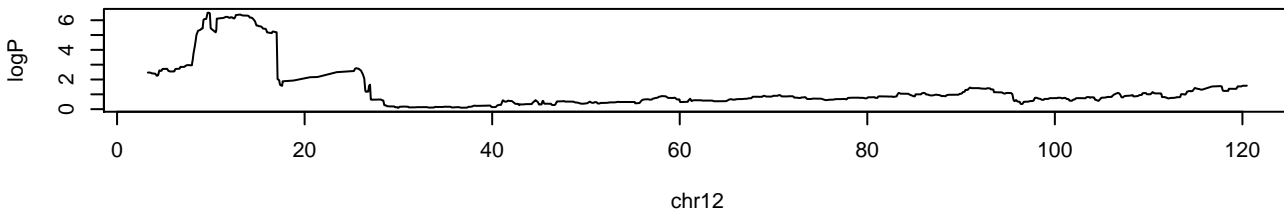
APC.SB3.total chr5 118020293 5.8 0.006



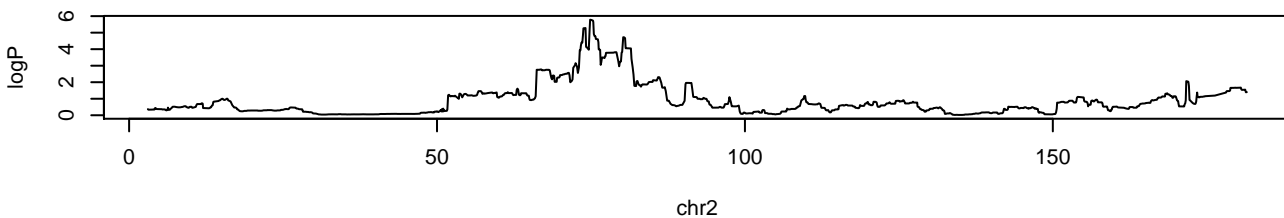
APC.SB3.total chr9 27909239 6.81 0.002



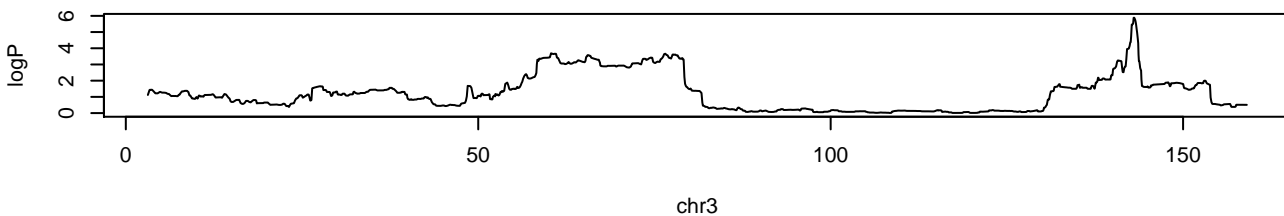
APC.SB3.total chr12 9717143 6.51 0.002



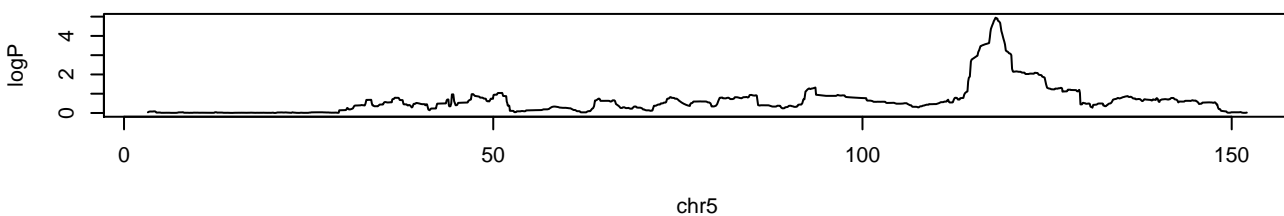
APC.Total chr2 74818178 5.78 0.018



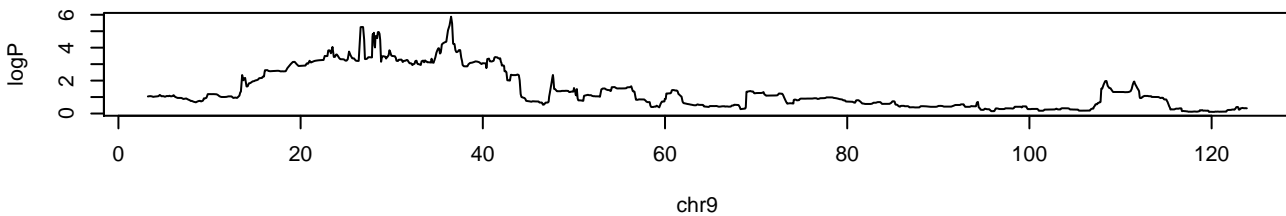
APC.Total chr3 143038166 5.88 0.016



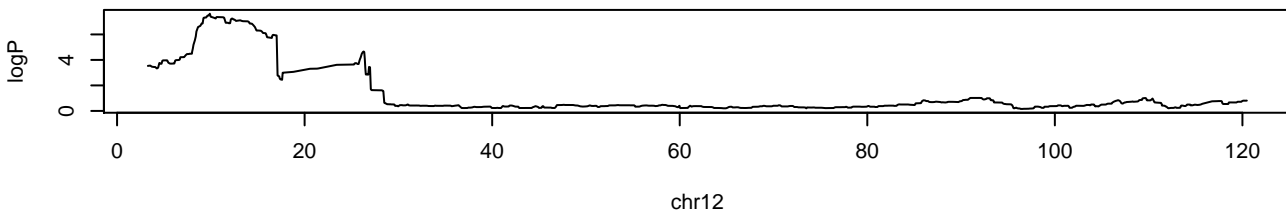
APC.Total chr5 118020293 4.94 0.046



APC.Total chr9 36445205 5.88 0.016



APC.Total chr12 9855317 7.62 0



APC.Total chr17 18493265 4.54 0.096

