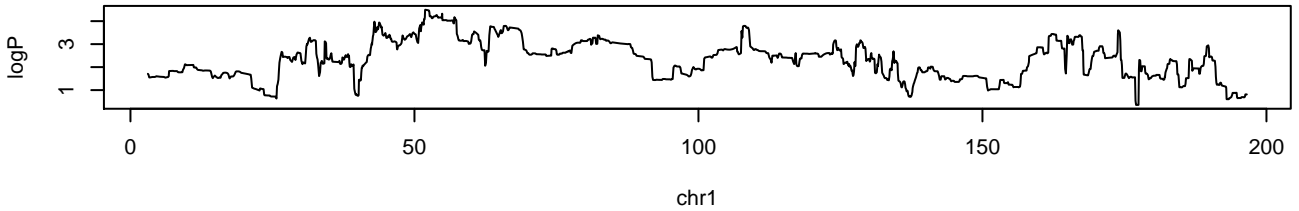
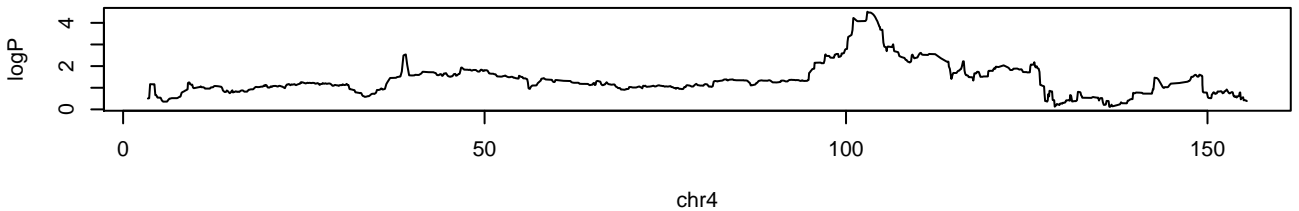


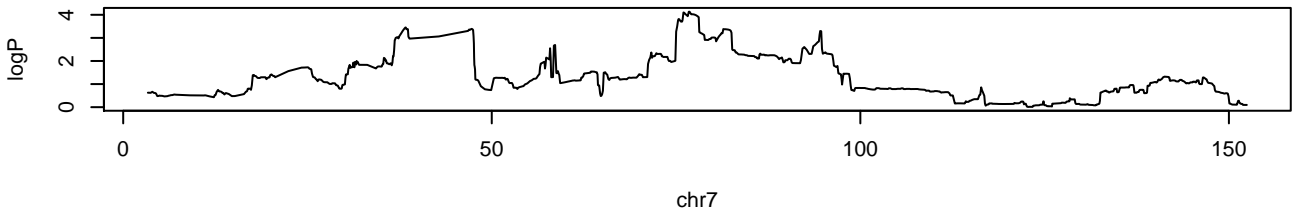
APC.Colon.1.2 chr1 51905070 4.5 0.026



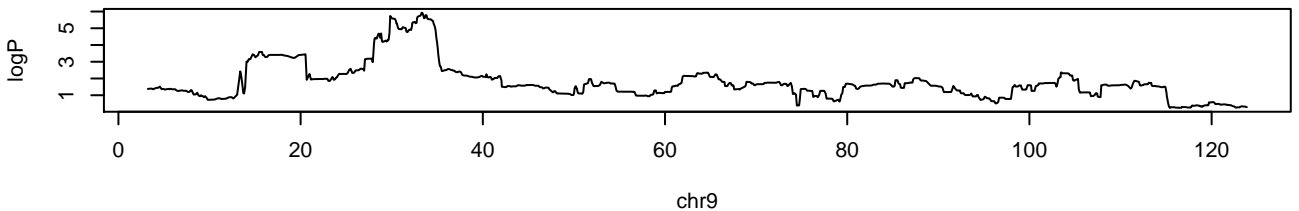
APC.Colon.1.2 chr4 102881474 4.51 0.024



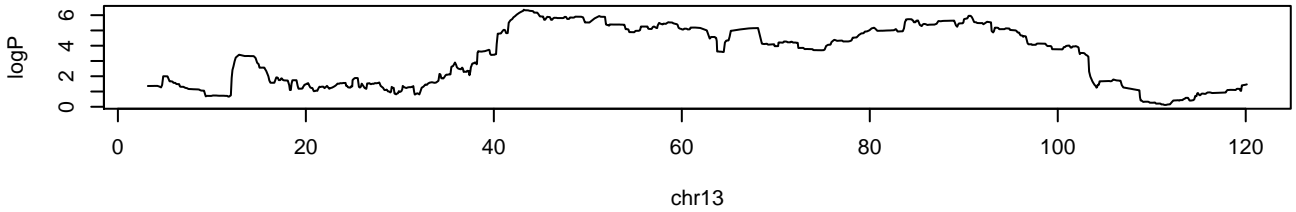
APC.Colon.1.2 chr7 76699369 4.13 0.056



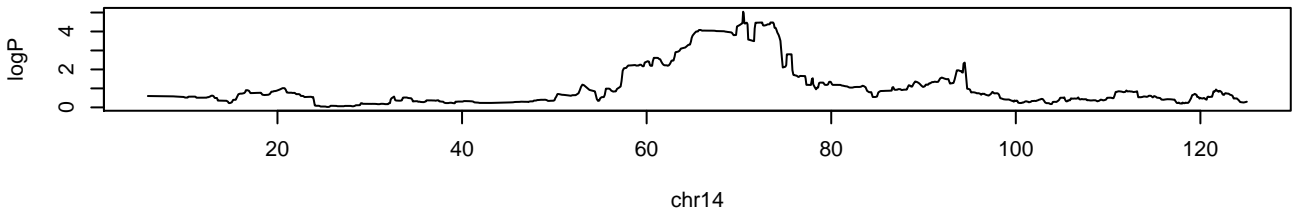
APC.Colon.1.2 chr9 33242295 5.93 0.004



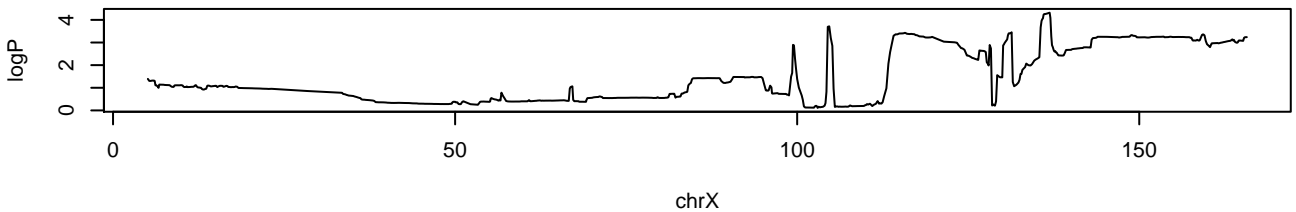
APC.Colon.1.2 chr13 43156691 6.36 0.002



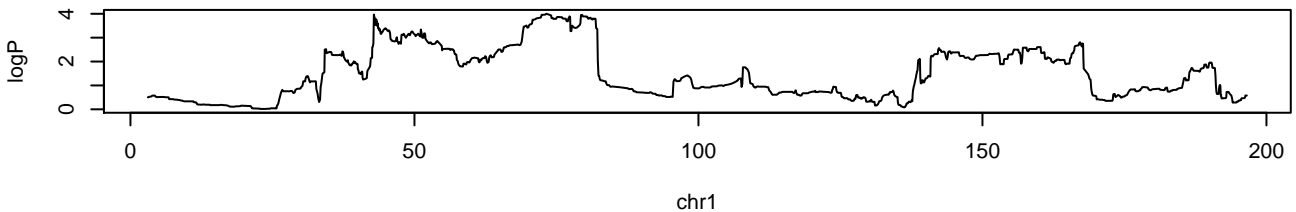
APC.Colon.1.2 chr14 70419866 5.04 0.012



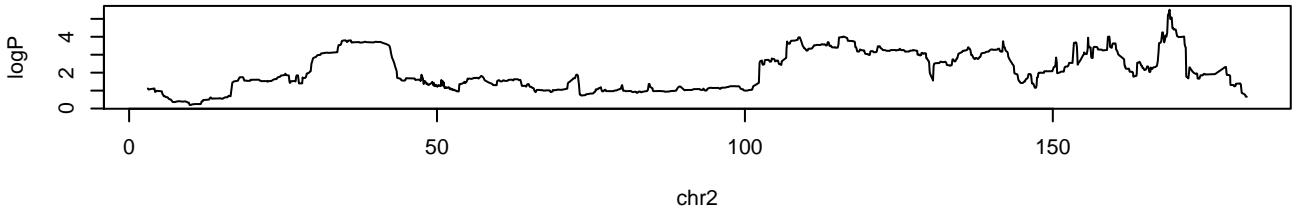
APC.Colon.1.2 chrX 136848441 4.32 0.042



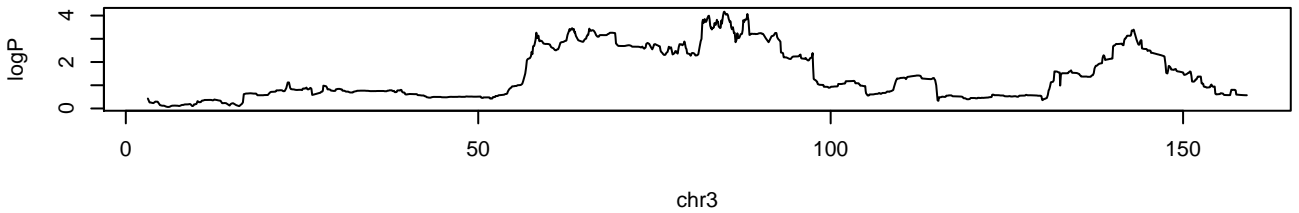
APC.Colon.1 chr1 73164961 4 0.064



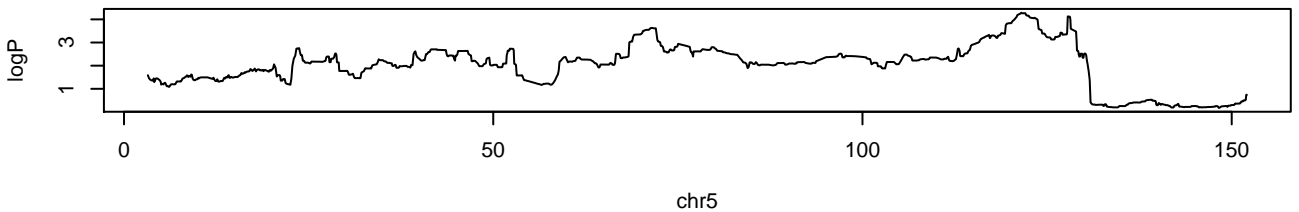
APC.Colon.1 chr2 168913685 5.51 0



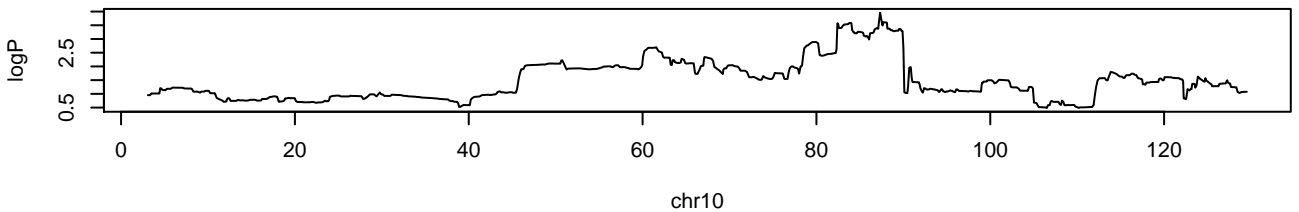
APC.Colon.1 chr3 84882626 4.17 0.042



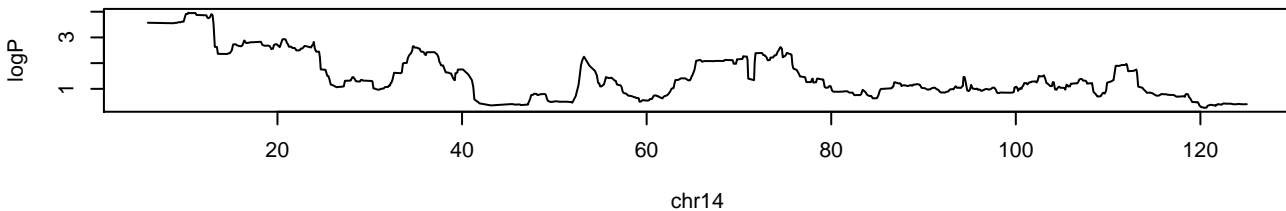
APC.Colon.1 chr5 121474834 4.29 0.028



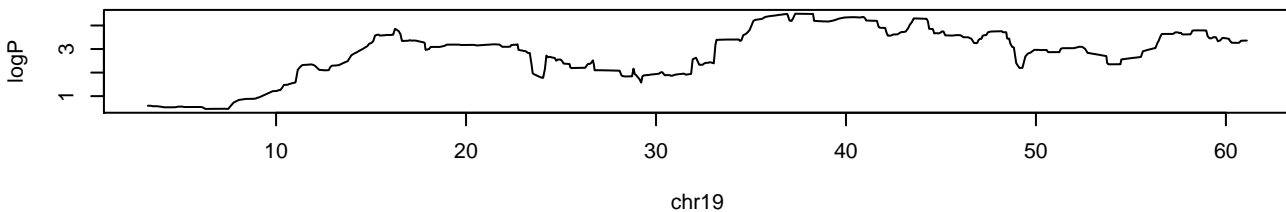
APC.Colon.1 chr10 87275529 3.96 0.078



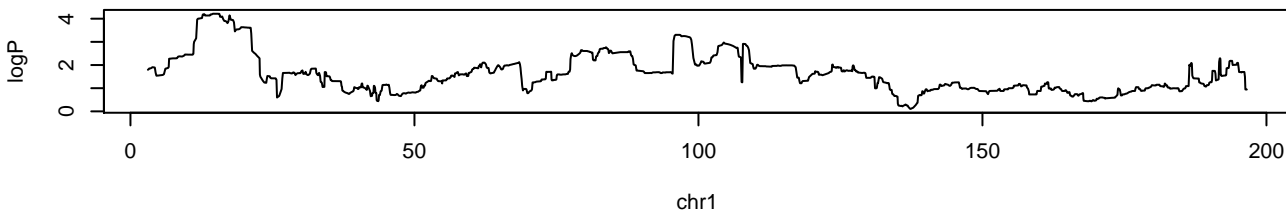
APC.Colon.1 chr14 10296603 3.96 0.076



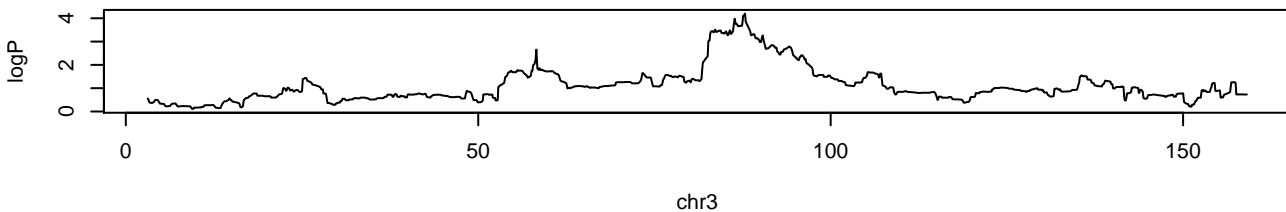
APC.Colon.1 chr19 37294115 4.5 0.016



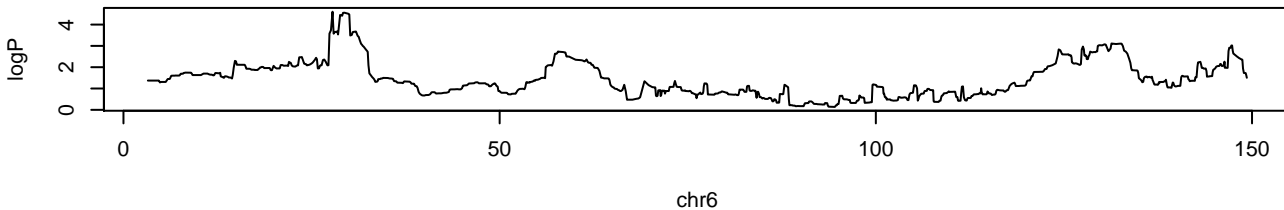
APC.Colon.2.3 chr1 14649969 4.22 0.04



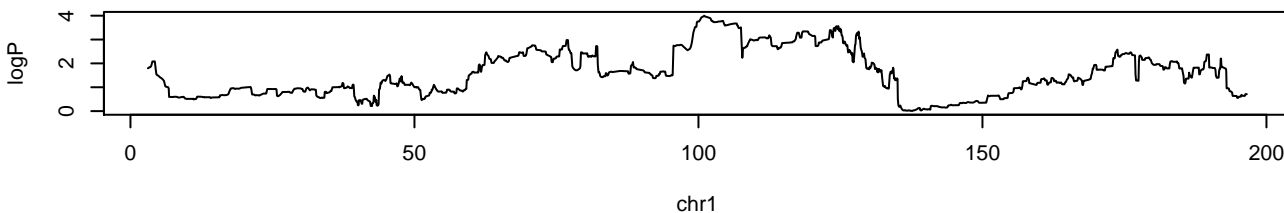
APC.Colon.2.3 chr3 87802124 4.19 0.042



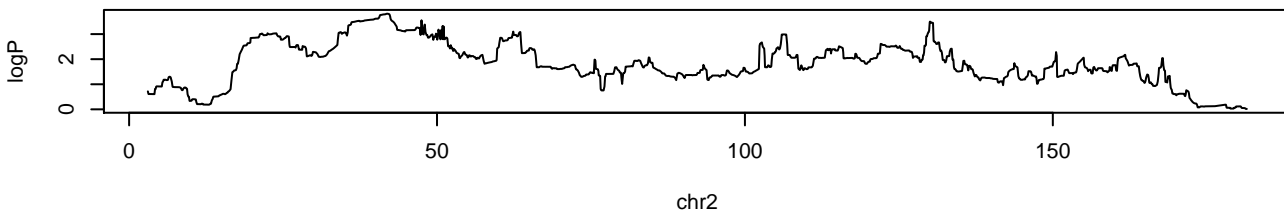
APC.Colon.2.3 chr6 27728224 4.6 0.014



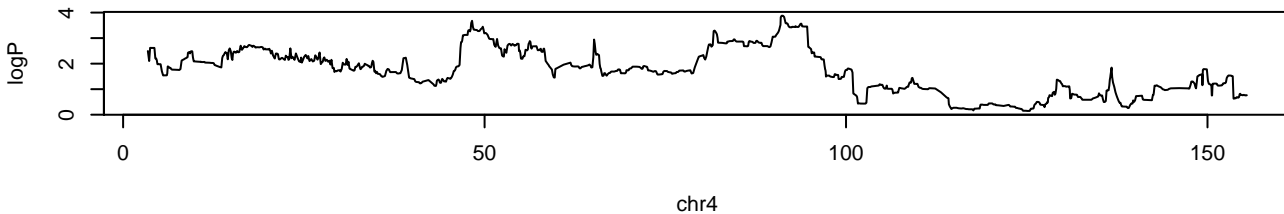
APC.Colon.3 chr1 100929709 4 0.068



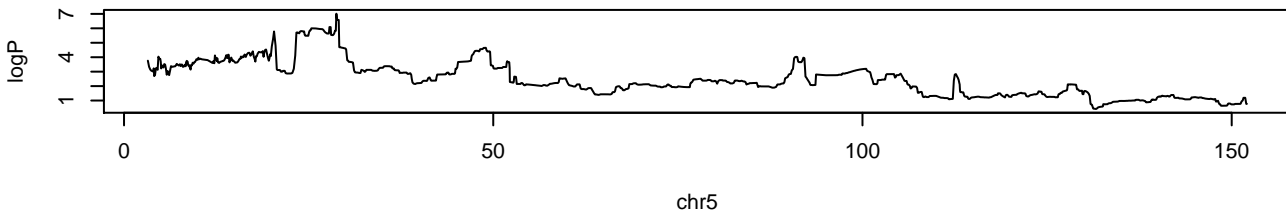
APC.Colon.3 chr2 41825549 3.81 0.082



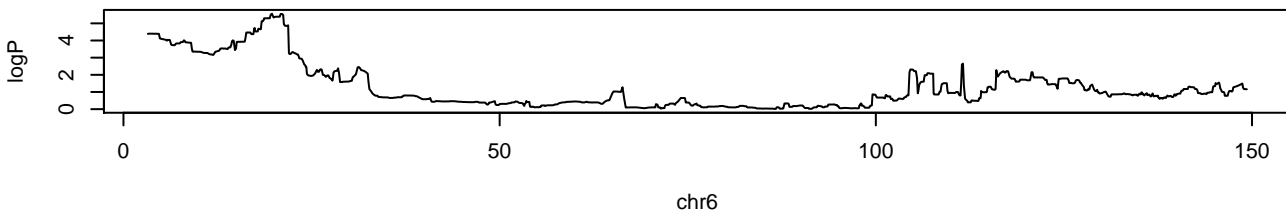
APC.Colon.3 chr4 91069069 3.88 0.08



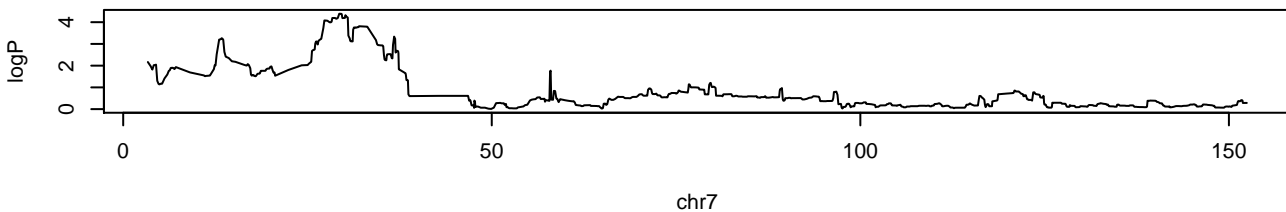
APC.Colon.3 chr5 28710628 7.01 0



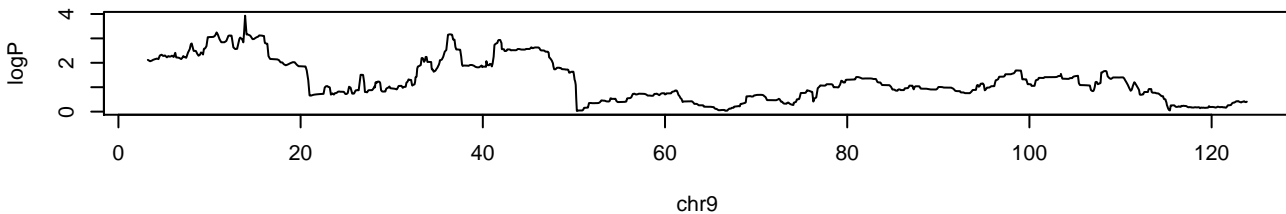
APC.Colon.3 chr6 19663665 5.56 0.006



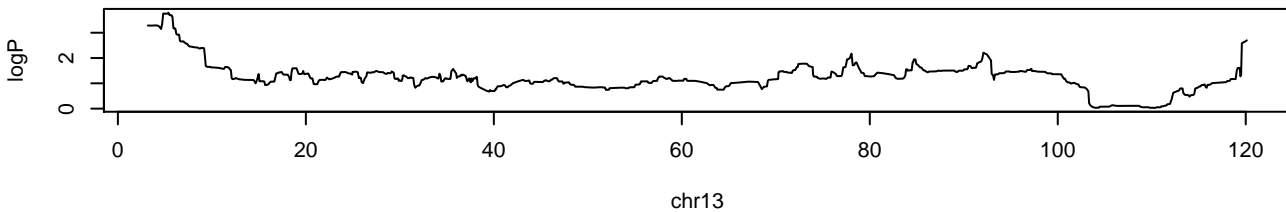
APC.Colon.3 chr7 29250577 4.39 0.03



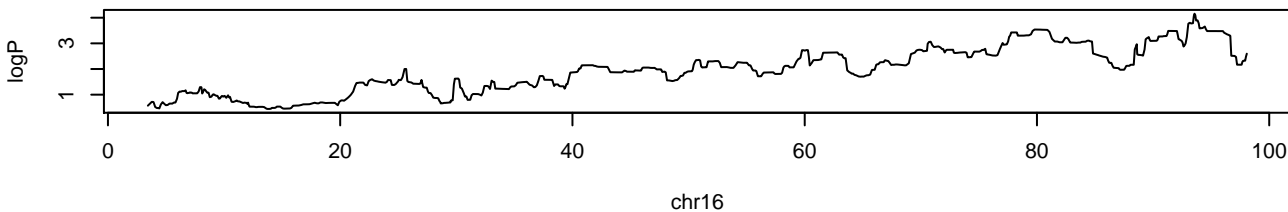
APC.Colon.3 chr9 13834311 3.93 0.074



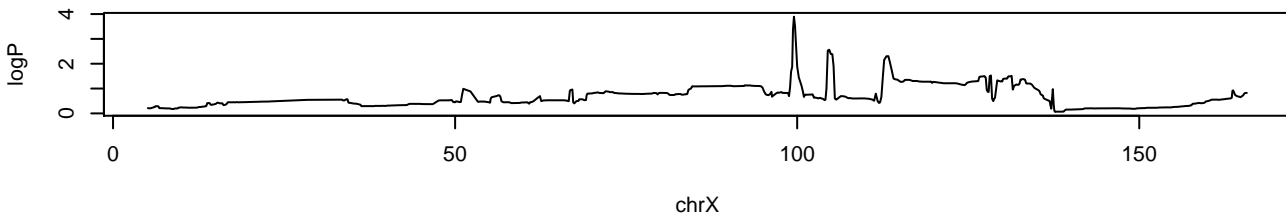
APC.Colon.3 chr13 5337523 3.79 0.082



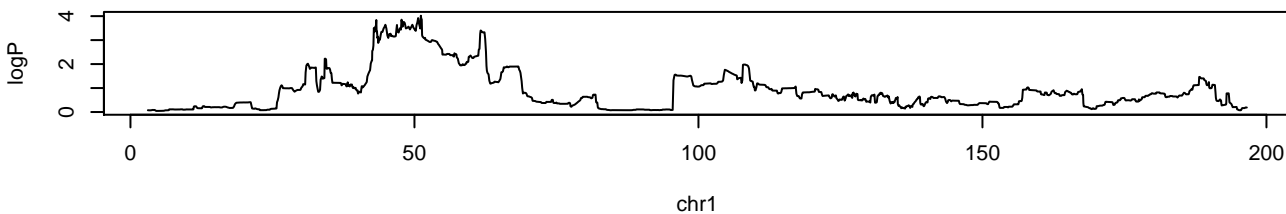
APC.Colon.3 chr16 93539285 4.16 0.048



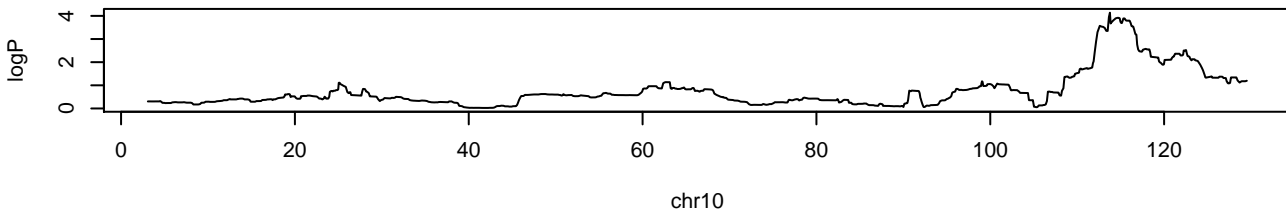
APC.Colon.3 chrX 99445013 3.89 0.08



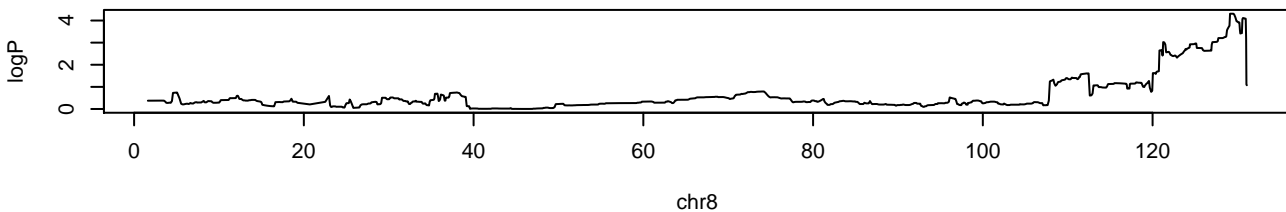
APC.Colon.total chr1 51101096 4.02 0.07



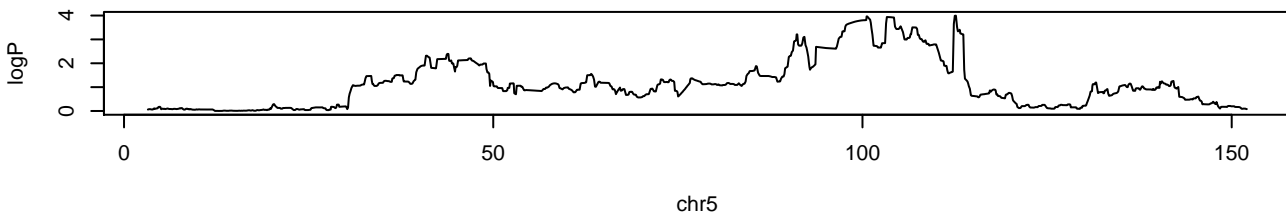
APC.Colon.total chr10 113711100 4.14 0.056



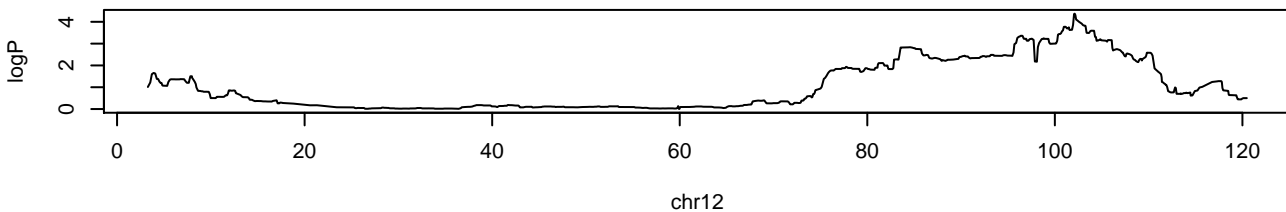
APC.SB1.1.2 chr8 129185983 4.31 0.036



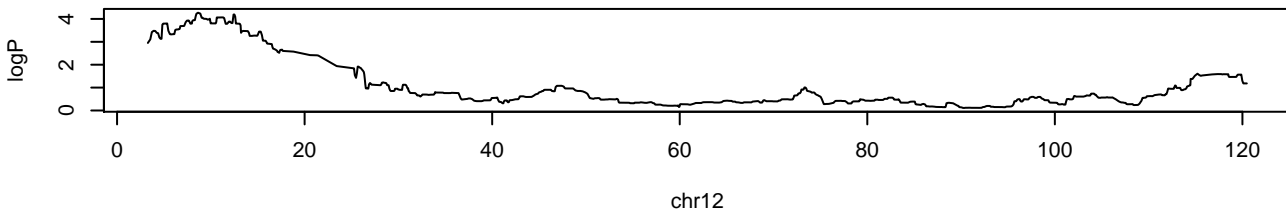
APC.SB1.2.3 chr5 112566020 3.99 0.072



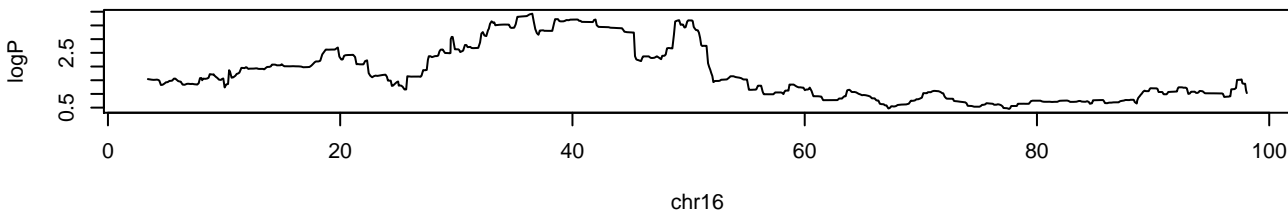
APC.SB1.2.3 chr12 102090550 4.37 0.026



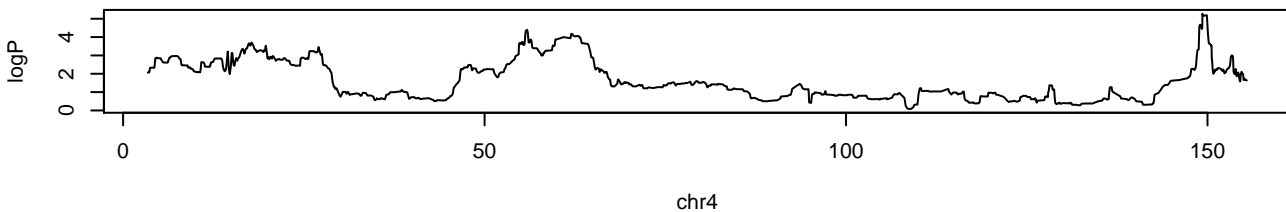
APC.SB1.3 chr12 8499469 4.27 0.04



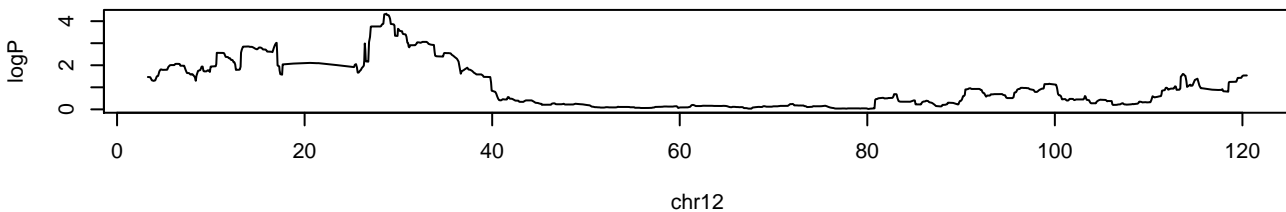
APC.SB1.total chr16 36481756 3.93 0.094



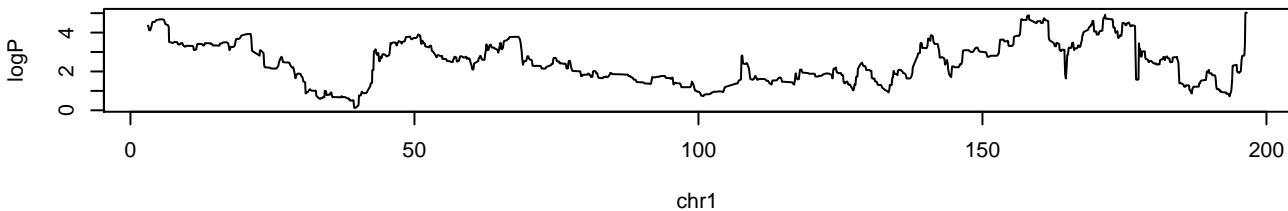
APC.SB2.1.2 chr4 149304652 5.27 0



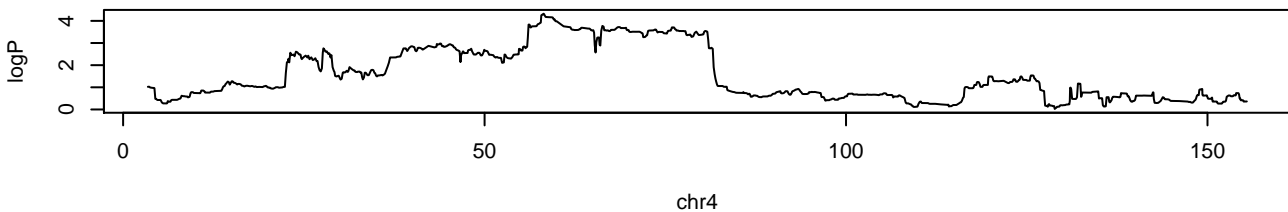
APC.SB2.1 chr12 28679303 4.34 0.042



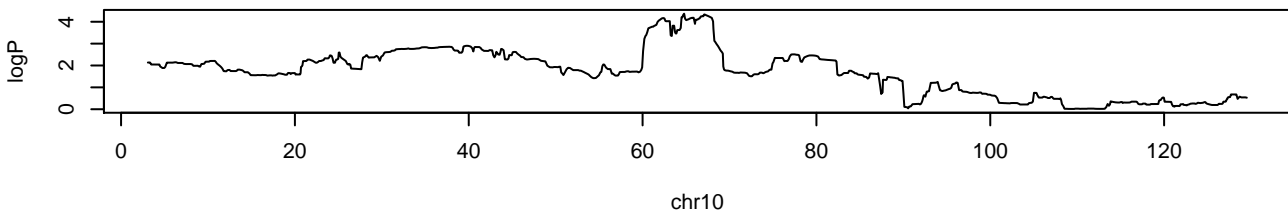
APC.SB2.2.3 chr1 196484881 5.02 0.004



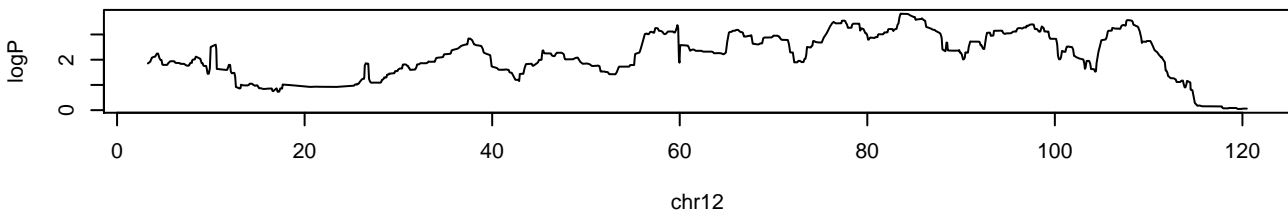
APC.SB2.2.3 chr4 58120705 4.32 0.022



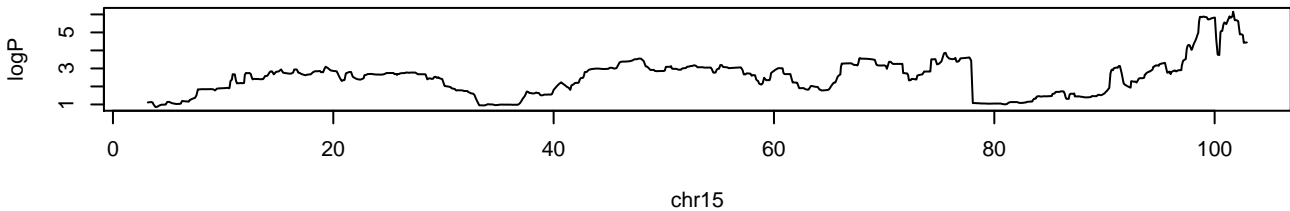
APC.SB2.2.3 chr10 64721813 4.37 0.018



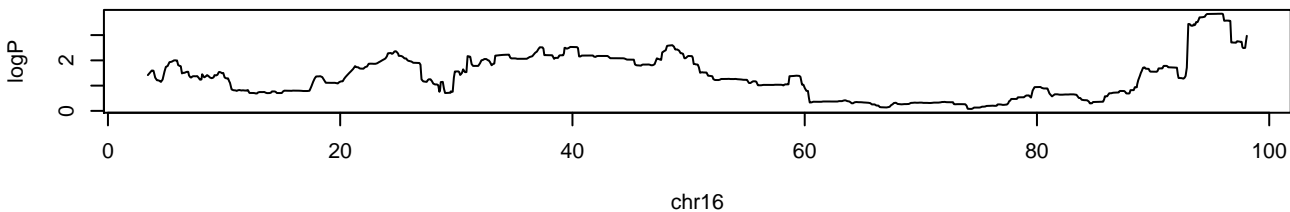
APC.SB2.2.3 chr12 83467637 3.82 0.09



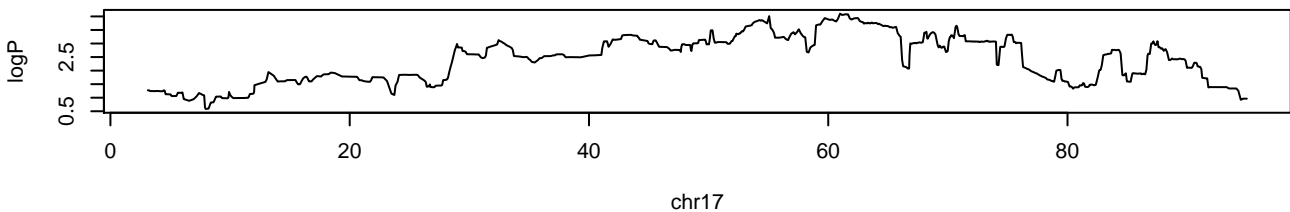
APC.SB2.2.3 chr15 101656218 6.15 0



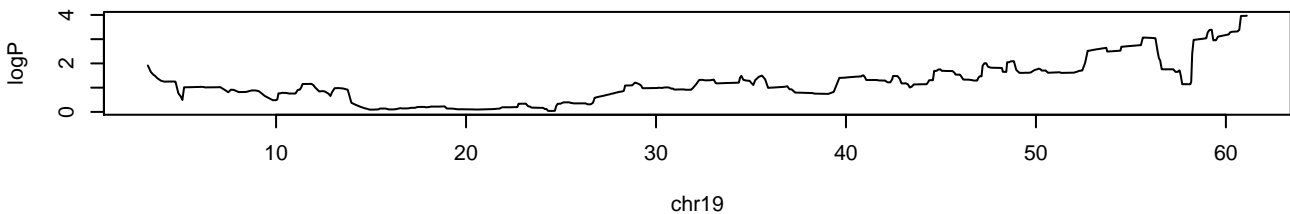
APC.SB2.2.3 chr16 95905711 3.85 0.09



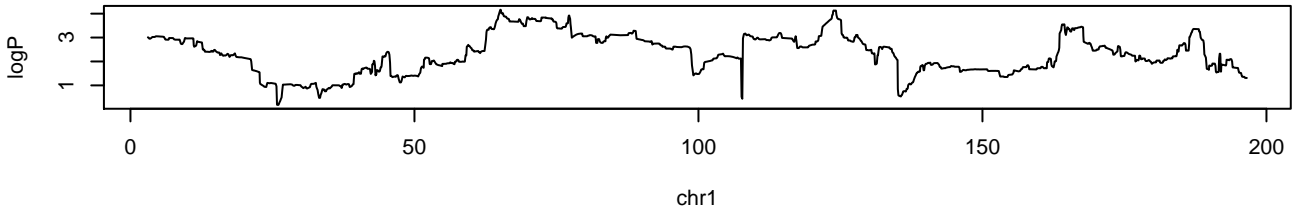
APC.SB2.2.3 chr17 60903439 4.1 0.044



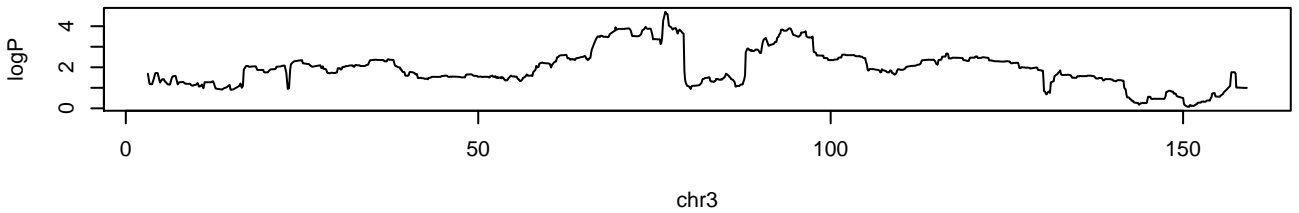
APC.SB2.2.3 chr19 61077203 3.97 0.064



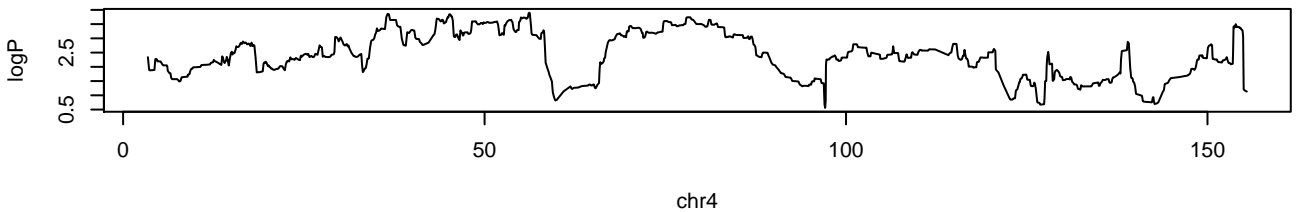
APC.SB2.3 chr1 65060495 4.16 0.048



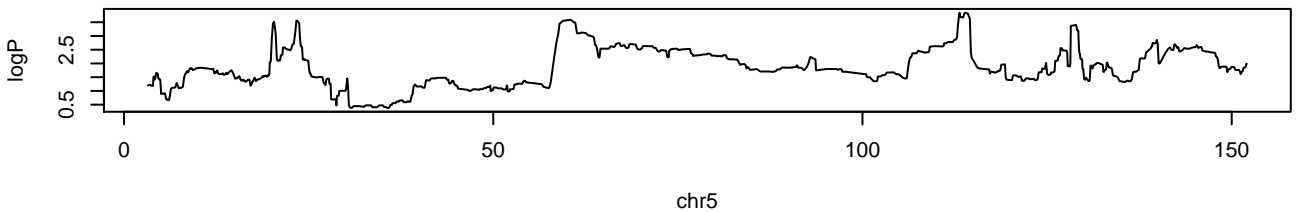
APC.SB2.3 chr3 76449623 4.71 0.014



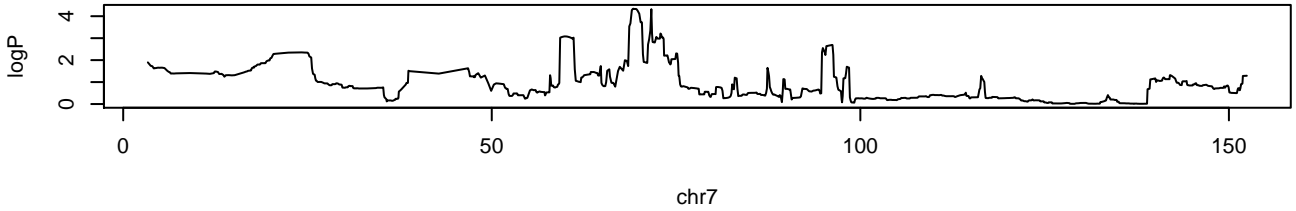
APC.SB2.3 chr4 56140844 3.9 0.088



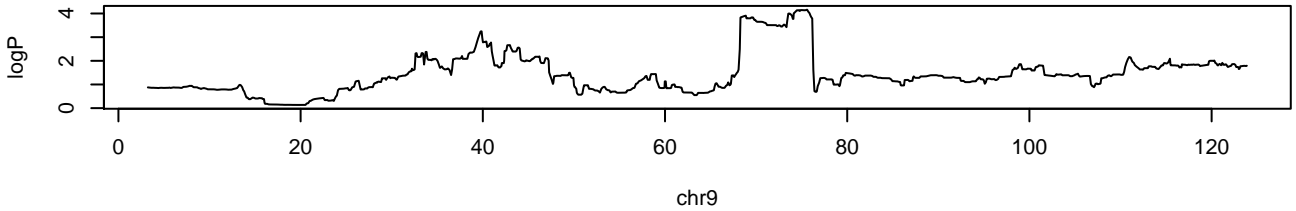
APC.SB2.3 chr5 113830724 3.85 0.092



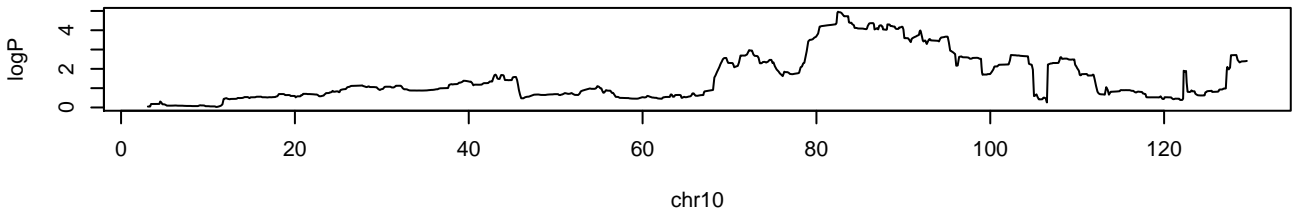
APC.SB2.3 chr7 69097802 4.34 0.036



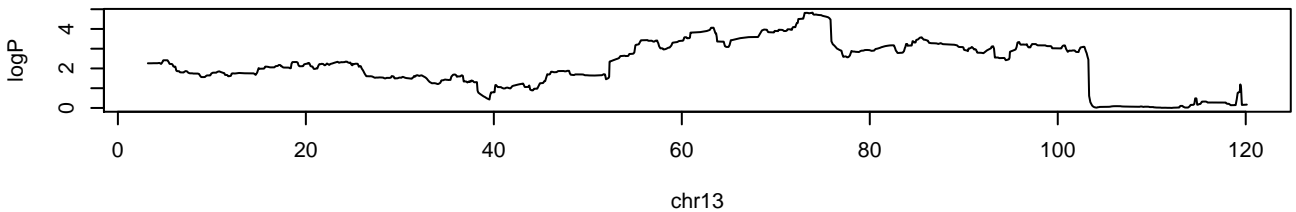
APC.SB2.3 chr9 75547006 4.16 0.048



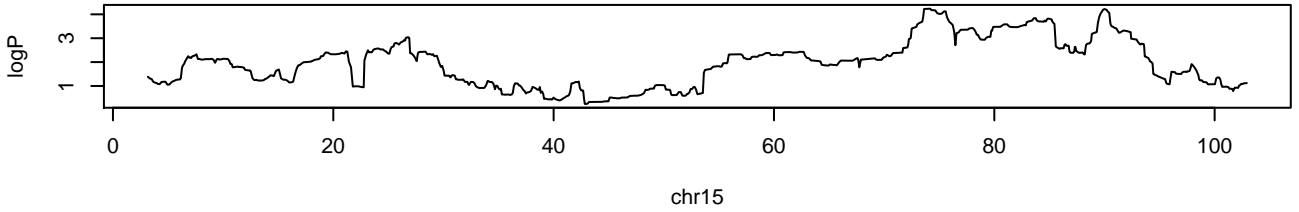
APC.SB2.3 chr10 82460141 4.96 0.01



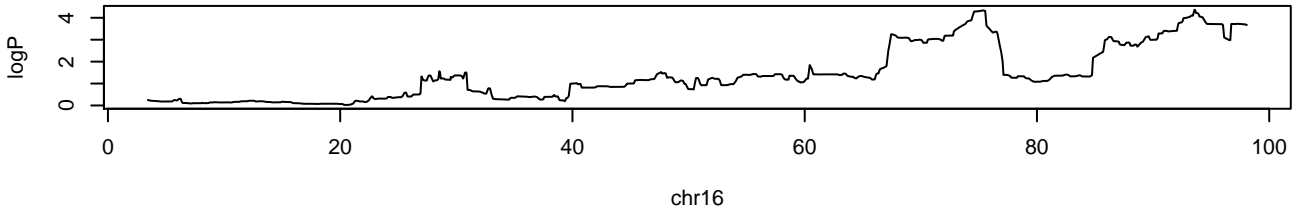
APC.SB2.3 chr13 73912036 4.82 0.012



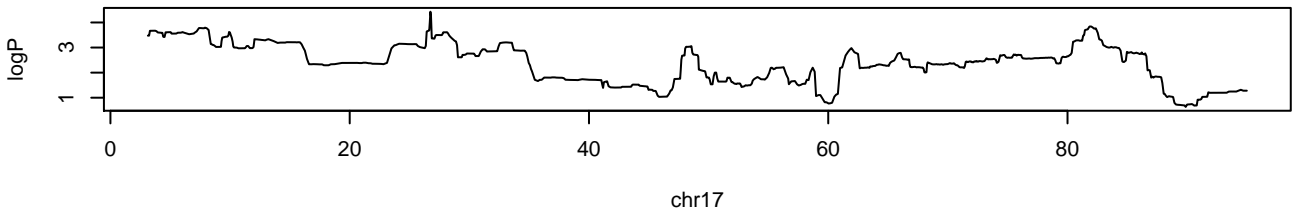
APC.SB2.3 chr15 74160654 4.24 0.042



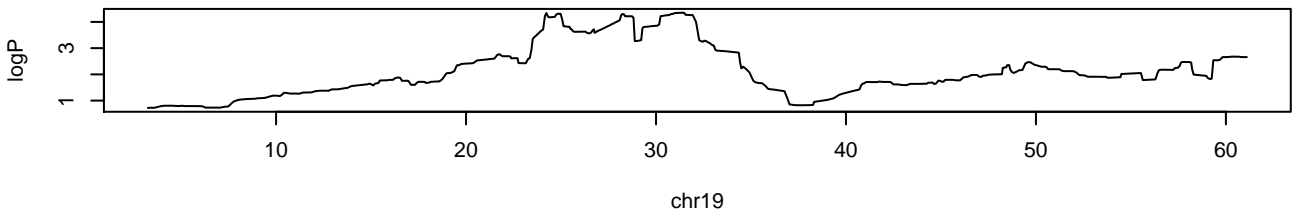
APC.SB2.3 chr16 93539285 4.37 0.036



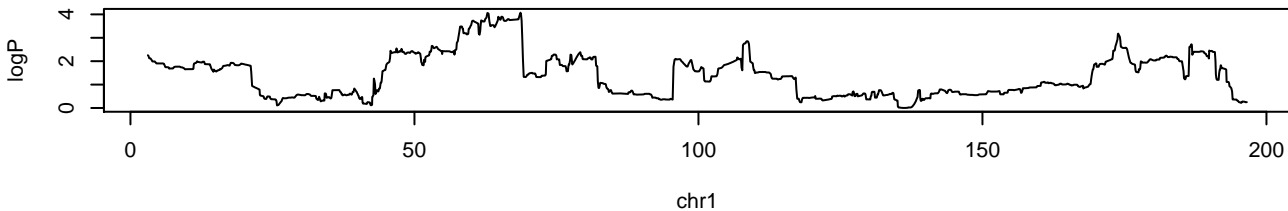
APC.SB2.3 chr17 26721426 4.43 0.03



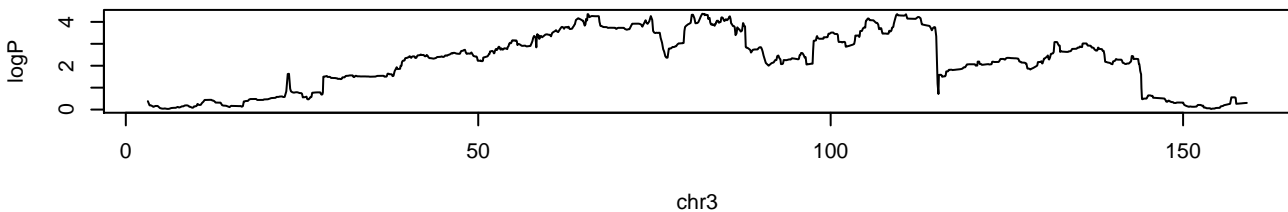
APC.SB2.3 chr19 31354267 4.35 0.036



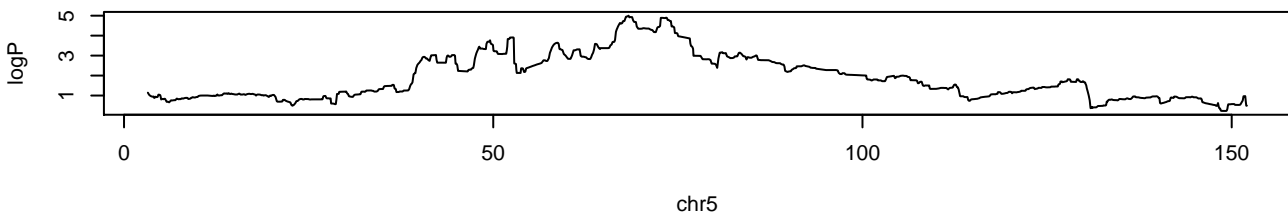
APC.SB3.1.2 chr1 68638494 4.07 0.068



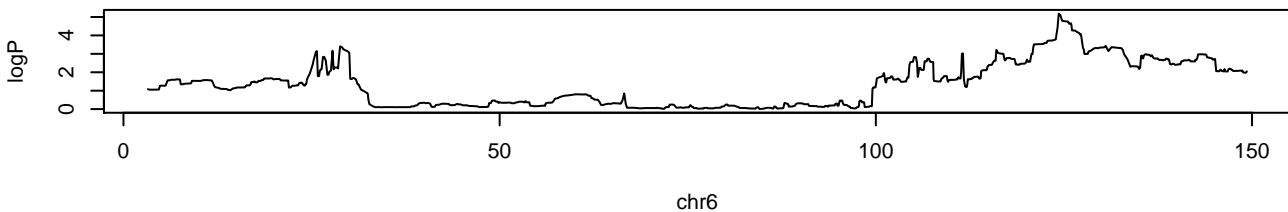
APC.SB3.1.2 chr3 81749631 4.37 0.038



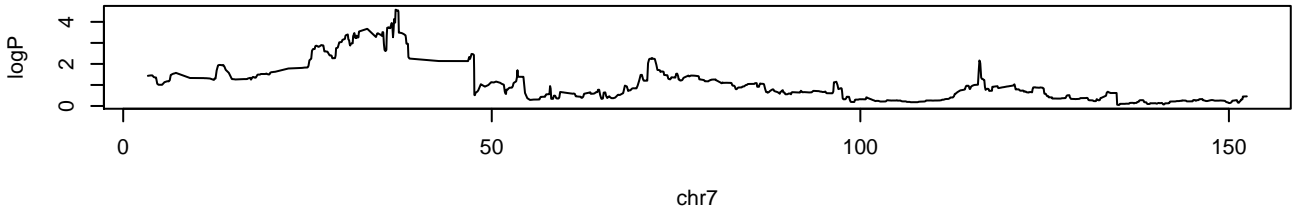
APC.SB3.1.2 chr5 68289356 5 0.014



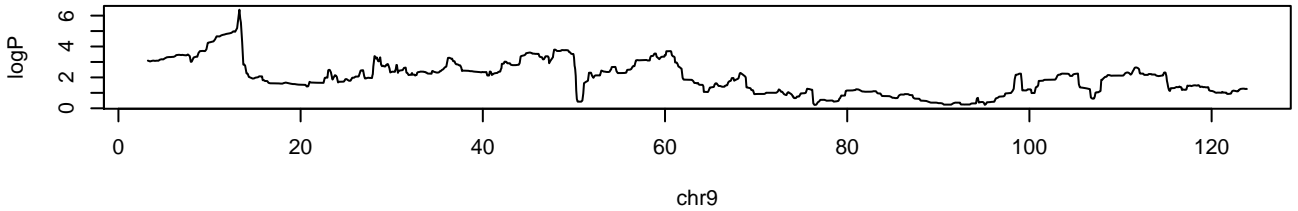
APC.SB3.1.2 chr6 124226223 5.18 0.008



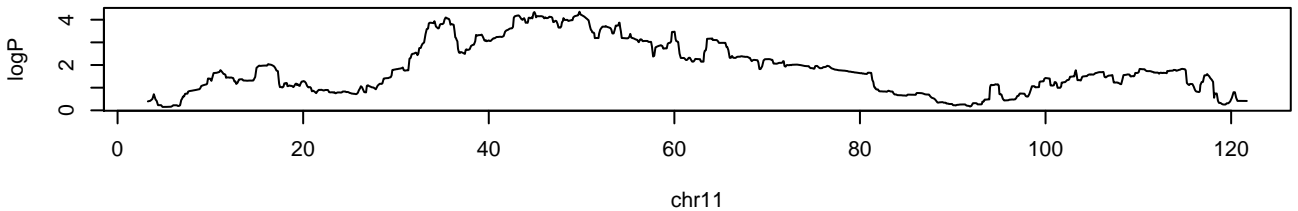
APC.SB3.1.2 chr7 36916825 4.58 0.02



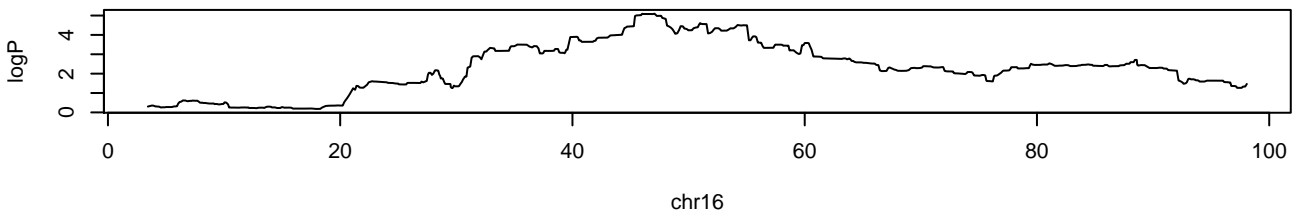
APC.SB3.1.2 chr9 13229563 6.38 0



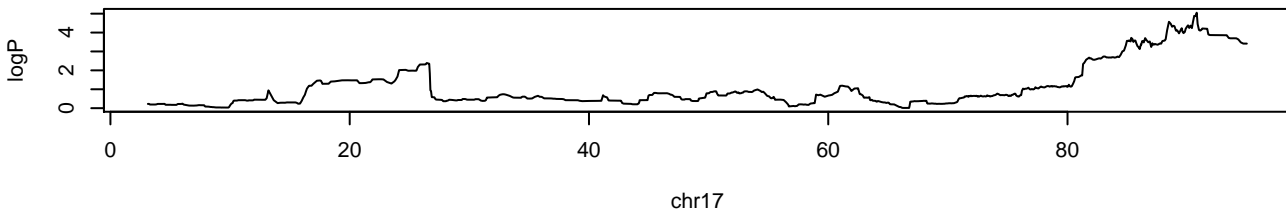
APC.SB3.1.2 chr11 49752661 4.35 0.038



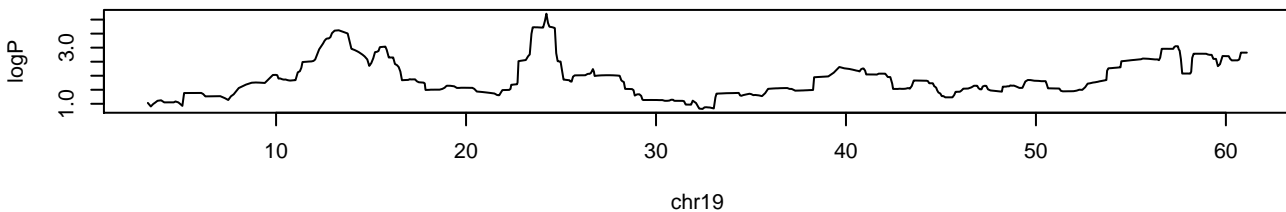
APC.SB3.1.2 chr16 46974518 5.09 0.012



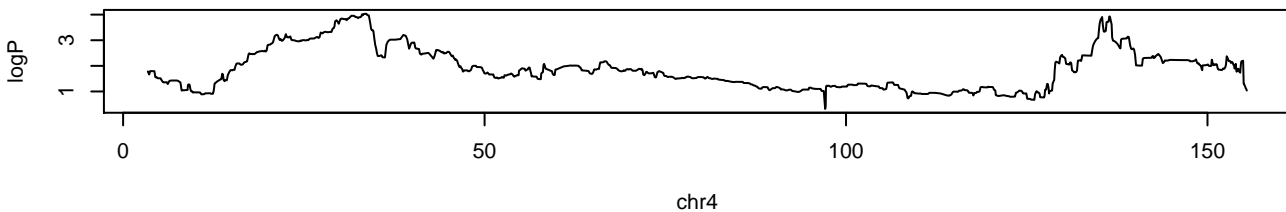
APC.SB3.1.2 chr17 90777602 5.05 0.012



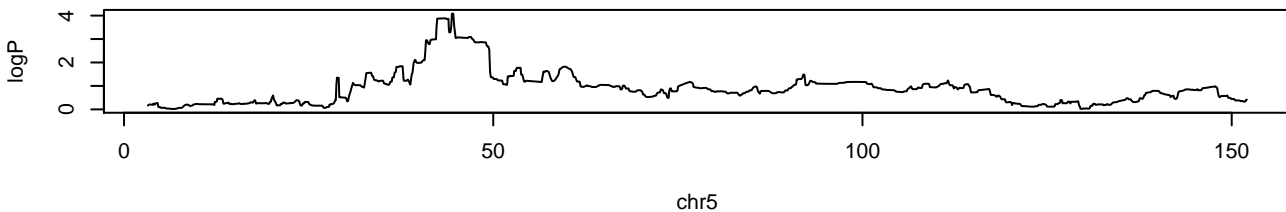
APC.SB3.1.2 chr19 24190877 4.21 0.048



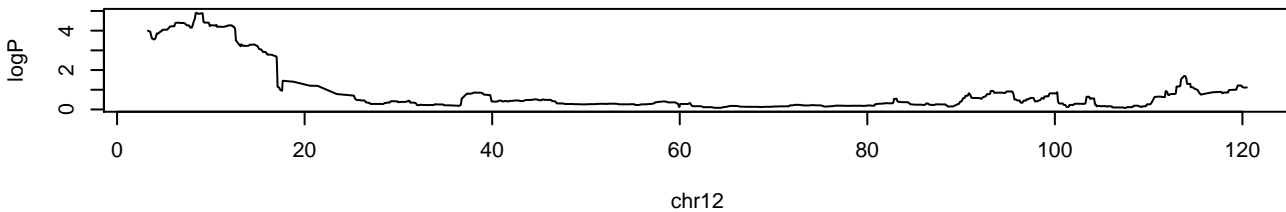
APC.SB3.2.3 chr4 33507274 4.03 0.072



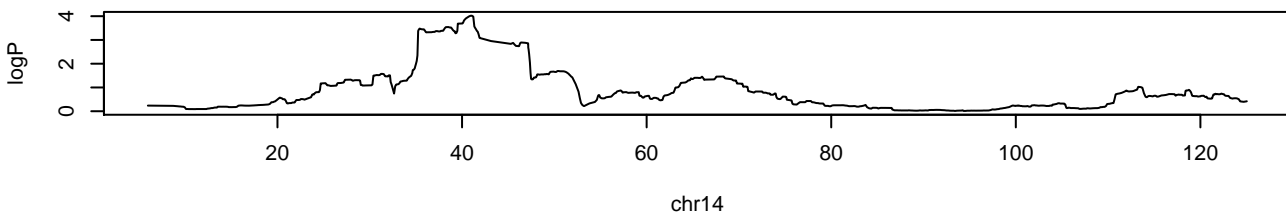
APC.SB3.2.3 chr5 44371448 4.08 0.068



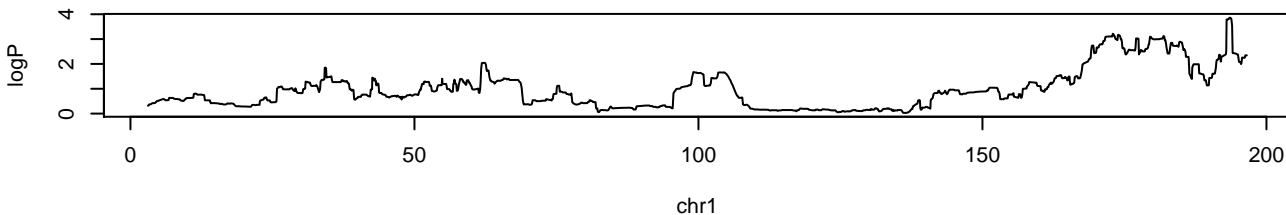
APC.SB3.2.3 chr12 8432194 4.91 0.018



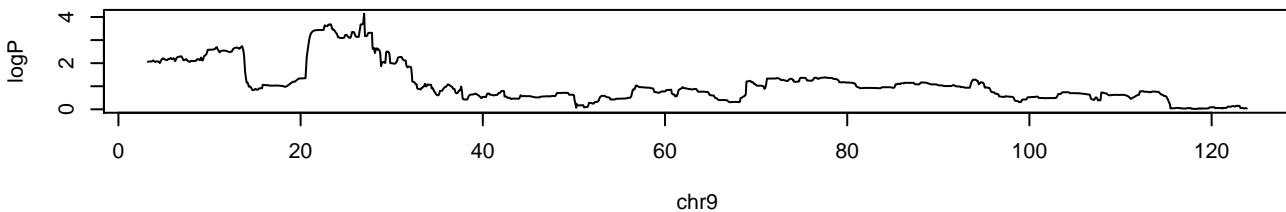
APC.SB3.3 chr14 41010568 4.02 0.062



APC.Total chr1 193518524 3.86 0.072



APC.Total chr9 26923187 4.14 0.038



APC.Total chr18 55001425 3.9 0.064

