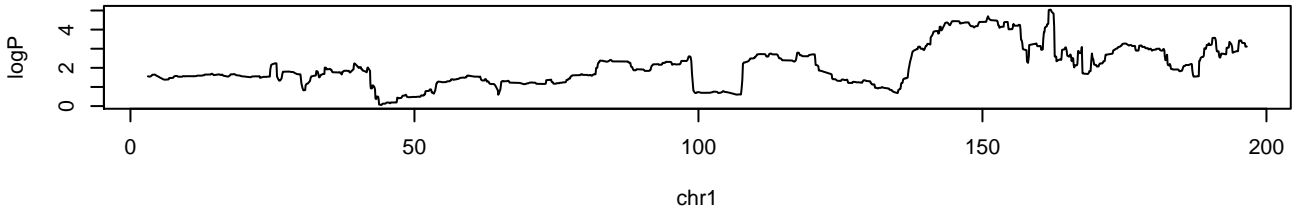
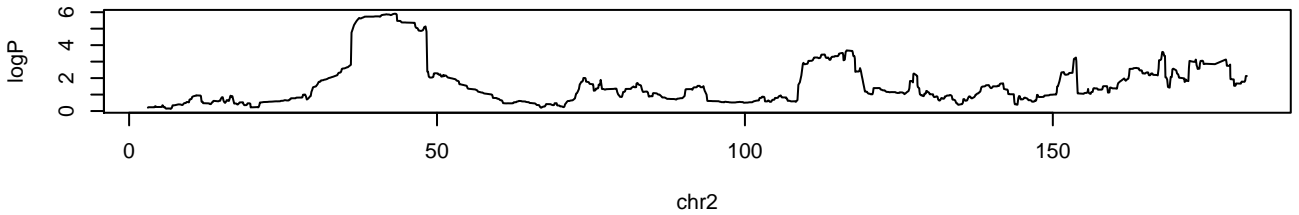


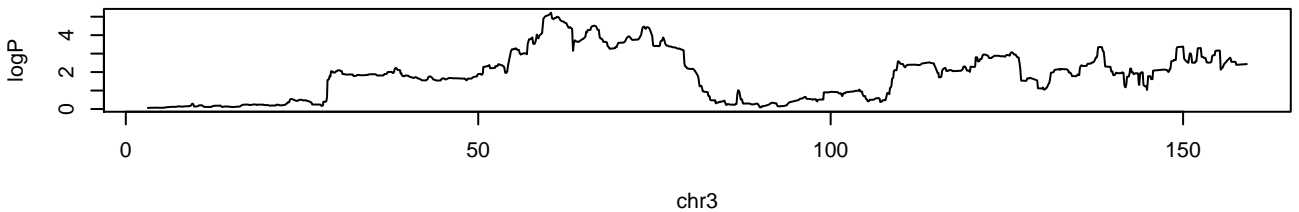
APC.Colon.1.2 chr1 161953092 5.04 0.008



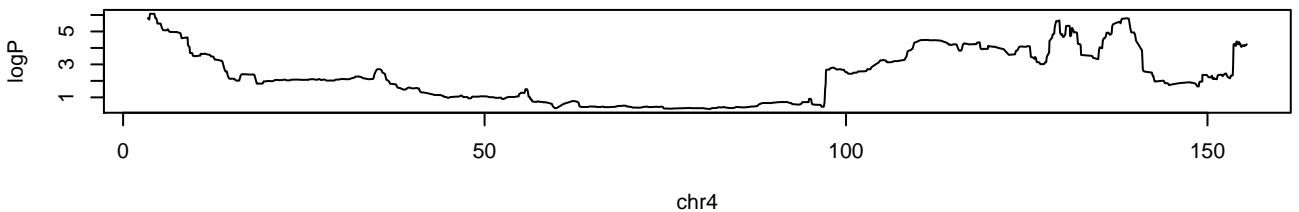
APC.Colon.1.2 chr2 43132137 5.91 0.002



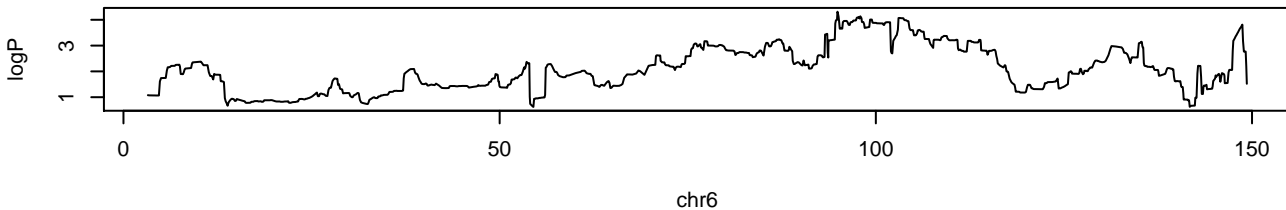
APC.Colon.1.2 chr3 60272236 5.22 0.004



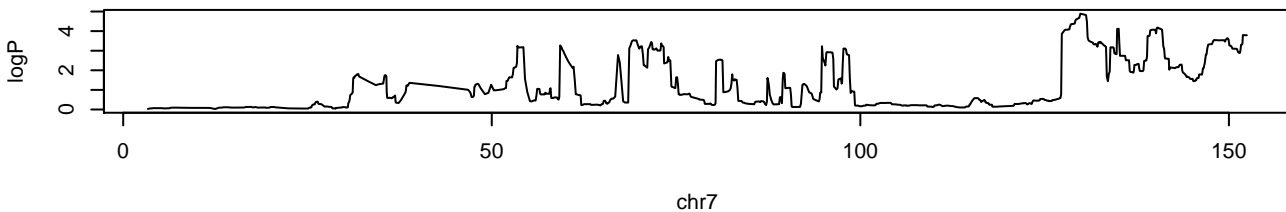
APC.Colon.1.2 chr4 3679243 6.08 0.002



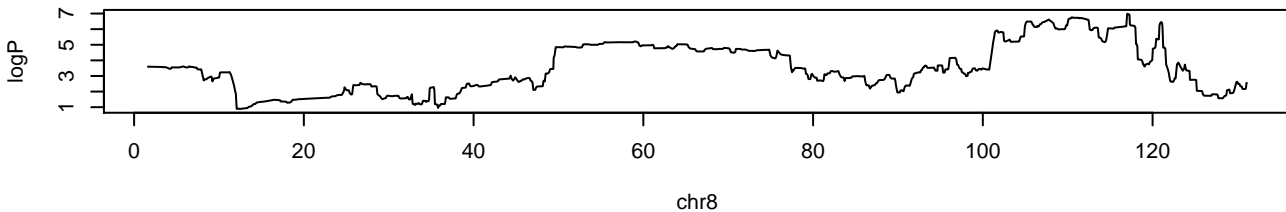
APC.Colon.1.2 chr6 94862710 4.31 0.042



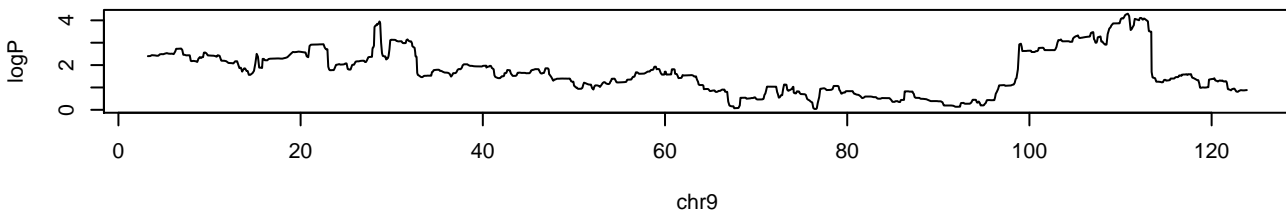
APC.Colon.1.2 chr7 129818934 4.89 0.014



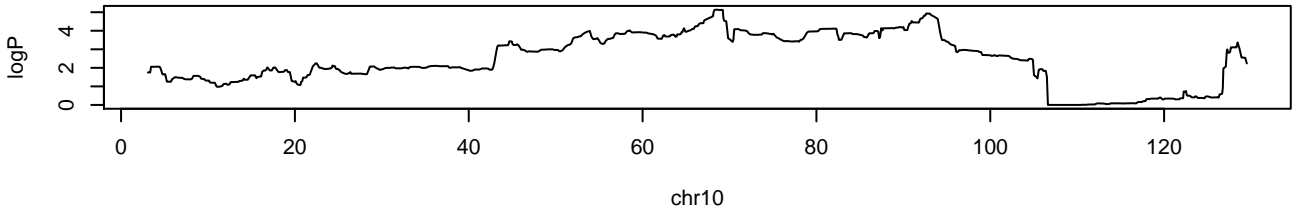
APC.Colon.1.2 chr8 116993487 6.99 0



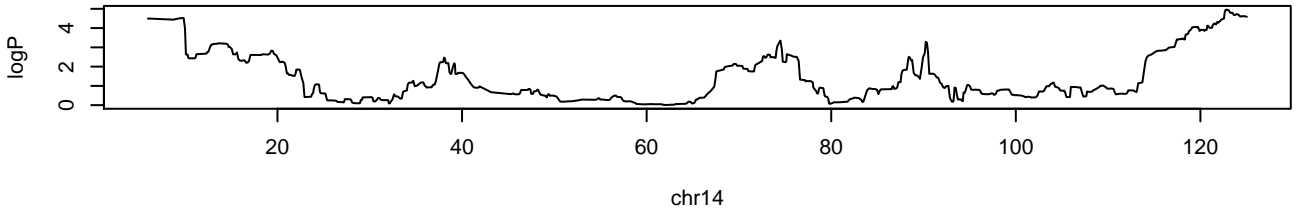
APC.Colon.1.2 chr9 110741532 4.3 0.042



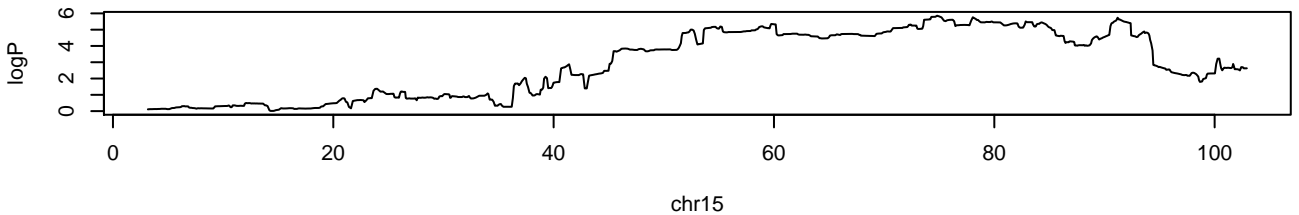
APC.Colon.1.2 chr10 68505677 5.13 0.006



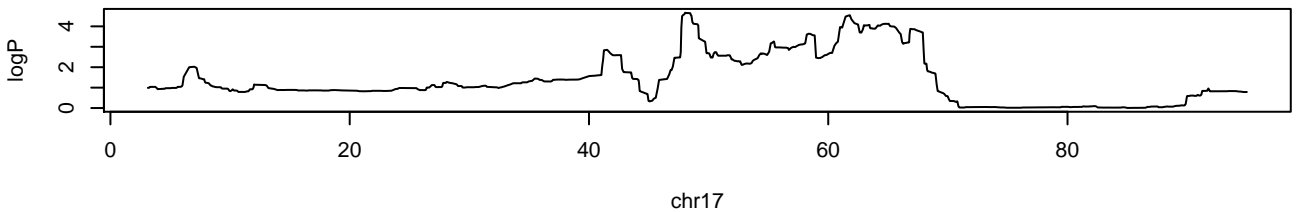
APC.Colon.1.2 chr14 122794365 4.95 0.012



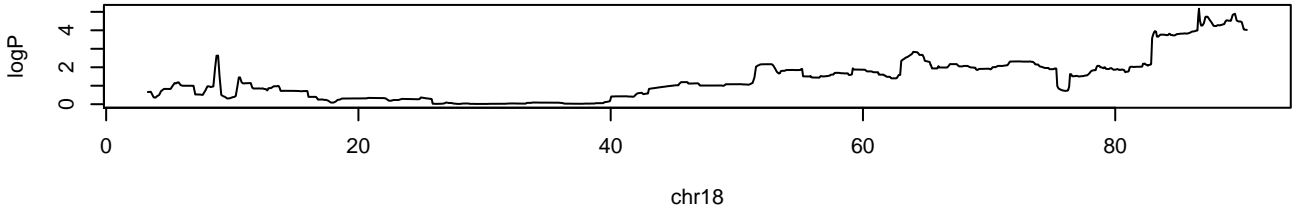
APC.Colon.1.2 chr15 74710207 5.86 0.002



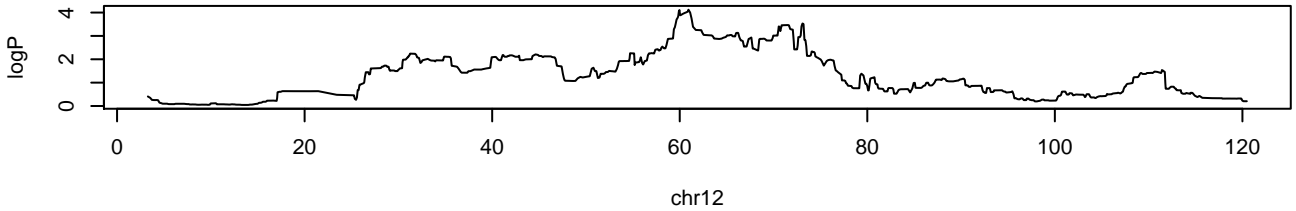
APC.Colon.1.2 chr17 48014774 4.67 0.02



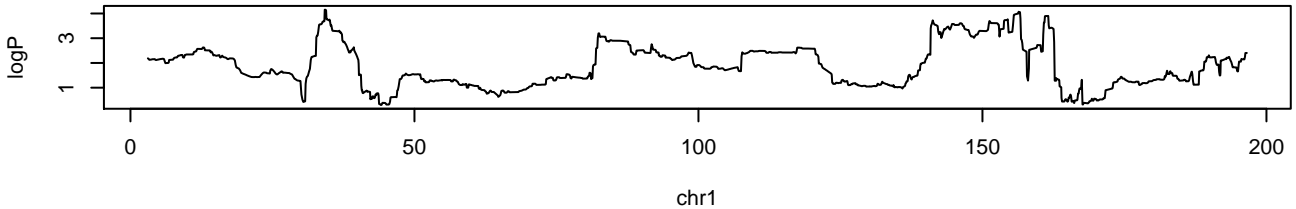
APC.Colon.1.2 chr18 86612662 5.17 0.006



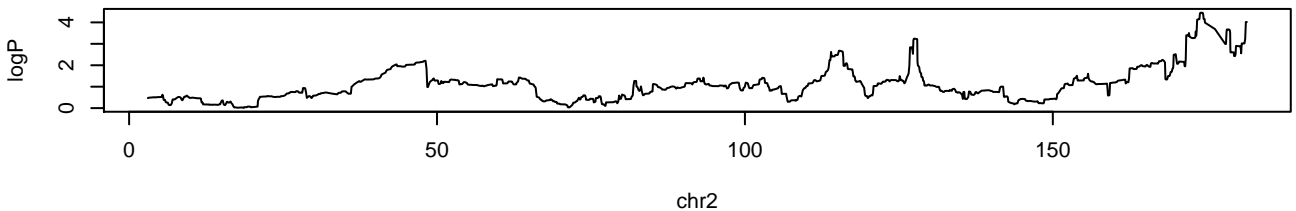
APC.Colon.1 chr12 60884831 4.12 0.084



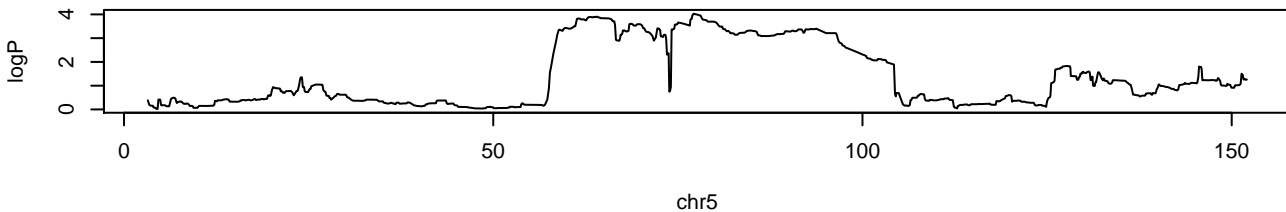
APC.Colon.total chr1 34175860 4.15 0.078



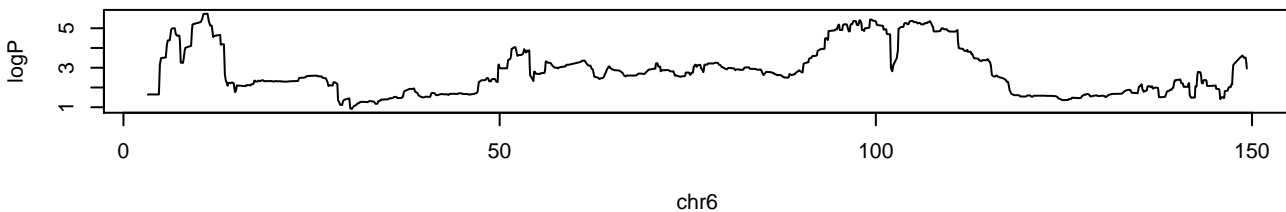
APC.Colon.total chr2 173950532 4.45 0.046



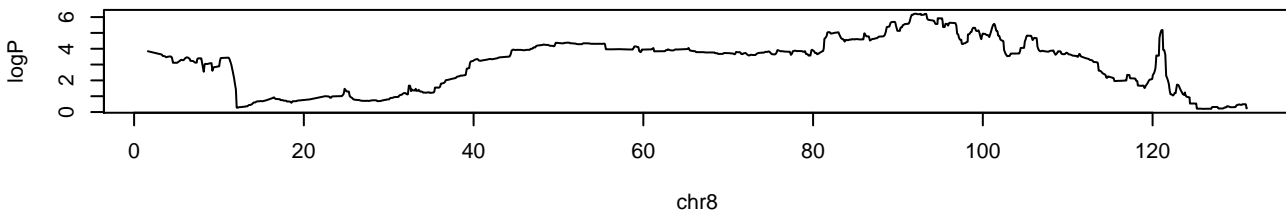
APC.Colon.total chr5 77106148 4.03 0.096



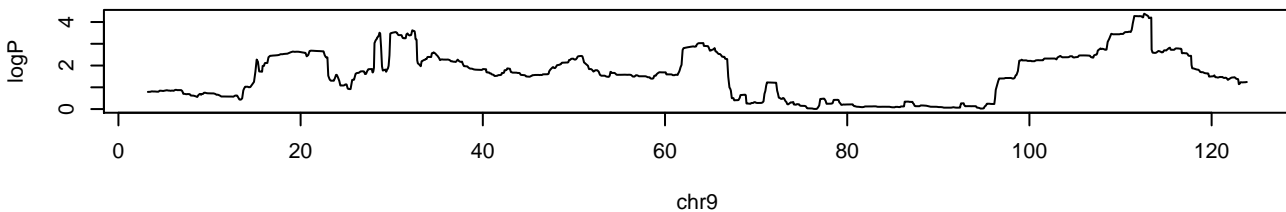
APC.Colon.total chr6 11098444 5.73 0.002



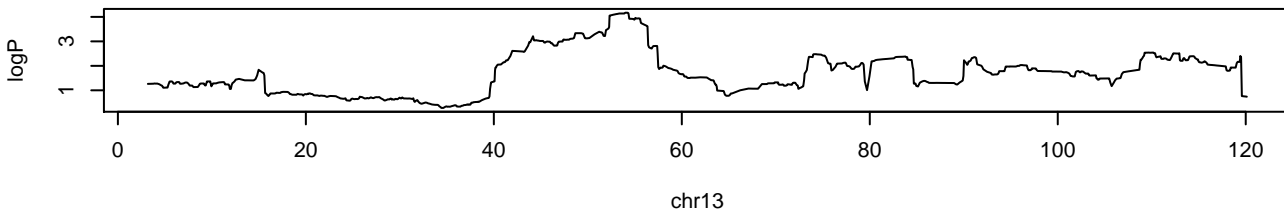
APC.Colon.total chr8 92653838 6.21 0



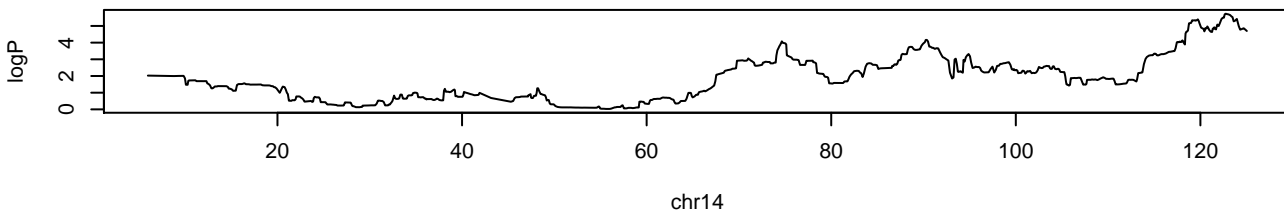
APC.Colon.total chr9 112563096 4.38 0.052



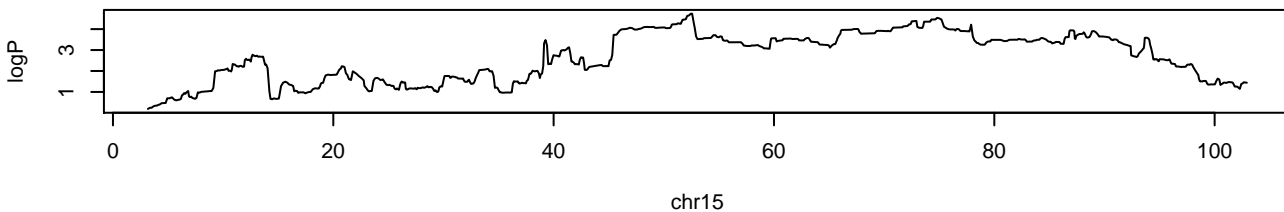
APC.Colon.total chr13 54001710 4.17 0.076



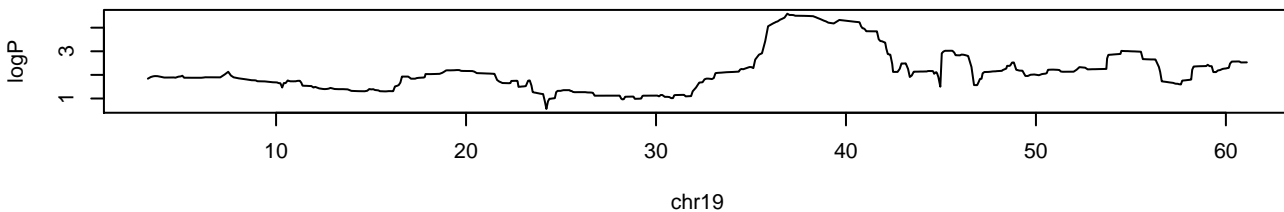
APC.Colon.total chr14 122667279 5.73 0.002



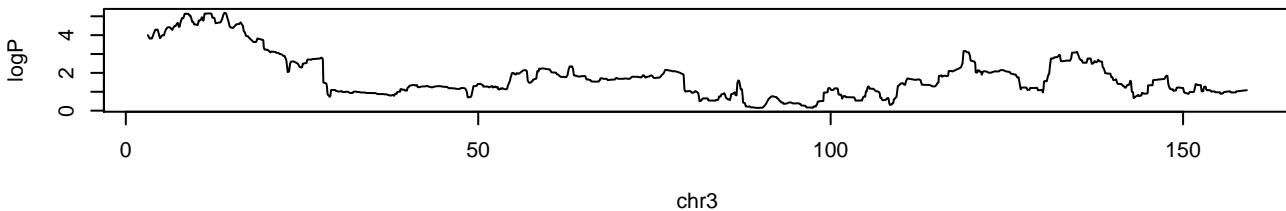
APC.Colon.total chr15 52504995 4.73 0.028



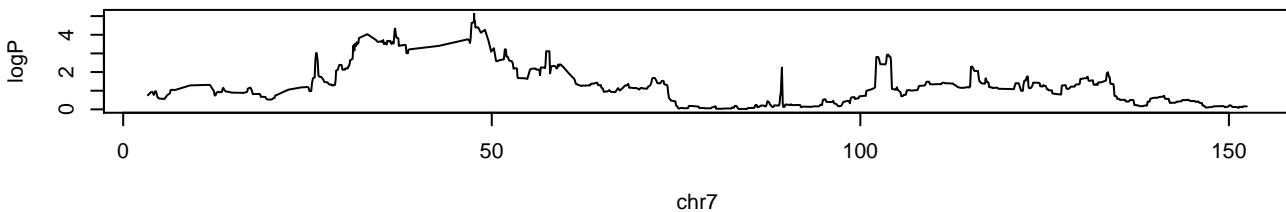
APC.Colon.total chr19 36869166 4.59 0.036



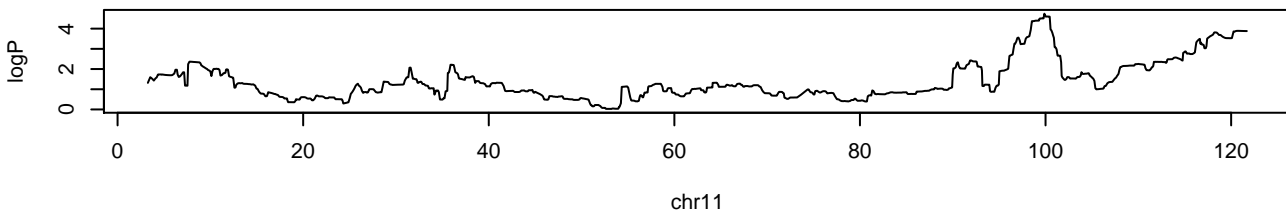
APC.SB1.1.2 chr3 13940116 5.19 0.046



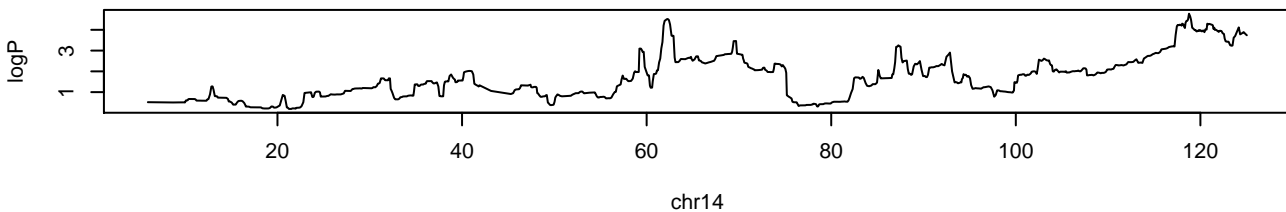
APC.SB1.1.2 chr7 47591369 5.13 0.056



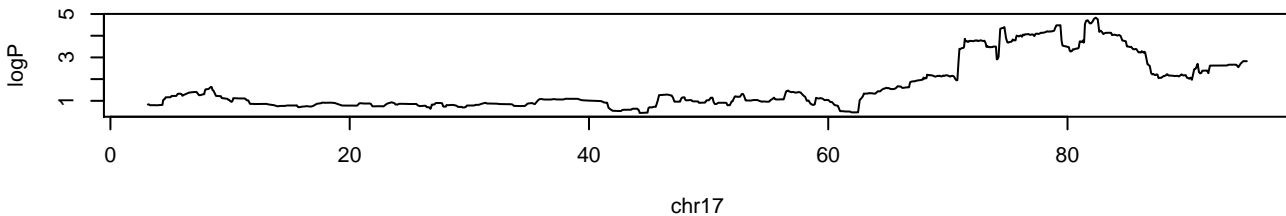
APC.SB1.1.2 chr11 99833162 4.74 0.098



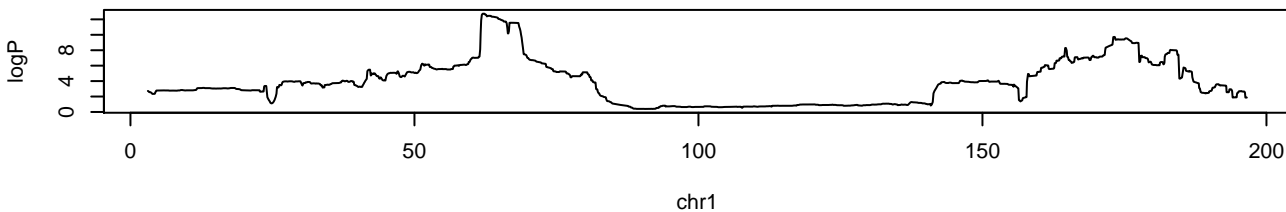
APC.SB1.1.2 chr14 118705843 4.77 0.096



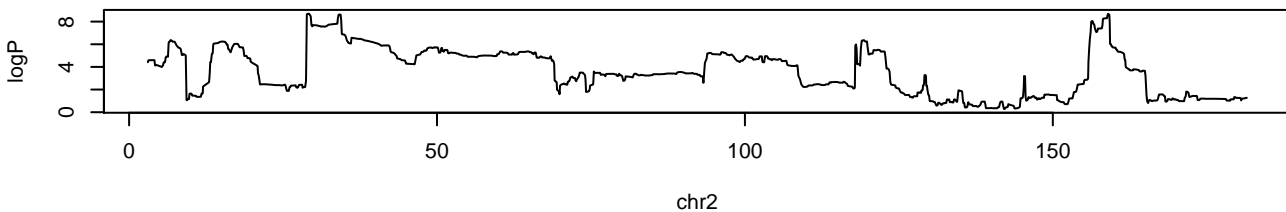
APC.SB1.1.2 chr17 82280366 4.83 0.092



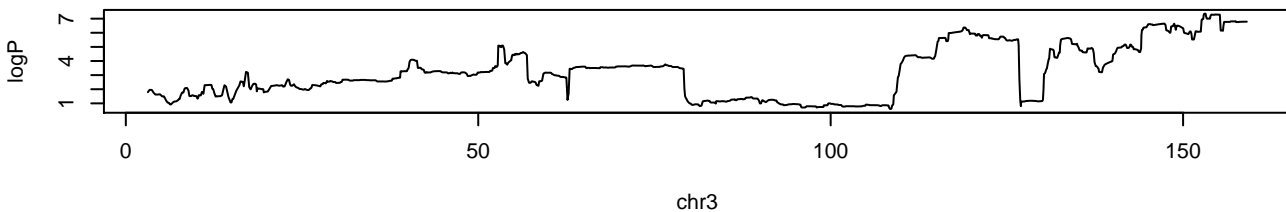
APC.SB1.3 chr1 61938202 12.7 0



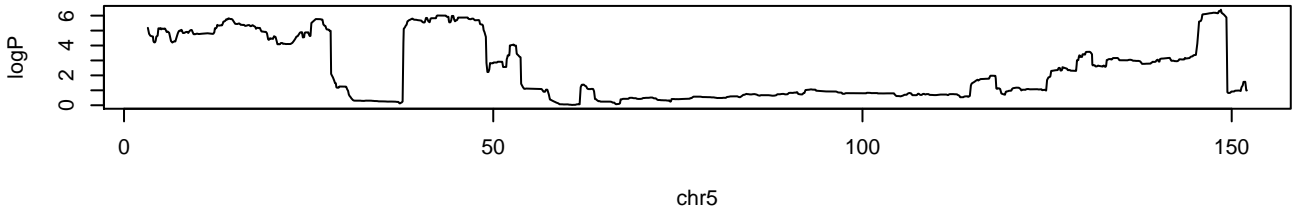
APC.SB1.3 chr2 29161348 8.7 0.002



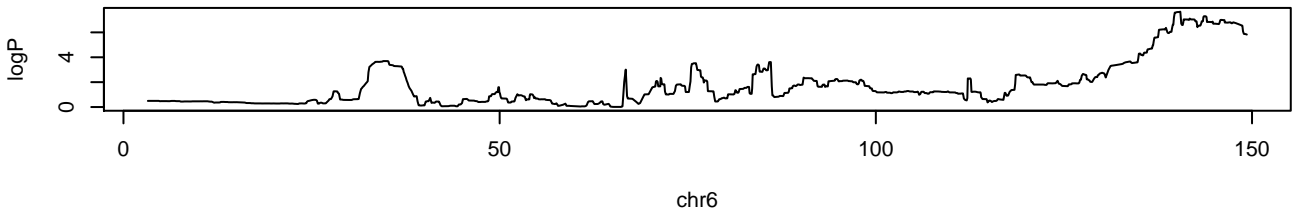
APC.SB1.3 chr3 152958891 7.35 0.014



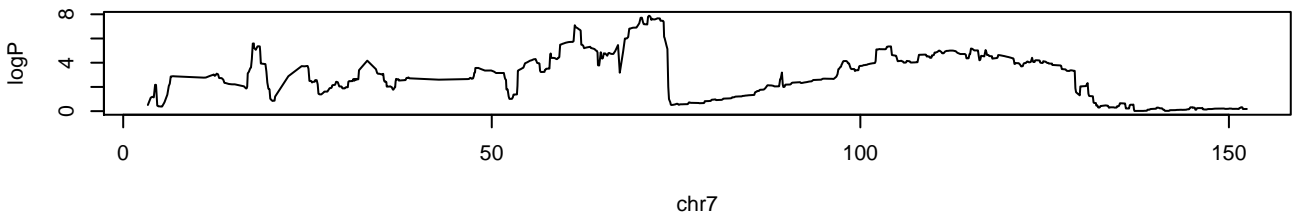
APC.SB1.3 chr5 148499745 6.4 0.056



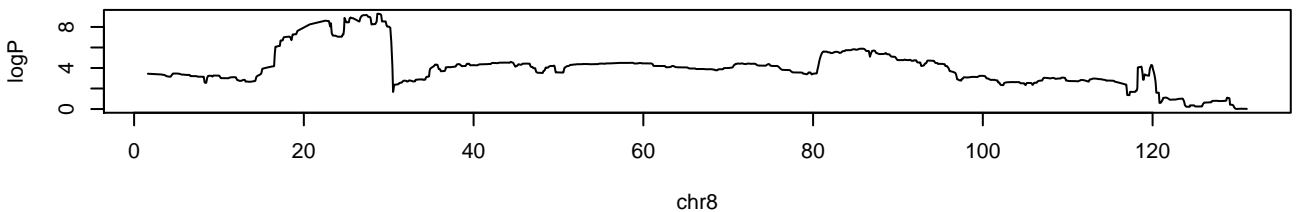
APC.SB1.3 chr6 140428133 7.66 0.008



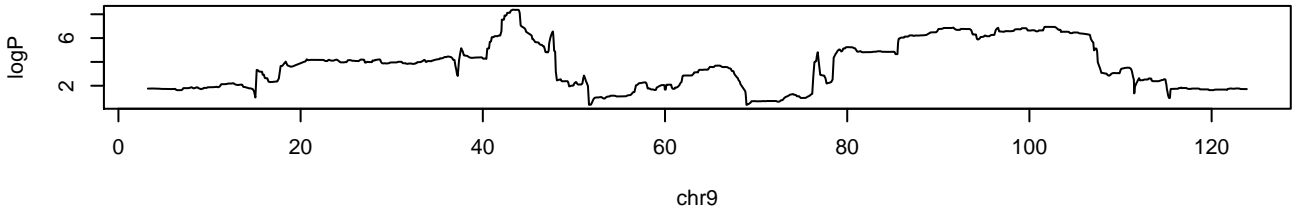
APC.SB1.3 chr7 71282113 7.88 0.006



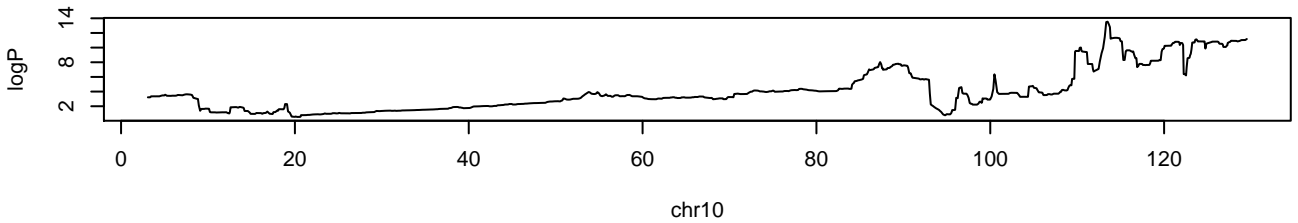
APC.SB1.3 chr8 28615439 9.29 0.002



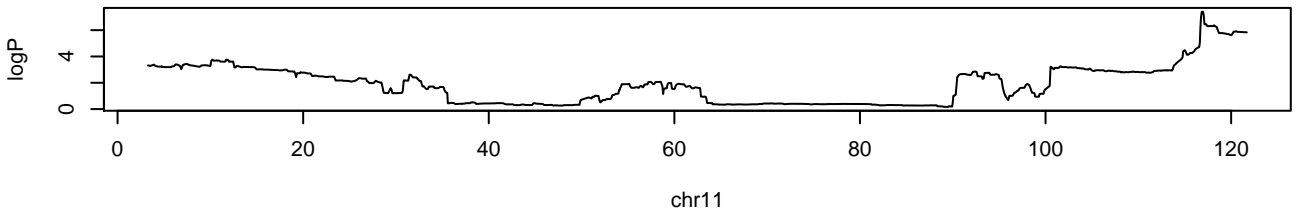
APC.SB1.3 chr9 43238674 8.38 0.004



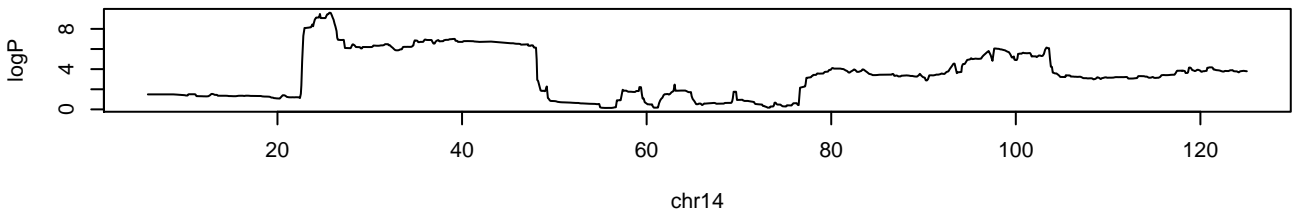
APC.SB1.3 chr10 113446025 13.5 0



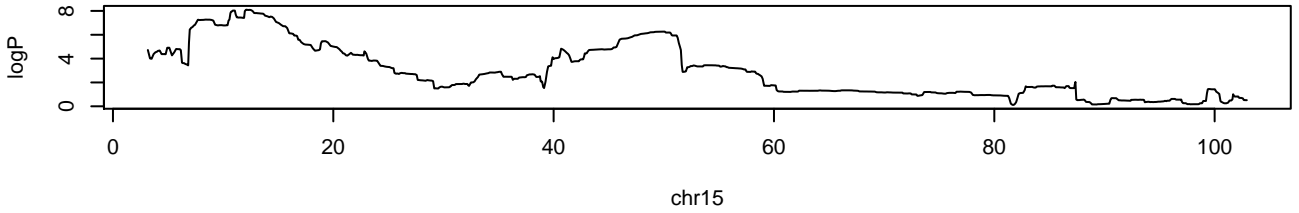
APC.SB1.3 chr11 116850140 7.4 0.014



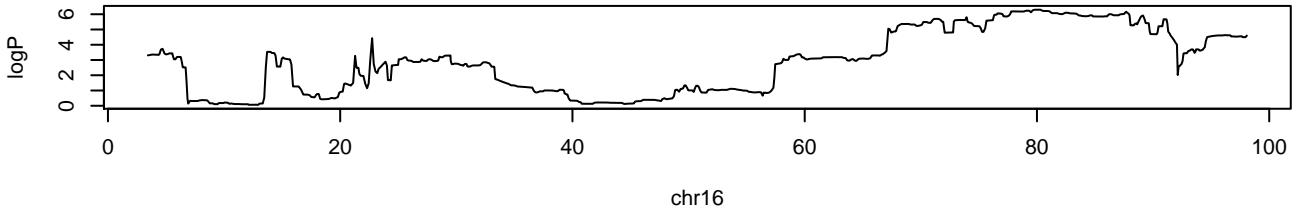
APC.SB1.3 chr14 25567118 9.61 0.002



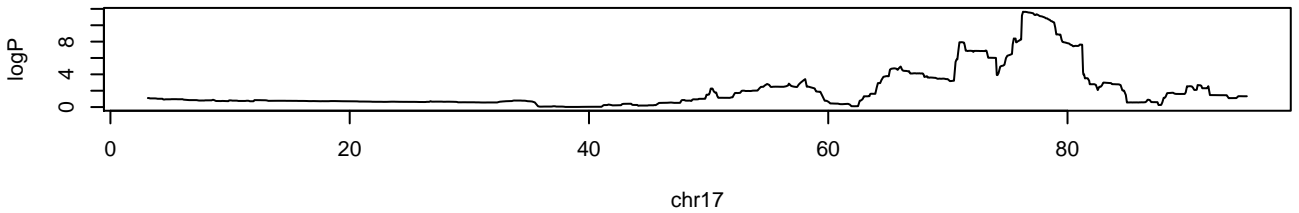
APC.SB1.3 chr15 12032747 8.1 0.006



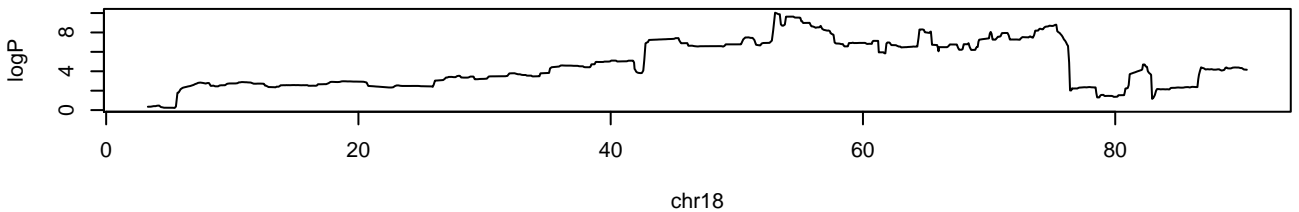
APC.SB1.3 chr16 80219492 6.3 0.062



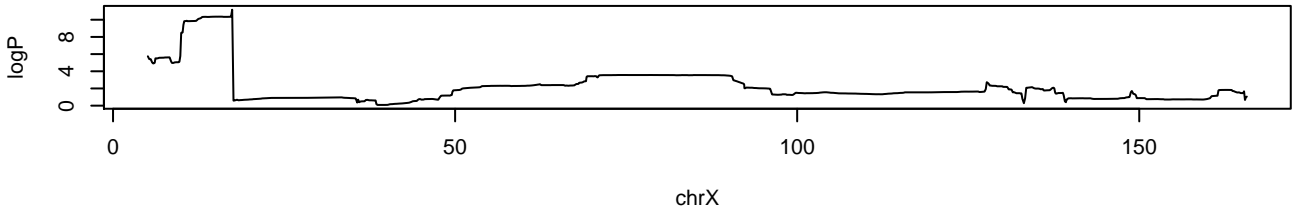
APC.SB1.3 chr17 76239661 11.7 0



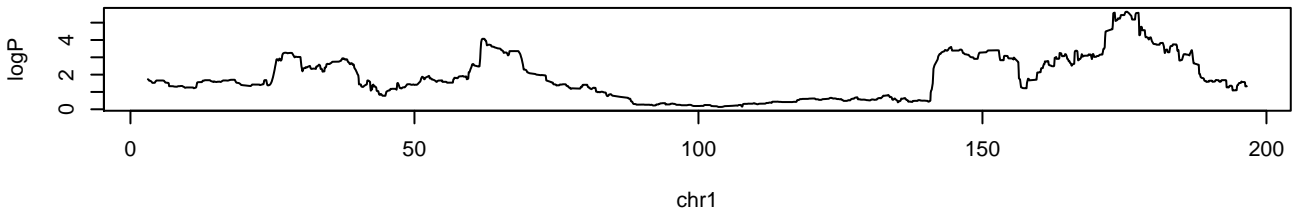
APC.SB1.3 chr18 52971904 10 0



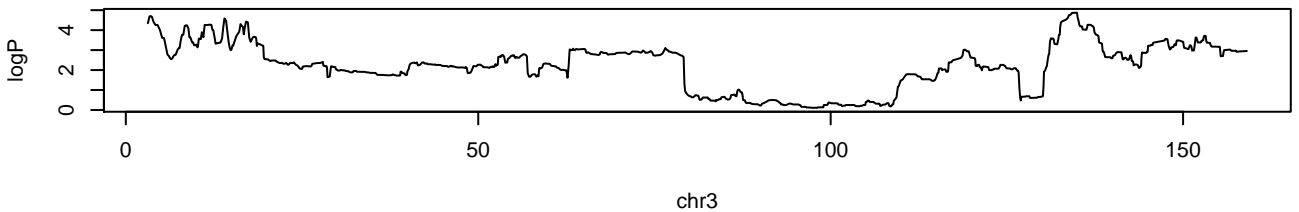
APC.SB1.3 chrX 17310887 11.2 0



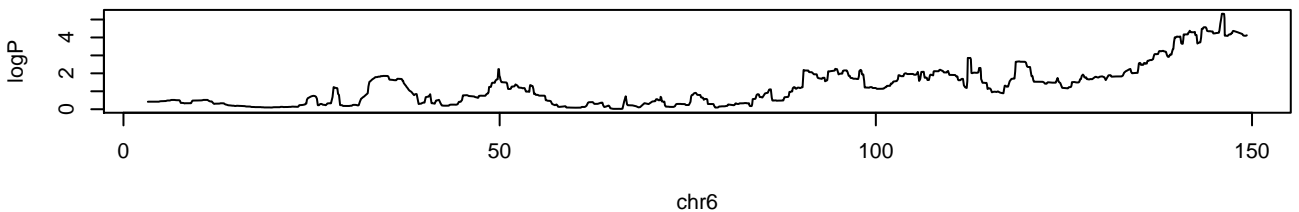
APC.SB1.total chr1 175344165 5.63 0.024



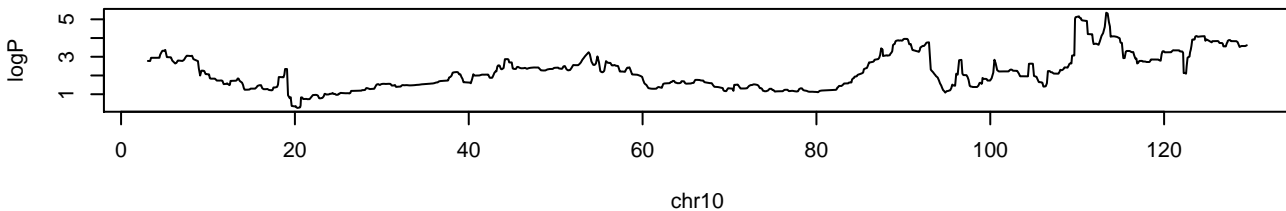
APC.SB1.total chr3 134817693 4.87 0.072



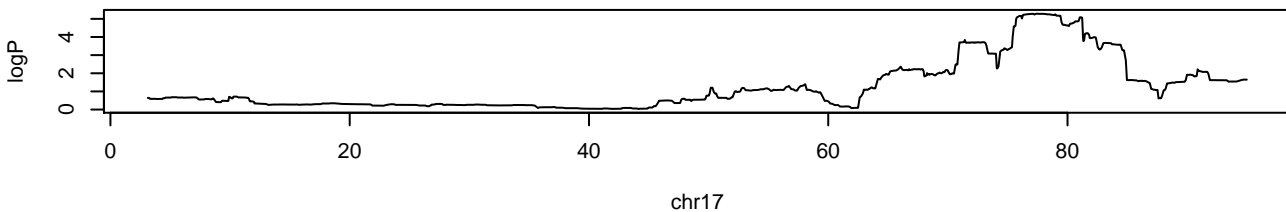
APC.SB1.total chr6 145956922 5.32 0.046



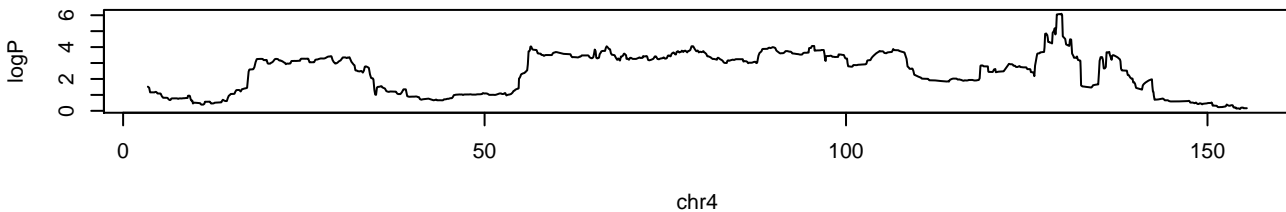
APC.SB1.total chr10 113264079 5.35 0.042



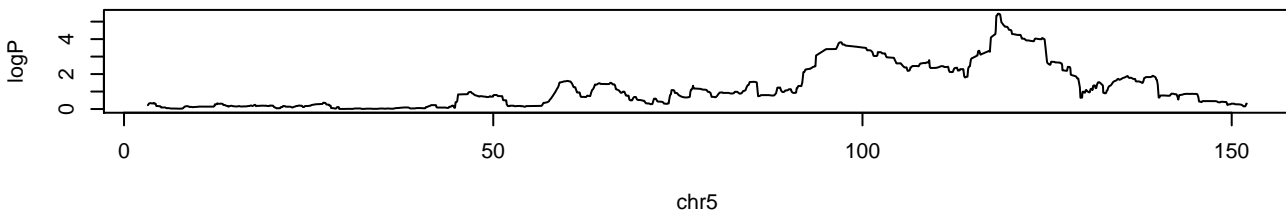
APC.SB1.total chr17 77435610 5.28 0.048



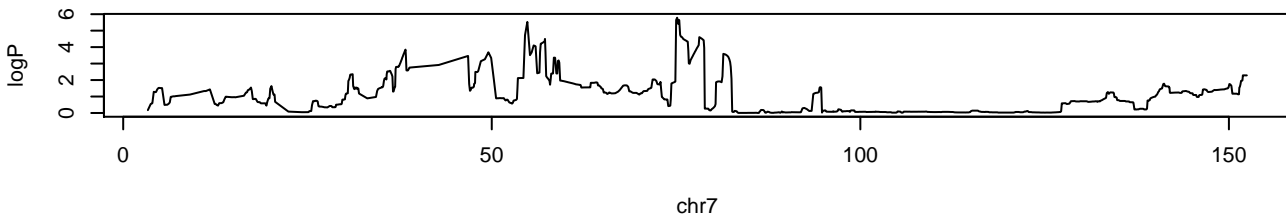
APC.SB2.1.2 chr4 129772864 6.09 0.038



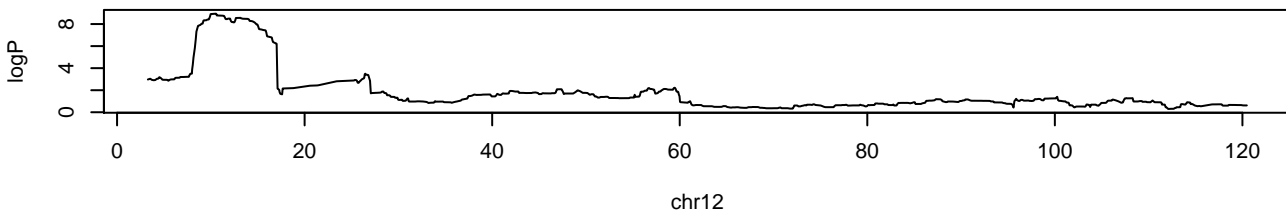
APC.SB2.1.2 chr5 118306819 5.45 0.076



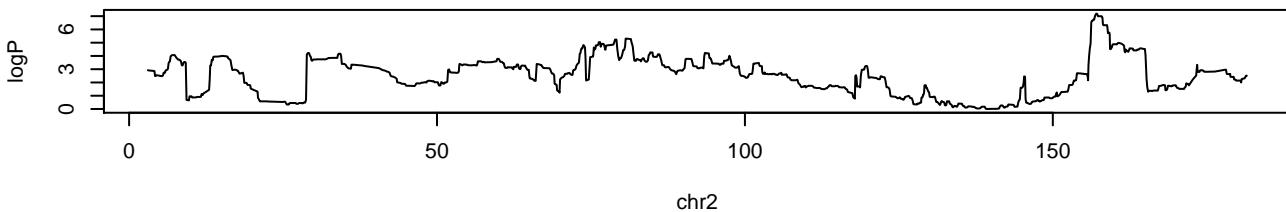
APC.SB2.1.2 chr7 75079109 5.78 0.056



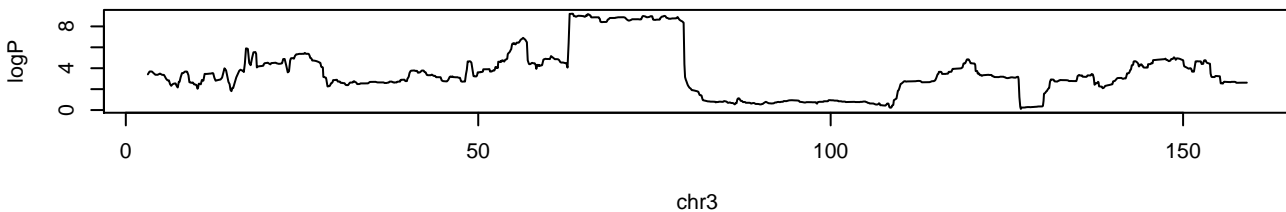
APC.SB2.1.2 chr12 10478999 8.94 0



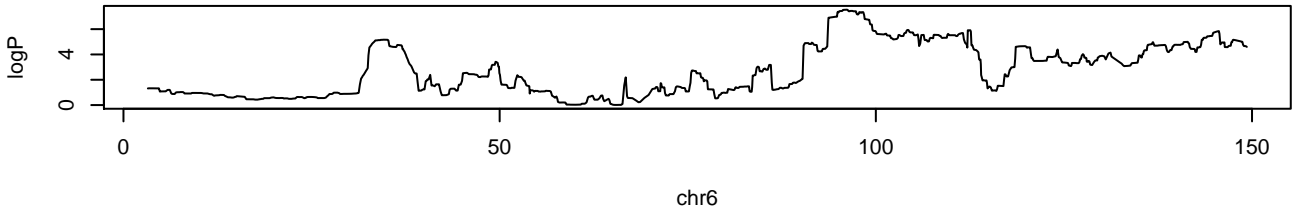
APC.SB2.1 chr2 157117350 7.18 0.094



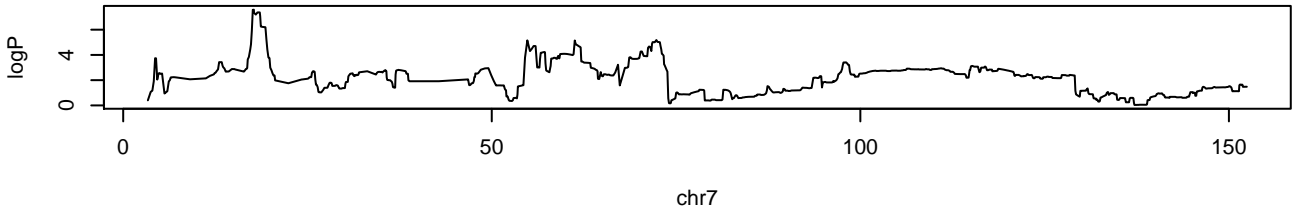
APC.SB2.1 chr3 63242002 9.21 0.014



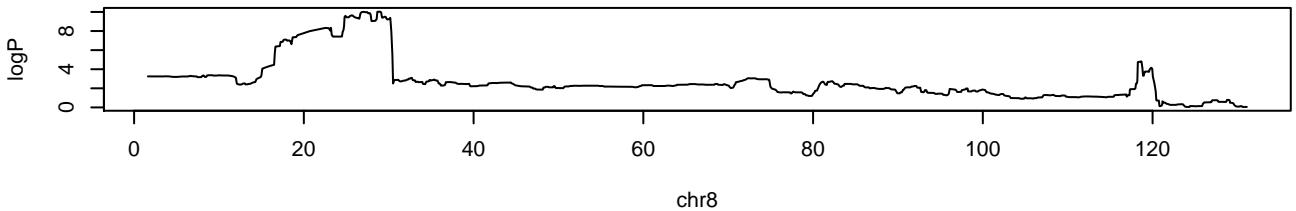
APC.SB2.1 chr6 96075775 7.53 0.076



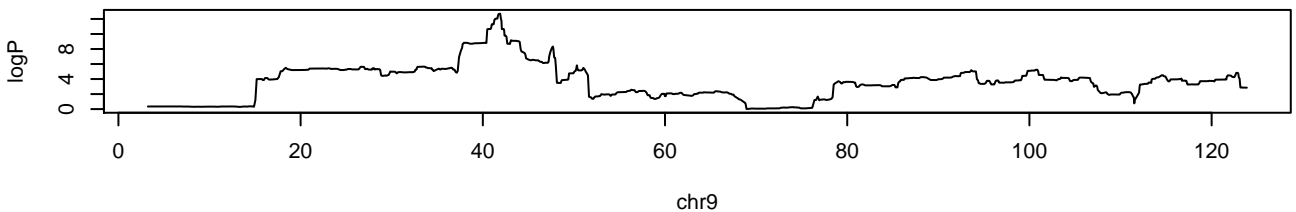
APC.SB2.1 chr7 17715315 7.58 0.072



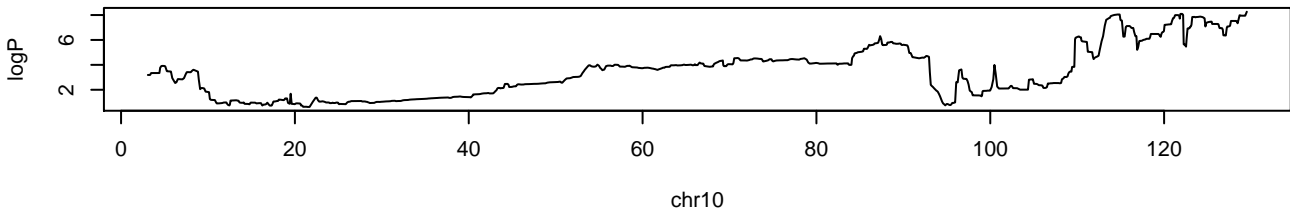
APC.SB2.1 chr8 28894830 10 0.006



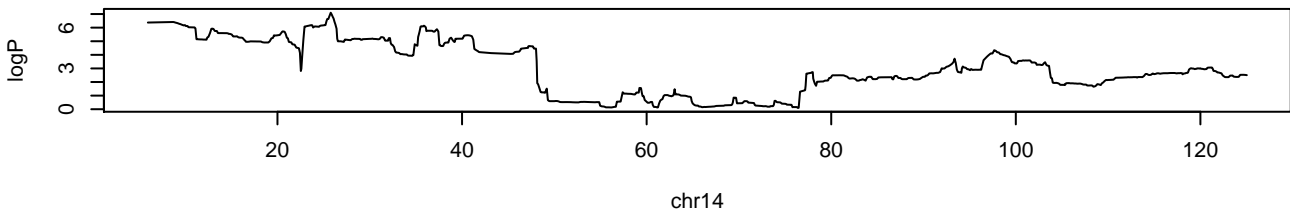
APC.SB2.1 chr9 41877786 12.7 0



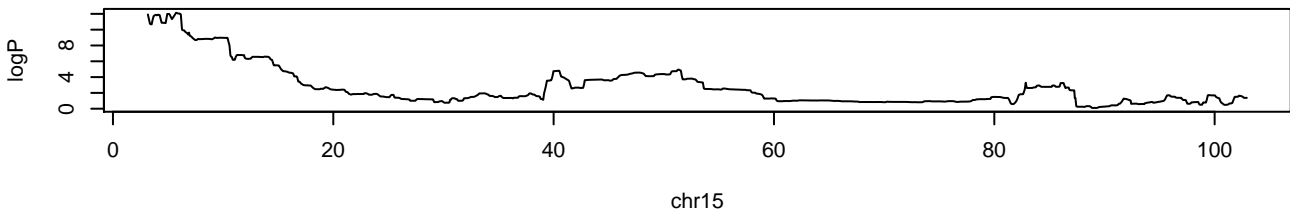
APC.SB2.1 chr10 129453534 8.27 0.032



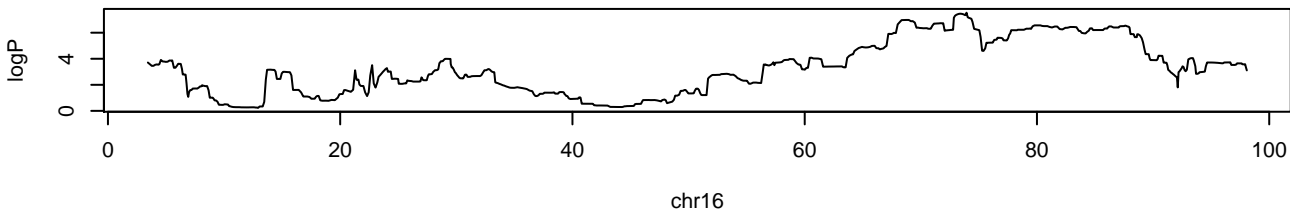
APC.SB2.1 chr14 25696665 7.1 0.096



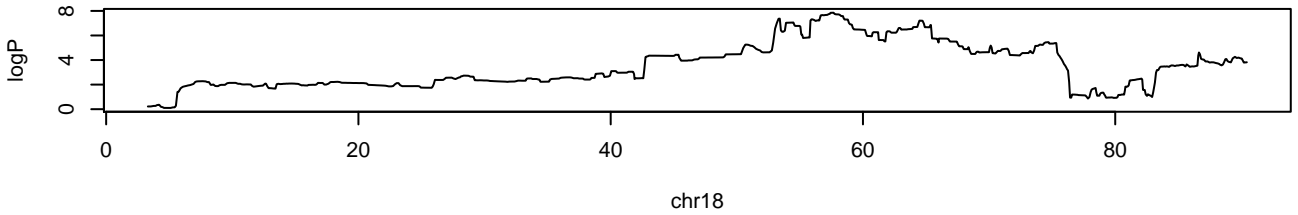
APC.SB2.1 chr15 5672648 12.1 0



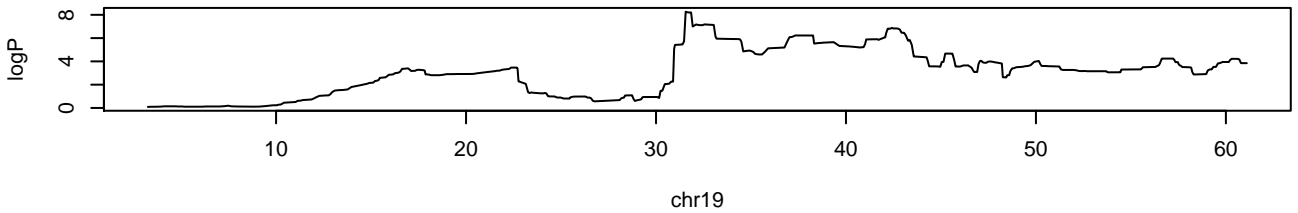
APC.SB2.1 chr16 73902550 7.53 0.076



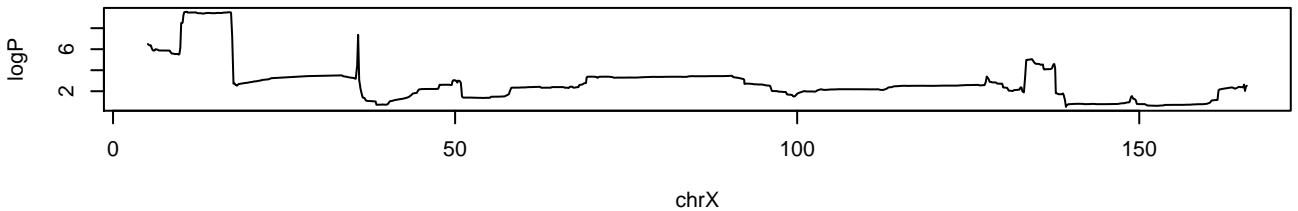
APC.SB2.1 chr18 57631979 7.85 0.06



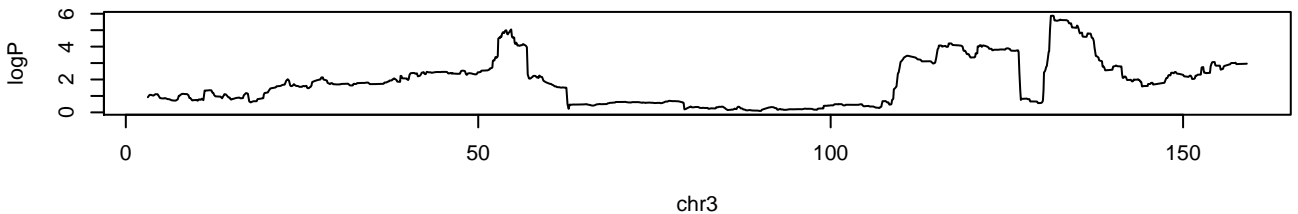
APC.SB2.1 chr19 31541649 8.27 0.032



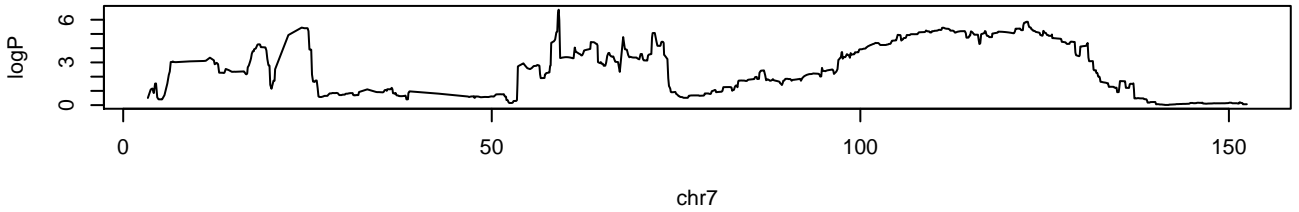
APC.SB2.1 chrX 10718419 9.57 0.01



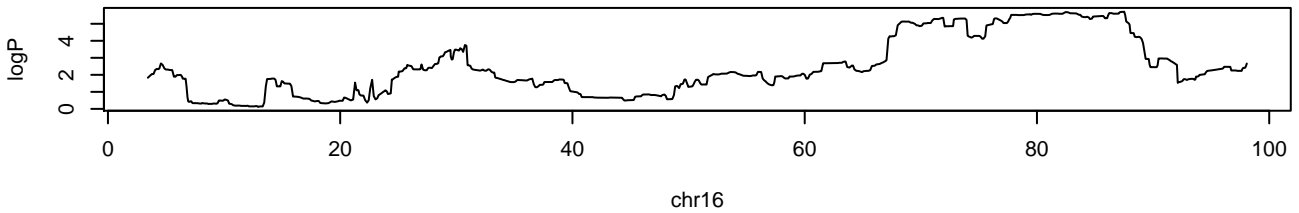
APC.SB2.2.3 chr3 131503485 5.88 0.07



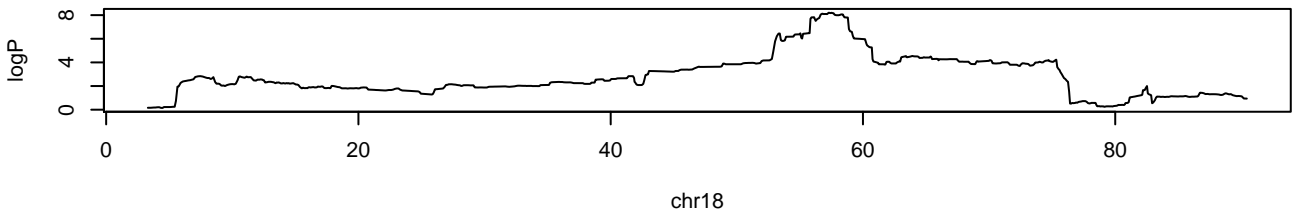
APC.SB2.2.3 chr7 59041684 6.7 0.016



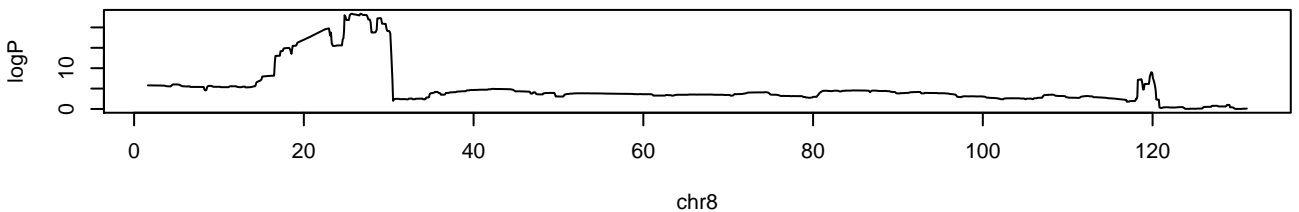
APC.SB2.2.3 chr16 87461069 5.71 0.086



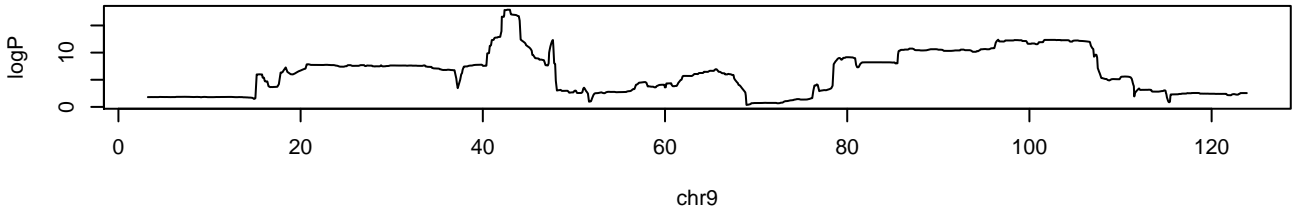
APC.SB2.2.3 chr18 57219106 8.2 0



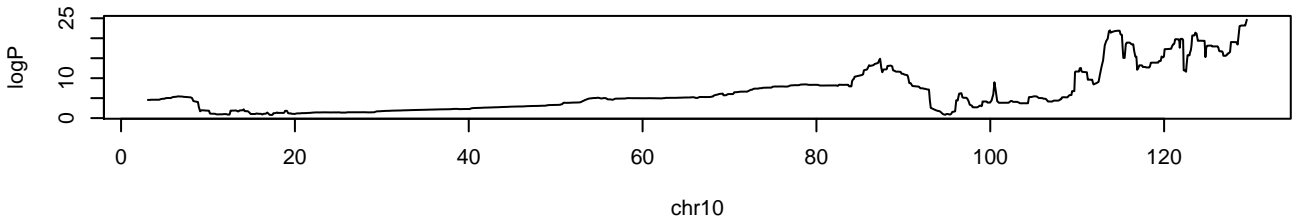
APC.SB2.3 chr8 26616159 23.4 0



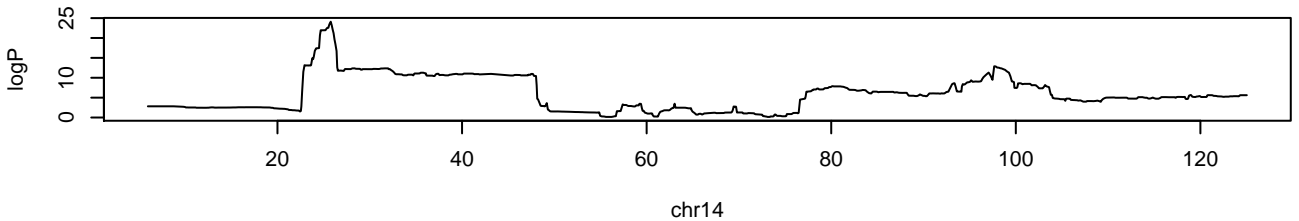
APC.SB2.3 chr9 42634692 17.9 0.062



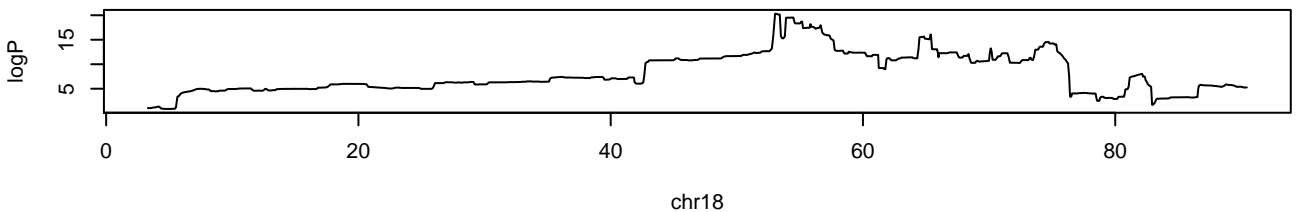
APC.SB2.3 chr10 129453534 24.6 0



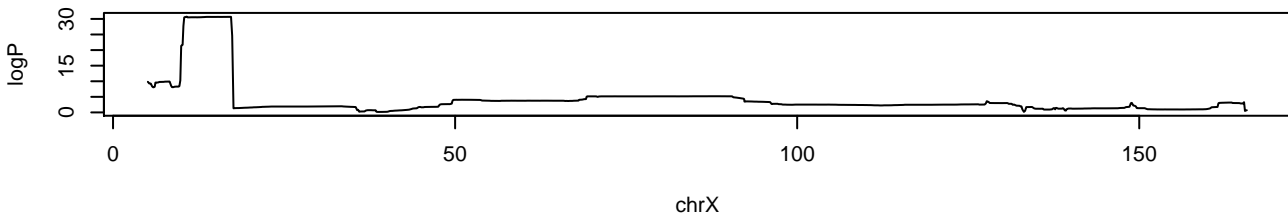
APC.SB2.3 chr14 25696665 24.1 0



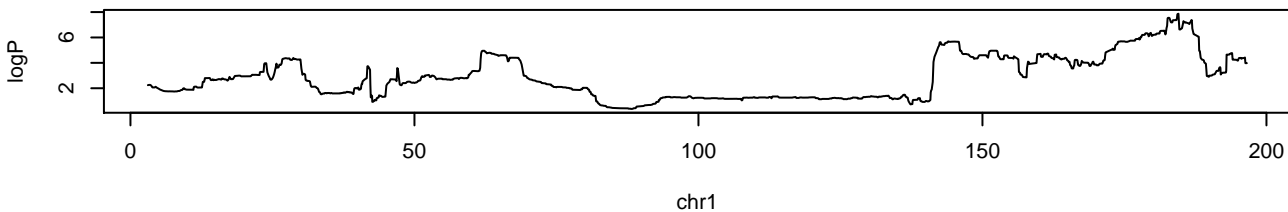
APC.SB2.3 chr18 52971904 20.3 0.012



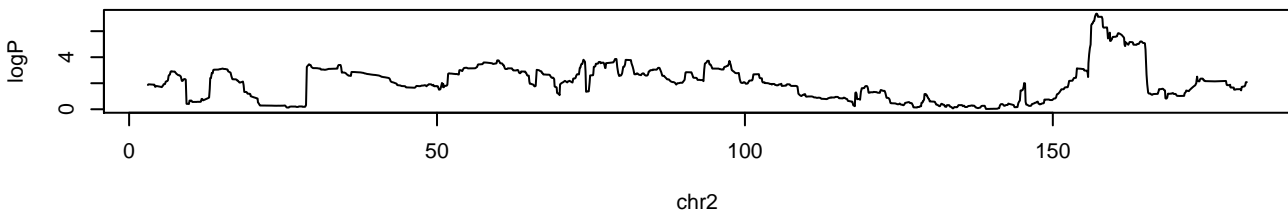
APC.SB2.3 chrX 10718419 30.7 0



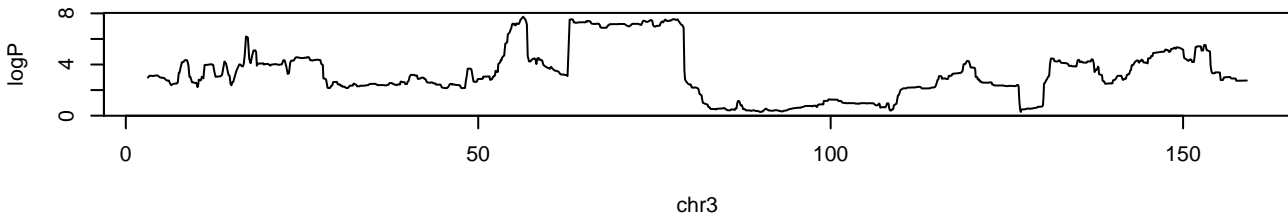
APC.SB2.total chr1 184444297 7.87 0



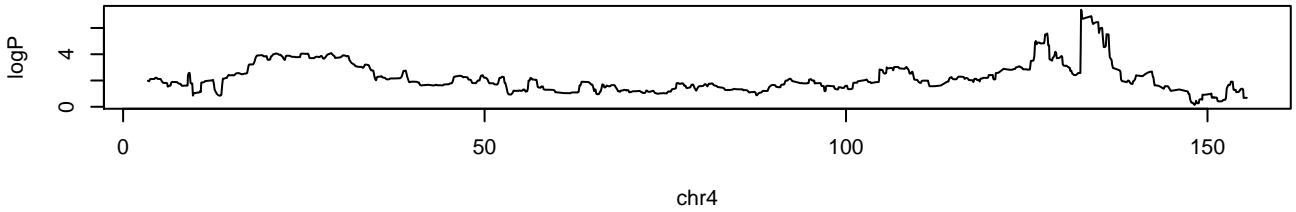
APC.SB2.total chr2 157117350 7.34 0



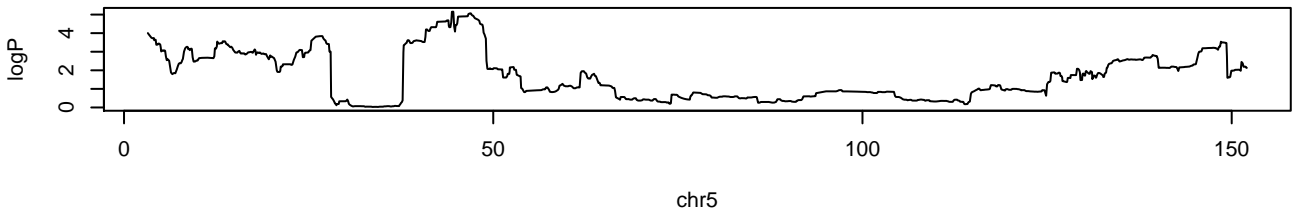
APC.SB2.total chr3 56270215 7.74 0



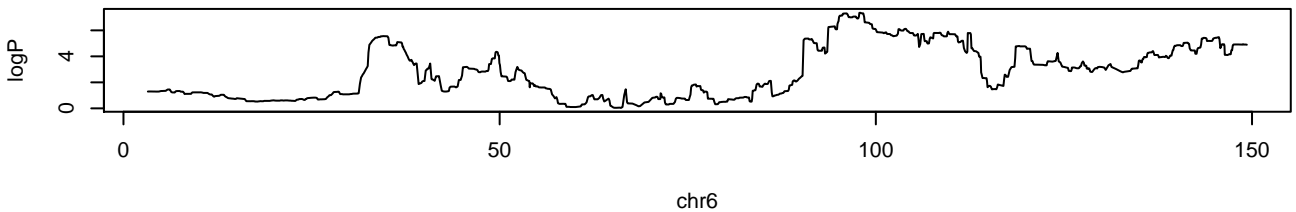
APC.SB2.total chr4 132492566 7.39 0



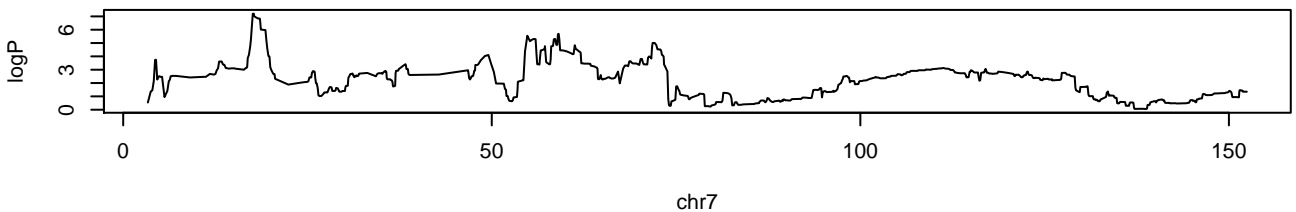
APC.SB2.total chr5 44548564 5.15 0.042



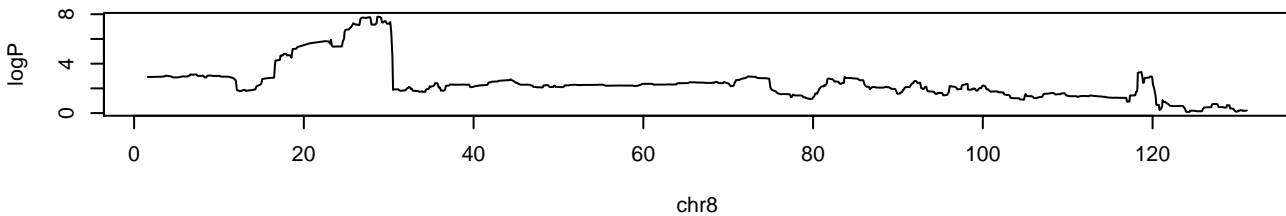
APC.SB2.total chr6 97920357 7.36 0



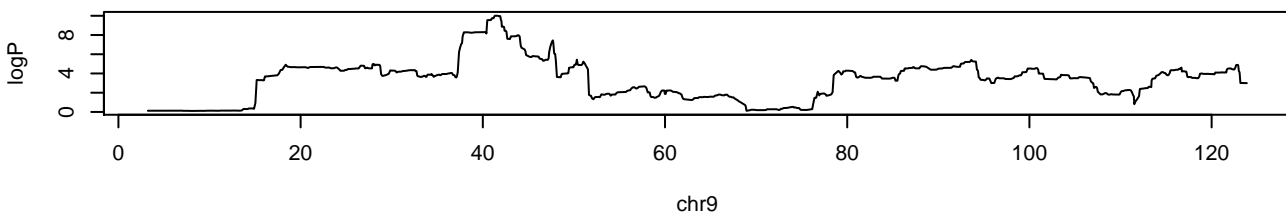
APC.SB2.total chr7 17715315 7.2 0



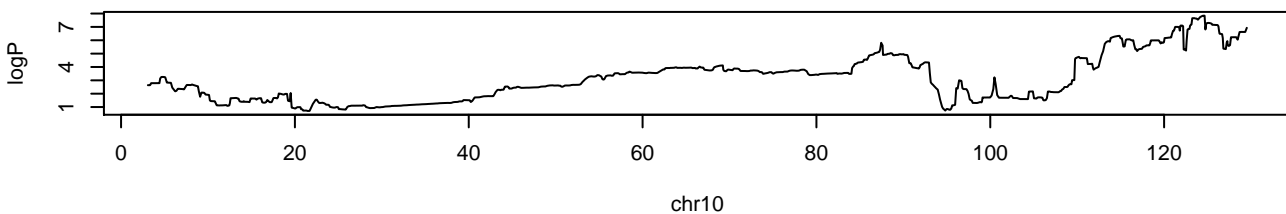
APC.SB2.total chr8 28615439 7.8 0



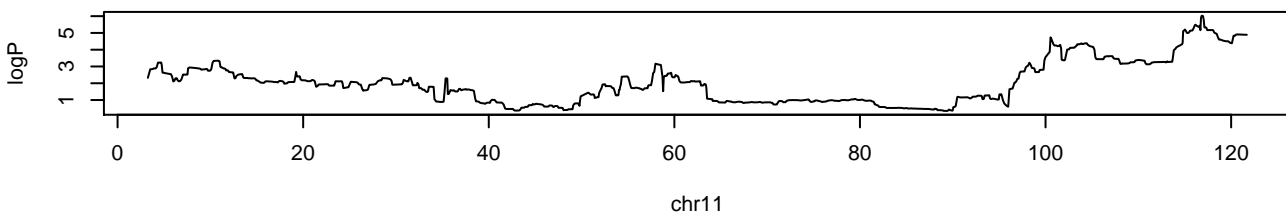
APC.SB2.total chr9 41326208 10 0



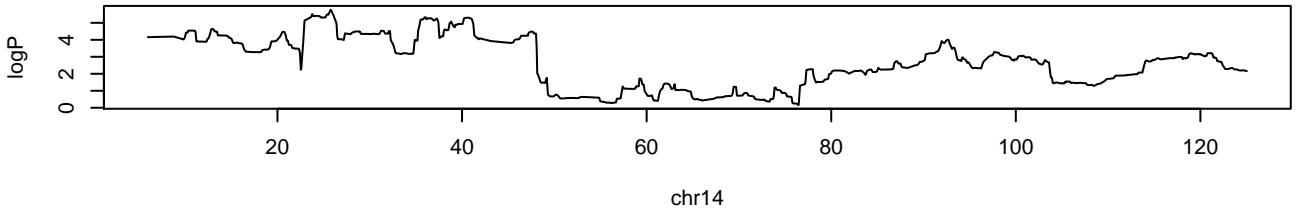
APC.SB2.total chr10 124620255 7.84 0



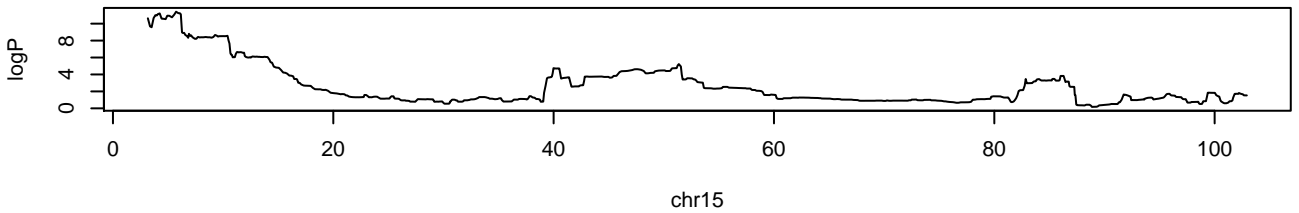
APC.SB2.total chr11 116814109 6.03 0.004



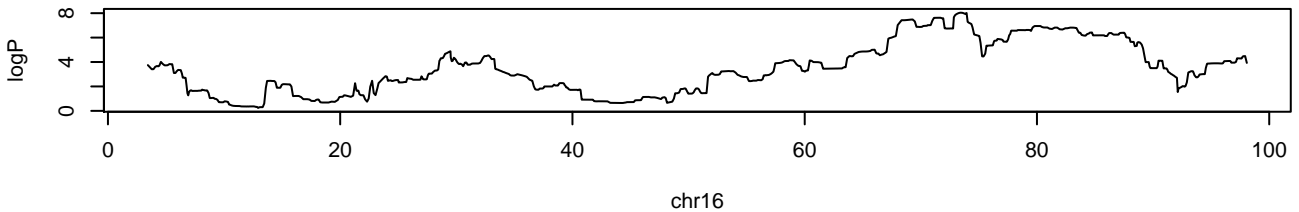
APC.SB2.total chr14 25696665 5.77 0.012



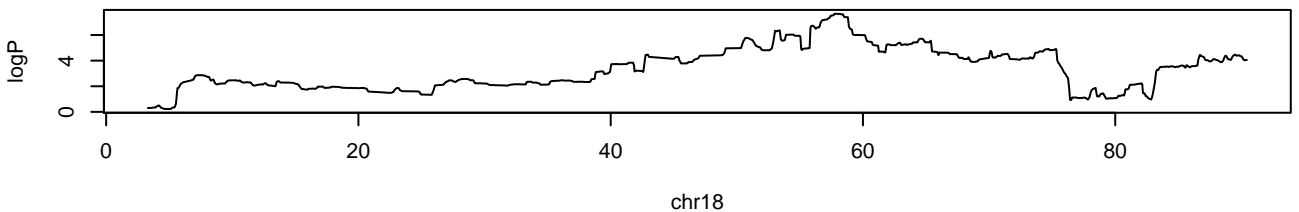
APC.SB2.total chr15 5672648 11.4 0



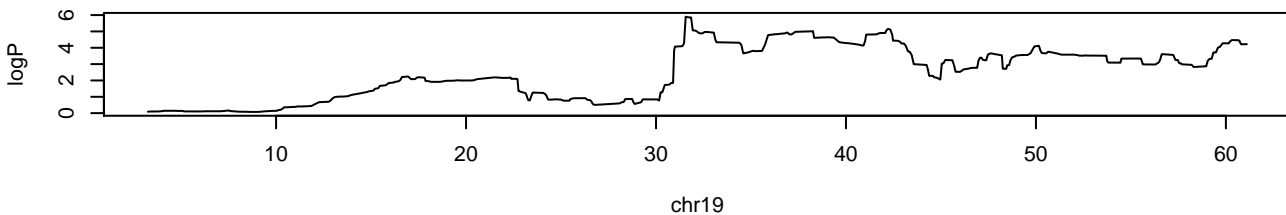
APC.SB2.total chr16 73290236 8.04 0



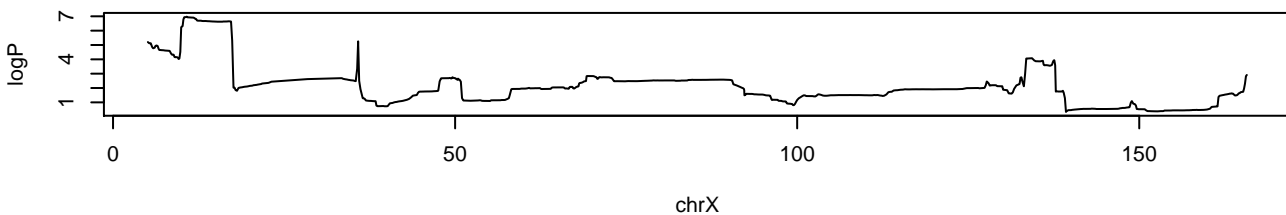
APC.SB2.total chr18 57703231 7.66 0



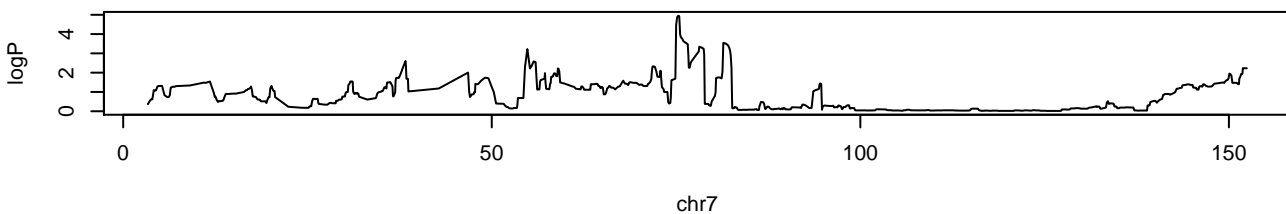
APC.SB2.total chr19 31541649 5.9 0.008



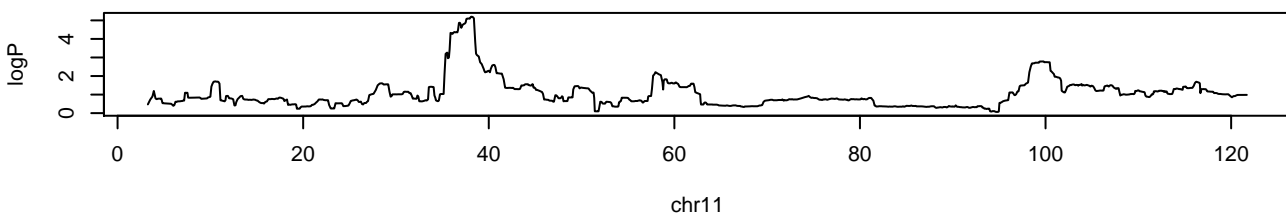
APC.SB2.total chrX 10791893 6.97 0



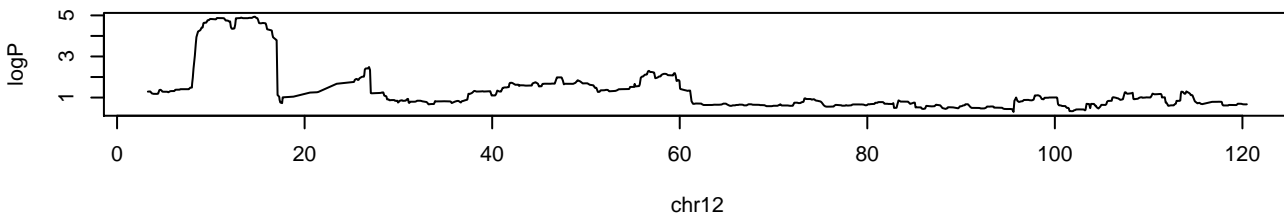
APC.SB3.1.2 chr7 75330759 4.95 0.084



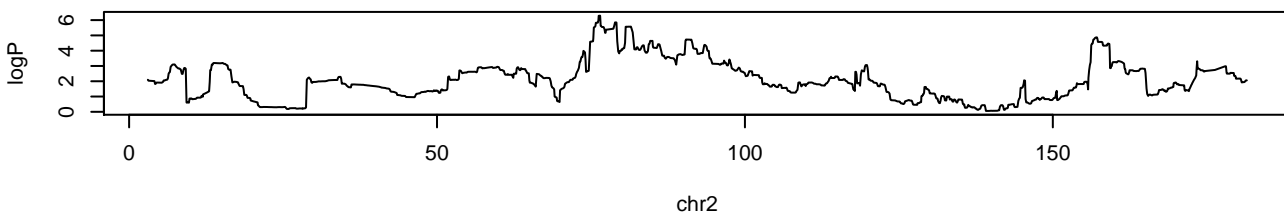
APC.SB3.1.2 chr11 38014836 5.2 0.056



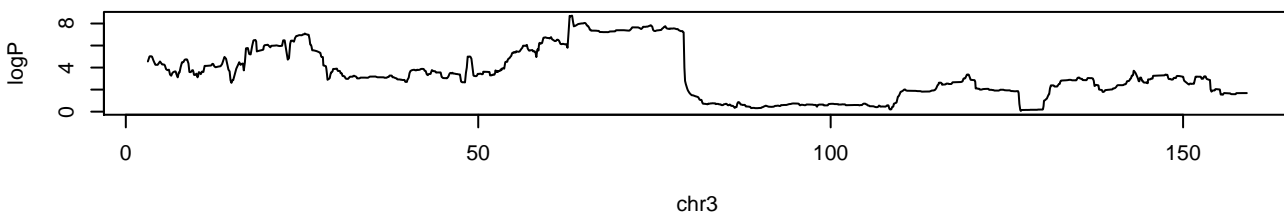
APC.SB3.1.2 chr12 14641108 4.94 0.092



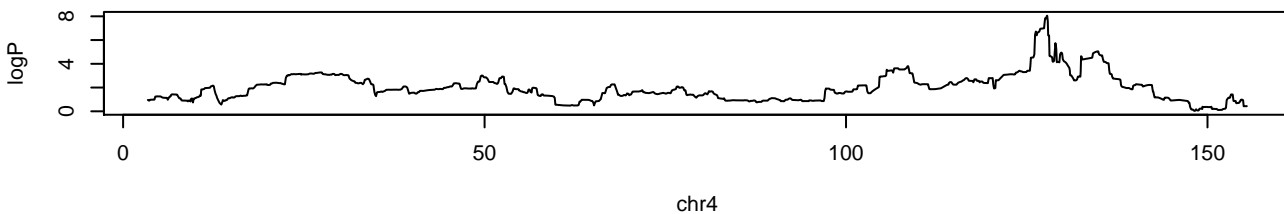
APC.SB3.1 chr2 76433122 6.29 0.004



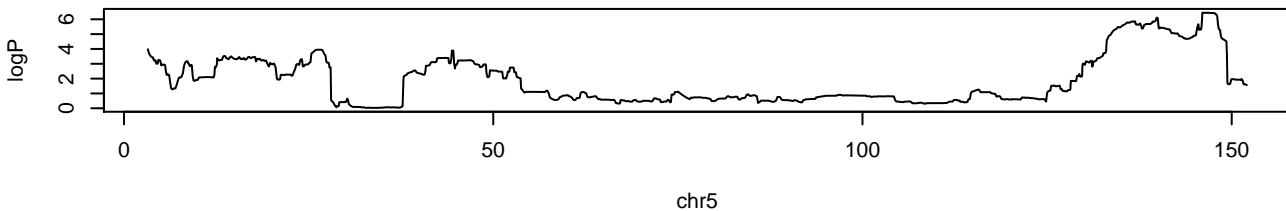
APC.SB3.1 chr3 63242002 8.71 0



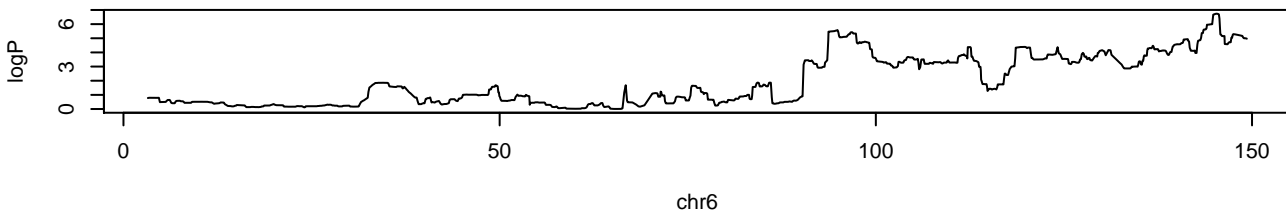
APC.SB3.1 chr4 127800069 8.05 0



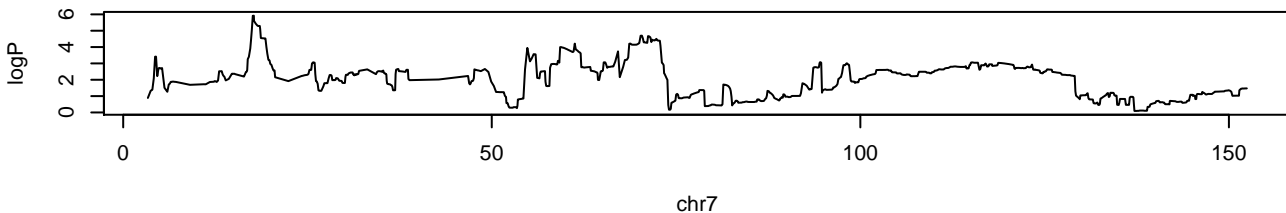
APC.SB3.1 chr5 146100051 6.44 0.004



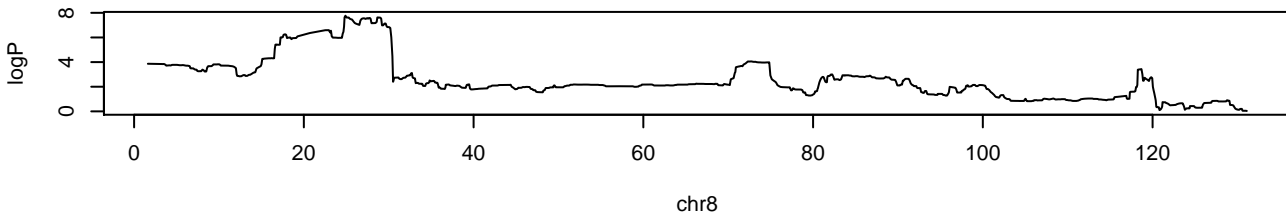
APC.SB3.1 chr6 145215573 6.74 0



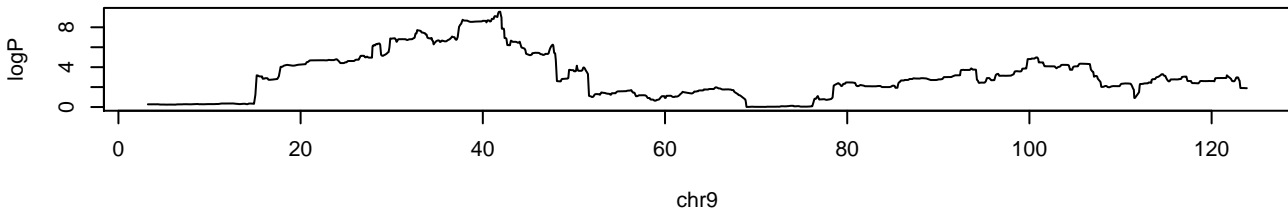
APC.SB3.1 chr7 17715315 5.92 0.024



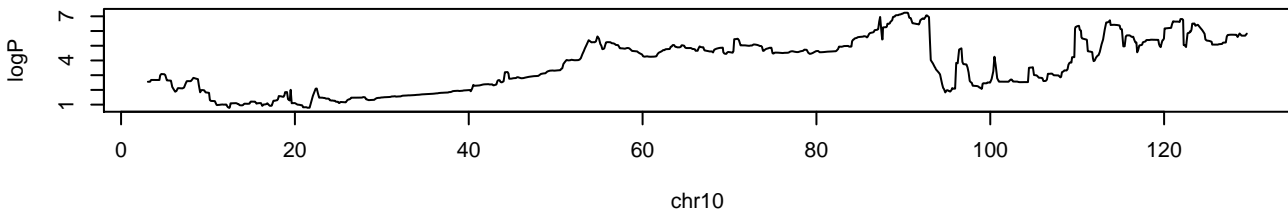
APC.SB3.1 chr8 24856072 7.77 0



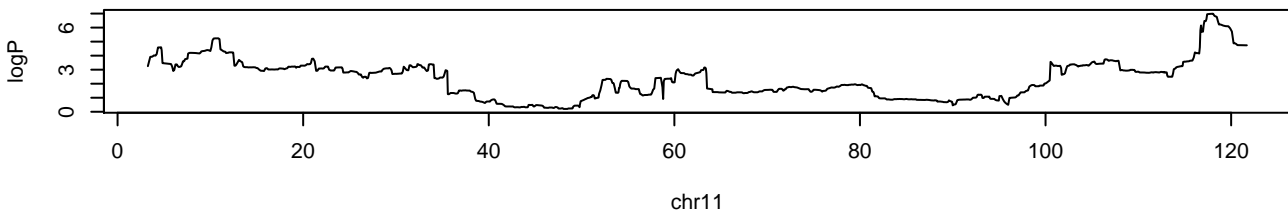
APC.SB3.1 chr9 41877786 9.56 0



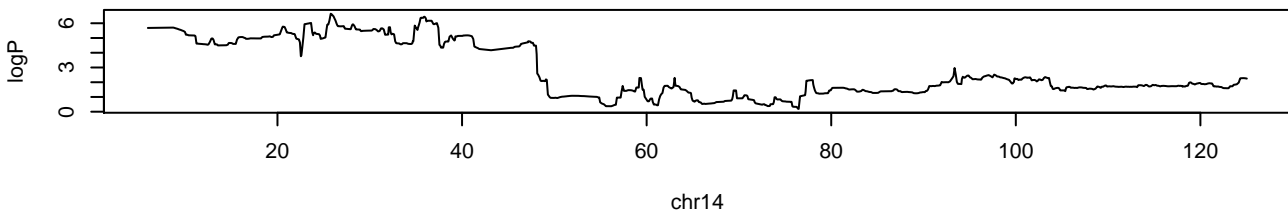
APC.SB3.1 chr10 90409877 7.24 0



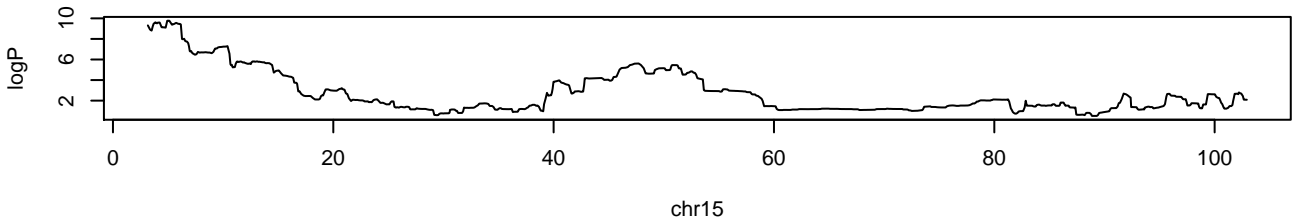
APC.SB3.1 chr11 117999888 6.99 0



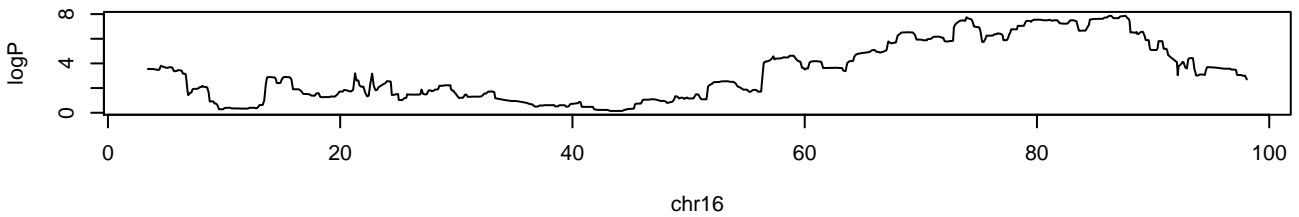
APC.SB3.1 chr14 25696665 6.65 0



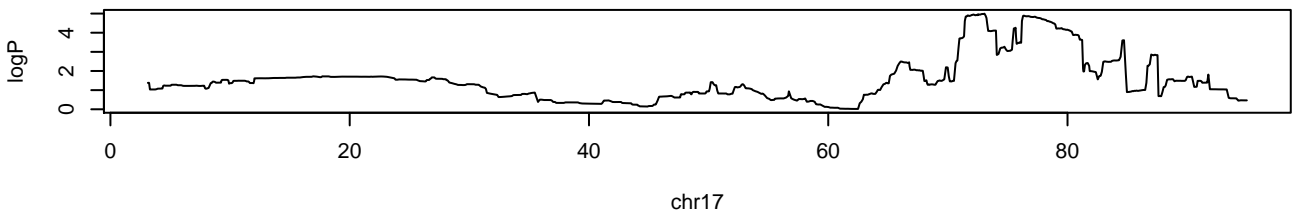
APC.SB3.1 chr15 5033757 9.77 0



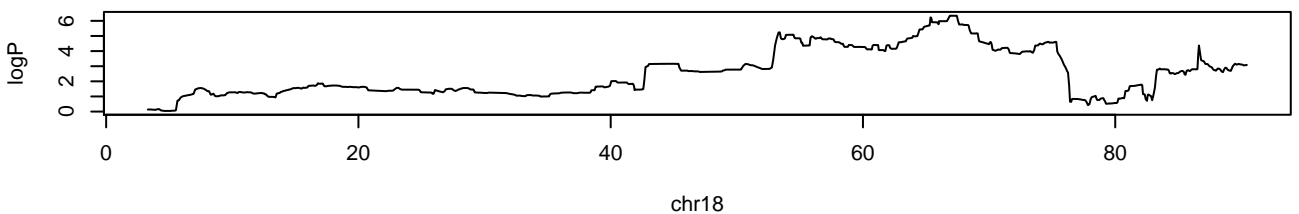
APC.SB3.1 chr16 87563881 7.87 0



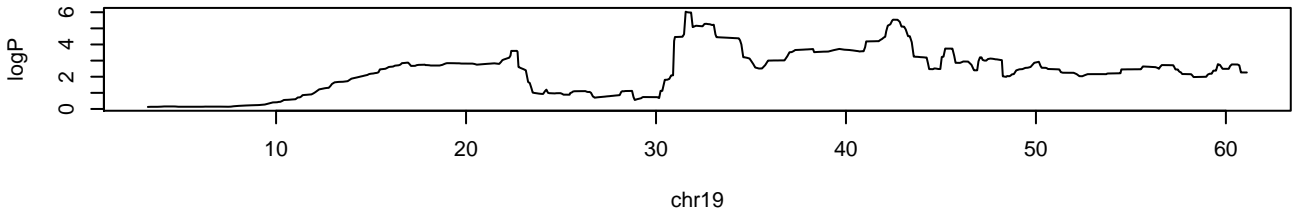
APC.SB3.1 chr17 73015833 4.99 0.086



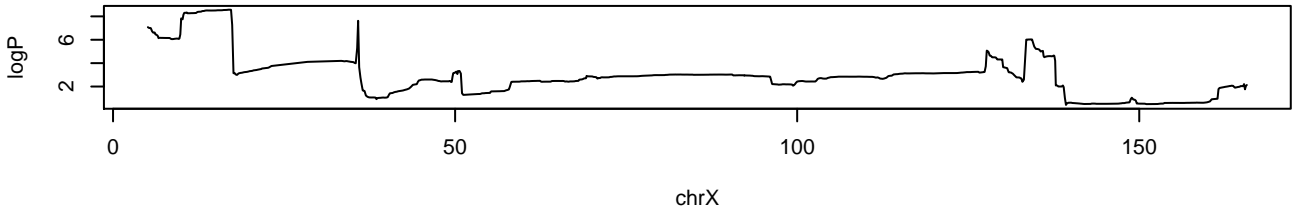
APC.SB3.1 chr18 66817683 6.34 0.004



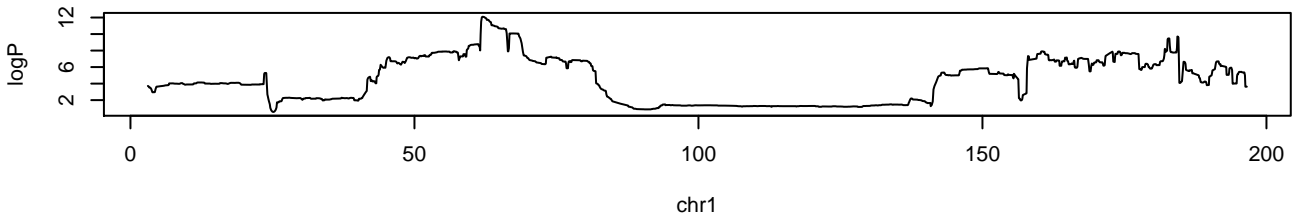
APC.SB3.1 chr19 31541649 6.03 0.016



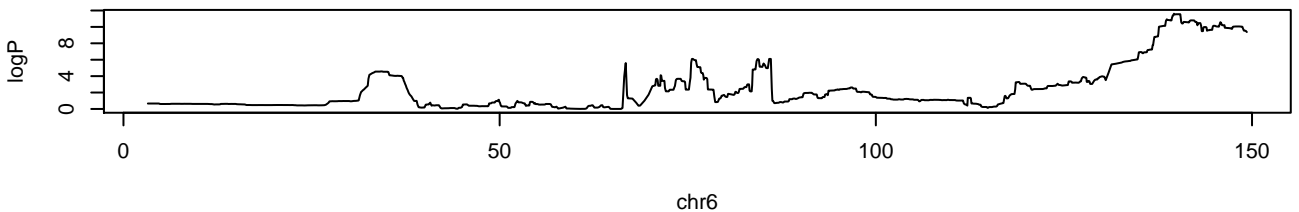
APC.SB3.1 chrX 16925629 8.57 0



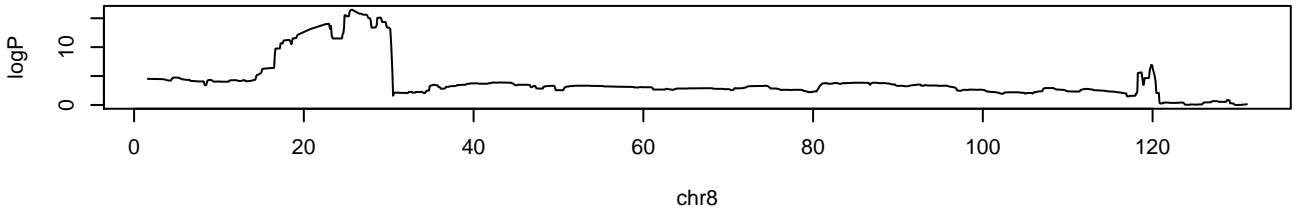
APC.SB3.3 chr1 61938202 12.1 0.044



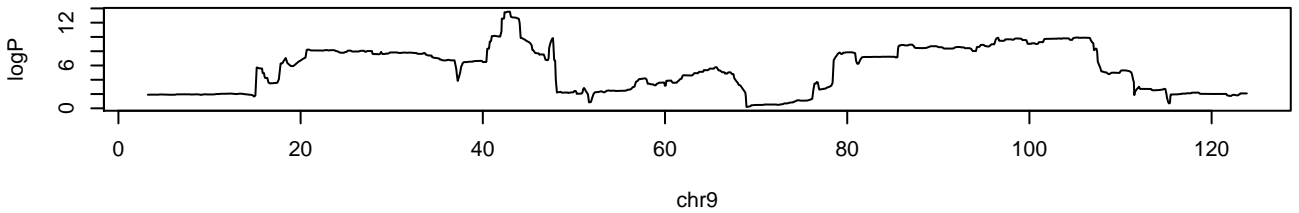
APC.SB3.3 chr6 139551103 11.6 0.058



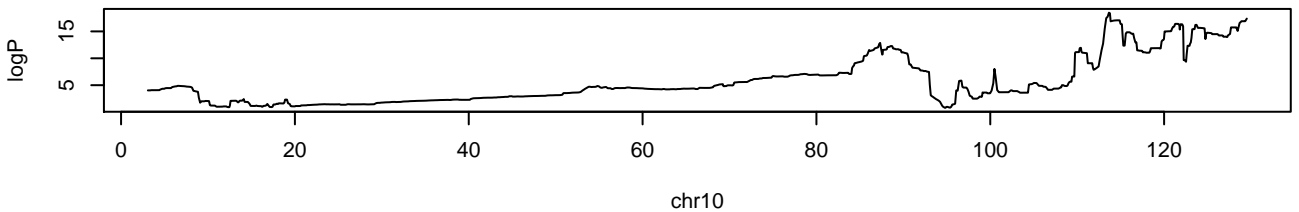
APC.SB3.3 chr8 25628971 16.5 0



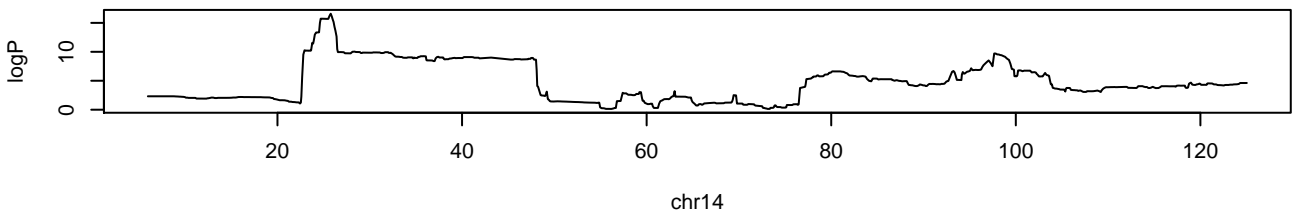
APC.SB3.3 chr9 42634692 13.5 0.014



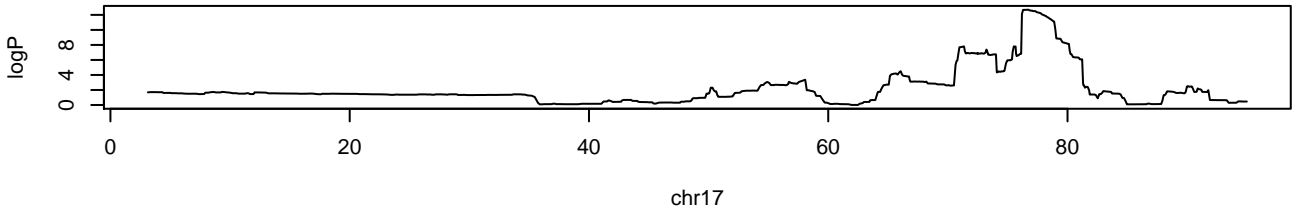
APC.SB3.3 chr10 113590969 18.5 0



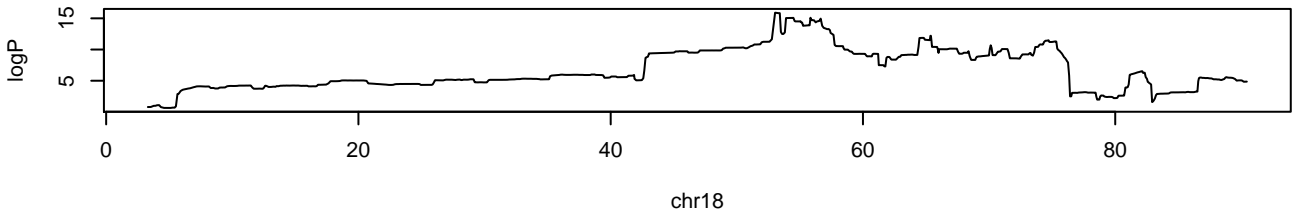
APC.SB3.3 chr14 25696665 16.6 0



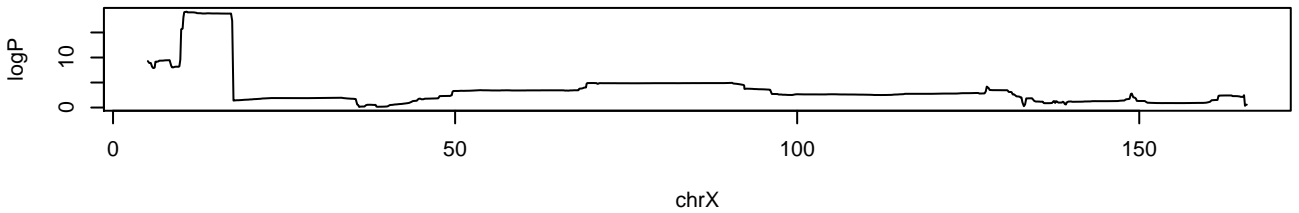
APC.SB3.3 chr17 76673650 12.7 0.028



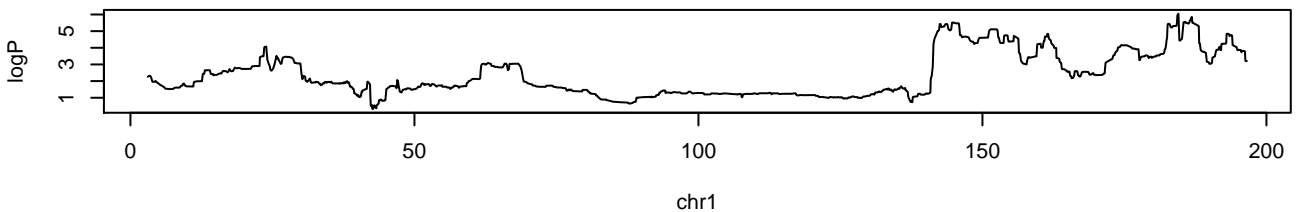
APC.SB3.3 chr18 52971904 15.9 0



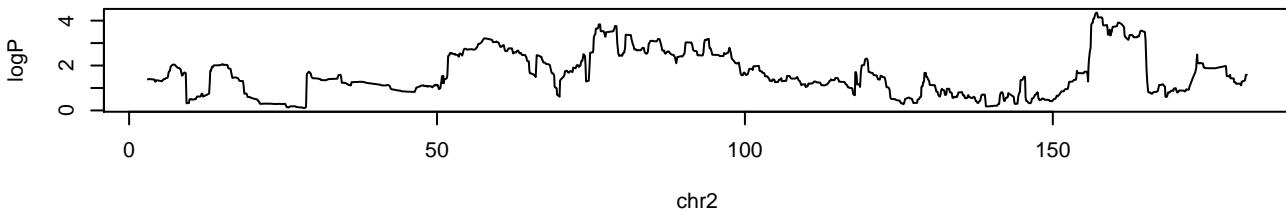
APC.SB3.3 chrX 10718419 19.2 0



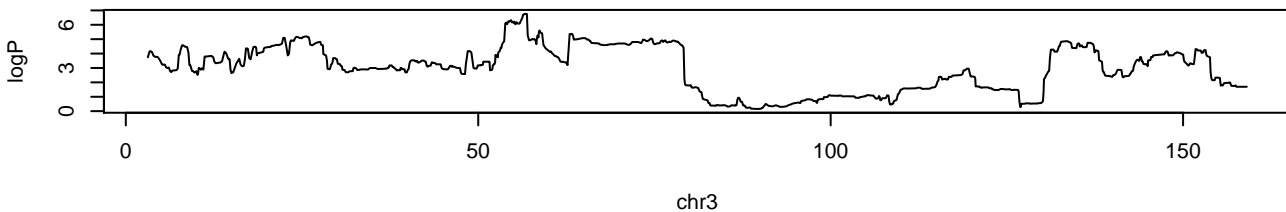
APC.SB3.total chr1 184444297 6.05 0



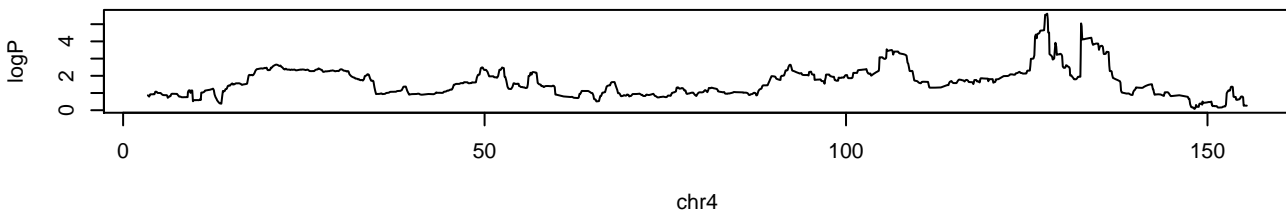
APC.SB3.total chr2 157117350 4.35 0.062



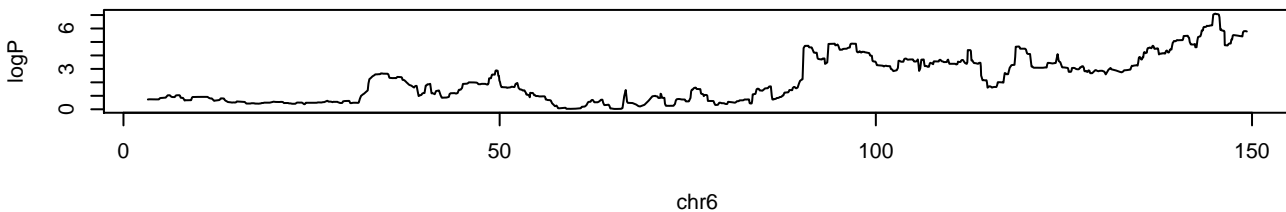
APC.SB3.total chr3 56591322 6.77 0



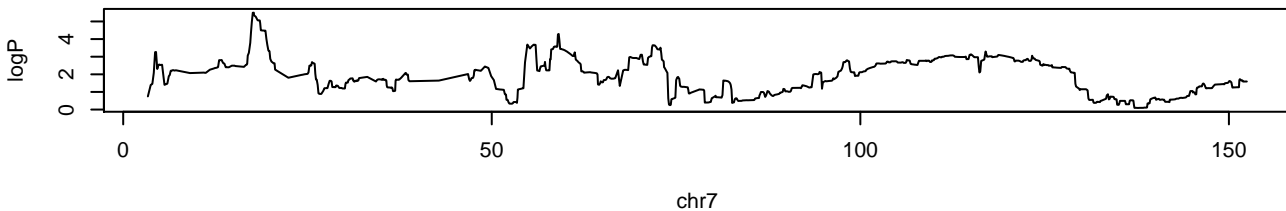
APC.SB3.total chr4 127800069 5.61 0.004



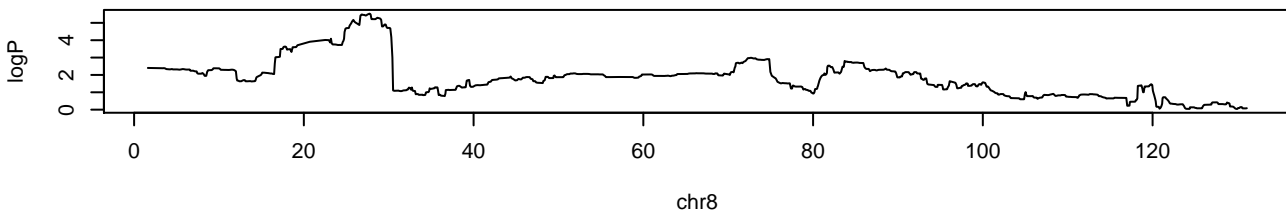
APC.SB3.total chr6 145050929 7.1 0



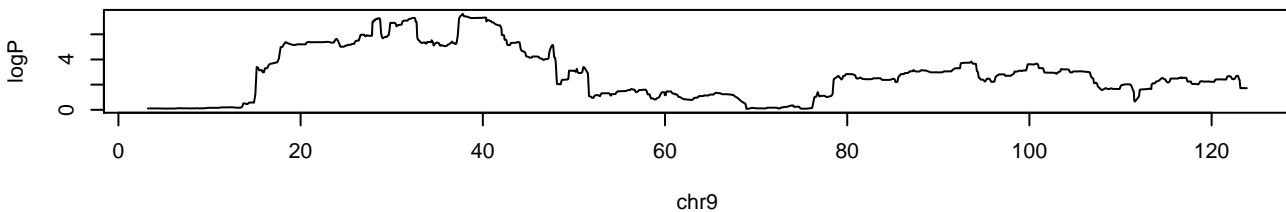
APC.SB3.total chr7 17549173 5.5 0.006



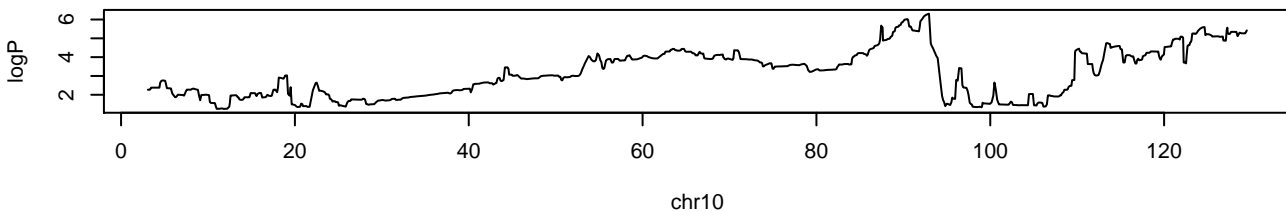
APC.SB3.total chr8 27740088 5.53 0.004



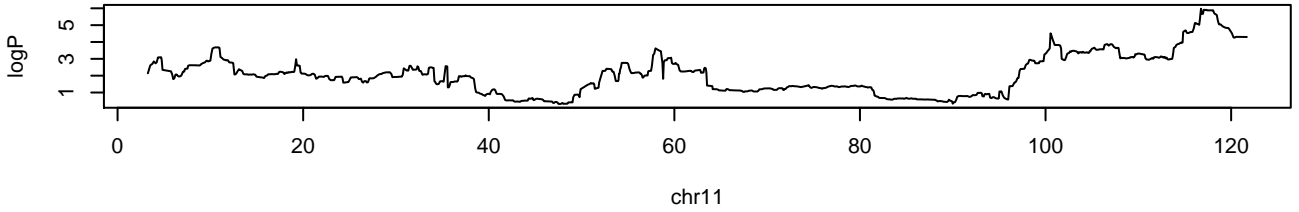
APC.SB3.total chr9 37731457 7.64 0



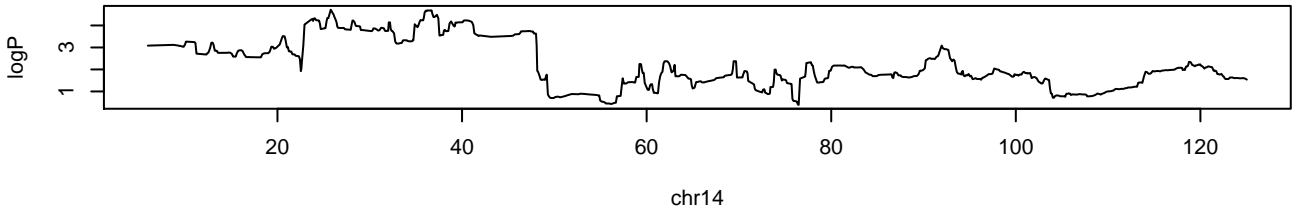
APC.SB3.total chr10 92911282 6.31 0



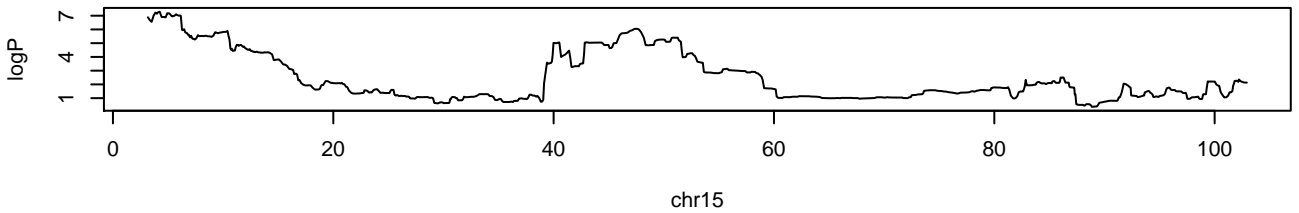
APC.SB3.total chr11 116717107 5.98 0



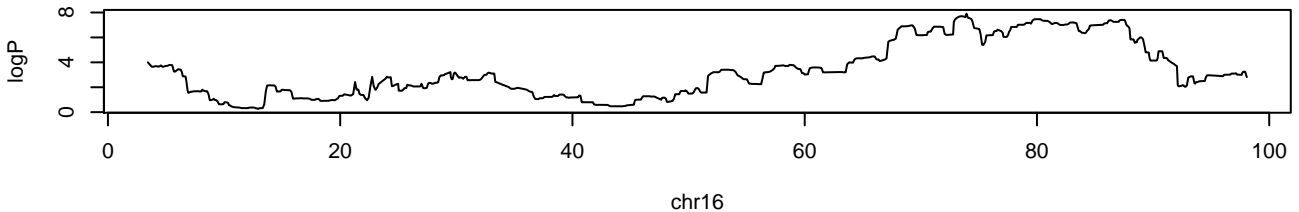
APC.SB3.total chr14 25696665 4.72 0.036



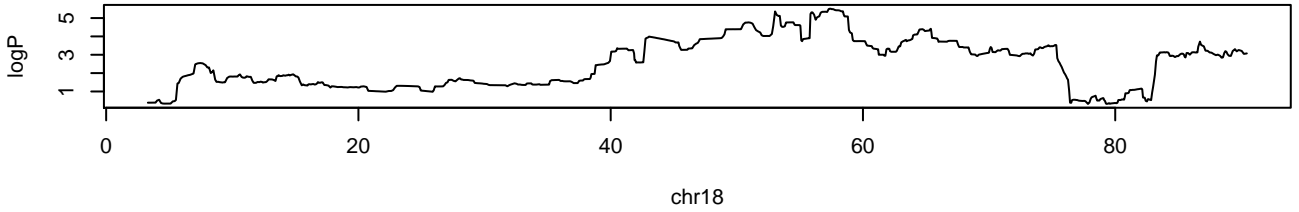
APC.SB3.total chr15 4169766 7.29 0



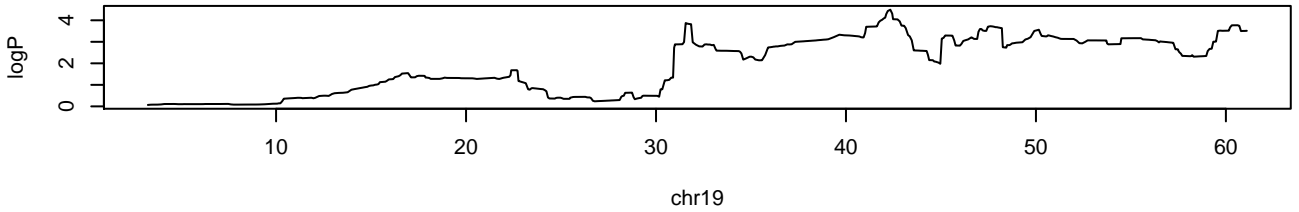
APC.SB3.total chr16 73902550 7.9 0



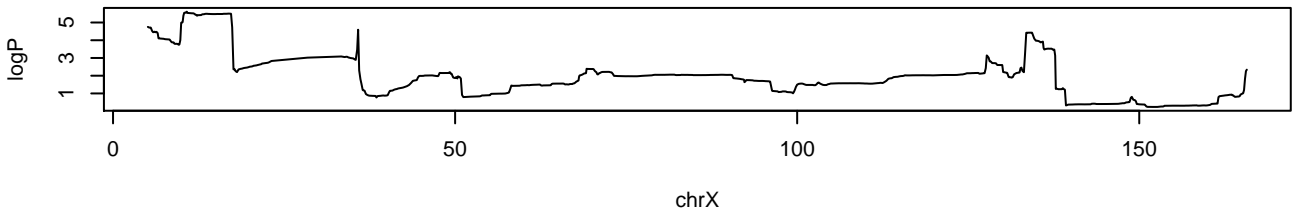
APC.SB3.total chr18 57346551 5.51 0.004



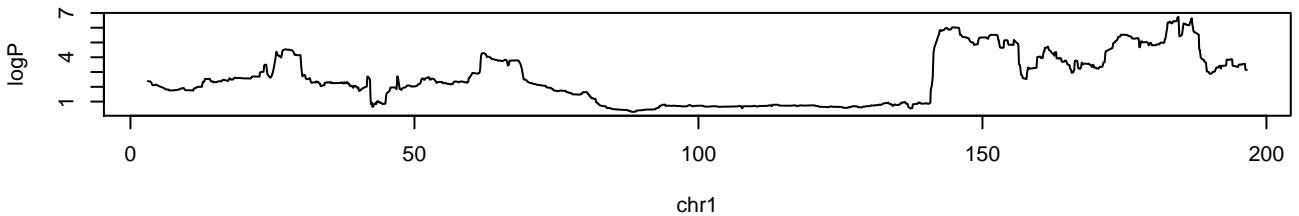
APC.SB3.total chr19 42271497 4.49 0.052



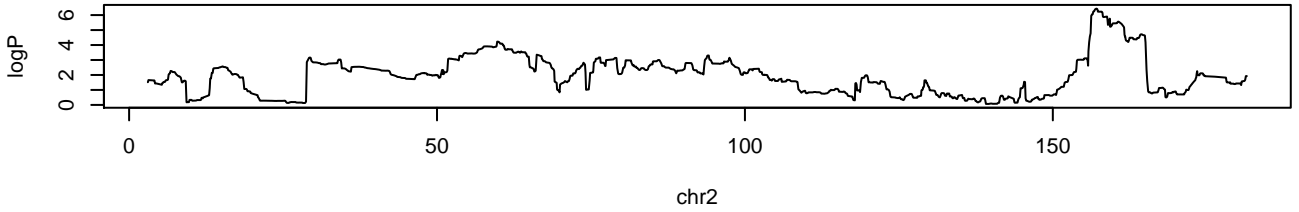
APC.SB3.total chrX 10718419 5.61 0.004



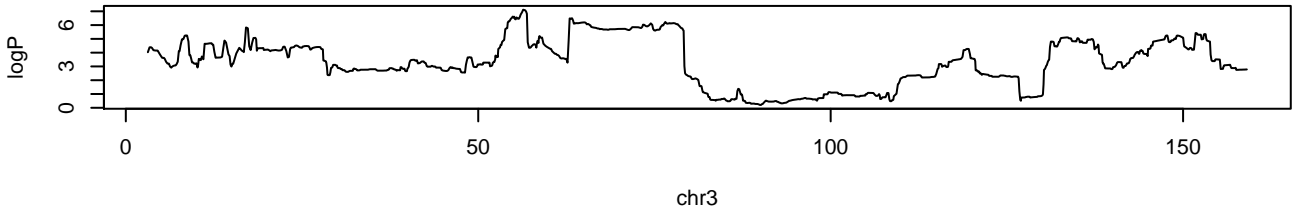
APC.Total chr1 184444297 6.75 0



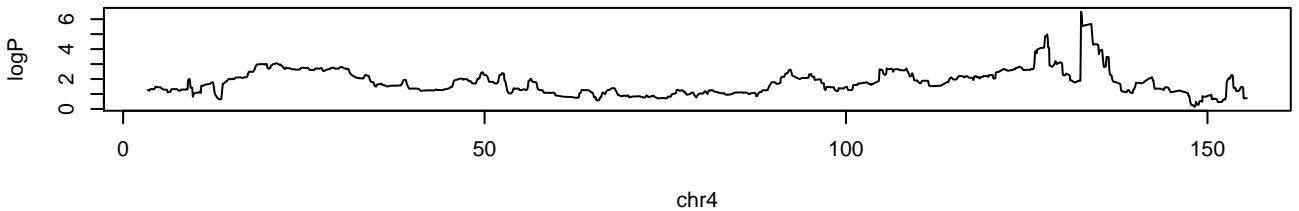
APC.Total chr2 157117350 6.43 0



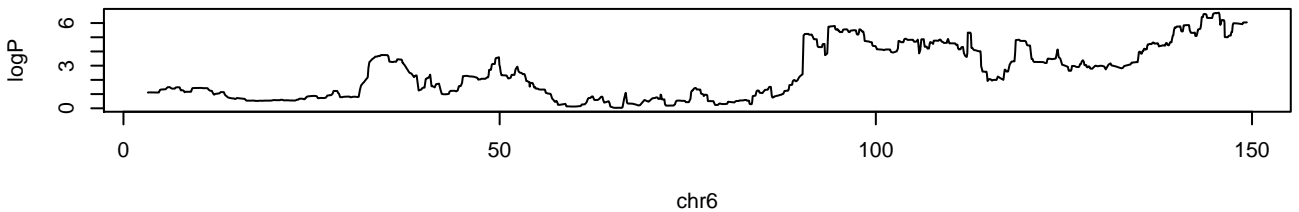
APC.Total chr3 56270215 7.11 0



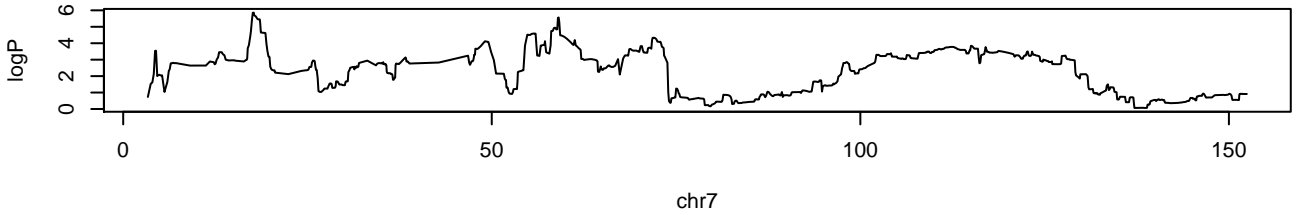
APC.Total chr4 132492566 6.5 0



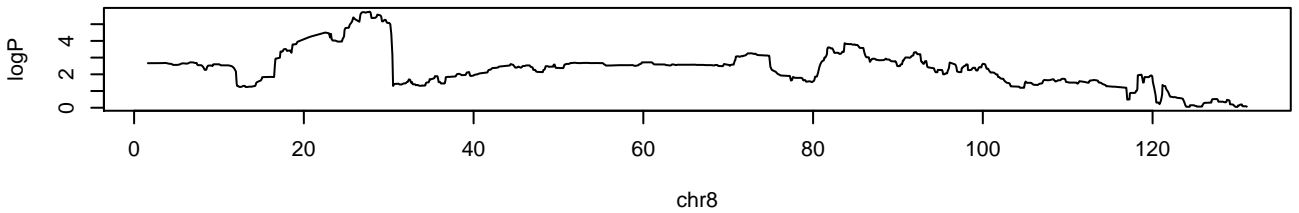
APC.Total chr6 145571424 6.73 0



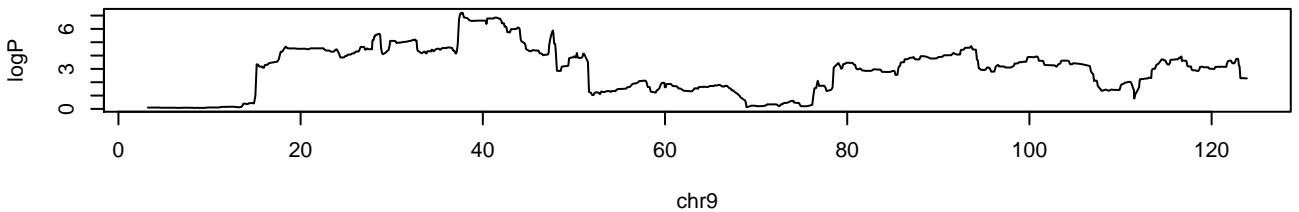
APC.Total chr7 17715315 5.86 0.002



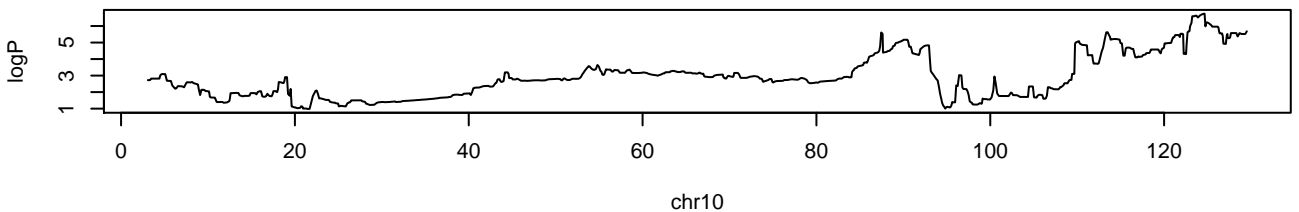
APC.Total chr8 27740088 5.75 0.002



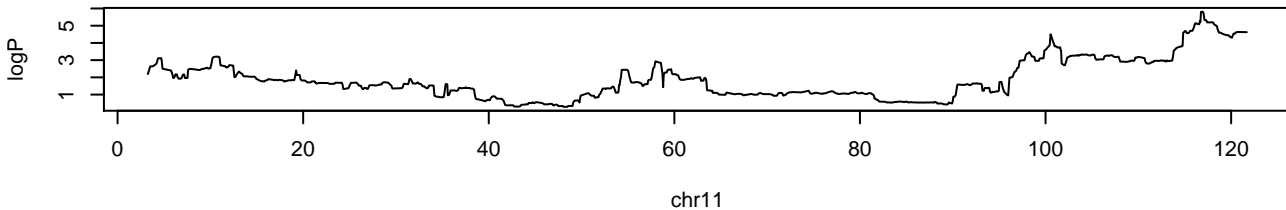
APC.Total chr9 37731457 7.21 0



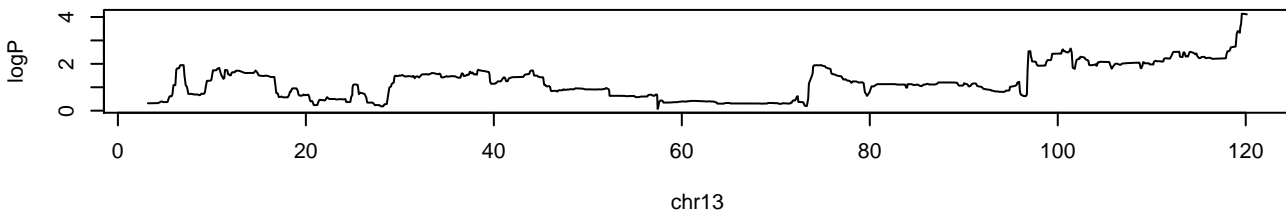
APC.Total chr10 124620255 6.75 0



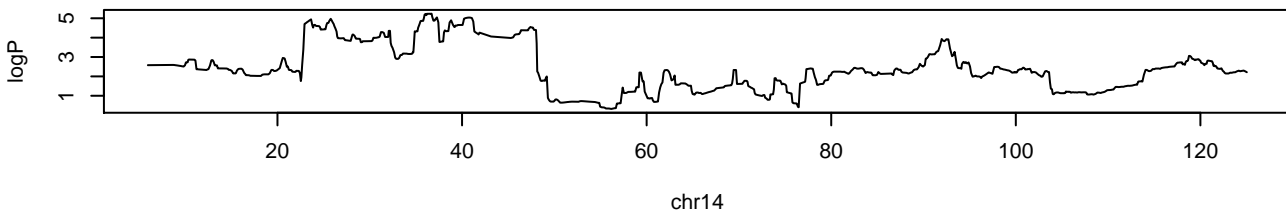
APC.Total chr11 116814109 5.81 0.002



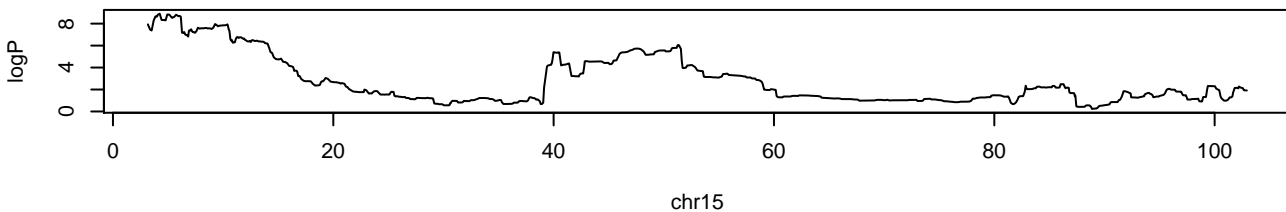
APC.Total chr13 119563140 4.14 0.052



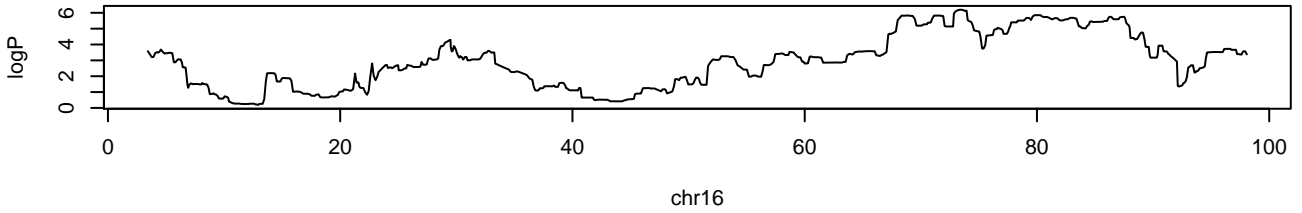
APC.Total chr14 36681627 5.23 0.006



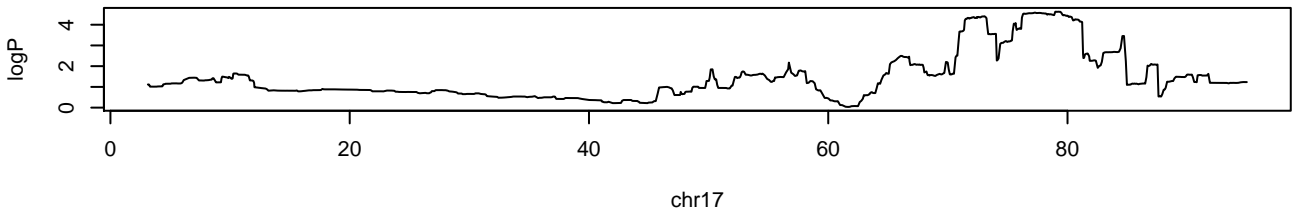
APC.Total chr15 4169766 8.9 0



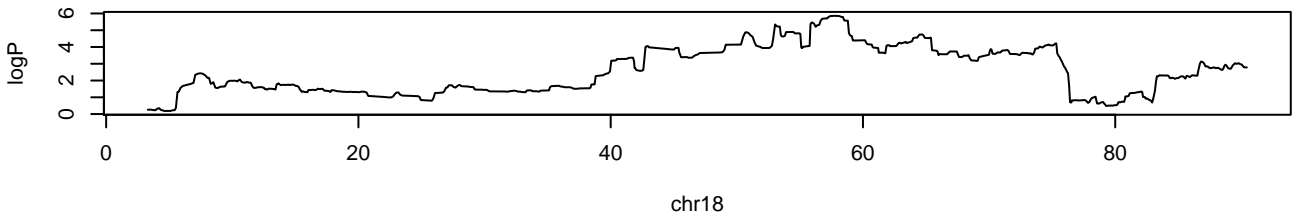
APC.Total chr16 73290236 6.2 0



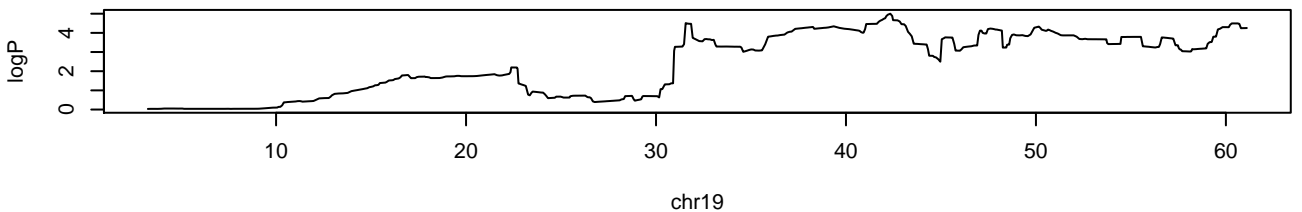
APC.Total chr17 79224106 4.63 0.022



APC.Total chr18 57703231 5.87 0.002



APC.Total chr19 42271497 5 0.012



APC.Total chrX 16925629 5.53 0.002

