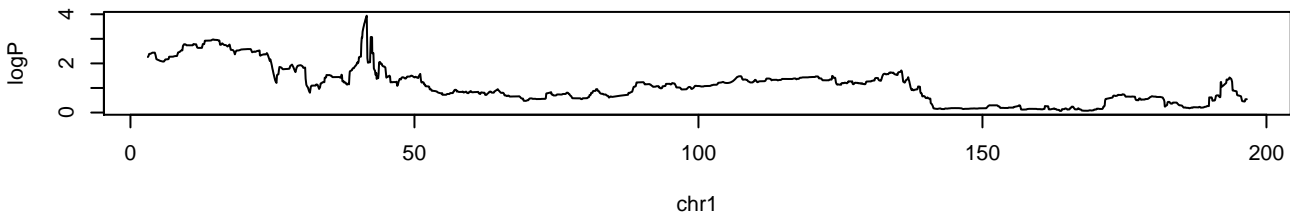
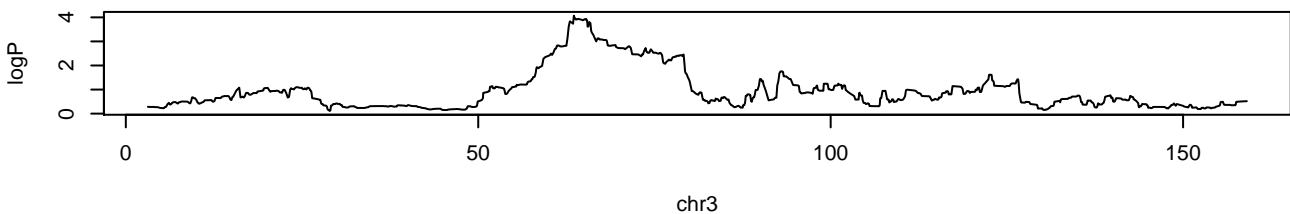


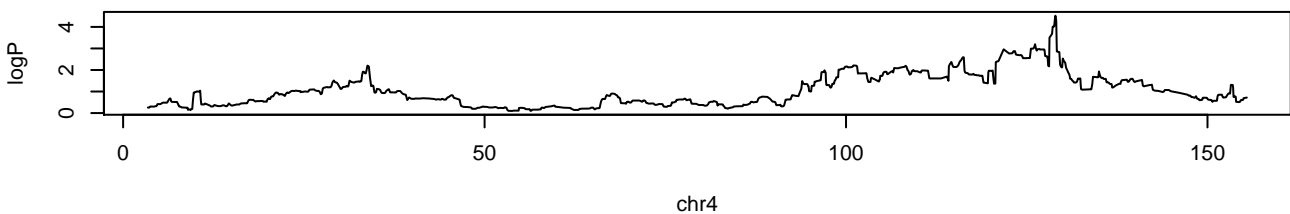
APC.Colon.1.2 chr1 41548410 3.94 0.078



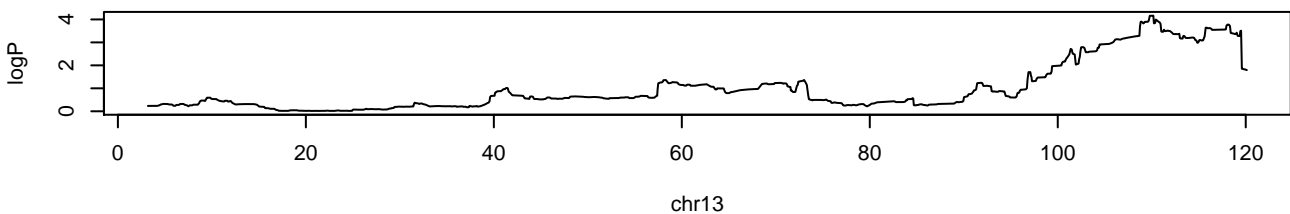
APC.Colon.1.2 chr3 63525950 4.07 0.058



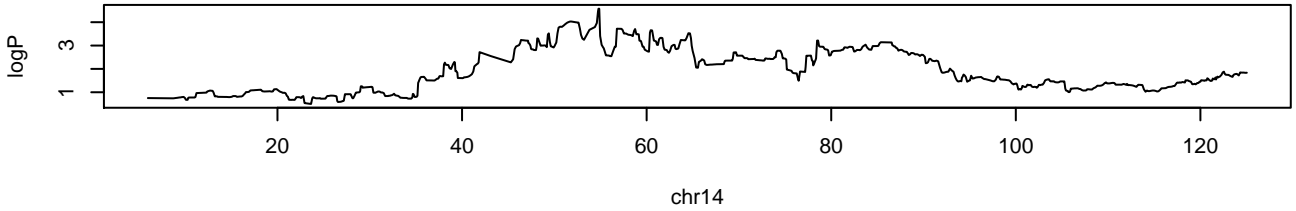
APC.Colon.1.2 chr4 128898346 4.52 0.022



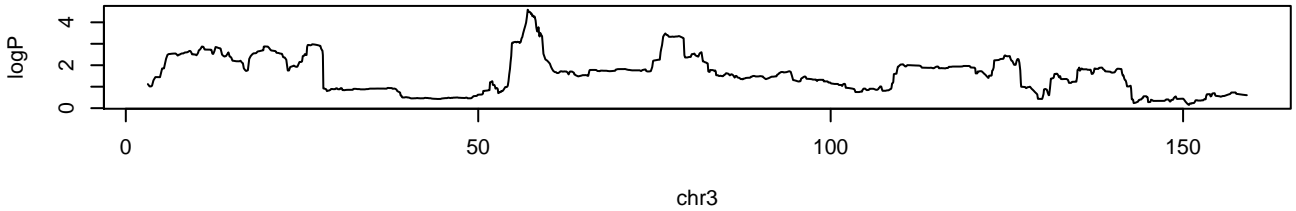
APC.Colon.1.2 chr13 110101879 4.16 0.048



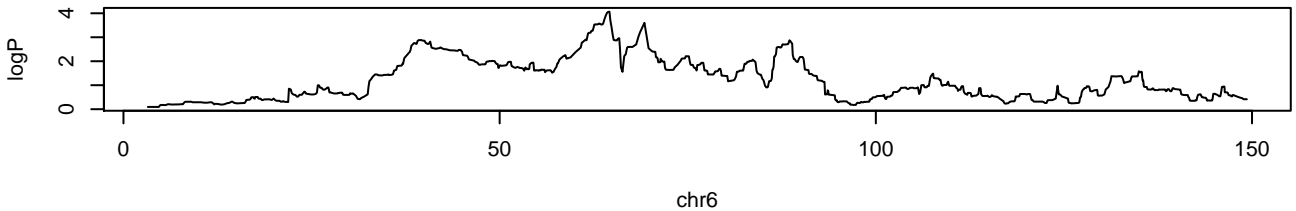
APC.Colon.1.2 chr14 54772473 4.58 0.018



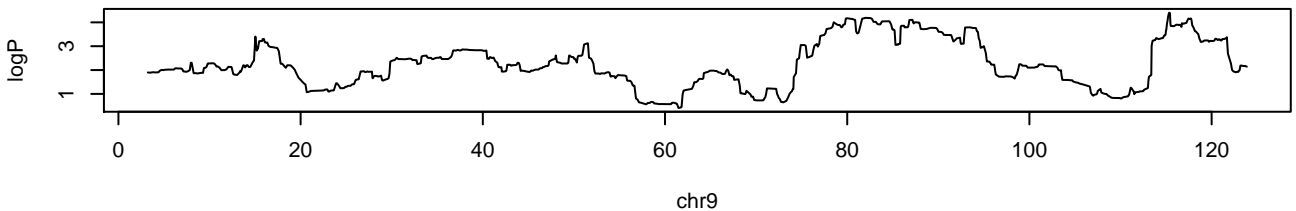
APC.Colon.1 chr3 56968087 4.59 0.022



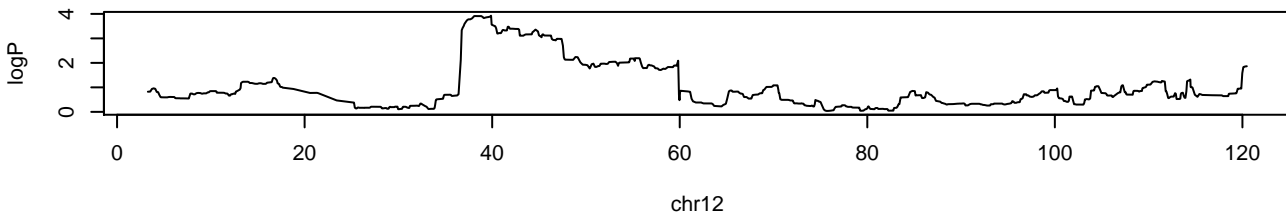
APC.Colon.1 chr6 64569182 4.06 0.062



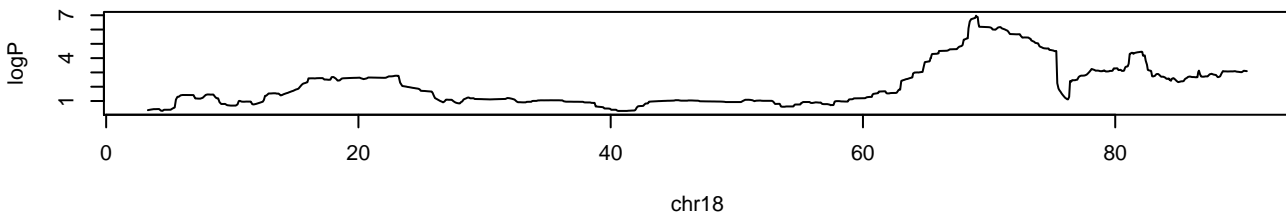
APC.Colon.1 chr9 115311912 4.4 0.034



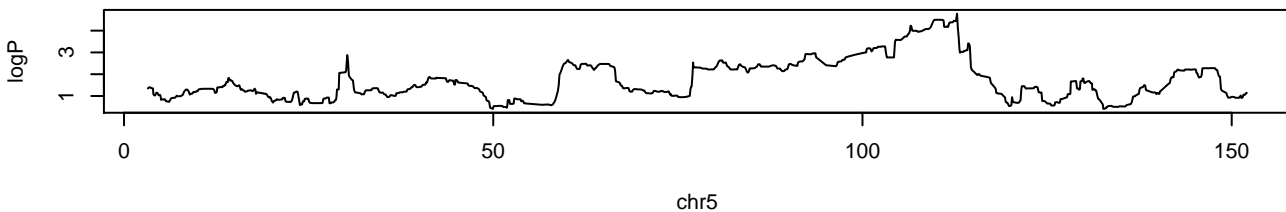
APC.Colon.1 chr12 39864243 3.93 0.082



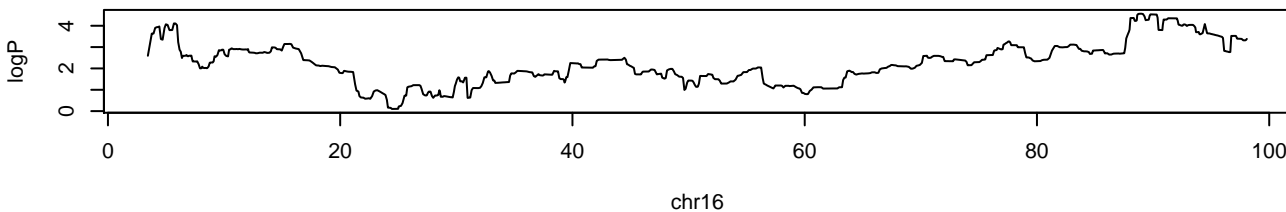
APC.Colon.1 chr18 68929407 6.97 0



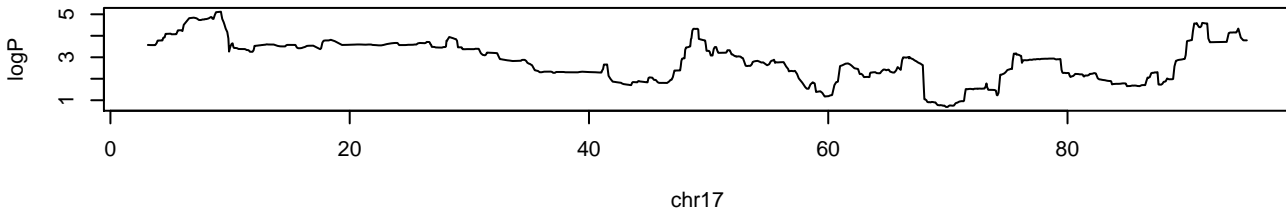
APC.Colon.2.3 chr5 112758753 4.78 0.014



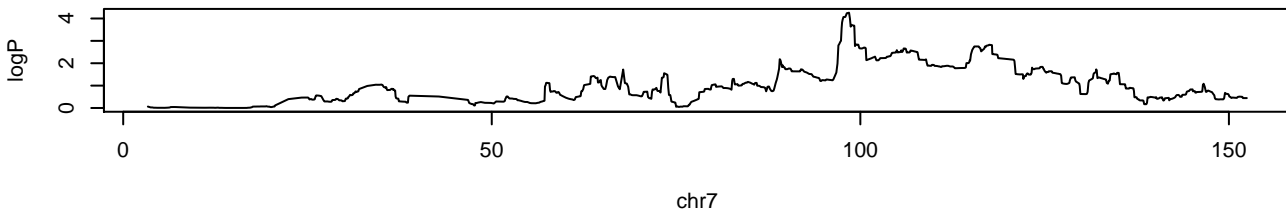
APC.Colon.2.3 chr16 88899579 4.56 0.022



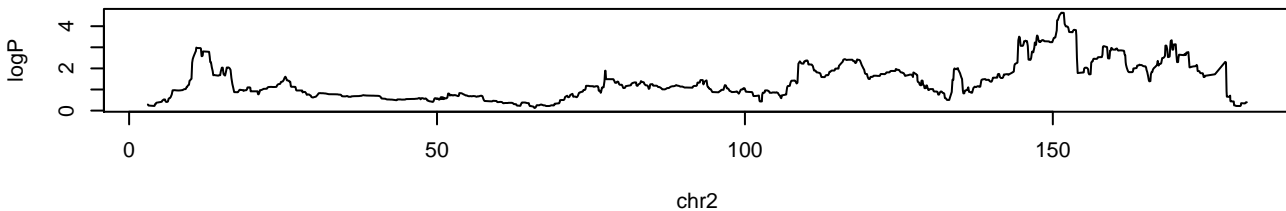
APC.Colon.2.3 chr17 9211303 5.12 0.002



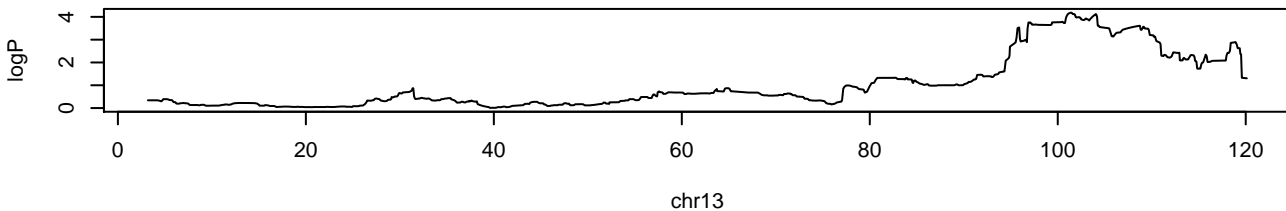
APC.Colon.3 chr7 98405271 4.26 0.04



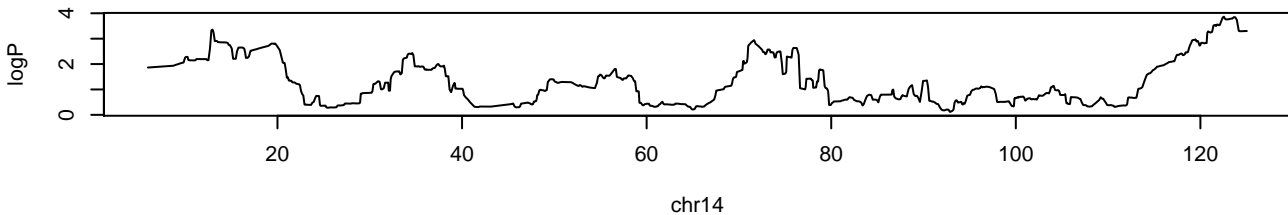
APC.Colon.total chr2 151351209 4.64 0.026



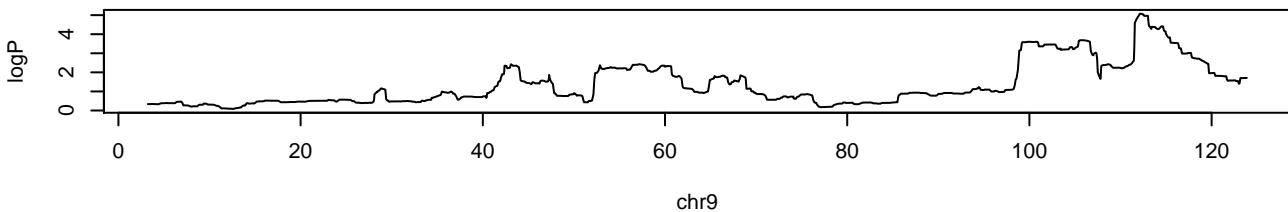
APC.Colon.total chr13 101309944 4.18 0.044



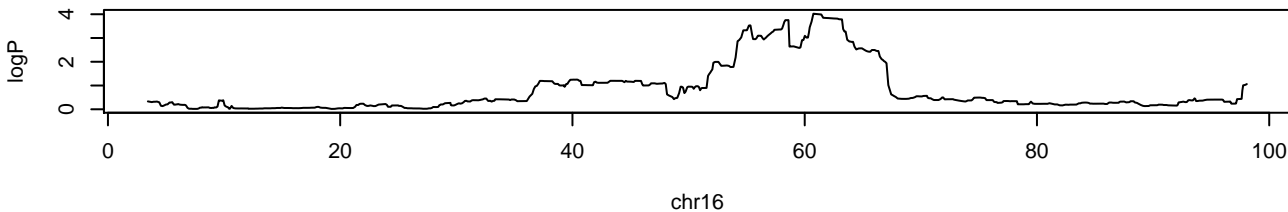
APC.Colon.total chr14 122496552 3.86 0.078



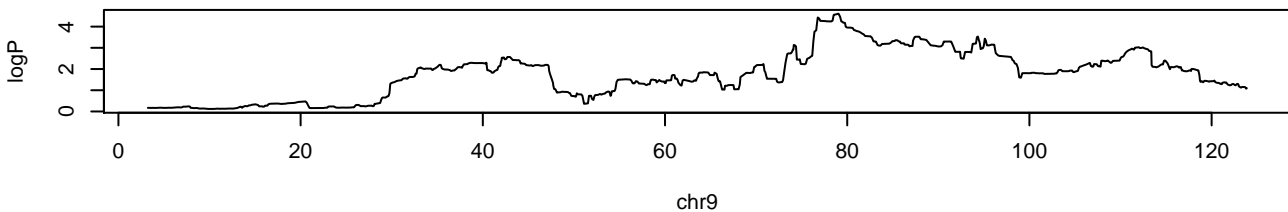
APC.SB1.1.2 chr9 112117851 5.07 0.012



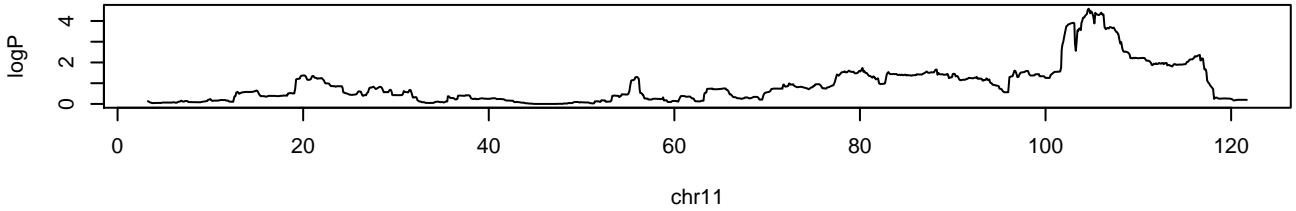
APC.SB1.1.2 chr16 60679826 4.02 0.078



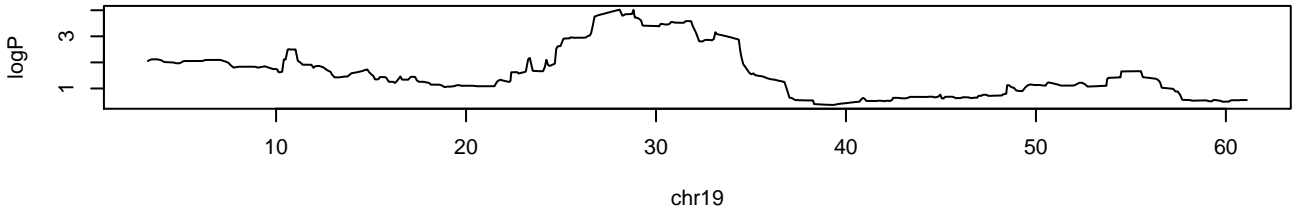
APC.SB1.1 chr9 78998524 4.61 0.032



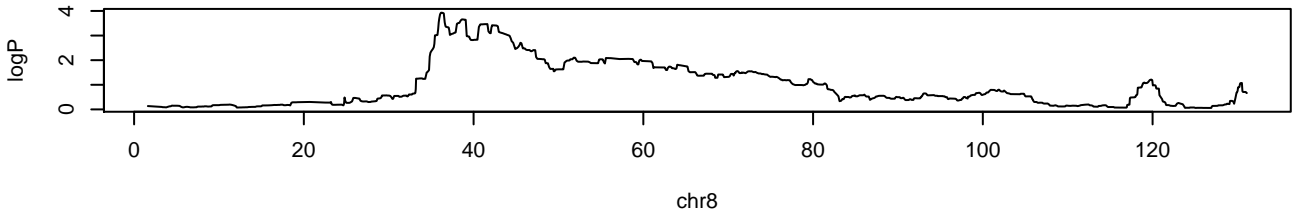
APC.SB1.1 chr11 104613986 4.59 0.034



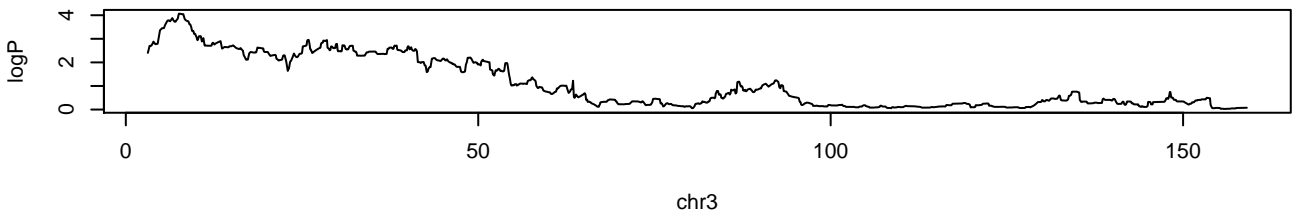
APC.SB1.1 chr19 28036289 4.02 0.094



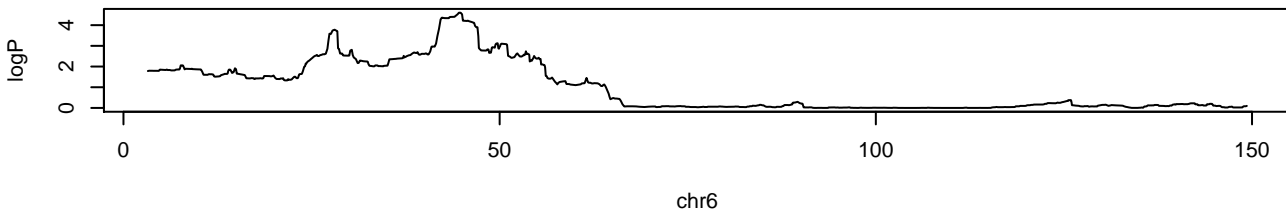
APC.SB1.2.3 chr8 36196931 3.93 0.068



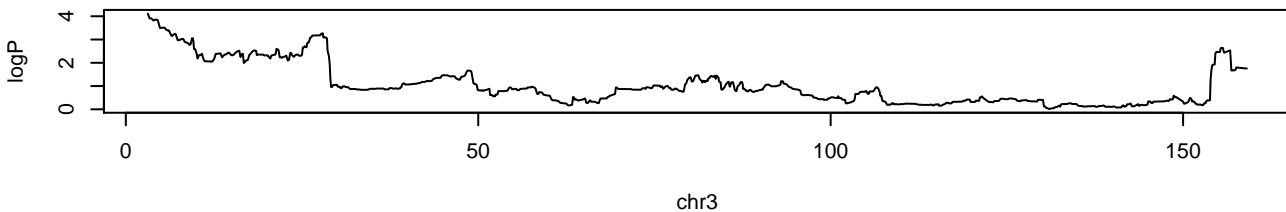
APC.SB1.total chr3 7571387 4.06 0.07



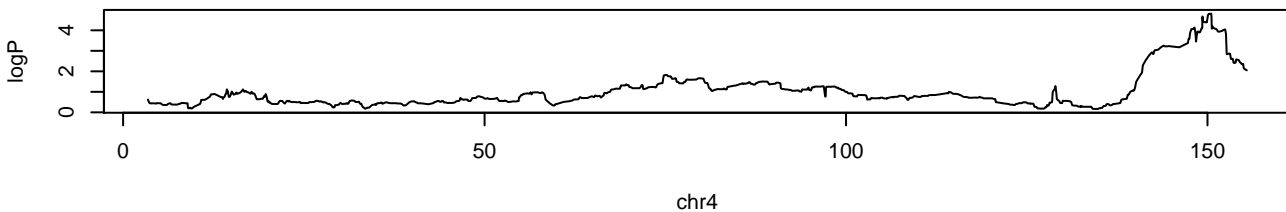
APC.SB1.total chr6 44501927 4.6 0.028



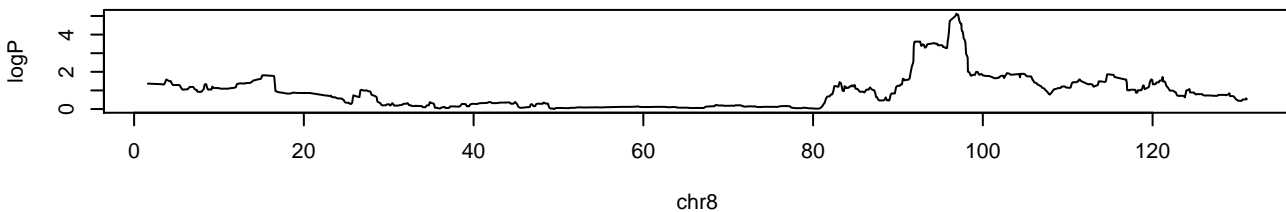
APC.SB2.1.2 chr3 3032787 4.11 0.054



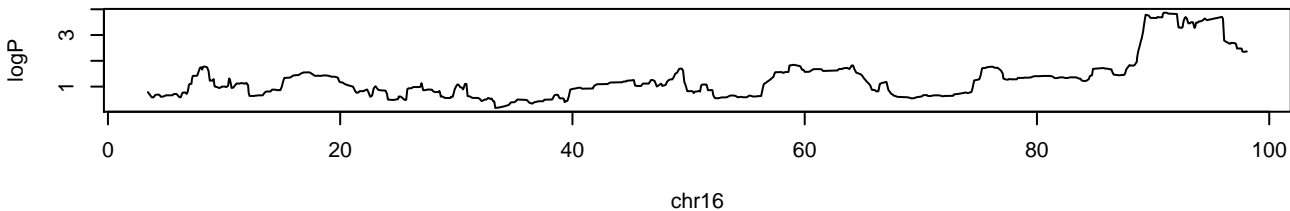
APC.SB2.1.2 chr4 150502271 4.81 0.008



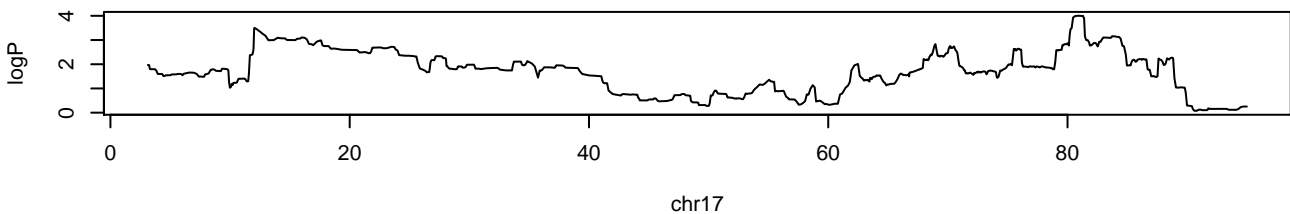
APC.SB2.1.2 chr8 96834717 5.12 0.004



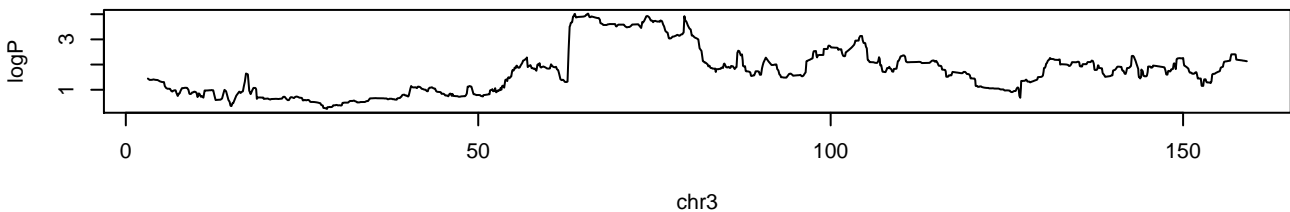
APC.SB2.1.2 chr16 90996120 3.87 0.088



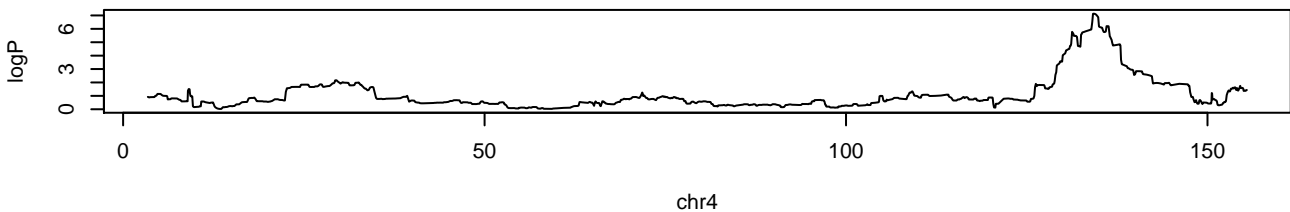
APC.SB2.1.2 chr17 80905340 4 0.066



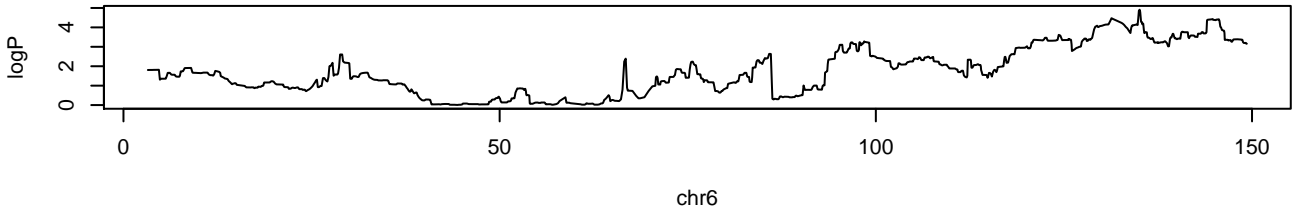
APC.SB2.3 chr3 65546372 4.02 0.076



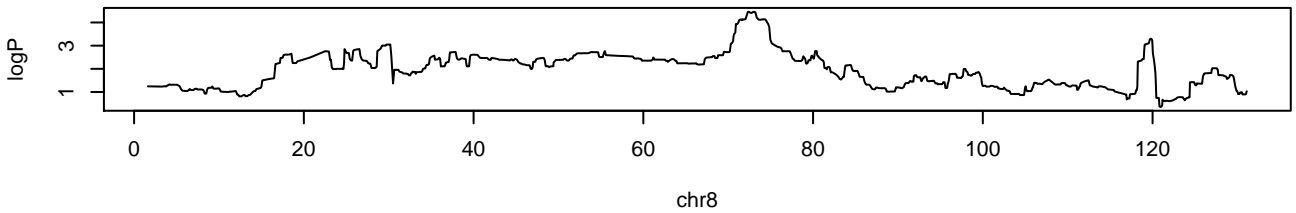
APC.SB2.3 chr4 134190812 7.13 0



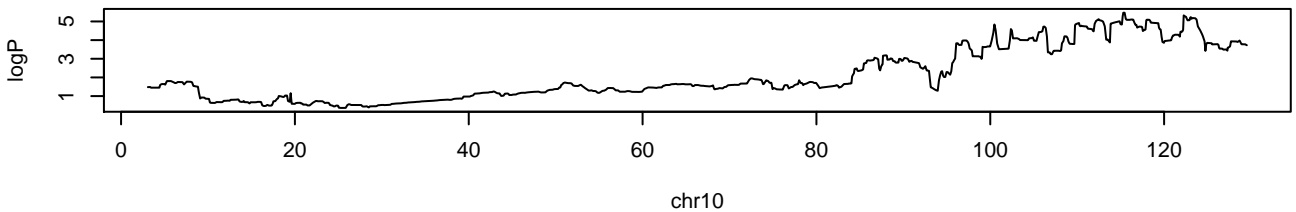
APC.SB2.3 chr6 135036358 4.91 0.014



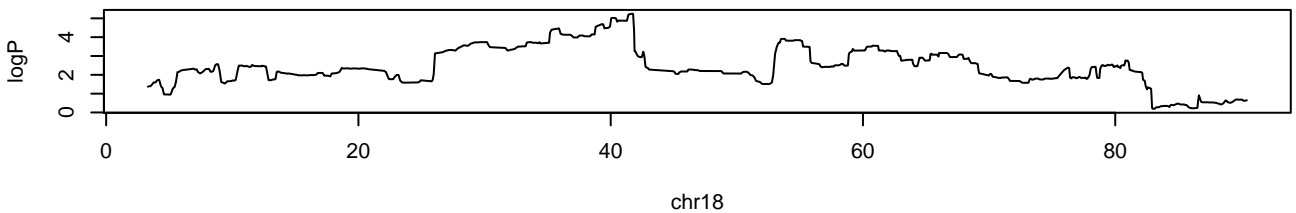
APC.SB2.3 chr8 72981452 4.46 0.034



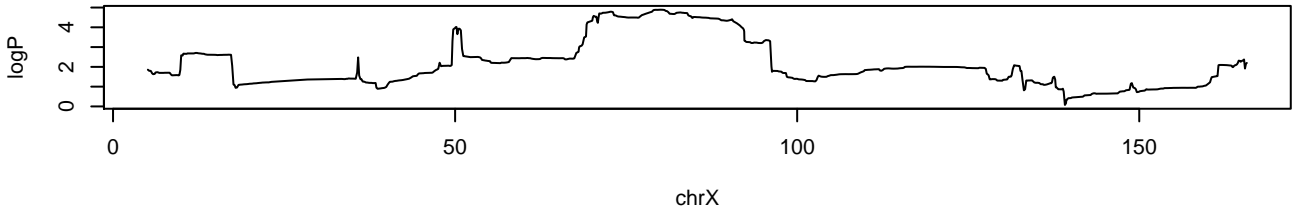
APC.SB2.3 chr10 115287307 5.47 0.008



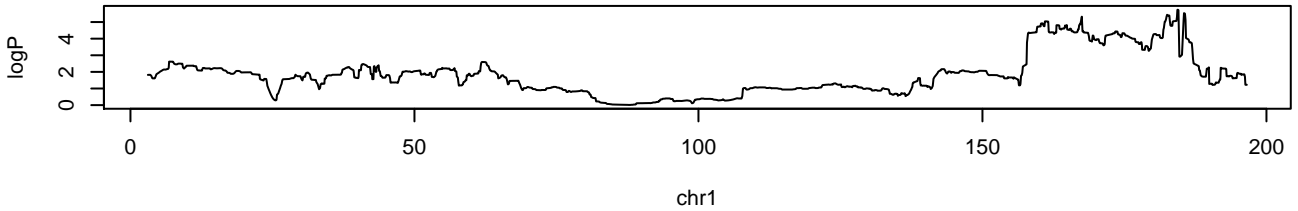
APC.SB2.3 chr18 41651851 5.25 0.01



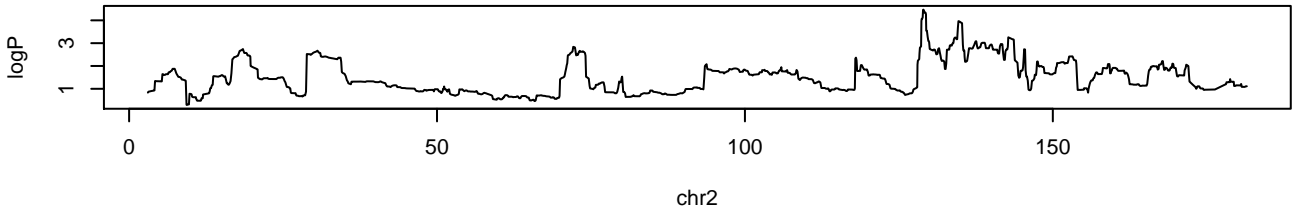
APC.SB2.3 chrX 79933156 4.89 0.014



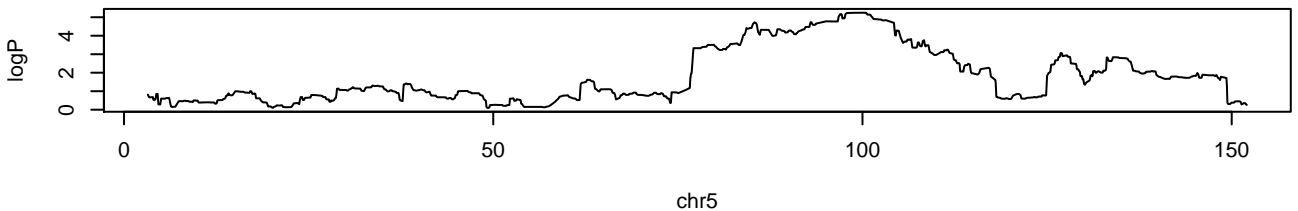
APC.SB2.total chr1 184368460 5.74 0.004



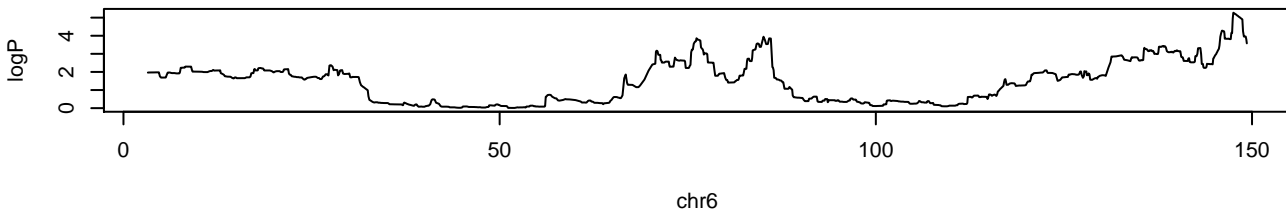
APC.SB2.total chr2 128954880 4.47 0.03



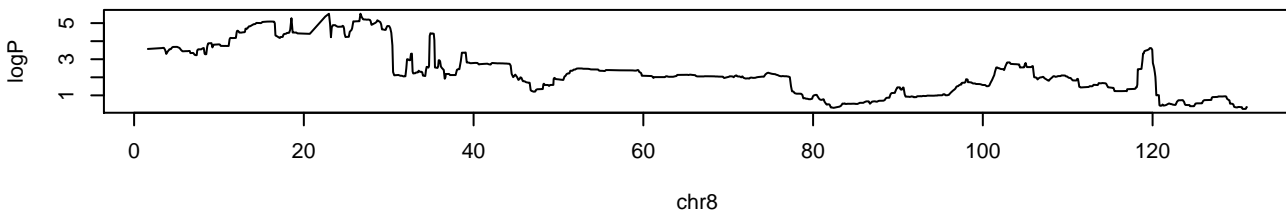
APC.SB2.total chr5 99852472 5.24 0.01



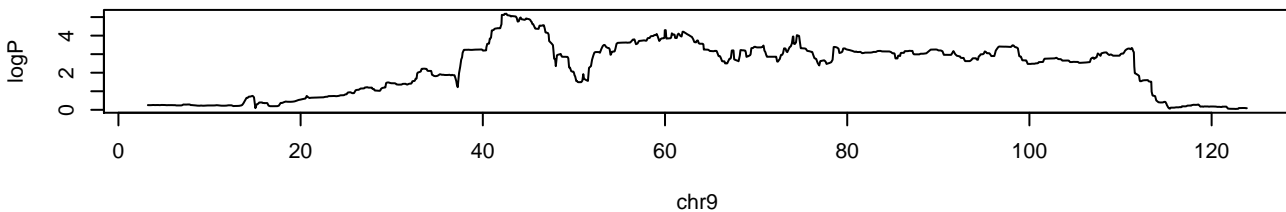
APC.SB2.total chr6 147487843 5.27 0.01



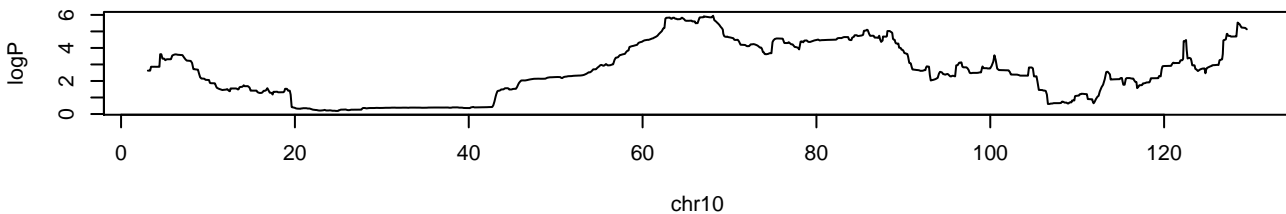
APC.SB2.total chr8 26616159 5.52 0.008



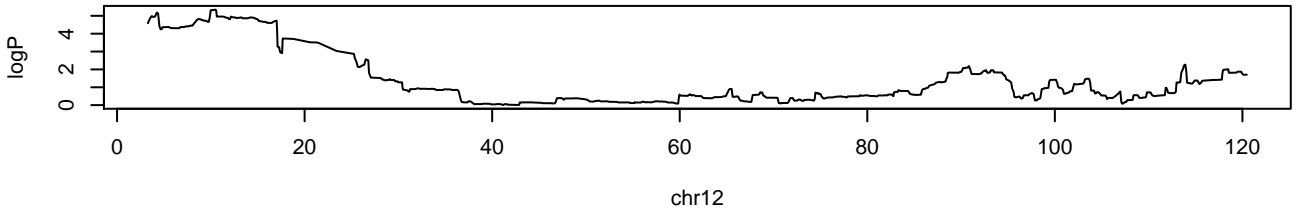
APC.SB2.total chr9 42555020 5.18 0.012



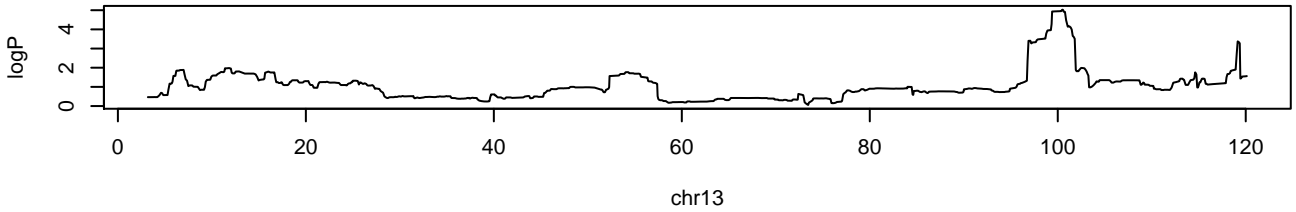
APC.SB2.total chr10 68090641 5.95 0.002



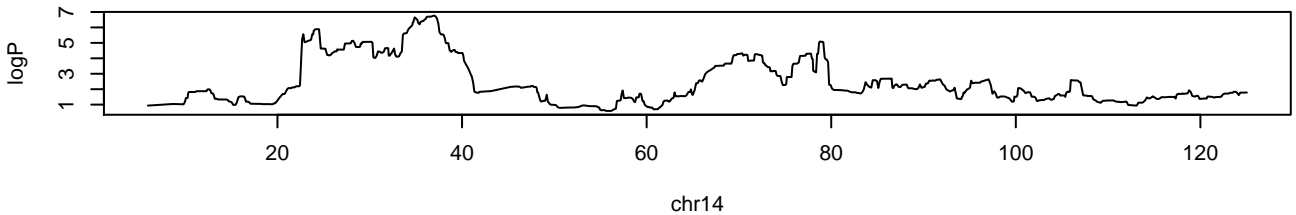
APC.SB2.total chr12 10478999 5.34 0.01



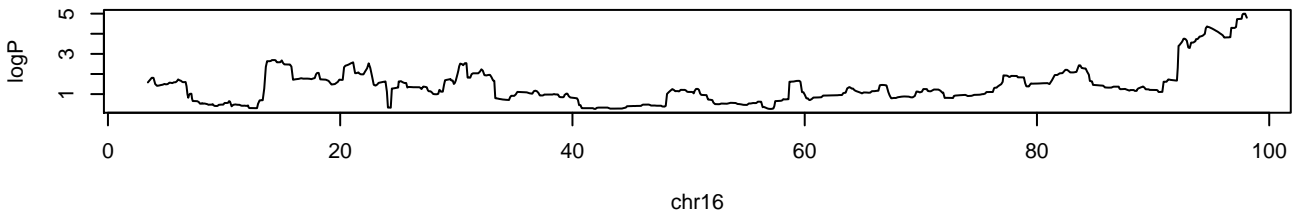
APC.SB2.total chr13 100435485 5.03 0.016



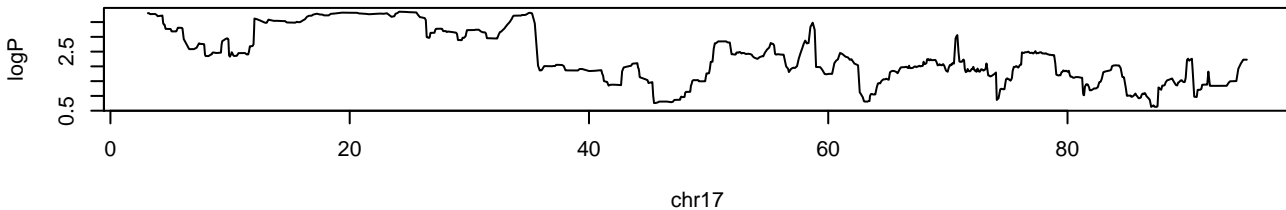
APC.SB2.total chr14 36997133 6.76 0



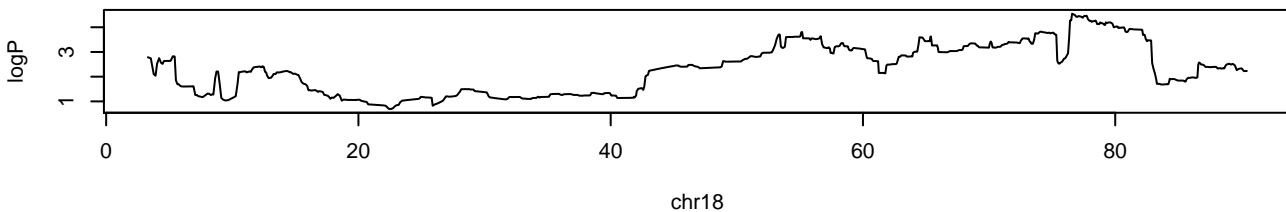
APC.SB2.total chr16 97885983 5 0.018



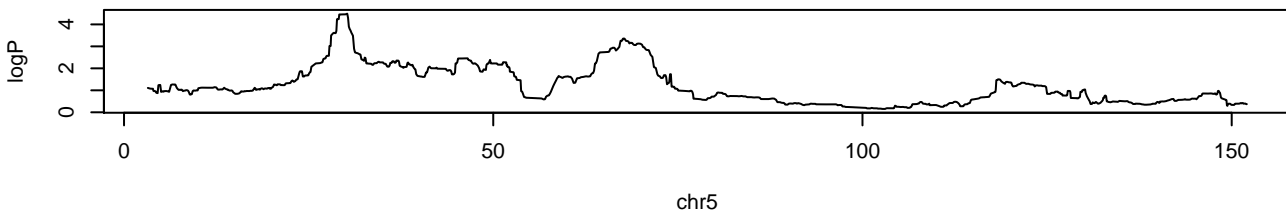
APC.SB2.total chr17 24100234 3.85 0.09



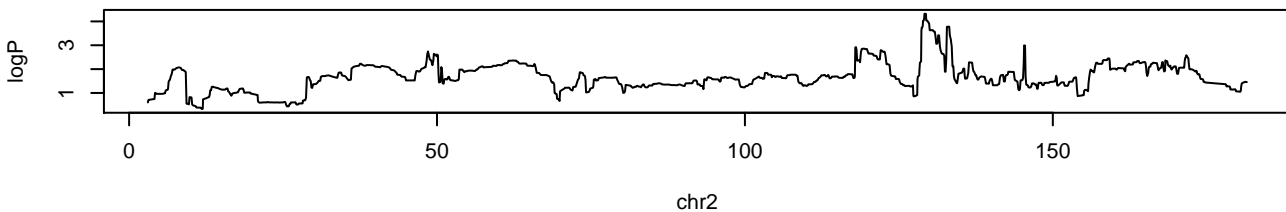
APC.SB2.total chr18 76552287 4.55 0.026



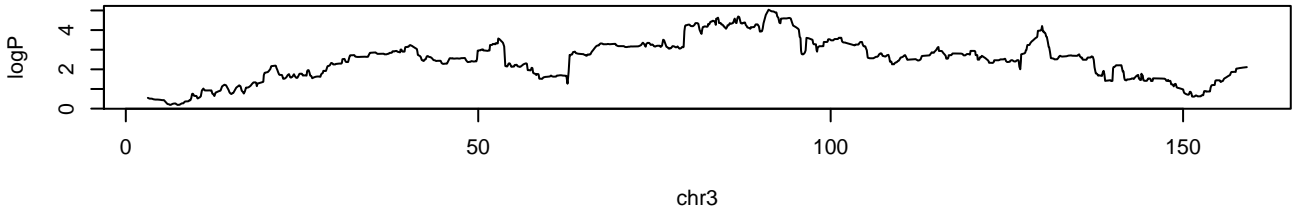
APC.SB3.1 chr5 30177354 4.49 0.036



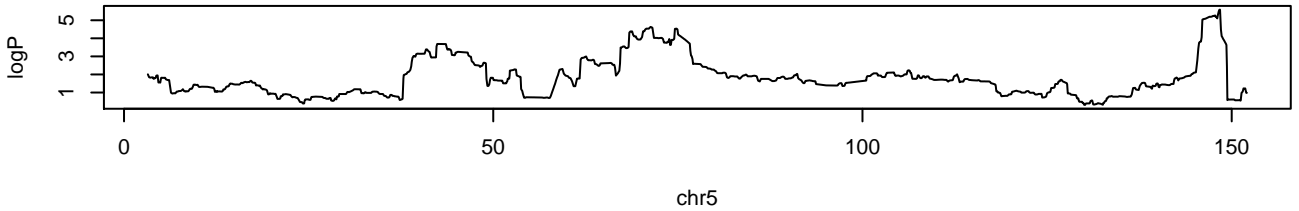
APC.SB3.3 chr2 129300912 4.32 0.042



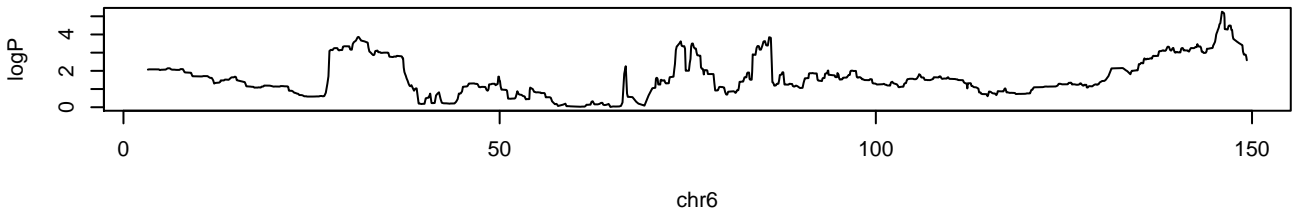
APC.SB3.3 chr3 91071365 5.04 0.008



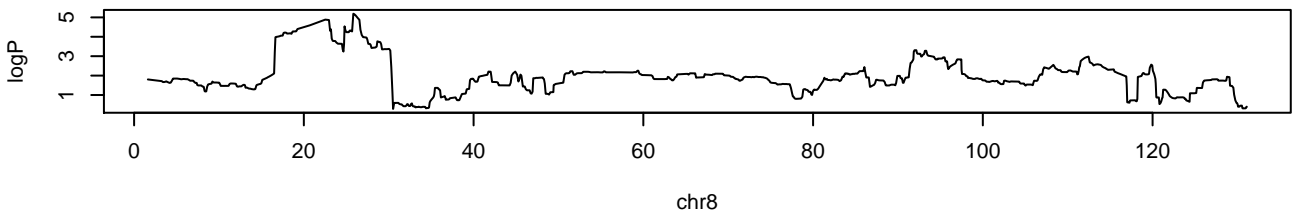
APC.SB3.3 chr5 148385812 5.58 0.002



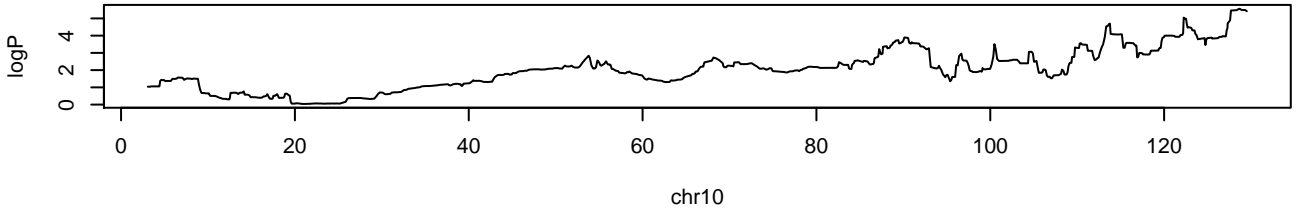
APC.SB3.3 chr6 145956922 5.25 0.006



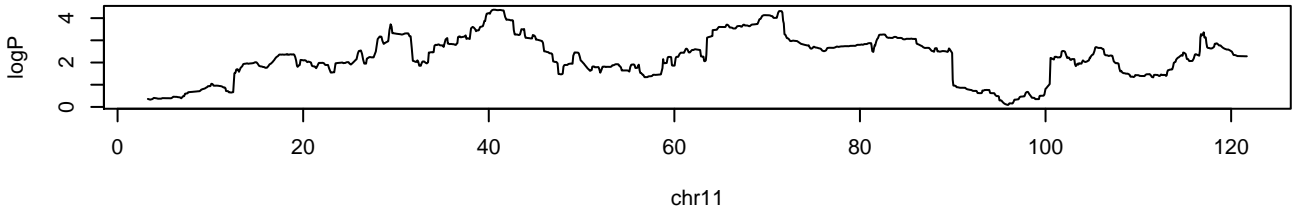
APC.SB3.3 chr8 25760839 5.19 0.006



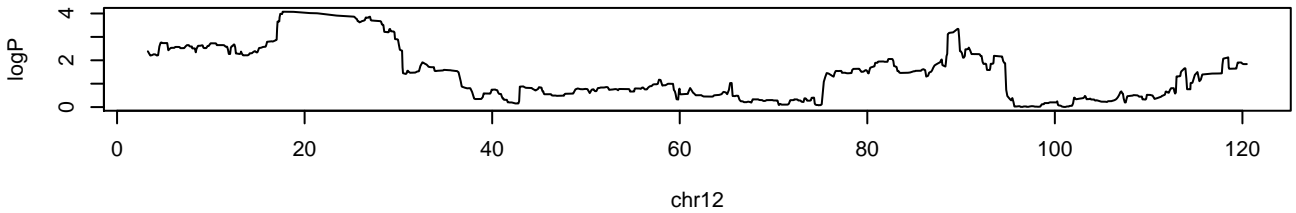
APC.SB3.3 chr10 128555060 5.56 0.002



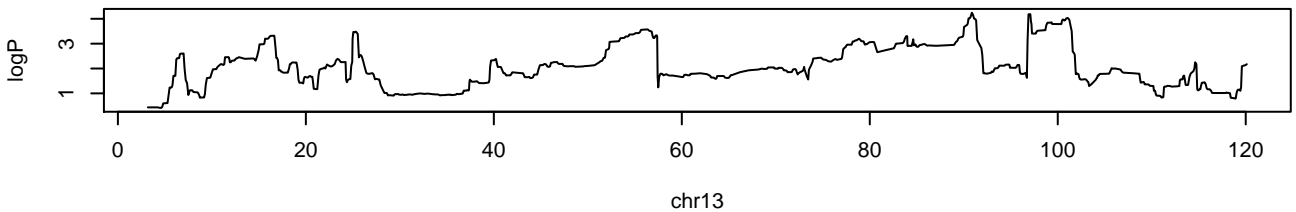
APC.SB3.3 chr11 40463063 4.38 0.04



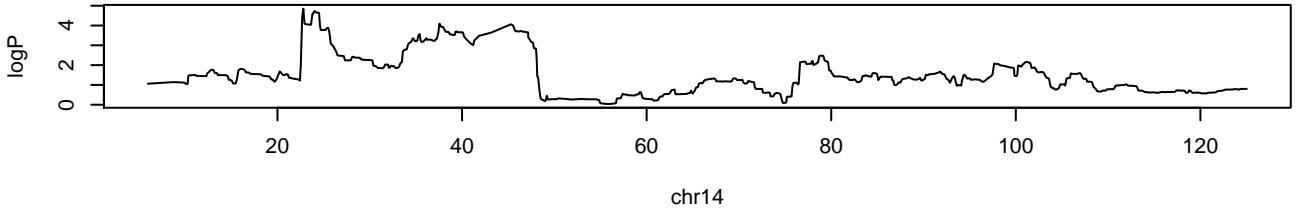
APC.SB3.3 chr12 17640556 4.08 0.056



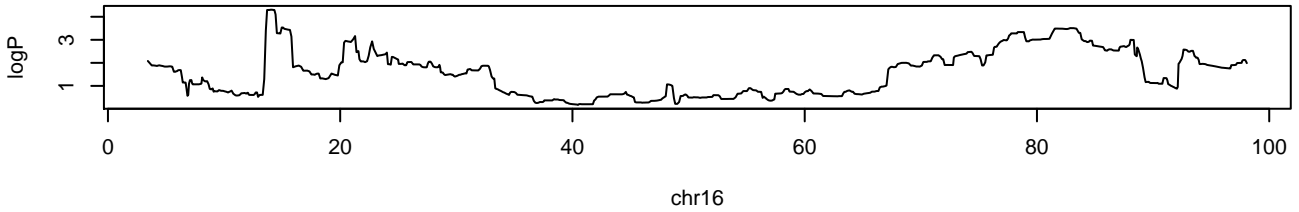
APC.SB3.3 chr13 90797844 4.24 0.046



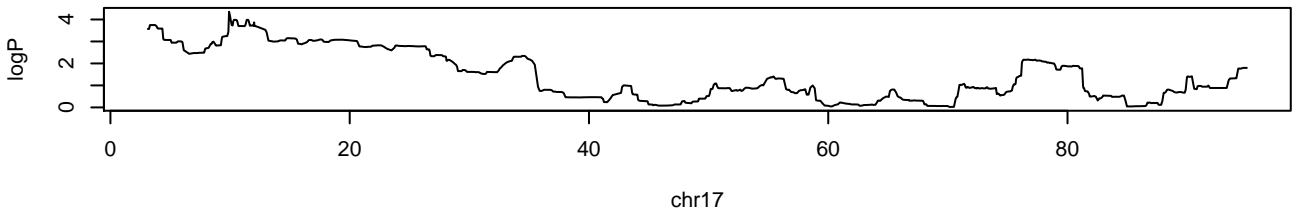
APC.SB3.3 chr14 22743029 4.85 0.014



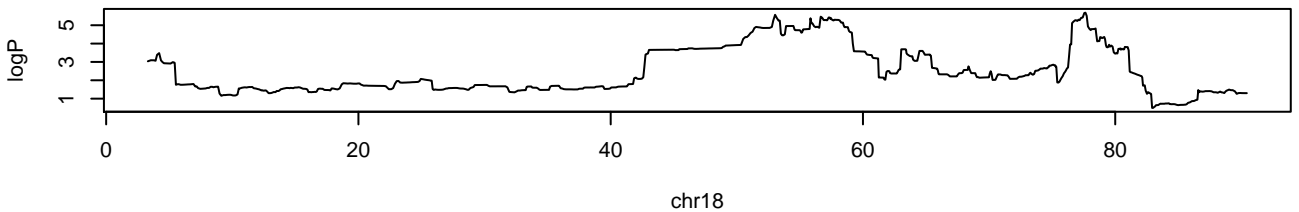
APC.SB3.3 chr16 13985122 4.31 0.042



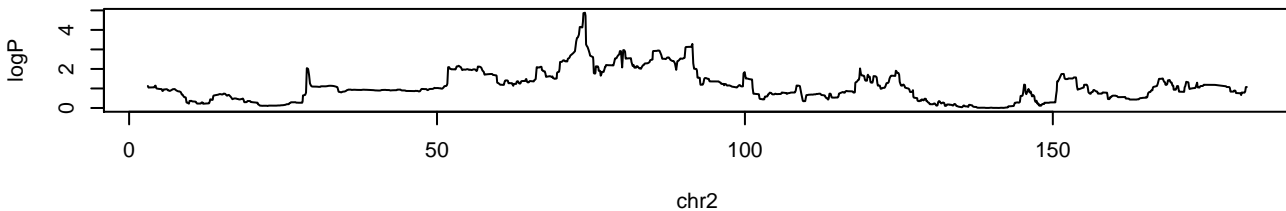
APC.SB3.3 chr17 9884732 4.35 0.042



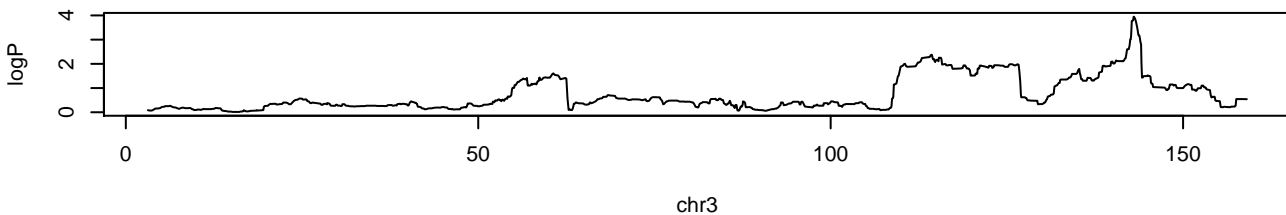
APC.SB3.3 chr18 77594841 5.68 0.002



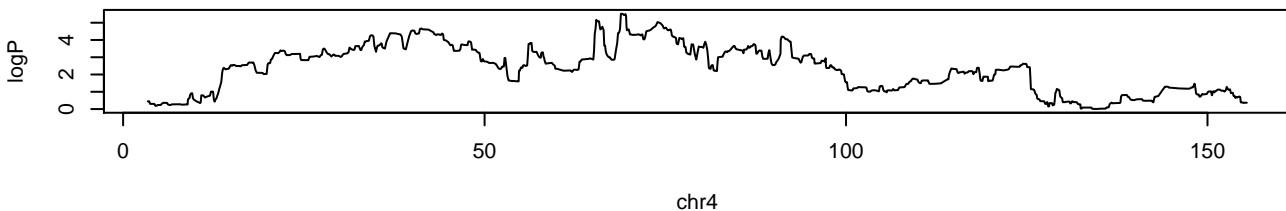
APC.SB3.total chr2 73977632 4.88 0.01



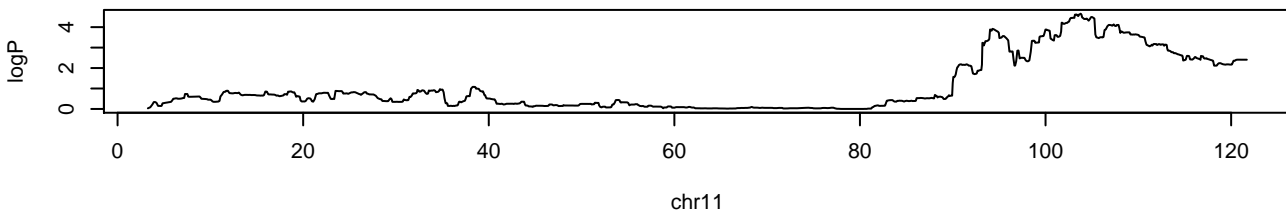
APC.SB3.total chr3 142956498 3.95 0.068



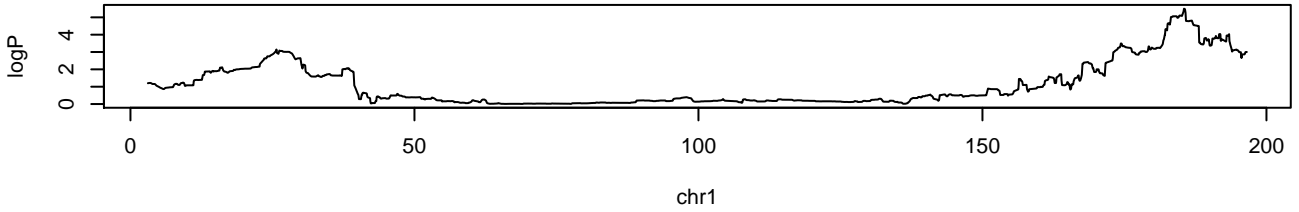
APC.SB3.total chr4 68920660 5.52 0.002



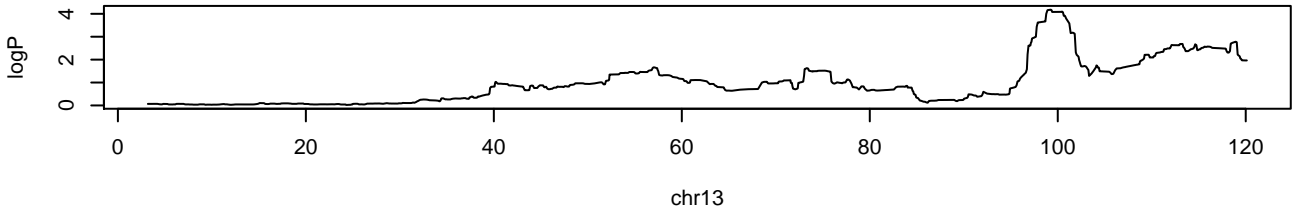
APC.SB3.total chr11 103740328 4.66 0.014



APC.Total chr1 185454591 5.5 0



APC.Total chr13 99220347 4.18 0.054



APC.Total chr18 40491058 3.93 0.082

