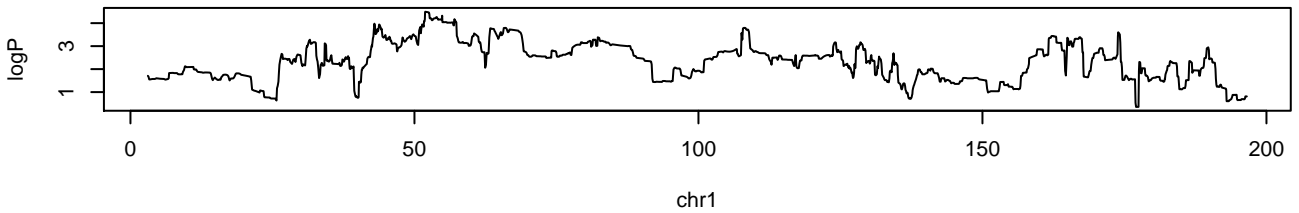
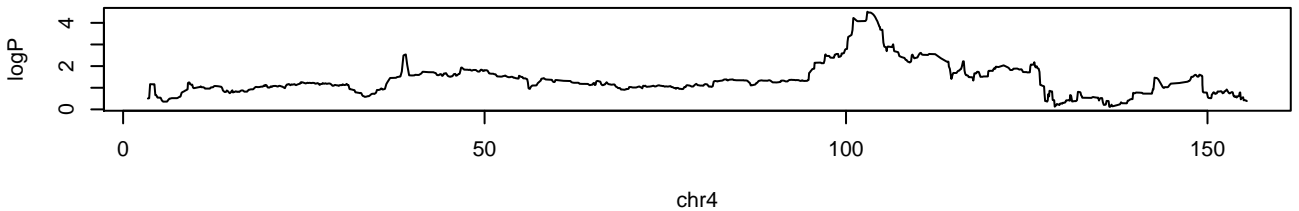


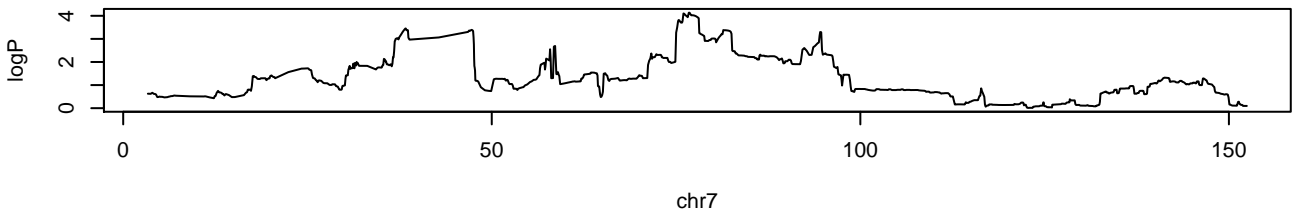
./Im.PCV.weights.norm.500.08102014//APC.Colon.1.2.Im.gscan.RData chr1 51905070 4.49713332311106 0.0



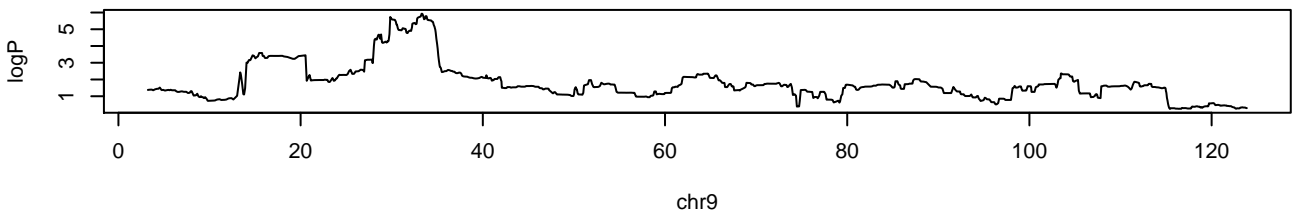
./Im.PCV.weights.norm.500.08102014//APC.Colon.1.2.Im.gscan.RData chr4 102881474 4.51393044114724 0.0



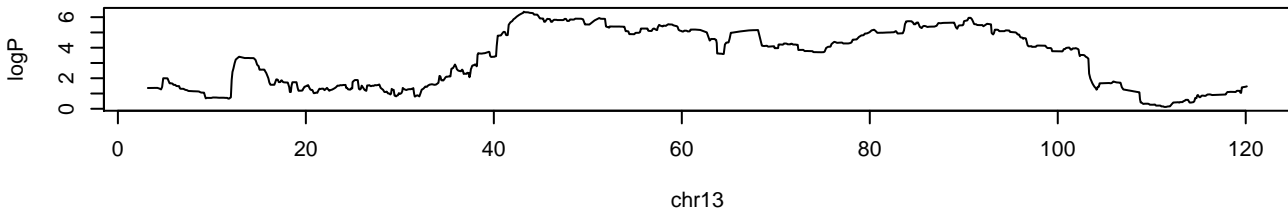
./Im.PCV.weights.norm.500.08102014//APC.Colon.1.2.Im.gscan.RData chr7 76699369 4.13347728479848 0.0



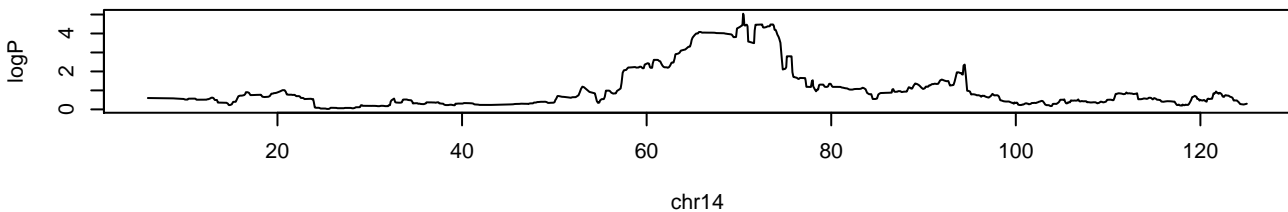
./Im.PCV.weights.norm.500.08102014//APC.Colon.1.2.Im.gscan.RData chr9 33242295 5.92848546584891 0.0



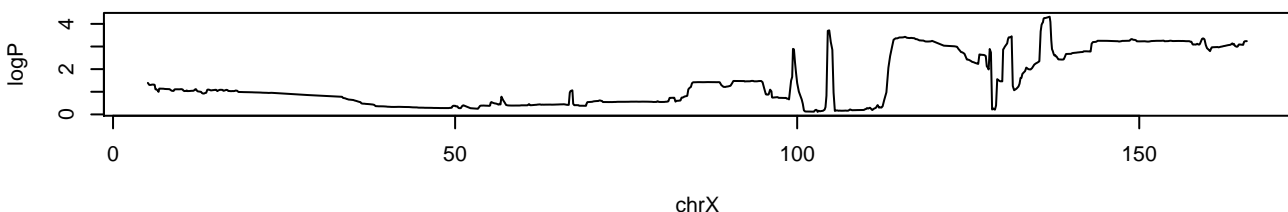
./lm.PCV.weights.norm.500.08102014//APC.Colon.1.2.lm.gscan.RData chr13 43156691 6.35757007492201 0.



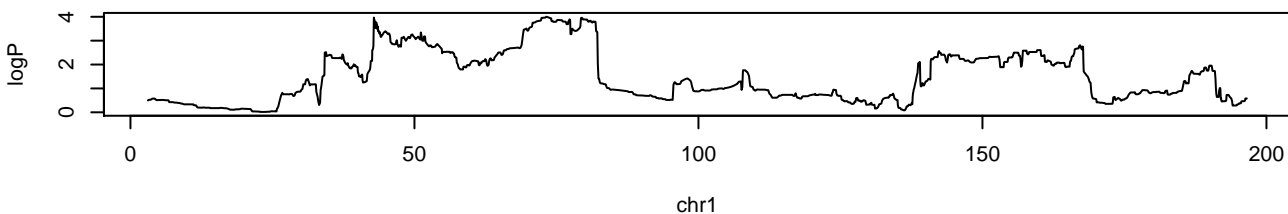
./lm.PCV.weights.norm.500.08102014//APC.Colon.1.2.lm.gscan.RData chr14 70419866 5.04287309285085 0.



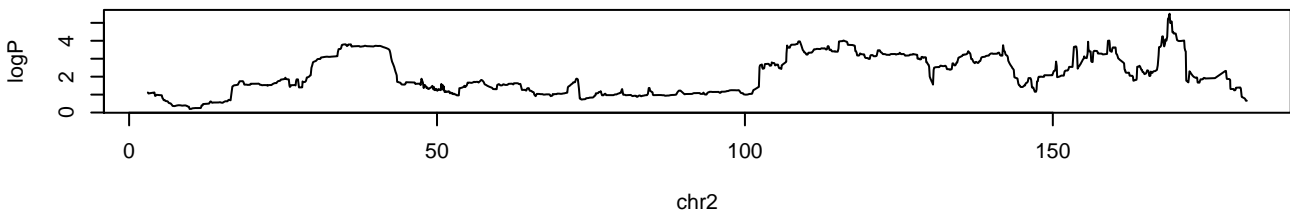
./lm.PCV.weights.norm.500.08102014//APC.Colon.1.2.lm.gscan.RData chrX 136848441 4.31636727685259 0.



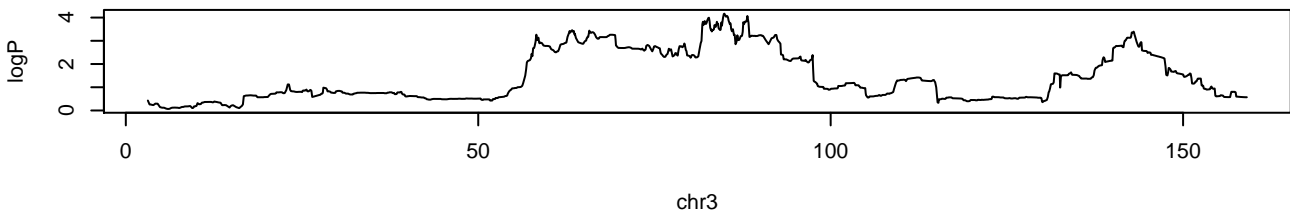
./lm.PCV.weights.norm.500.08102014//APC.Colon.1.lm.gscan.RData chr1 73164961 4.00250309629706 0.0



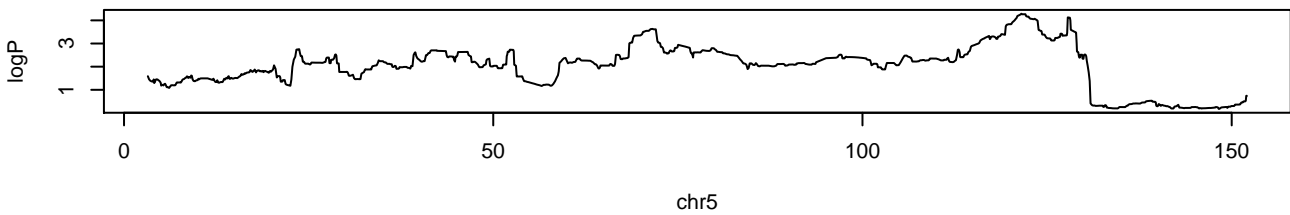
./lm.PCV.weights.norm.500.08102014//APC.Colon.1.lm.gscan.RData chr2 168913685 5.50846879441487 0.0



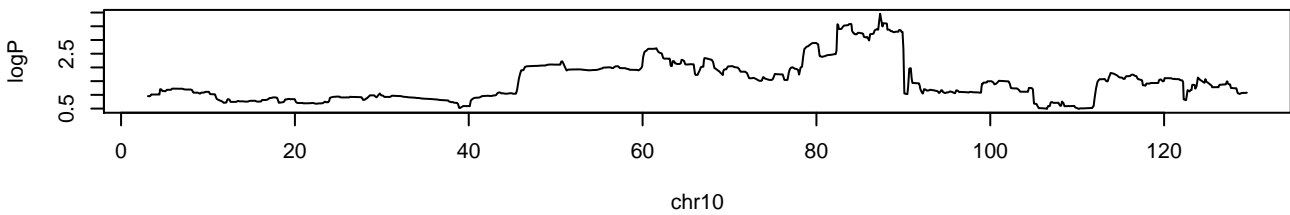
./lm.PCV.weights.norm.500.08102014//APC.Colon.1.lm.gscan.RData chr3 84882626 4.16592884411911 0.0



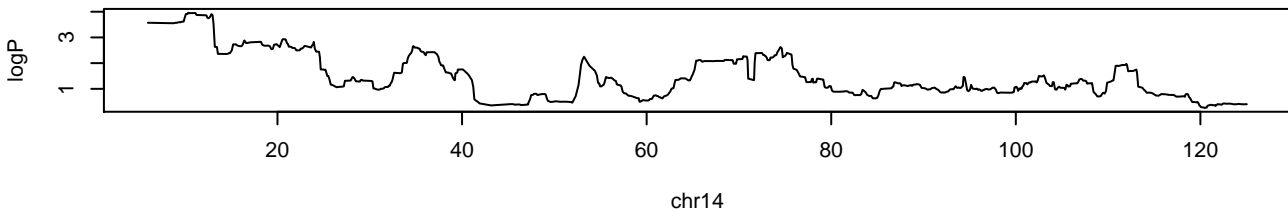
./lm.PCV.weights.norm.500.08102014//APC.Colon.1.lm.gscan.RData chr5 121474834 4.28780100029135 0.0



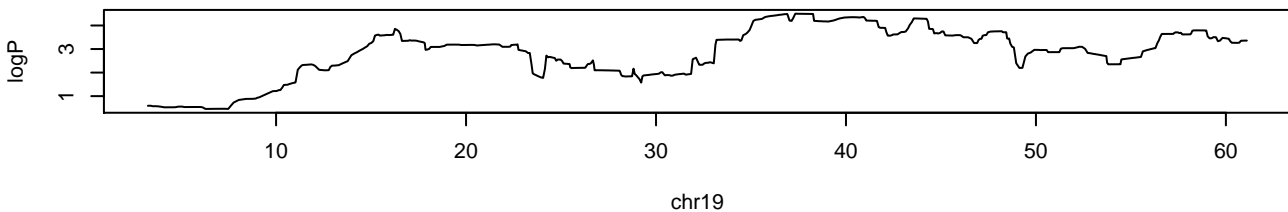
./lm.PCV.weights.norm.500.08102014//APC.Colon.1.lm.gscan.RData chr10 87275529 3.9578827727248 0.0



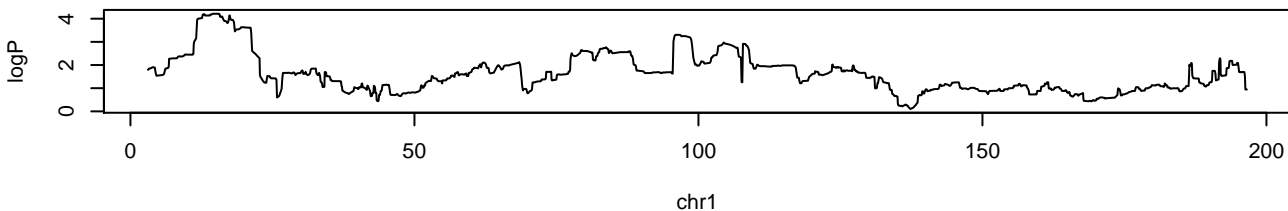
./Im.PCV.weights.norm.500.08102014//APC.Colon.1.Im.gscan.RData chr14 10296603 3.96101030895422 0.0



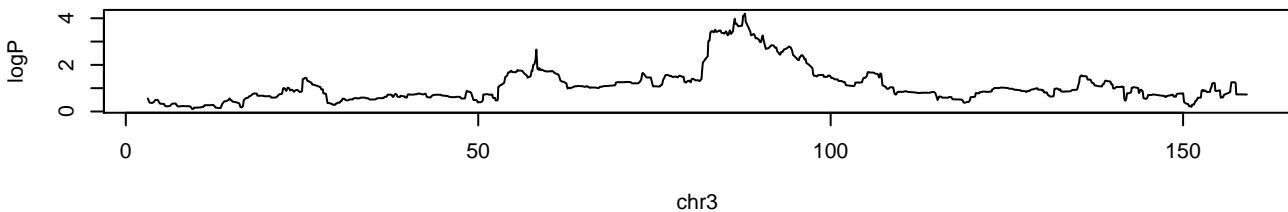
./Im.PCV.weights.norm.500.08102014//APC.Colon.1.Im.gscan.RData chr19 37294115 4.50071986759477 0.0



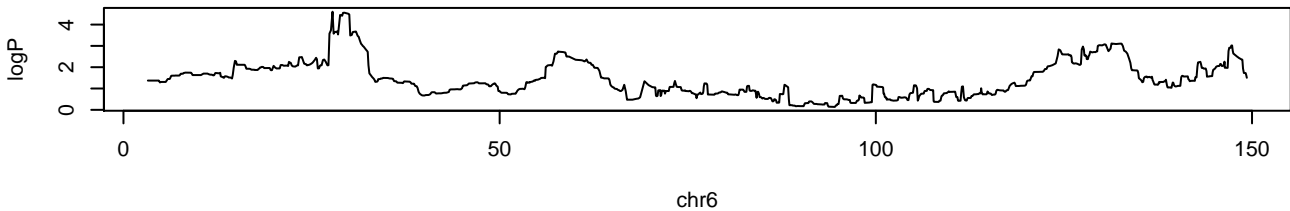
./Im.PCV.weights.norm.500.08102014//APC.Colon.2.3.Im.gscan.RData chr1 14649969 4.2152511692518 0.0



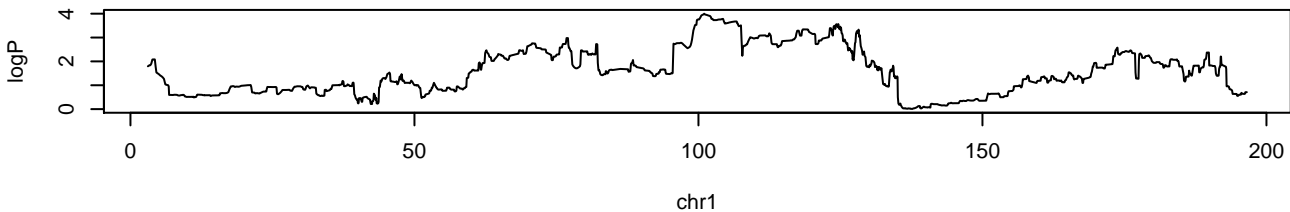
./Im.PCV.weights.norm.500.08102014//APC.Colon.2.3.Im.gscan.RData chr3 87802124 4.19488274166868 0.0



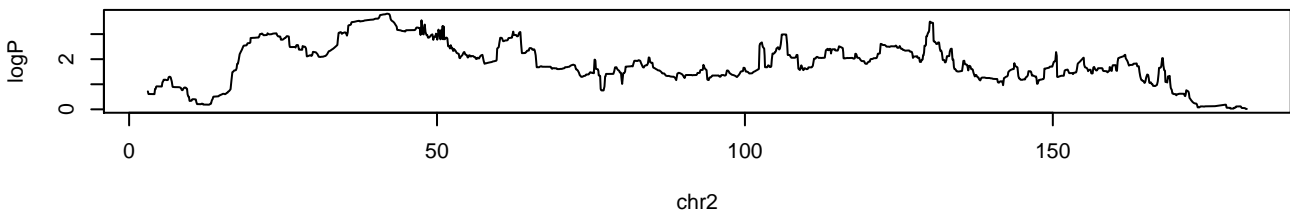
./lm.PCV.weights.norm.500.08102014//APC.Colon.2.3.lm.gscan.RData chr6 27728224 4.60360305410605 0.0



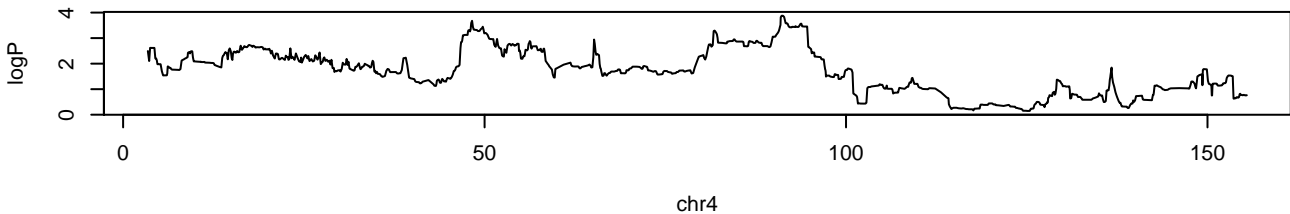
./lm.PCV.weights.norm.500.08102014//APC.Colon.3.lm.gscan.RData chr1 100929709 3.99830374914913 0.0



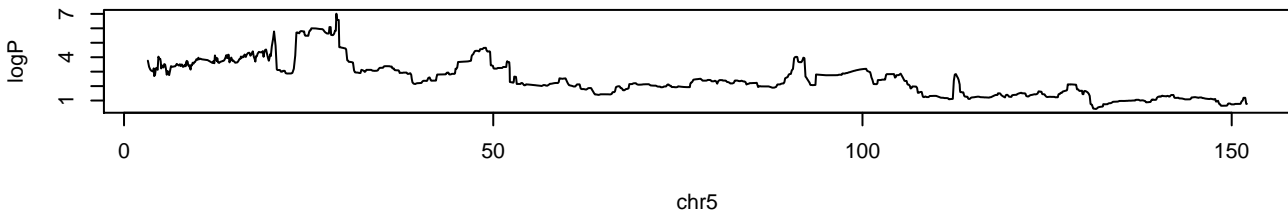
./lm.PCV.weights.norm.500.08102014//APC.Colon.3.lm.gscan.RData chr2 41825549 3.8123478632841 0.08



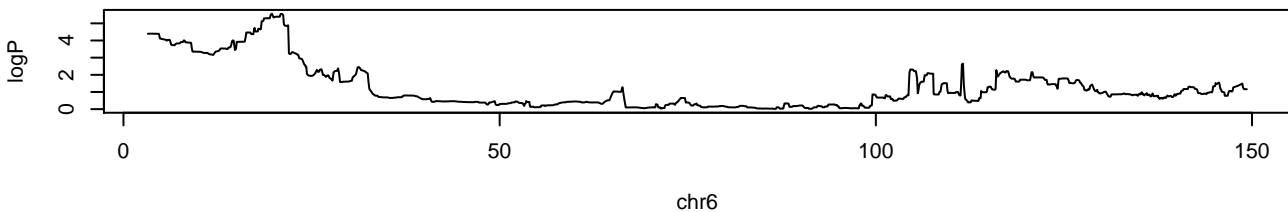
./lm.PCV.weights.norm.500.08102014//APC.Colon.3.lm.gscan.RData chr4 91069069 3.87755842667931 0.0



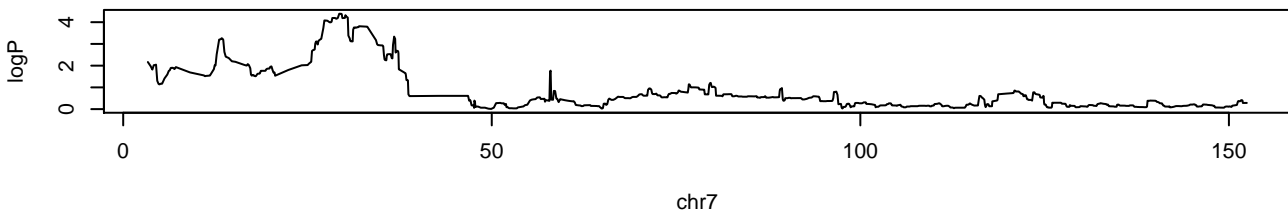
./Im.PCV.weights.norm.500.08102014//APC.Colon.3.Im.gscan.RData chr5 28710628 7.01165861472489 0



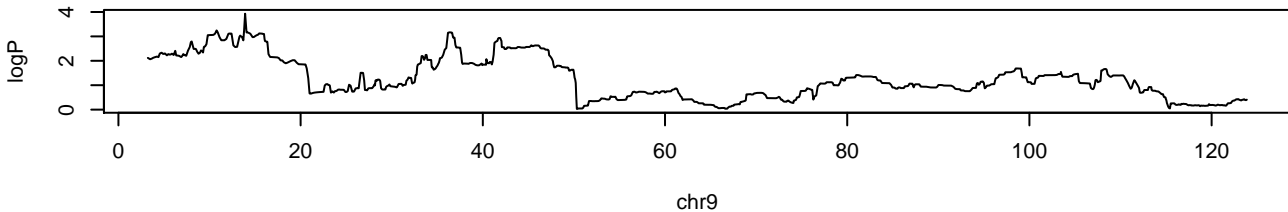
./Im.PCV.weights.norm.500.08102014//APC.Colon.3.Im.gscan.RData chr6 19663665 5.56157919200776 0.0



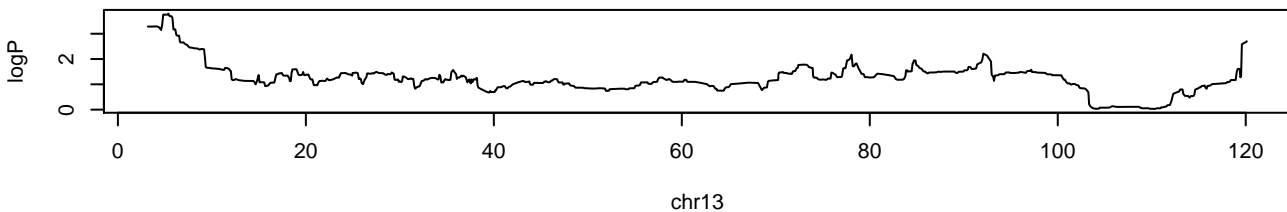
./Im.PCV.weights.norm.500.08102014//APC.Colon.3.Im.gscan.RData chr7 29250577 4.38930758596952 0.0



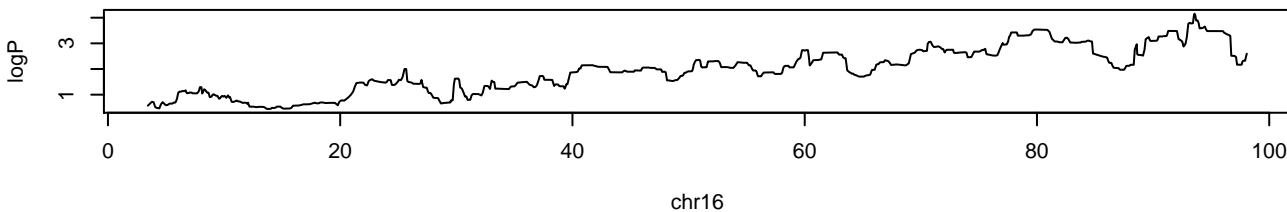
./Im.PCV.weights.norm.500.08102014//APC.Colon.3.Im.gscan.RData chr9 13834311 3.92908580983314 0.0



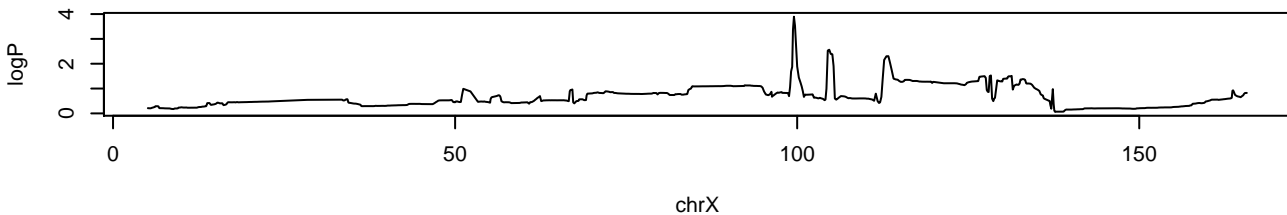
./Im.PCV.weights.norm.500.08102014//APC.Colon.3.lm.gscan.RData chr13 5337523 3.7912778222617 0.0



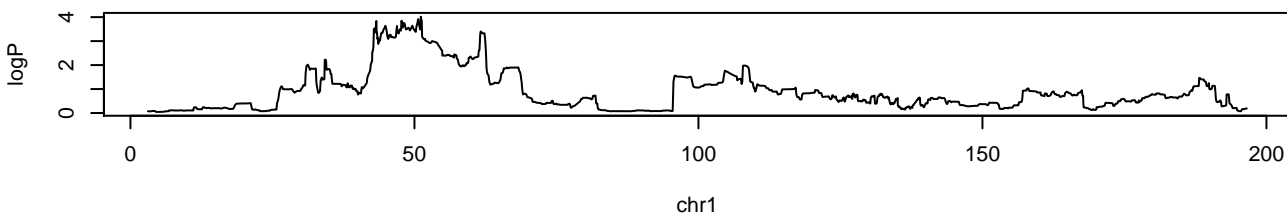
./Im.PCV.weights.norm.500.08102014//APC.Colon.3.lm.gscan.RData chr16 93539285 4.15588237463295 0.0



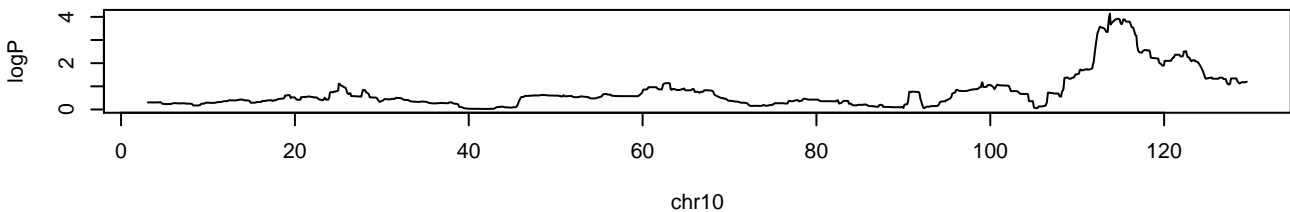
./Im.PCV.weights.norm.500.08102014//APC.Colon.3.lm.gscan.RData chrX 99445013 3.89306293747845 0.0



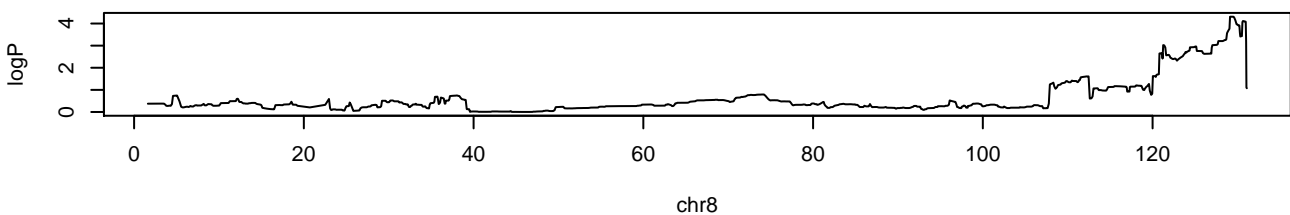
./Im.PCV.weights.norm.500.08102014//APC.Colon.total.lm.gscan.RData chr1 51101096 4.01716161469078 0.0



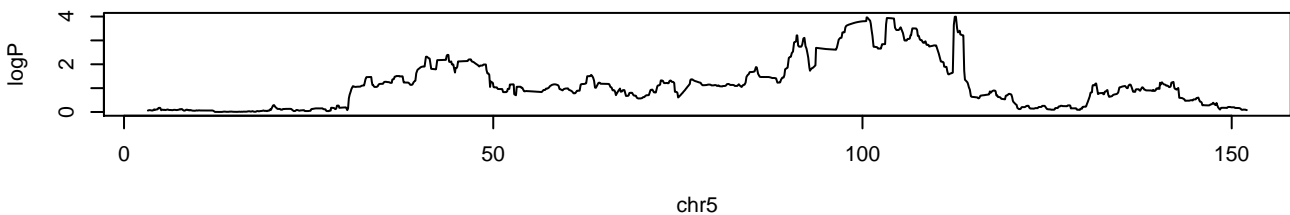
/Im.PCV.weights.norm.500.08102014//APC.Colon.total.lm.gscan.RData chr10 113711100 4.13698139079471 0.0



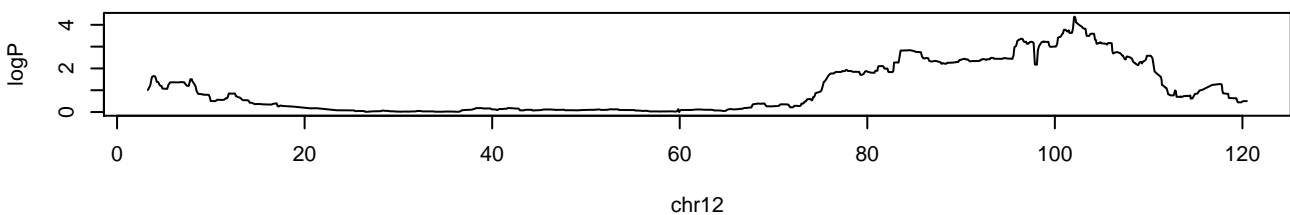
/Im.PCV.weights.norm.500.08102014//APC.SB1.1.2.lm.gscan.RData chr8 129185983 4.30803310341754 0.0



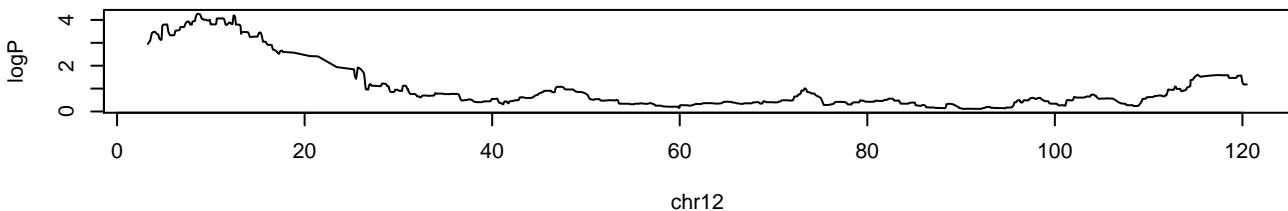
/Im.PCV.weights.norm.500.08102014//APC.SB1.2.3.lm.gscan.RData chr5 112566020 3.99321912568719 0.0



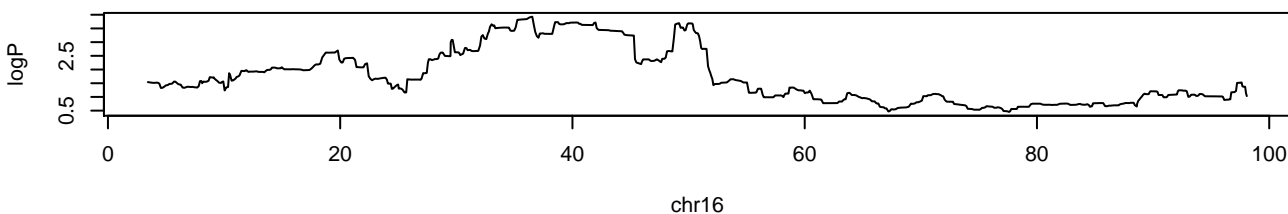
/Im.PCV.weights.norm.500.08102014//APC.SB1.2.3.lm.gscan.RData chr12 102090550 4.37175018899606 0.0



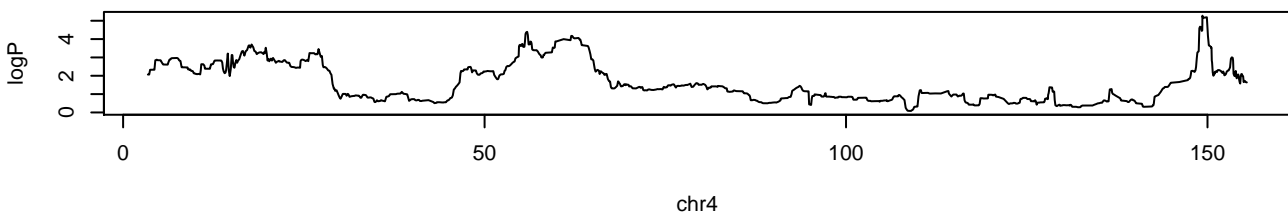
./lm.PCV.weights.norm.500.08102014//APC.SB1.3.lm.gscan.RData chr12 8499469 4.27124041574054 0.0



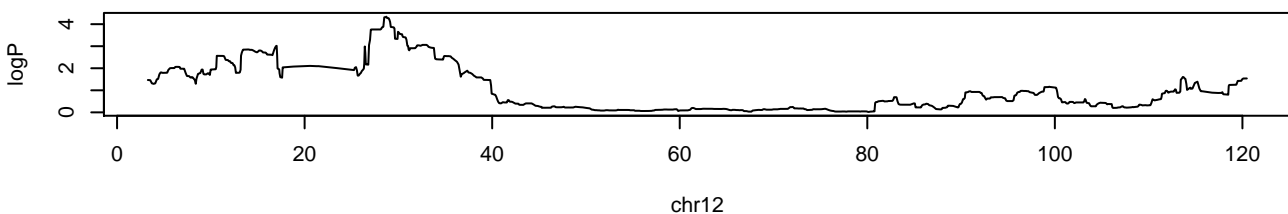
./lm.PCV.weights.norm.500.08102014//APC.SB1.total.lm.gscan.RData chr16 36481756 3.92779895923103 0.



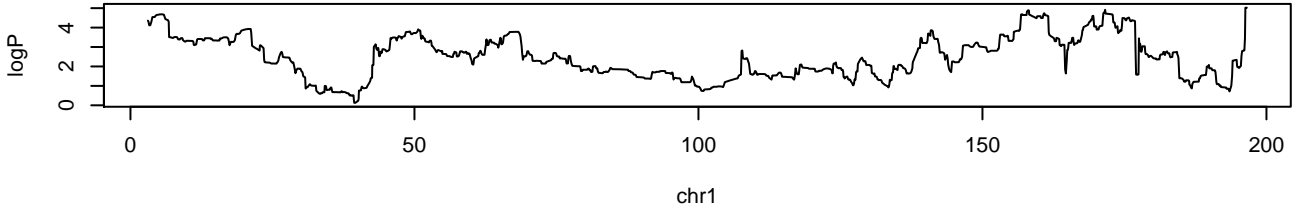
./lm.PCV.weights.norm.500.08102014//APC.SB2.1.2.lm.gscan.RData chr4 149304652 5.27370666206217 0



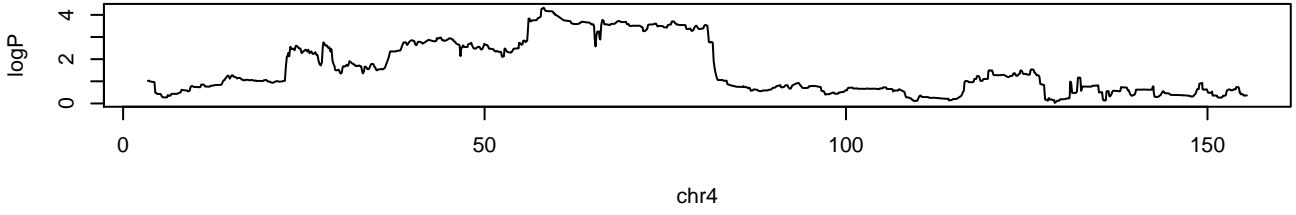
./lm.PCV.weights.norm.500.08102014//APC.SB2.1.lm.gscan.RData chr12 28679303 4.3376627807344 0.0



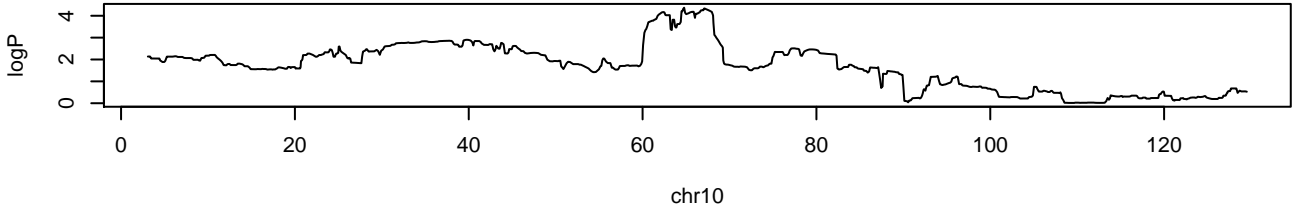
./Im.PCV.weights.norm.500.08102014//APC.SB2.2.3.Im.gscan.RData chr1 196484881 5.02259822979126 0.0



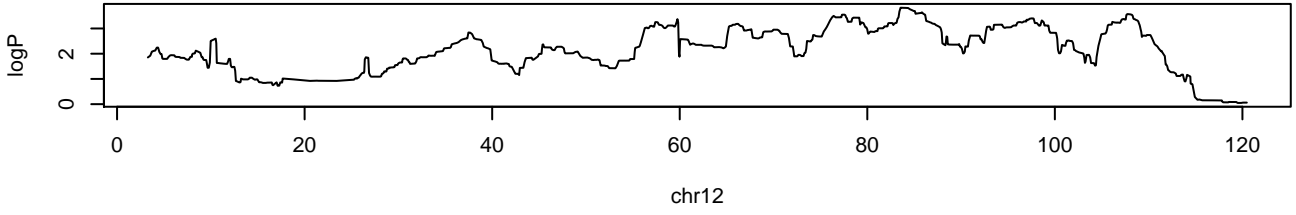
./Im.PCV.weights.norm.500.08102014//APC.SB2.2.3.Im.gscan.RData chr4 58120705 4.32294526409806 0.0



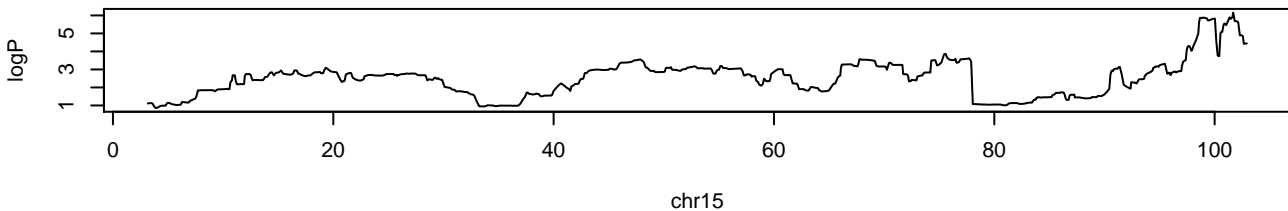
./Im.PCV.weights.norm.500.08102014//APC.SB2.2.3.Im.gscan.RData chr10 64721813 4.36793000072209 0.0



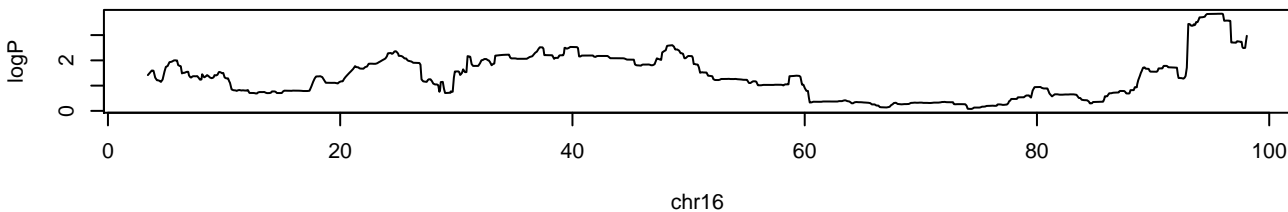
./Im.PCV.weights.norm.500.08102014//APC.SB2.2.3.Im.gscan.RData chr12 83467637 3.82344526936927 0.0



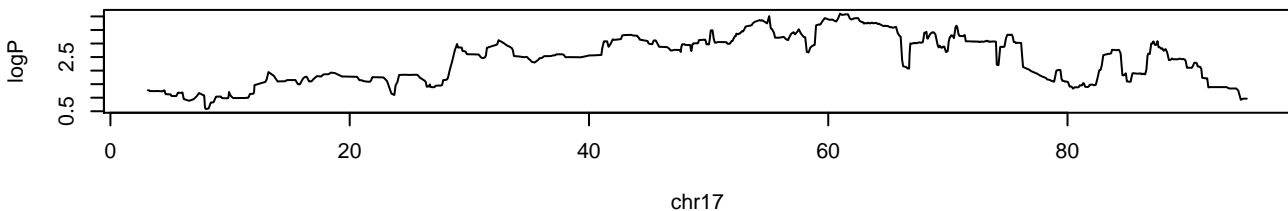
./lm.PCV.weights.norm.500.08102014//APC.SB2.2.3.lm.gscan.RData chr15 101656218 6.15023890477186



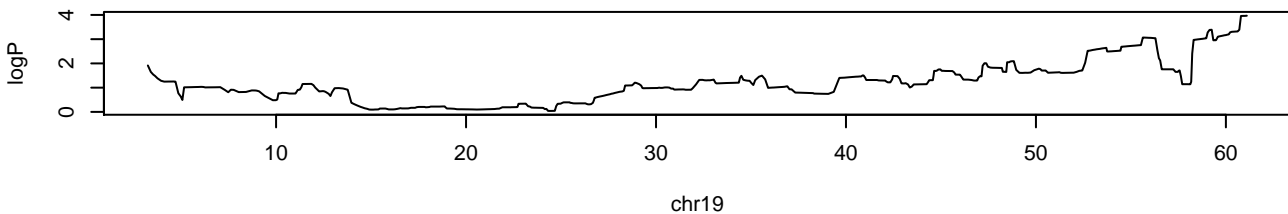
./lm.PCV.weights.norm.500.08102014//APC.SB2.2.3.lm.gscan.RData chr16 95905711 3.84656167188961 0.0



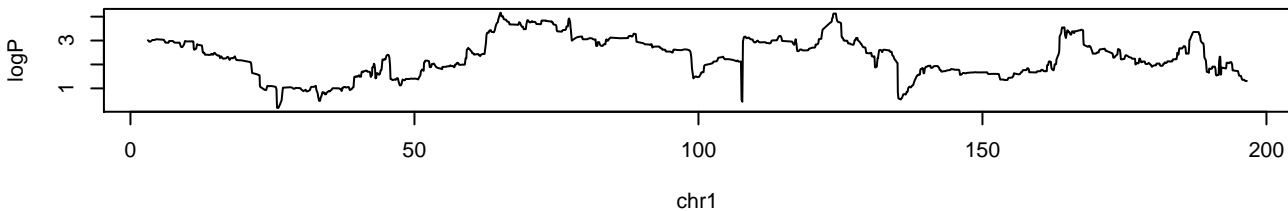
./lm.PCV.weights.norm.500.08102014//APC.SB2.2.3.lm.gscan.RData chr17 60903439 4.09955616270838 0.0



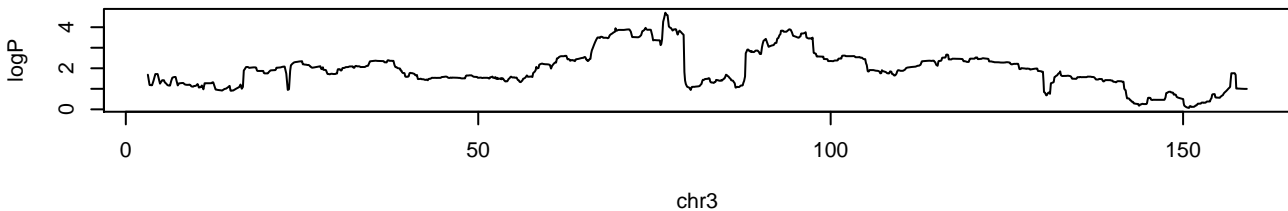
./lm.PCV.weights.norm.500.08102014//APC.SB2.2.3.lm.gscan.RData chr19 61077203 3.96791148134444 0.0



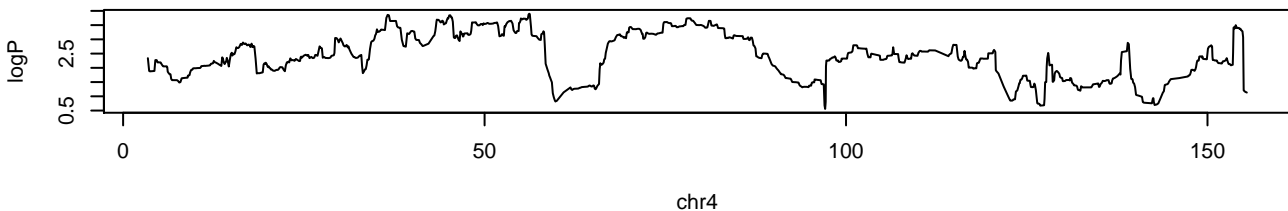
./lm.PCV.weights.norm.500.08102014//APC.SB2.3.lm.gscan.RData chr1 65060495 4.16431389656301 0.04



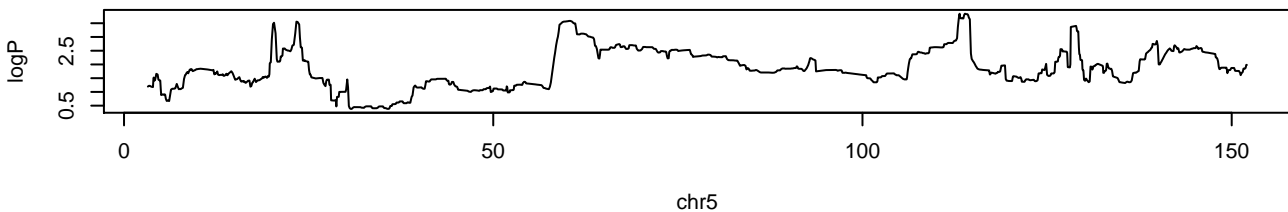
./lm.PCV.weights.norm.500.08102014//APC.SB2.3.lm.gscan.RData chr3 76449623 4.70561255009389 0.01



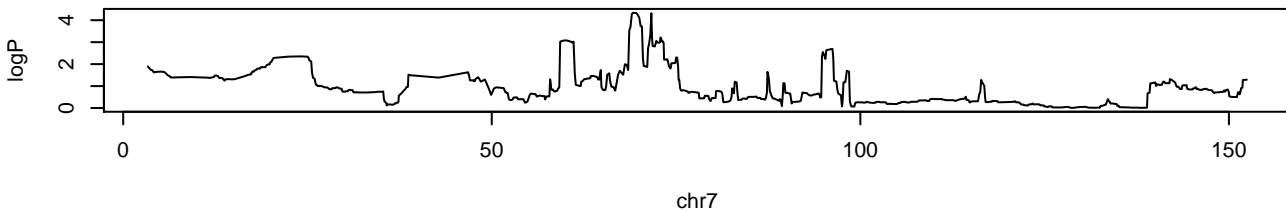
./lm.PCV.weights.norm.500.08102014//APC.SB2.3.lm.gscan.RData chr4 56140844 3.89997473758212 0.08



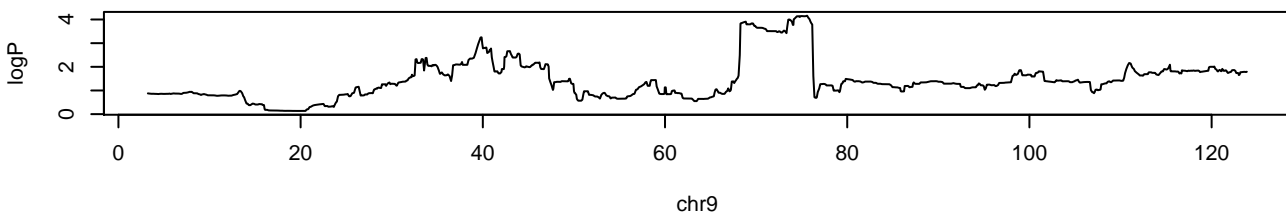
./lm.PCV.weights.norm.500.08102014//APC.SB2.3.lm.gscan.RData chr5 113830724 3.84607219134065 0.09



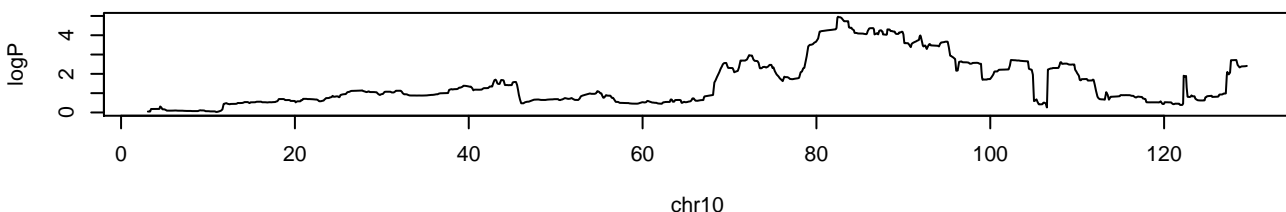
./lm.PCV.weights.norm.500.08102014//APC.SB2.3.lm.gscan.RData chr7 69097802 4.34087617629879 0.03



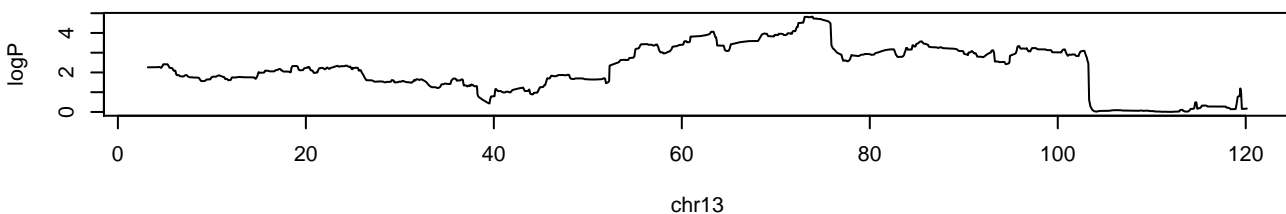
./lm.PCV.weights.norm.500.08102014//APC.SB2.3.lm.gscan.RData chr9 75547006 4.15998931952274 0.04



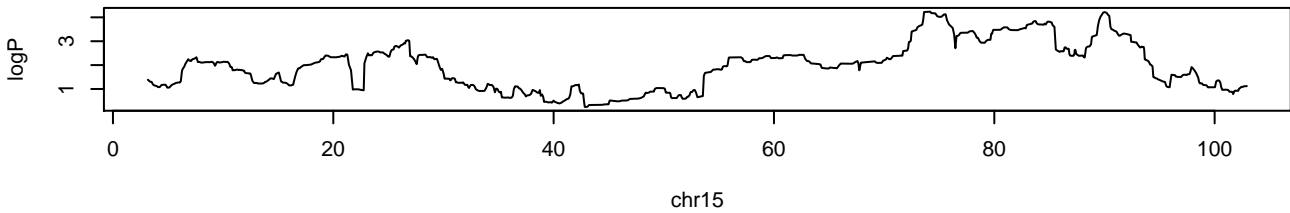
./lm.PCV.weights.norm.500.08102014//APC.SB2.3.lm.gscan.RData chr10 82460141 4.96007138721973 0.0



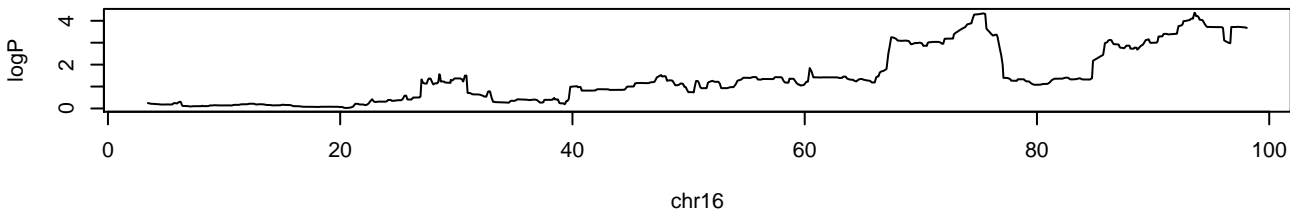
./lm.PCV.weights.norm.500.08102014//APC.SB2.3.lm.gscan.RData chr13 73912036 4.82182643654184 0.0



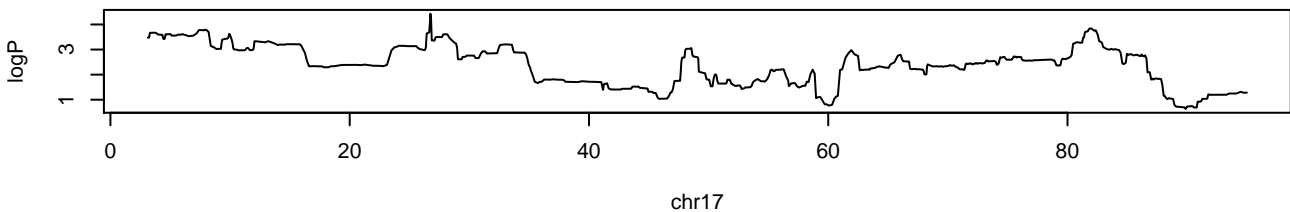
./Im.PCV.weights.norm.500.08102014//APC.SB2.3.Im.gscan.RData chr15 74160654 4.23561353422789 0.0



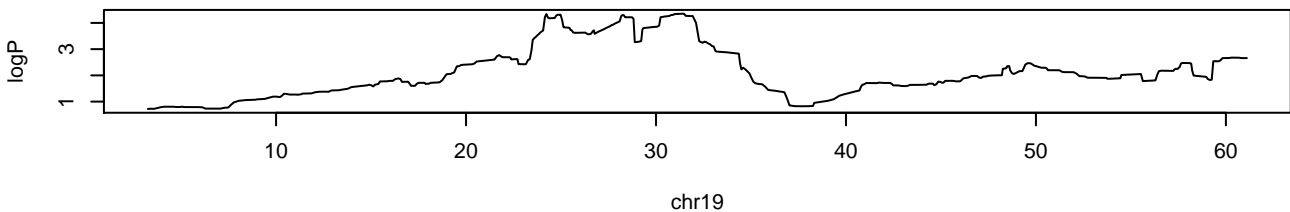
./Im.PCV.weights.norm.500.08102014//APC.SB2.3.Im.gscan.RData chr16 93539285 4.36824493434654 0.0



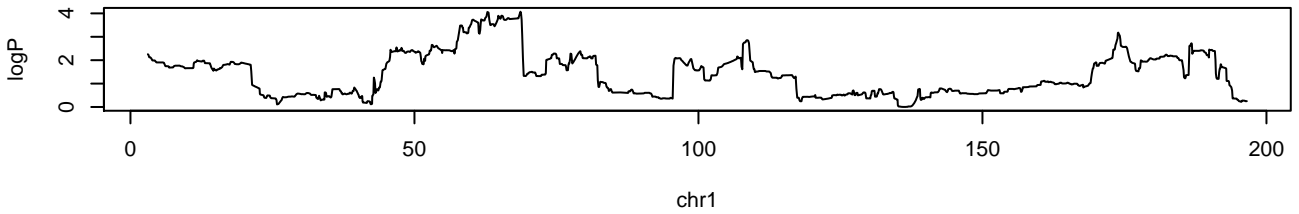
./Im.PCV.weights.norm.500.08102014//APC.SB2.3.Im.gscan.RData chr17 26721426 4.42961797519935 0.0



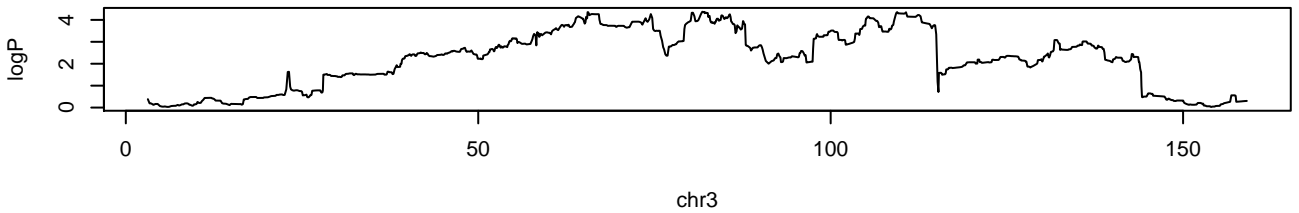
./Im.PCV.weights.norm.500.08102014//APC.SB2.3.Im.gscan.RData chr19 31354267 4.35023293380954 0.0



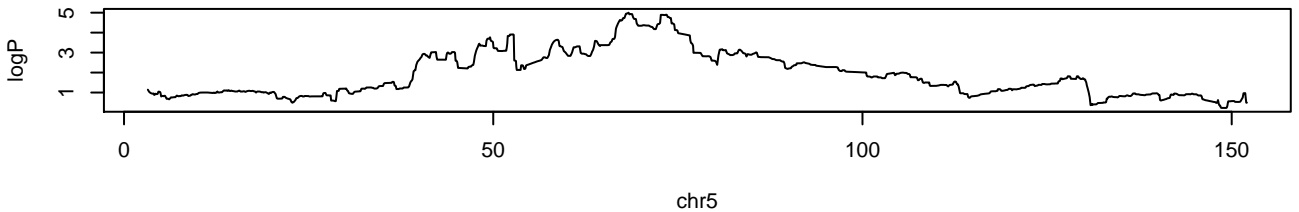
/Im.PCV.weights.norm.500.08102014//APC.SB3.1.2.Im.gscan.RData chr1 68638494 4.07128161977728 0.0



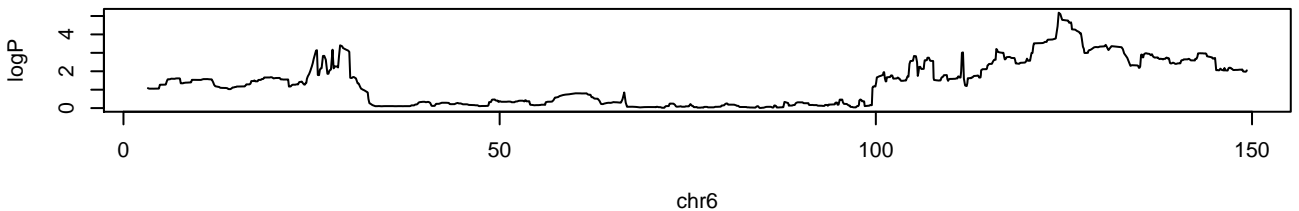
/Im.PCV.weights.norm.500.08102014//APC.SB3.1.2.Im.gscan.RData chr3 81749631 4.37253630480043 0.0



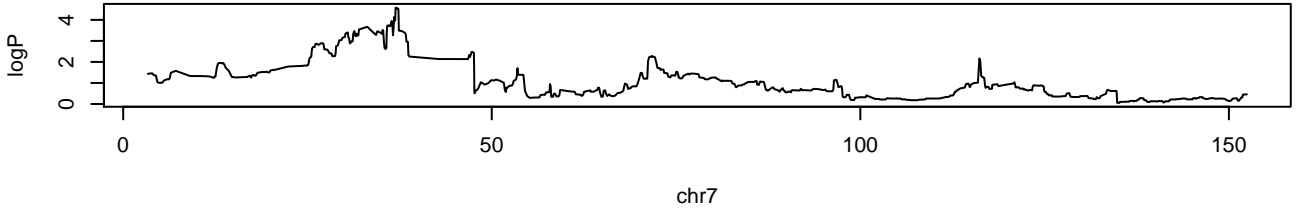
/Im.PCV.weights.norm.500.08102014//APC.SB3.1.2.Im.gscan.RData chr5 68289356 4.99751887275521 0.0



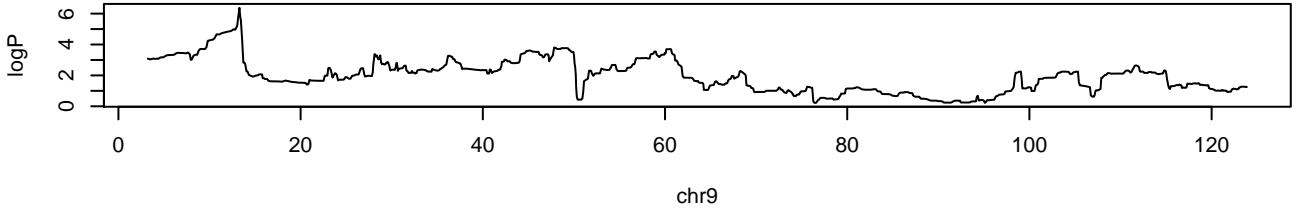
/Im.PCV.weights.norm.500.08102014//APC.SB3.1.2.Im.gscan.RData chr6 124226223 5.17811628531152 0.0



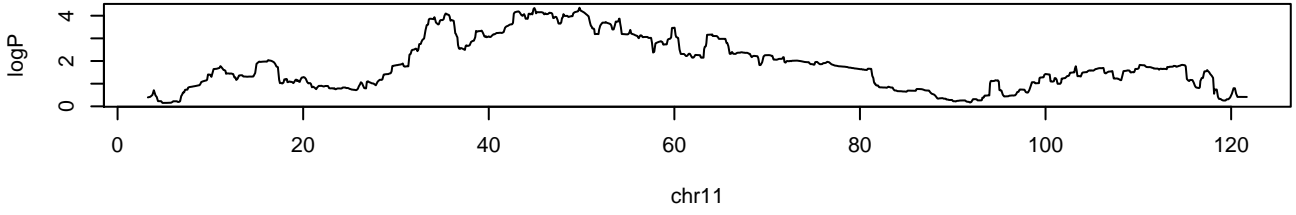
./lm.PCV.weights.norm.500.08102014//APC.SB3.1.2.lm.gscan.RData chr7 36916825 4.5779587087766 0.0



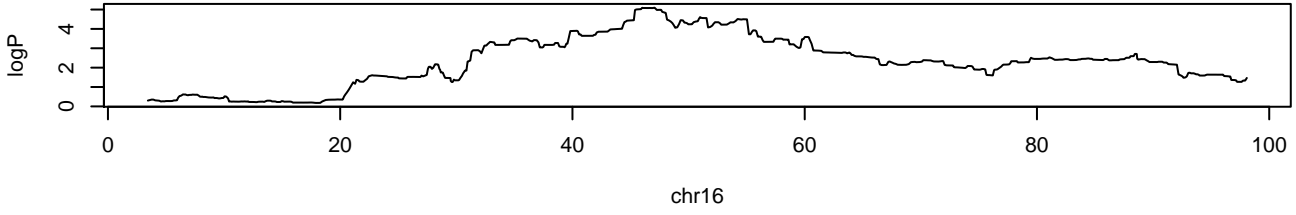
./lm.PCV.weights.norm.500.08102014//APC.SB3.1.2.lm.gscan.RData chr9 13229563 6.38238183909884 0



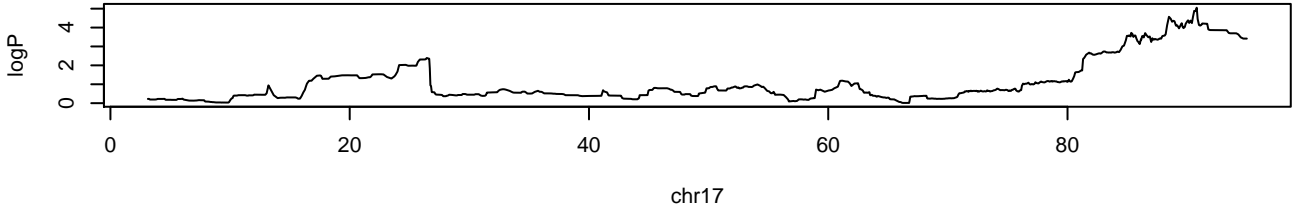
./lm.PCV.weights.norm.500.08102014//APC.SB3.1.2.lm.gscan.RData chr11 49752661 4.35254296863191 0.0



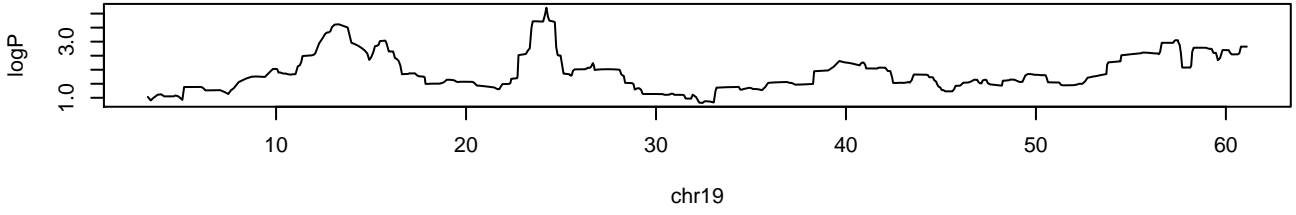
./lm.PCV.weights.norm.500.08102014//APC.SB3.1.2.lm.gscan.RData chr16 46974518 5.0938003914801 0.0



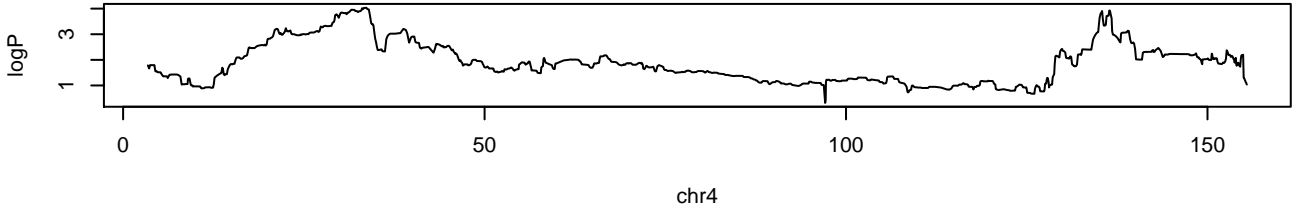
./Im.PCV.weights.norm.500.08102014//APC.SB3.1.2.lm.gscan.RData chr17 90777602 5.05001249912621 0.0



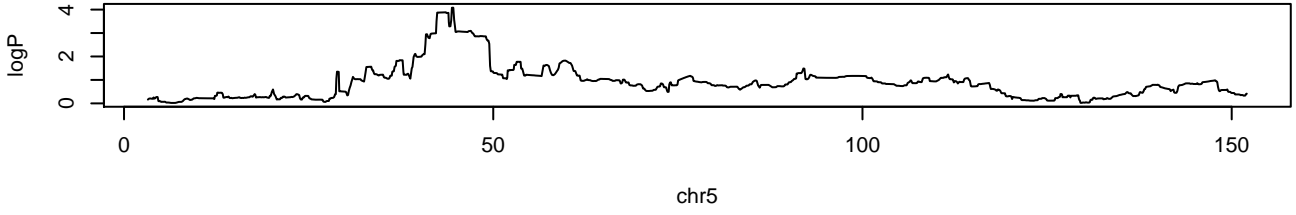
./Im.PCV.weights.norm.500.08102014//APC.SB3.1.2.lm.gscan.RData chr19 24190877 4.20977325003936 0.0



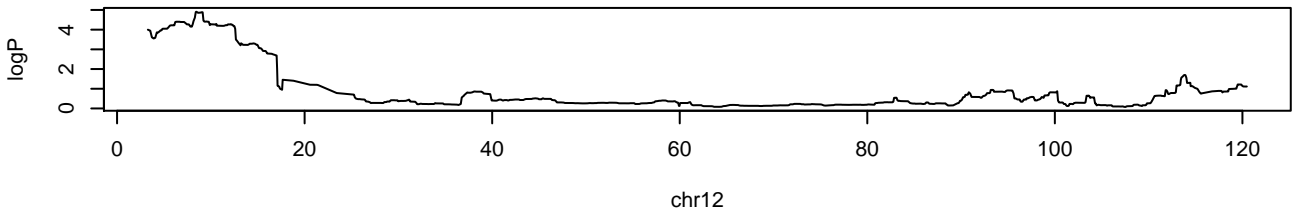
./Im.PCV.weights.norm.500.08102014//APC.SB3.2.3.lm.gscan.RData chr4 33507274 4.03451343641896 0.0



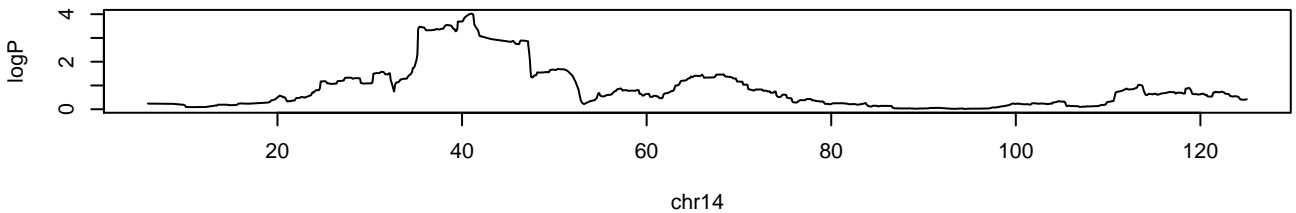
./Im.PCV.weights.norm.500.08102014//APC.SB3.2.3.lm.gscan.RData chr5 44371448 4.08014788818154 0.0



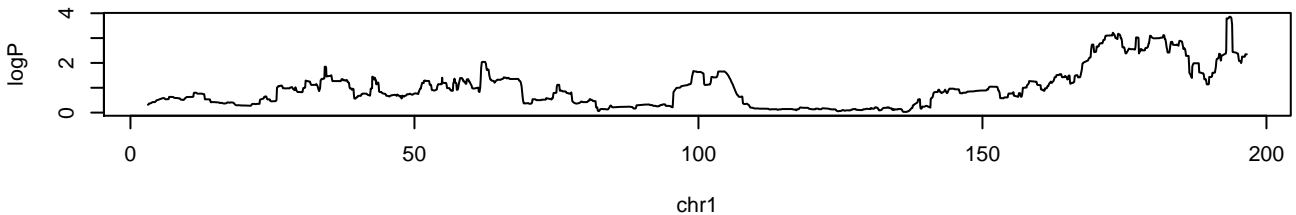
./Im.PCV.weights.norm.500.08102014//APC.SB3.2.3.Im.gscan.RData chr12 8432194 4.91032041699907 0.0



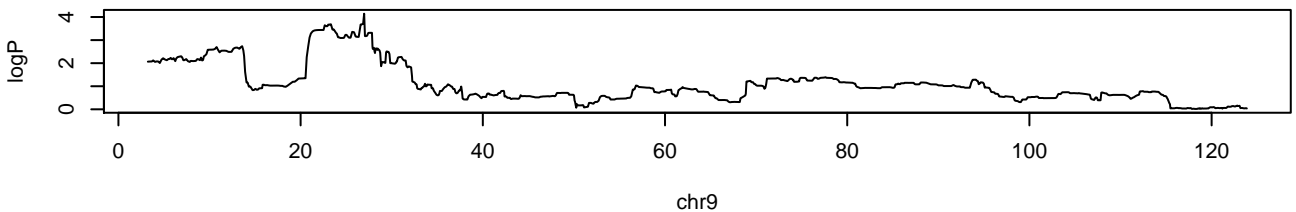
./Im.PCV.weights.norm.500.08102014//APC.SB3.3.Im.gscan.RData chr14 41010568 4.01973238288987 0.0



./Im.PCV.weights.norm.500.08102014//APC.Total.Im.gscan.RData chr1 193518524 3.8600824480258 0.07



./Im.PCV.weights.norm.500.08102014//APC.Total.Im.gscan.RData chr9 26923187 4.14335379681795 0.03



./lm.PCV.weights.norm.500.08102014//APC.Total.lm.gscan.RData chr18 55001425 3.90309542942174 0.06

