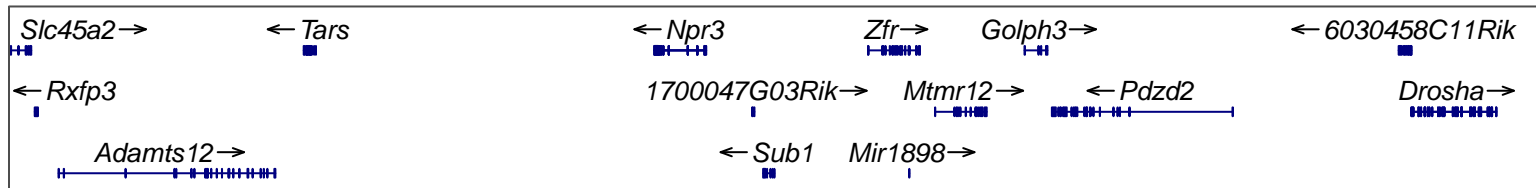
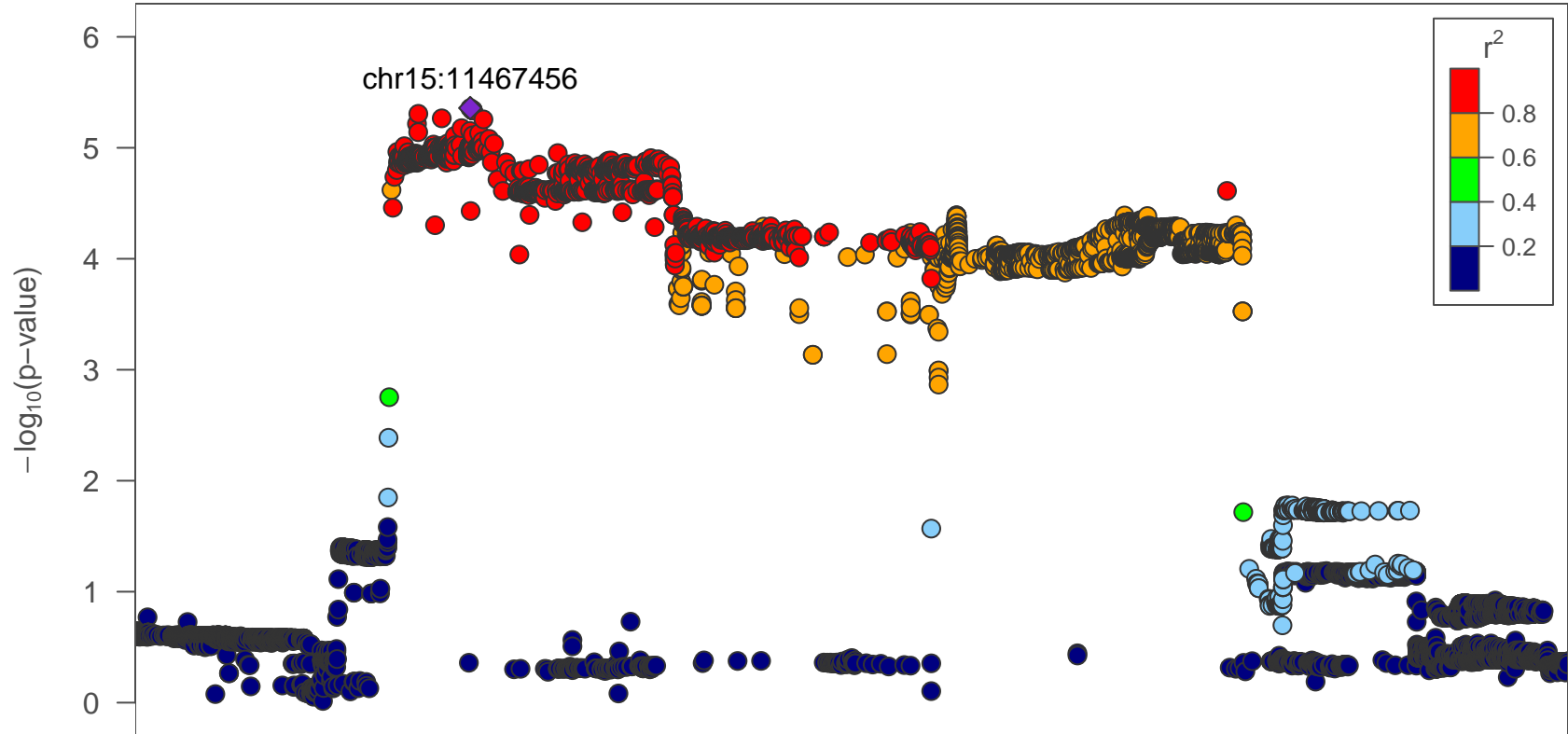


BMC.Perim.chr15:11467456



11.5

12

12.5

Position on chr15 (Mb)

date: Fri Dec 4 13:46:35 2015

build: hg18

display range: chr15:11000271–12998577 [11000271–12998577]

hilite range: 0 – 0 [0 – 0]

reference SNP: chr15:11467456

number of SNPs plotted: 7547

min p_value: 4.38E–6 [chr15:11467456]

max p_value: 9.65E–1 [chr15:11262094]